

School Places Plan 2009

Approved by the Executive Lead Member
for Children's Services - 22 July 2009

Contents

Introduction	3
A Policies guiding decisions on school organisation	4
A1 Diversity of provision	7
A2 Provision of post-16 education	10
A3 School size	11
A4 Location of new schools	12
A5 Accessibility of schools	13
A6 Building Schools for the Future	14
B Changes since previous Plan	16
C Conclusions	18
C1 Pupil number forecasts and school capacities	18
C2 Summary of planning area issues:	
Basingstoke and Deane area	28
East Hampshire area	32
Eastleigh area	34
Fareham area	38
Gosport area	40
Hart area	42

	Havant area	44
	New Forest area	46
	Rushmoor area	48
	Test Valley area	50
	Winchester area	52
C3	Special Educational Needs	55

Tables

1	Numbers on Roll and School Capacities – January 2009	58
2	Numbers on Roll in Special Schools – January 2009	78
3	Numbers on Roll in Resourced Provision for children with special educational needs – January 2009	79
4	Pupils in sixth forms in Hampshire mainstream schools – January 2009	81
5	Long term pupil number trends	82
6	Numbers on roll in County Council Maintained Nursery Schools and Units – January 2009	84
7	Pupils attending Education Centres – January 2009	85

Introduction

The County Council has a statutory duty to plan the provision of school places and to secure an appropriate balance locally between supply and demand. The need for school places changes in response to population movements and birth rate variations. In many areas of the county the child population is declining; in other areas new housing developments are creating a need for additional school accommodation. Population changes mean that schools may go through periods when there is pressure on places and others when there is a surplus.

This School Places Plan has been prepared as a planning tool to respond to new developments and to respond to the need to review surplus places and supplements the County Council's Children and Young People's Plan (CYPP).

The draft plan, updated with 2008 data, was published for consultation in May 2009. Following consideration of comments received, the plan was approved by the Executive Lead member for Children's Services on 22 July 2009.

Any queries concerning this plan should be addressed to:

Ian Lawson
School Organisation Officer
Children's Services Department
Hampshire County Council
The Castle
WINCHESTER
Hampshire
SO23 8UG

(e-mail: ian.lawson@hants.gov.uk)

Section A

Policies guiding decisions on school organisation

Introduction

The process of planning school places aims to achieve a balance between the number of places available and the pupils for whom they are required. In its strategic planning role, the County Council must respond to changes in demand over time by increasing or removing capacity. This can be achieved in a number of ways, including:

- building new schools
- extending existing schools
- reducing places at existing schools, for example by removing temporary buildings or changing the use of spaces
- amalgamating or closing schools.

Many of these changes take time to achieve, bearing in mind the need to consult school governors, staff and parents, to secure approvals, obtain capital resources and to plan, design and carry out building work. A significant time factor has, therefore, to be built into the forward planning process.

Details of the County-wide demographic context are given in section C1.

The County Council believes it is very important to monitor surplus places effectively and to review those areas where there are large surpluses, usually taken to be greater than 10%, which is recognised as the limit of a reasonable working margin by the Audit Commission. Surplus places are costly to retain and the overall level is taken into account in the DCSF's rules for allocating credit approvals for the provision of new school places, with high levels of surplus leading to reductions in the amount of capital funding available.

External assessment of the County Council's performance uses the percentage of surplus places as a measure of performance and value for money. In terms of the percentage of schools with more than 25% surplus, Hampshire compares favourably with its statistical neighbours and the national average. This is evident from the following data¹, relating to 2007:

Sector	Hampshire	Statistical neighbours	National average
Primary	12.0%	13.0%	14.0%
Secondary	8.0%	11.5%	10.0%

¹ Taken from Ofsted APA toolkit 2008,
[http://www.ofsted.gov.uk/oxcare_providers/la_download/\(id\)/4934/\(as\)/APA_T OOLKIT/apatk_2008_850.pdf](http://www.ofsted.gov.uk/oxcare_providers/la_download/(id)/4934/(as)/APA_T OOLKIT/apatk_2008_850.pdf)

The County Council's corporate aims are taken fully into account in all aspects of the planning of school places, including reorganisations, which may involve the possible amalgamation and/or closure of schools. The corporate aims are:

- Hampshire safer and more secure for all
- Maximising wellbeing
- Enhancing our quality of place

The implementation of proposals set out in this Plan is also evaluated in the light of the five Aims of the Children Act, which are:

- be healthy
- stay safe
- enjoy and achieve through learning
- make a positive contribution to society
- achieve economic well-being

Table 1 (page 58) shows the capacity and current number on roll for all Hampshire primary and secondary schools. Capacity has been measured using the methodology set out in DCSF circulars. This methodology, known as "Net Capacity", takes account of all useable spaces in a school, both teaching and non-teaching, and aims to present a fair assessment of the actual space available and ensure that there is sufficient space available for ancillary accommodation such as staff rooms and storage.

The remainder of Section A of the Plan summarises policies which are relevant to school organisation and the planning of school places.

This School Places Plan supplements the Hampshire Children and Young People's Plan (CYPP), which acts as an "umbrella" for a number of plans affecting children's services, including provision for children with learning difficulties and disabilities, and the development of Extended Schools and Children's Centres. The CYPP 2009 – 2012 is published on the County Council's web-site at <http://www3.hants.gov.uk/cypp.htm>

The CYPP identifies the following six priorities for all those working with children and young people in Hampshire:

1. Reducing the incidence and impact of poverty on the achievement and life chances of children and young people.
2. Securing children and young people's physical, spiritual, social, emotional and mental health, promoting healthy lifestyles and reducing inequalities.
3. Providing opportunities to learn that raise children and young people's aspirations, encourage excellence and enable them to enjoy and achieve beyond their expectations.
4. Ensuring that children and young people are safe and feel safe, enabling them to build resilience and personal confidence.

5. Providing vocational, leisure and recreational activities that provide opportunities for children and young people to experience success and make a positive contribution.

6. Removing barriers to access, participation and achievement and not tolerating discrimination and abuse.

Other issues affecting school place planning are contained in the following documents:

The County Council's strategy for secondary schools under the Building Schools for the Future programme, at <http://www.hants.gov.uk/education/bsf>

The County Council's approach to implementing the "Primary Capital Programme" agreed in June 2008, which can be found at <http://www.hants.gov.uk/decisions/decisions-docs/080522-excsed-R0812113238.html>

Early Education and Childcare in the Childcare Sufficiency Assessment, at <http://www3.hants.gov.uk/childrens-services/childcare/childcare-sufficiencyassessment.htm>

Policies for admission to schools, at <http://www.hants.gov.uk/education/parents/admission/>

A1 Diversity of provision

The overall breakdown of school provision in Hampshire, at January 2009, is as follows:

- 429 primary schools provide education from age four to age 11 (124 are infant, 110 are junior, 195 are all age primary)
- 71 secondary schools provide education from age 11 to age 16, 7 of which also cater for the 16 to 19 age group (see A2)
- 26 special schools and 56 units in other schools provide education for children with special needs (see tables 2 and 3 for details)
- 8 pupil referral units
- most post-16 education is provided in sixth form or further education colleges
- there are 3 nursery schools maintained by the County Council.

This pattern of provision is based on the principles that underpin agreed practice in Hampshire schools as stated in the “*Education Policy Statement*” approved by the Executive Lead Member for Children’s Services (Education) on 11 October 2007². This expresses a commitment to providing children and young people with equal access to excellent learning opportunities regardless of where in the county they live. The results achieved in Hampshire’s schools are amongst the very best in the country and in comparison with the county’s statistical neighbours.

Local communities are diverse. Schools serve local communities and are therefore themselves diverse in nature. The notion of local management is well established in Hampshire and this also contributes to diversity in the way schools operate and develop.

Serving the local community effectively, while providing high quality education, is an important element of a school’s role. Where the needs of a community are best met by some specialisation in its schools, the County Council would support it.

To this end, the County Council has adopted a policy of pro-active support for the government’s initiative to establish Specialist Schools. In order for good practice to be developed and shared, the County Council will give strong support to bids for specialist school status from schools seeking to work in clusters or consortia and who wish to develop networks for the exchange of information. In addition to Sport, Technology, Arts, Languages, Humanities, Science, Business and Enterprise, Mathematics and Computing, Engineering, Music and Performing Arts, high performing specialist schools have the opportunity to offer a second Specialism when invited to do so by the Specialist Schools and Academies Trust (SSAT). This second specialism may be an additional subject, as listed, but alternative opportunities exist such as becoming a Training School or specialising in strategies for raising attainment. Such high performing schools may also select a vocational second specialism in line with the new diplomas currently being developed and the SSAT advises schools to discuss potential options with their School Improvement Partner (SIP).

² This document can be found at <http://www.hants.gov.uk/decisions/decisions-docs/071011-excscd-R1004140644.html>

Under the provisions of the Education and Inspections Act 2006, most proposals for new schools will require a “competition” whereby other providers are invited to bid to become involved in the establishment and future governance of the school. The County Council has decided that, where one or more satisfactory bids are received, it will not normally enter its own proposals into the competition. However, in those cases where the County Council does enter, or where the Secretary of State agrees that a competition is not necessary, proposals would be for a community school, so that the governing body could decide which status is appropriate.

The rolls of all schools are kept under review as part of the County Council’s role in ensuring that there are sufficient school places in appropriate locations. A number of schools have been extended in recent years in response to rising demand for places. The established practice is to support sustainable expansion; this will continue to be the case. Decisions on expansion take account of factors including the availability of resources for new buildings, the infrastructure of the school (halls, specialist facilities and services such as gas and electricity supply capacity), the size of the site and transport implications. The quality of education and its sustainability are key considerations. Other important strategic factors are the availability of places locally and the development plans of each local school, set in the context of the likely pattern of future demand, in the general context of falling rolls, modified where appropriate through plans for known housing developments and migration.

As school rolls in general are still falling, policies of further expansion will need to be very carefully considered, unless the places are provided specifically to serve new communities. Otherwise, there is a clear risk that further surplus places will be created. In a programme of area reviews of provision, the popularity of each school is a factor taken into account in deciding on future plans. It is the County Council's policy to work closely with schools to raise standards continuously in all schools.

With the exception of three special schools for boys with emotional and behavioural difficulties, there are no single sex schools in Hampshire, and no proposals to establish such provision in mainstream schools.

It is the County Council’s policy to maintain the existing proportion of places in church schools, in partnership with the dioceses.

In appropriate cases, the County Council will consider proposals from diocesan bodies to establish new voluntary aided schools or to expand existing schools. Consultation will take place with the relevant diocesan bodies in areas where new primary or secondary schools are envisaged, to establish whether provision of church schools might be appropriate.

In some areas of the county, provision for Roman Catholic secondary education is made at schools in neighbouring authorities.

Consistent with its role as commissioner, rather than supplier, of school places, the County Council will support the case for the establishment of an academy where the following questions, supported by research evidence, can be answered positively:

- Will the proposal raise standards rather than just maintain them?
- Will the proposal improve the well-being of all children and young people in the community served?

- Will the proposal improve community cohesion and collaboration without any loss of existing quality?
- Will the proposal improve the school's potential to meet the objectives of the CYPP?
- Will the proposal improve the potential to meet the objectives of the 14-19 strategy?

The County Council will expect similar questions to be answered positively where a governing body proposes to change the school's category (such as from community to foundation), to acquire a trust, or to enter a federation with another school.

The table below gives a breakdown of the numbers of schools in Hampshire by category as at January 2009.

Category	No of schools		
	Primary	Secondary	Total
Community	292	51	343
Foundation	8	17	25 ³
Voluntary aided	54	2	56
Voluntary controlled	75	1	76
Total Mainstream	429	71	500
Special	16 ⁴	10	26
Total of all schools	445	81	526

³ Proposals have been approved for a further 3 secondary schools to change category from community to foundation during 2009.

⁴ This figure includes 7 all-age special schools catering for ages 2-19

A2 Provision of post-16 education

In Hampshire, Post-16 education is provided mainly in sixth form colleges and colleges of further education funded by the Learning and Skills Council. There is currently sixth-form, or other post-16, provision in 7 of Hampshire's 71 secondary schools, but increasing to 8 when the post-16 skills centre is established at Hamble Community Sports College (due to open in September 2010) and in 7 special schools.

Under current policies, it is for the governing bodies of individual schools to propose establishing new sixth forms and the County Council will assess support for such proposals based on the specific conditions appertaining to each individual case. Statutory guidance from the DCSF indicates that there should be a strong presumption in favour of the approval of proposals for a new post-16 provision where:

- the school is a high performing specialist school that has opted for an applied learning specialism; or
- the school, whether specialist or not, meets the DCSF criteria for 'high performing' and does not require capital support.

Schools which currently have sixth forms will continue to be supported by the County Council for as long as they remain viable and there is a continuing demand for places.

From 1st April 2010 the planning and funding responsibility for post-16 provision will revert to the local authority (the strategic planning for post-16 provision in Hampshire became the responsibility of the Learning and Skills Council(LSC) for Hampshire and the Isle of Wight in April 2001). In the meantime, Hampshire County Council continues to work closely with the LSC to ensure that post-16 provision in Hampshire responds to the changing national agenda and meets local need.

The County Council, in partnership with the local LSC and our sub-regional partners, Portsmouth, Southampton and the Isle of Wight, is reviewing the provision of 14-19 opportunities in the county through a range of local responses. Hampshire will need to increase still further its success in achieving high rates of participation in education and training at 16-19 as we move towards the raising of the participation age. In particular, the County Council is working pro-actively with the LSC to support developments leading to greater 14-19 coherence in nine consortia of schools, colleges and work-based learning providers within Hampshire.

A3 School size

Although the County Council may wish to define optimum sizes for schools, it is inevitable that there will be many schools outside this range which nevertheless achieve excellent results. A number of factors generate judgements about optimum size, such as achieving a pupil population of a size which facilitates cost-effective timetabling and the efficient deployment of resources. Achieving the optimum size of school is also affected by the availability of capital funding, particularly credit approvals from central government.

Where additional places are required to cater for growth in the school population, it will often be necessary to plan outside the optimum range, particularly in an area where numbers are not large enough for two schools and a larger school could meet needs effectively.

When planning the provision of additional accommodation at a school, account will also be taken of the suitability of existing accommodation to deliver curricular needs in the light of the Asset Management Plan for the school. The County Council's policy is not to provide additional spaces in temporary classrooms, except in situations where the need is for a defined period, such as to cater for peaks in individual age groups.

Primary schools

The County Council's policies on optimum school size are as follows:

- primary schools should, wherever possible, fall within the range from 1 Form Entry (1FE – 210 places) to 3FE (630)
- infant schools should, wherever possible, fall within the range 2FE (180) to 5FE (450)
- junior schools should, wherever possible, fall within the range 2FE (240) and 5FE (600)
- primary schools should not normally have fewer than 60 pupils.

Secondary schools

The optimum size for an 11-16 secondary school is considered to be between 900 and 1,200 students, although there are many successful schools outside this range. On educational grounds, proposals to expand an existing school beyond 1,600 students will need to be carefully considered against the potential for the provision of an additional school. It is unlikely to be appropriate to consider solutions which lead to the provision of a new school which does not have the potential to cater for at least 900 students.

Special schools

Special schools should be of sufficient size to provide a wide range of experience and expertise amongst the teaching staff, not only to provide appropriate opportunities to meet the needs of all pupils, but to work in partnership with the wider community of schools and support services, including acting as resource and outreach centres for their respective geographic areas. The optimum size will depend on the age range of pupils and the types of special educational needs for which the school caters.

A4 Location of new schools

It is the County Council's policy that new primary schools should be provided within new developments that are large enough to support their own provision. These should be within reasonable walking distance of the homes of all pupils within the area to be served by the school, with safe (preferably segregated) routes for journeys on foot or bicycle and related to public transport. In the context of new schools, a reasonable walking distance would be a journey of no longer than 20 minutes each way. This is equivalent to a distance of 800 metres. Wherever possible, schools should be located in proximity to local shops and other community facilities, to provide a focus for new development. Sufficient land should be available within the site to meet the full requirement for playing fields.

Similar principles (with the exception of walking distance) apply to the location of secondary schools, where a more peripheral site may be acceptable so that the school's playing field forms a buffer between urban and countryside areas.

In sympathy with the principles of "sustainable development", the impact of new development should be addressed by the development itself. This means that where additional schools, or school places, are required as a consequence of development, as far as possible the cost should fall on the landowners and/or developers, by way of contributions falling within the concept of "planning obligations". Any new school sites required should be provided, free of charge, by developers and a financial contribution to be made towards the cost of the additional school accommodation. Such contributions are sought, through the local planning authority's development control process. Following the adoption of a revised developer contributions policy paper in June 2007 (updated in July 2008⁵), the County Council expects contributions to be made from all developments which will create a shortfall in capacity (at primary and/or secondary schools) or where there are significant suitability issues which restrict the ability of existing schools to absorb additional pupils.

It is accepted by the Audit Commission⁶ that not all unfilled places in a school are surplus places, but that some margin of capacity is necessary to allow parents to exercise a preference, given that there will be volatility in preferences from one year to the next, and to allow for differences in the size of individual cohorts. Whilst no specific margin is suggested by the Audit Commission, the County Council's position is that a school should be considered as full when it has less than 5% of its places unfilled.

In order to encourage parents to use modes of transport other than their private car for the journey to school, a Travel Plan will be prepared by all new schools. Existing schools will be encouraged to prepare and implement their own Plan with the assistance of the School Travel Planning Team to achieve the same objective.

⁵ This can be found at <http://www3.hants.gov.uk/education/schools/school-places.htm>

⁶ Trading Places: 2002 Update, The Audit Commission, 2002

A5 Accessibility of schools

The County Council is committed to increasing the accessibility of schools to pupils with a disability, including wheelchair users and pupils with sensory impairment. A programme of adaptations, funded largely through the DCSF's Schools Access Initiative, has been in existence for several years and is continuing. The projects proposed each year will take the strategy forward to increase the accessibility, in its broadest sense, of mainstream schools, including facilities to meet both the sensory and physical needs of pupils. The Learning and Skills Council also provides funding to help make school facilities used by adult learners compliant with disabilities legislation.

In response to the Special Educational Needs and Disability Act 2001, the County Council has consulted a wide range of interested parties on its Accessibility Strategy for 2009-2012. This was approved by the Executive Lead Member for Children's Services (Education) on 18 December 2008.

The strategy covers the three areas required by the planning duties in the Disability Discrimination Act:

- Increasing the extent to which disabled pupils can participate in the curriculum
- Improving the physical environment of schools to increase the extent to which disabled pupils can take advantage of education and associated services
- Improving the delivery to disabled pupils of information which is provided in writing for pupils who are not disabled.

The full strategy is published at

<http://www.hants.gov.uk/decisions/decisions-docs/081218-excsed-R1211092219.html>

A6 Building Schools for the Future

Building Schools for the Future (BSF) is a national initiative intended to rebuild, remodel or refurbish all secondary schools in England, including secondary age special schools and education centres, originally over a 15 year period from 2005. This renewal programme must take place within the context of a locally developed agenda to transform secondary education to meet the demands of the present century. The required approach can, therefore, be summarised as Building Schools for the Future, not School Buildings for the Future.

The Department for Children, Schools and Families (DCSF) has set in place a detailed framework within which BSF operates. Delivery is managed through Partnerships for Schools (PfS), which has been set up by the DCSF to oversee the initiative nationally and to work with individual local authorities once they are included in the programme. To secure BSF funding local authorities (LAs) are required to:

- provide local leadership for BSF;
- develop and implement an education and community vision with partners through a Strategy for Change;
- agree transformation strategies with schools and other partners;
- support individual schools in developing their own Strategies for Change, complementing that prepared by the LA ;
- undertake long-term planning of school places across their areas in which current numbers, locations and groupings of schools will not be taken for granted;
- procure and deliver design and building work.

Hampshire County Council could attract investment through BSF totalling up to £1.2bn, probably over a period of about ten years. The scale of this investment is unparalleled and the work required to ensure that this is successful is far-reaching, ranging across many disciplines and involving a large number of stakeholders. It is a one-off opportunity for the County Council and schools to make a radical impact on ensuring that secondary education in Hampshire better meets the needs of all learners in a more cohesive way and to modernise provision for the next generation. Local authorities are expected to contribute financially to at least 10% of the overall programme costs through maximisation of investment opportunities, e.g. by reinvesting capital receipts.

A key component of qualifying for BSF investment is the need to demonstrate:

- a commitment to the Government's choice and diversity agenda; and
- a capacity to manage surplus places effectively, particularly where this involves the achievement of significant reductions in unfilled capacity across an area.

In its booklet "An introduction to building schools for the future" (2008), the DCSF states that "Ministers expect local authorities to use BSF to deliver a step-change in

attainment levels by increasing school diversity and enhancing parental choice in their areas". The DCSF wishes to see an imaginative, forward-looking approach, which is designed to meet the future needs of learners and the wider community, rather than maintaining the status quo based on the pattern of existing provision. Where appropriate, the rationalisation of school places should be linked to new provision which could add to the range of available school types, e.g. through the establishment of a Trust school or an Academy.

The County Council is currently undertaking a large amount of preparatory work in order to be ready to enter the programme. As part of this programme it has been required to prioritise areas of the county for investment, using criteria of social deprivation and educational attainment. The first two phases of BSF will be in Havant and Gosport. The County Council is currently awaiting a decision on its Readiness to Deliver submission which sought programme entry for Phase 1 in the second half of 2009.

The framework for Building Schools for the Future

Education vision

In planning and implementing BSF, the County Council will actively promote existing partnerships, and seek to develop new partnerships, between schools, colleges and all those supporting their work to ensure that they are at the heart of their educational provision. Planned provision will serve children currently in primary schools and in many cases schools are likely to be led by headteachers not yet appointed.

Funding

The planned delivery model established by central government envisages funding split more or less equally between capital grant for refurbishment work and Private Finance Initiative (PFI) for most full new builds. There is a presumption that authorities will set up Local Education Partnerships (LEPs) with the private sector to achieve effective procurement and project delivery. The County Council is developing a complementary approach to BSF procurement which could lead to more rapid and cost effective delivery of the programme.

BSF funds are allocated on the basis of future pupil numbers, i.e. not school places, and are based on 10 year projections agreed with the local authority. A floor area formula is also used. It is important to note, therefore, that proposals for the future pattern of school provision and size must be closely related to forecast demand, as the funding formula allows for only a small working margin of surplus places.

A parallel, but much smaller, funding stream is available through the Primary Capital Programme (PCP) to support major investment in primary schools and primary age special schools. Some £22m is available to the County Council 2009/10 and 2010/11 for investment through the PCP initially in the Havant and Gosport areas. Planning for BSF will take into account the opportunities offered by PCP.

Up-to-date information about the BSF programme can be found at www.hants.gov.uk/education/bsf.

Section B

Changes since previous Plan

Since the School Places Plan 2008 was adopted, the following statutory proposals have been approved. Details are also given below of progress on other issues that may give rise to statutory proposals.

1. Proposals approved by the County Council

- a. Closure of resourced provision for children with hearing impairment at Woodcot Primary School, Gosport, with effect from 31 August 2009.
- b. Enlargement of St Bede's Catholic Primary, Basingstoke, with effect from 1 September 2009 (published by the governing body) – conditional on the grant of planning permission.
- c. Establishment of resourced provision for children with Autistic Spectrum Disorder at Crofton School, with effect from 1 September 2010.
- d. Closure of Oak Farm Community School, with effect from 31 August 2011
- e. Closure of Yateley Infant and St. Peter's Junior Schools, and the establishment of a new voluntary controlled primary school on the Yateley Infant site, with effect from 1 September 2010 (published on 27 March 2009).

2. Proposals decided by the Adjudicator

None

3. Proposals where public notices have been published but not yet determined

- a. Establishment of a special school for children with Behavioural, Emotional and Social Difficulties in the premises of Grangeside PRU, Basingstoke, with effect from 1 September 2010 (second notice published on 23 April 2009).
- b. Closure of Staunton Community Sports College to enable the establishment of an academy in its premises.

4. Cases where consultation has been approved

- a. Amalgamation of Barncroft Infant and Junior Schools, Havant

5. Changes in school category, from community to foundation, approved by governing bodies

- a. Perins School, New Alresford, with effect from 30 January 2009 (trust school).
- b. Brune Park Community College, Gosport, with effect from 1 September 2009
- c. Hounslow School, Totton, with effect from 3 September 2009 (trust school)

6. Acquisition of a trust by an existing foundation school

- a. Purbrook Park School, Havant, with effect from 1 April 2009.

Section C - Conclusions

C1 Pupil number forecasts and school capacities

Introduction

This section of the School Places Plan is in four parts:

- County-wide trends
- Surplus places
- Individual planning areas
- Special educational needs

These are explained in more detail below.

County-wide trends

In recent years the Hampshire County Structure Plan has provided the framework for the provision of new housing over a 10 to 15 year period, and its distribution between district council areas and major development areas. The distribution of new housing is particularly important in planning school places given that new housing developments yield significant numbers of children of school age, although there can be wide variations between individual development sites.

The Planning and Compulsory Purchase Act 2004 transferred the responsibility for strategic planning from county councils to regional assemblies. The Structure Plan policies have been superseded by the Regional Spatial Strategy for the South East of England (known as the South East Plan). Which was published in May 2009. The South East Plan sets out the long term spatial framework for the region over the years 2006-2026 and includes policies for the scale and distribution of new housing.

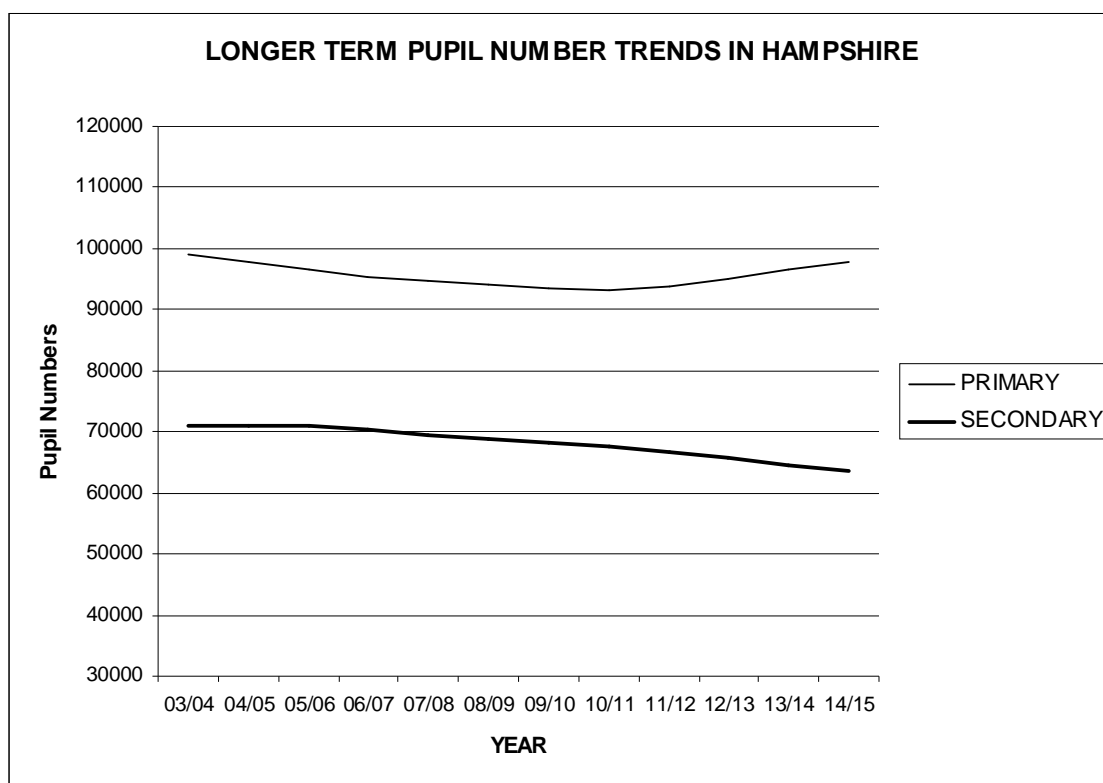
The South East Plan's annual average net additional dwelling requirement for Hampshire authorities is set out below:

Basingstoke and Deane	945
East Hampshire	260
East Hampshire (Whitehill/Bordon)	275
Eastleigh	354
Fareham	186
Fareham SDA	500
Gosport	125

Hart	220
Havant	315
New Forest District	196
New Forest National Park	11
North East / North of Hedge End SDA	300
Rushmoor	310
Test Valley	501
Winchester	612
TOTAL	5,110

Some of these new dwellings will be required to cater for families needing more space, releasing existing dwellings which may then be occupied by smaller households which may not contain children of school age. As a consequence, movement within the county does not necessarily increase the net number of children, but may shift the demand. Nevertheless, part of the justification for the target for new dwellings is that Hampshire should take a share of the demand for the South East Region of England. This implies some migration into the County, which would increase the numbers of children for whom school places will be required.

Table 5 shows the county-wide population projections for the period of this School Places Plan, and beyond, together with figures for the past five years. These are illustrated by the following graph:



Primary school numbers reached a peak of 104,572 in the 1998/99 school year; there has been a small year-on-year decrease thereafter. Current numbers are 93,970, with the forecast of a continuing decrease to 93,217 in 2010/11, a decline of 0.8% from current levels (11% below the 1998/99 peak). In line with the upturn in the number of 4 year olds, which commenced in the 2007/08, the overall forecast of primary school numbers shows a steady increase from 2011/12 onwards. Secondary school numbers reached a peak of 71,034 in 2003/04, remained at that level for 2004/05 and 2005/06 but now show a year on year decline. This is expected to reverse once the growth in primary numbers works through in 2018 and beyond.

The Structure Plan made provision for several Major Development Areas (MDAs) to help meet the needs which could not be met by redevelopment and change within existing urban areas. Local Plans have identified where this and other housing development is to take place. Planning permission has been granted at Andover MDA (East Anton and Picket Twenty) and West of Waterlooville MDA. The reserve MDA at North Winchester is proposed for housing in Winchester City Council's Core Strategy Preferred Option document but it is unlikely that development will take place before 2011/12. Housing development is also underway or proposed on several large sites to the north of Basingstoke and proposals have been brought forward for a major development of about 4,700 houses on military land in Aldershot, now known as Aldershot Urban Extension.

As there is only limited scope to cater for the initial stages of development at existing schools, it is anticipated that each MDA will require between one and three new primary schools.

Based on the Local Plan requirements and scope for further growth, it is anticipated that the following new primary schools will be required to cater for MDAs and other large housing developments over the next 10 years:

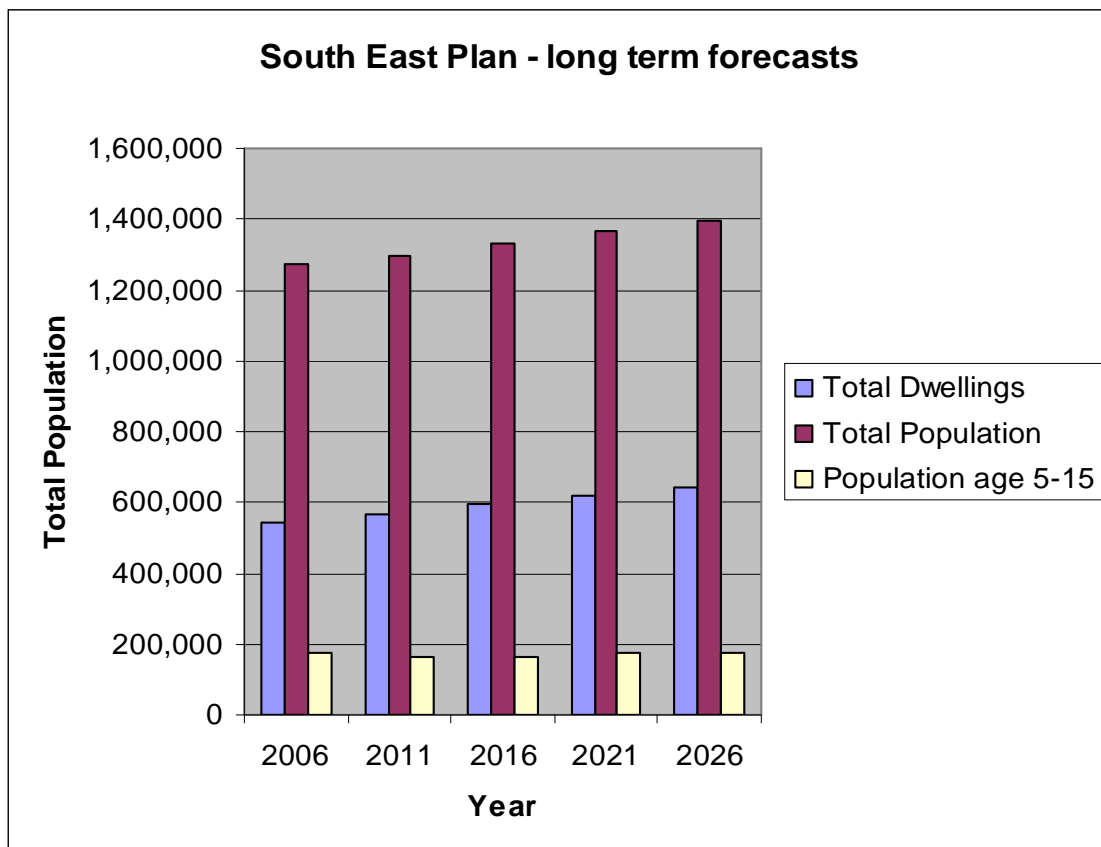
Aldershot Urban Extension	Two primary schools
Andover MDA (East Anton)	Two primary schools
Andover MDA (Picket Twenty)	One primary school
Basingstoke	One or two primary schools
West of Waterlooville MDA	Two primary schools
Winchester North MDA	One primary school

Other large developments, and the cumulative impact of several small developments in some areas, may require additional places at existing primary schools.

It will also be necessary to address the need for secondary school places associated with the MDAs and other major developments in the county. None is large enough, in its own right, to justify a new secondary school, but account will need to be taken of the availability (or shortage) of places in schools in the surrounding areas and the scope for the MDAs to grow beyond their present targets after 2011.

The South East Plan proposes 5,110 new homes per year in Hampshire. County level figures, and even those at district level, will mask the need for additional school places in some areas of housing growth, which will be needed to achieve the aim that primary schools should be located within close proximity to pupils' homes. The corollary of this is that increasing numbers of children in areas of growth will be at the expense of a decline in the pupil population in existing residential areas

Long term population projections indicate that numbers of children of school age will rise, but at a slower rate than the overall rise in population. This trend is illustrated on the following graph, which shows the actual and projected numbers of dwellings, total population and population aged 5 – 15 through the period 2001 to 2026. These long term projections are based on the South East Plan and would change if the housing requirement was increased in the future.



The draft South East Plan includes a number of “Strategic Development Areas” on sites North of Fareham, North/North East of Hedge End and at Whitehill / Bordon. It also designates South Hampshire and Basingstoke as regional growth points. Other large development proposals will come forward in Local Development Frameworks where needed to meet the plan’s housing targets. Strategies for school provision (primary and secondary) will be formulated as details emerge.

Surplus places

In the introduction to Section A it is explained that 10% is considered to be the limit of a reasonable level of surplus capacity. This allows for fluctuations in age groups and provides a margin to cater for future development. Taking the aggregate of the individual planning areas set out in the following section, there was an overall surplus at primary schools of 10% in January 2009 reducing to 7% by January 2014. At secondary schools the surplus was 10% in January 2009. This is expected to rise to 14% by January 2014.

These overall figures for surplus places, and those for individual planning areas, take account of schools with numbers on roll in excess of net capacity. If those schools were disregarded, the above percentages in many cases would be higher.

Individual planning areas

A significant factor in determining the need for school places is the demand arising from new housing development. The planning areas set out in the following section are based on the areas covered by district councils, taking the secondary schools located within each district and their linked primary schools, even though some of these linked schools are situated in a different district council area. This is illustrated on the maps in the following section, where the bold line shows the district council boundary.

Unshaded areas are those where primary schools are in another planning area for the purposes of this Plan.

To provide a more localised focus, in most cases the planning areas have been divided into smaller geographical groupings. For each of these smaller areas, details are given of the comparison between the numbers of pupils, school capacity available and the percentage of surplus places, both in January 2009 and the forecast situation in January 2014. Comments are given where either there may be a need for additional accommodation, or where there is a surplus of more than 10%. The maps on pages 22 and 23 illustrate the areas of the county where there is such an overall surplus in capacity.

It is also appropriate to consider the situation at individual schools with more than 25% surplus capacity, as this is highlighted in the County Council's Annual Performance Assessment (referred to in the Introduction to this Plan).

It has, for several years, been the County Council's practice to seek to reduce surplus capacity, either by way of area reviews or by working with individual schools to redesignate accommodation to reflect its use for purposes other than class teaching (for example the conversion of surplus classrooms as libraries, music/drama rooms, ICT suites, staffrooms or early years / community facilities). In this way reductions in nominal capacity can be of direct benefit to the schools and their communities.,

Capital funding to implement area reviews usually relies on the availability of receipts from the disposal of surplus school sites. The County Council is dependent on local planning authorities giving favourable consideration to planning applications in such situations, where sale proceeds are to be used to improve education facilities, establish children's centres or enhance community and early years facilities, in the area.

The following planning areas had a surplus of more than 10% at January 2009. More details of these are given in the following sections of this Plan.

Primary schools:

- Basingstoke and Deane – Basingstoke Town planning area
- Basingstoke and Deane - Whitchurch planning area
- East Hampshire – Bordon/Liss/Liphook planning area
- Eastleigh – Hamble planning area
- Eastleigh – Eastleigh planning area
- Gosport planning area
- Hart – Yateley/Frogmore planning area
- Havant – Waterlooville/Cowplain planning area
- Havant – Havant/Hayling planning area
- New Forest – Dibden/South Waterside planning area
- Winchester – Bishops Waltham planning area

Secondary schools:

- Basingstoke and Deane – Basingstoke Town planning area
- East Hampshire – Horndean/Clanfield planning area
- Eastleigh – Eastleigh planning area
- Havant – Waterlooville/Cowplain planning area
- Havant – Havant/Hayling planning area
- New Forest – Totton/Waterside planning area
- Rushmoor – Aldershot/Farnborough planning area
- Test Valley – Andover planning area

It may also be appropriate for the County Council to review provision in areas where the current surplus is below 10% but forecasts indicate a significantly larger surplus by 2013/14.

Details of the numbers on roll and capacities of individual schools in January 2009 are given in Table 1, starting on page 54.

As the planning areas used in this Plan are based on secondary schools and their linked schools, within the district council area within which the secondary school is located, there are some primary schools that are listed under a different district council area. These are set out below:

School	SPP area	Actual District Council area
Barton Stacey Primary	Basingstoke and Deane	Test Valley
Denmead Infant / Junior	Havant	Winchester
Durley Primary	Eastleigh	Winchester
Four Mark's Primary	Winchester	East Hampshire
Hambledon Infant	Havant	Winchester
Hawley Primary	Rushmoor	Hart

Hurstborne Tarrant Primary	Basingstoke and Deane	Test Valley
Knightwood Primary	Eastleigh	Test Valley
Longparish Primary	Basingstoke and Deane	Test Valley
Otterbourne Primary	Eastleigh	Winchester
Preston Candover Primary	Winchester	Basingstoke and Deane
Ropley Primary	Winchester	East Hampshire
St Francis Primary	Eastleigh	Test Valley
Upham Primary	Eastleigh	Winchester
West Meon Primary	East Hampshire	Winchester

Special educational needs

As the organisation of schools and resourced provision catering for pupils with special educational needs often relates to an area wider than a single district, these have been treated as a separate, county-wide, planning area. Details of numbers in special schools and resourced provision attached to mainstream schools are given in Tables 2 and 3, on pages 74 and 75. As there is no formula based measure of the capacity of special schools, these tables show the “Annual Place Number”, which is the number of places for which the school is funded.

Primary School areas with more than 10% surplus

– January 2009



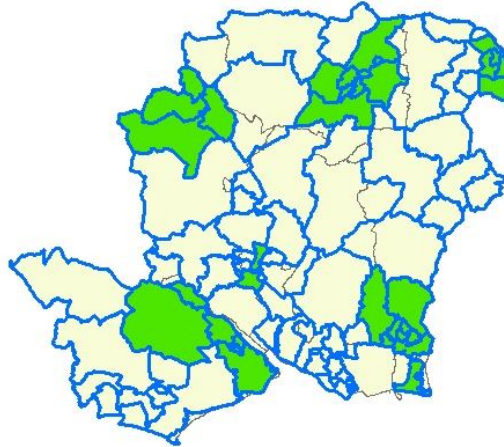
– January 2014



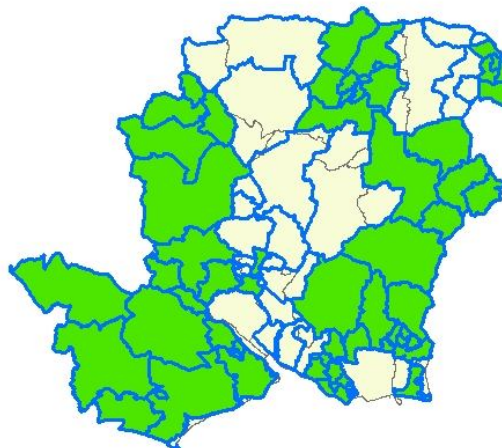
Shaded areas have more than 10% surplus

Secondary School areas with more than 10% surplus

– January 2009



– January 2014



Shaded areas have more than 10% surplus

Basingstoke and Deane area

Summary of school details

Primary Schools

Area	Net capacity	Number on roll	% surplus places	Net capacity	Number on Roll	% surplus places
	Jan 2009	Jan 2009	Jan 2009	Jan 2014	Jan 2014	Jan 2014
Basingstoke Town	10,761	9,674	10%	11,020	10,160	8%
Tadley	1,425	1,324	7%	1,425	1,394	2%
Kingsclere / Burghclere	1,170	1,083	7%	1,170	1,000	15%
Whitchurch	1,099	898	18%	1,099	878	20%

Secondary Schools

Area	Net capacity	Number on Roll	% surplus places	Net capacity	Number on Roll	% surplus places
	Jan 2009	Jan 2009	Jan 2009	Jan 2014	Jan 2014	Jan 2014
Basingstoke Town	7,711	6,305	18%	7,711	6,235	19%
Tadley	1,075	1,010	6%	1,075	889	17%
Kingsclere / Whitchurch	1,517	1,502	1%	1,517	1,398	8%

The Basingstoke and Deane Borough Local Plan 1996-2011 allocated a number of housing sites. Within the Basingstoke Town area, in addition to the completion of existing allocations at North Popley (Merton Rise) / Popley Fields (Marnel Park), Taylors Farm (Sherfield Park), Old Kempshott Lane and Park Prewett, specific sites are allocated for housing at the former John Hunt of Everest School site (400 units), West Ham Lane (minimum of 50), Aldermaston Road (300), Reading Road (37), Trumpet Junction (approximately 130), Churchill Way West (approximately 300) and South View (approximately 300). The Borough Council is now working towards preparing a Core Strategy as part of its Local Development Framework, to guide future development. Basingstoke has been designated a Growth Area and the South East Plan requires that an annual average of 945 net additional dwellings be built in the district. It is expected that the vast majority of these (915 per annum) will be built in the part of the district within the Western Corridor sub area; i.e. mainly in and around Basingstoke town.

Sites for new primary schools were allocated in the development briefs for Taylor's Farm and Park Prewett. Following detailed consideration and consultation with the governing bodies of the schools concerned, it has been agreed that the Taylor's Farm site will be added to the catchment area of existing schools in Chineham (Four Lanes Infant and Junior) and that any additional places required could be provided by extending Great Binfields Primary.

The need for a new primary school at Park Prewett will be kept under review in the light of the likely timing of development on the "reserve" site on the former golf course.

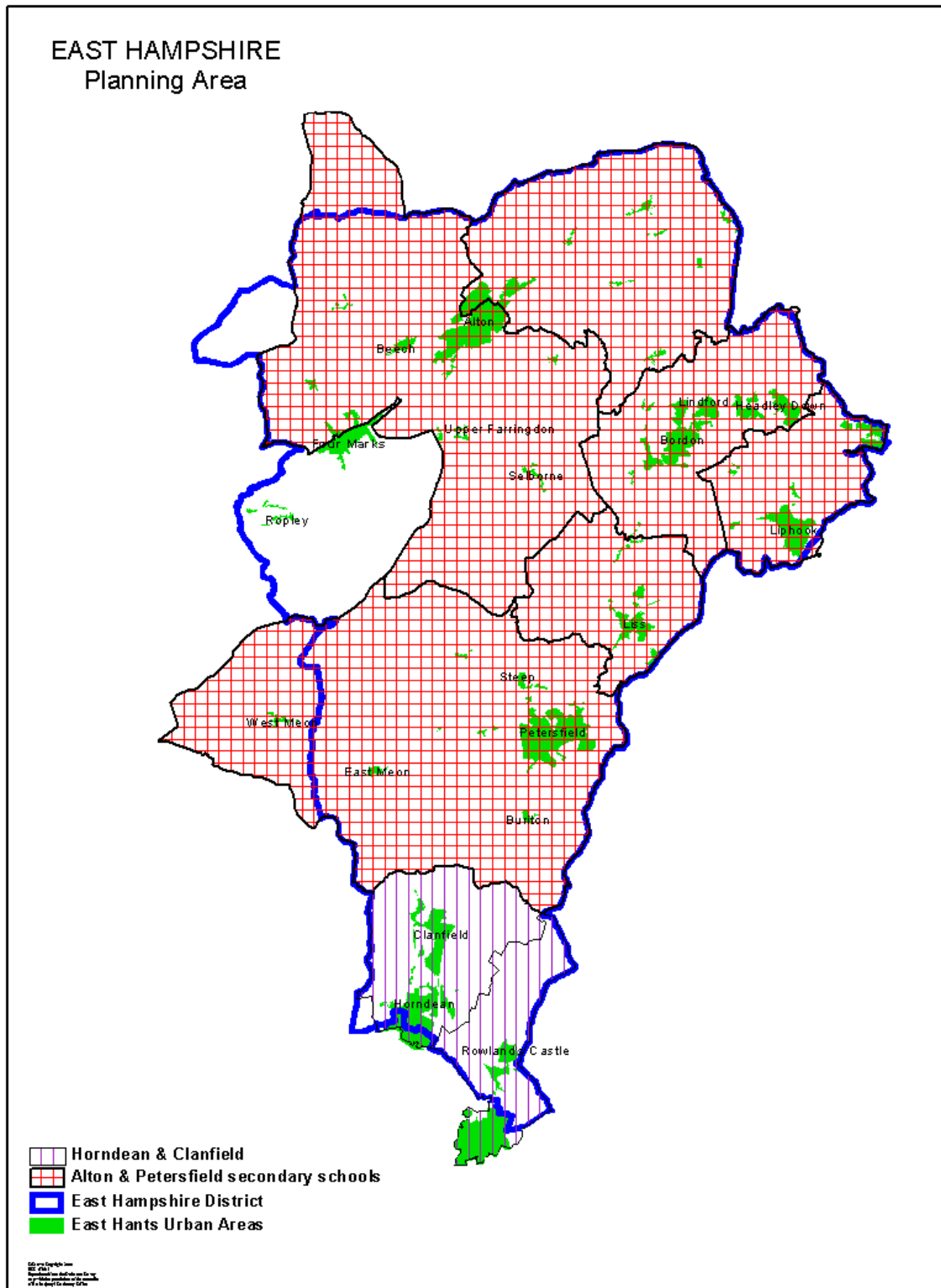
Other development (including North Popley / Popley Fields) will be served by existing schools, with additional accommodation where necessary. The provision of additional accommodation at Marnel Infant and Junior Schools is included in the County Council's capital programme, for completion by September 2009.

The relocation of John Hunt of Everest Secondary School (now known as Everest Community College) from its former site in Popley to County Council owned development land close to the planned new housing development in North Popley was implemented in September 2007.

Outside Basingstoke Town, the Local Plan allocates sites at Foxdown, Overton (approximately 75), Mulfords Hill, Tadley (approximately 40), Boundary Hall, Tadley (minimum of 100), Evingar Road and Park View, Whitchurch (30 and 60 units respectively). Provision for these developments will be made at existing schools, extended where necessary.

The existing surplus capacity at primary and secondary schools in the Basingstoke Town area will reduce as the effect of new housing works through and will be addressed as opportunities arise, post-2011, for improving secondary school facilities under the Building Schools for the Future programme. The position in other areas, particularly those where surpluses are predicted to increase, will be kept under review.

East Hampshire area



East Hampshire area

Summary of school details

Primary Schools

Area	Net capacity	Number on roll	% surplus places	Net capacity	Number on Roll	% surplus places
	Jan 2009	Jan 2009	Jan 2009	Jan 2014	Jan 2014	Jan 2014
Bordon / Liss / Liphook	3,112	2,674	14%	3,112	2,436	22%
Alton	2,481	2,259	7%	2,481	2,414	3%
Petersfield	1,476	1,344	9%	1,476	1,295	12%
Horndean / Clanfield	1,584	1,481	7%	1,584	1,439	9%

Secondary Schools

Area	Net capacity	Number on Roll	% surplus places	Net capacity	Number on Roll	% surplus places
	Jan 2009	Jan 2009	Jan 2009	Jan 2014	Jan 2014	Jan 2014
Alton / Petersfield	5,447	5,014	8%	5,447	4,727	13%
Horndean / Clanfield	1,595	1,208	24%	1,595	968	39%

The East Hampshire Local Plan identified sites at Alton (300 houses), East Meon (20), Four Marks (150), Holybourne (15), Liphook (150), Petersfield (12) and Whitehill (40). Twelve sites were also identified, in eight settlements, to meet the reserve allocation of 1,500 dwellings. It is not likely that any new schools will be required, although additional accommodation may well be needed at some schools as a result of development.

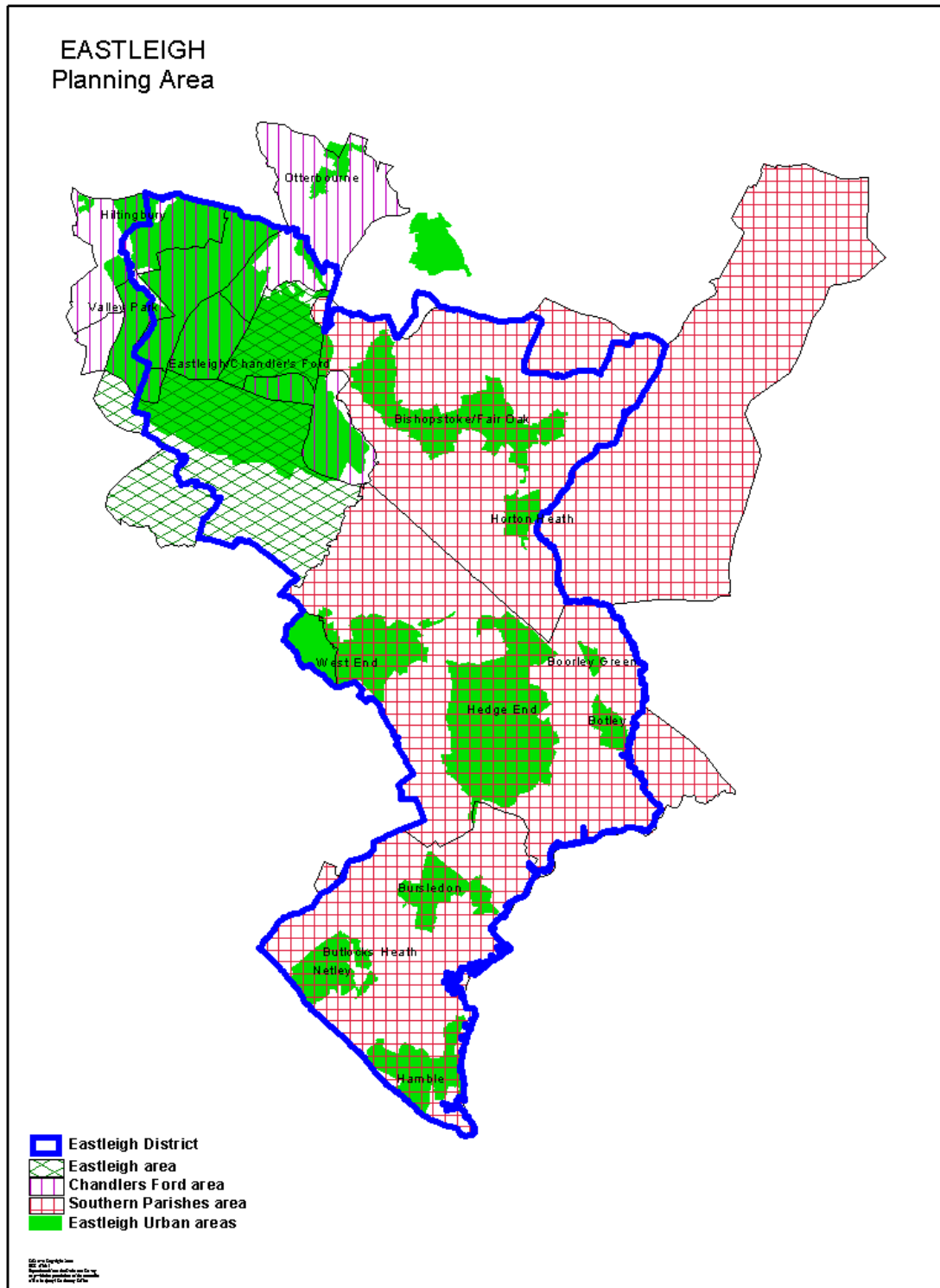
The South East Plan requires that an annual average of 260 net dwellings be built in the district, with about 60 of these in the South Hampshire part of the district. This requirement does not include any specific allocation for Whitehill / Bordon. There is a separate allocation (totalling 5,500 dwellings) for a strategic Development Area (SDA) at Whitehill / Bordon on Ministry of Defence land that is likely to come forwards for development.

Continued development in Liphook and Four Marks (in the Winchester: Alresford planning area) will increase the pressure on school places in those areas resulting in the need to consider additional places at the schools.

Although the Bordon/Liss/Liphook area has more than 10% surplus capacity at present, some of this may be required to cater for additional development at Whitehill – Bordon, if there is a major release of surplus Ministry of Defence land in the future. Options for development are being considered and details will depend on the final proposals, but it is likely that this would have a significant impact on future primary and secondary school provision, coupled with the need to maintain existing provision in the meantime as the service population moves out.

The growing surplus secondary school capacity in the Horndean / Clanfield area will be kept under review and opportunities sought to make appropriate use of the surplus accommodation.

Eastleigh area



Eastleigh area

Summary of school details

Primary Schools

Area	Net capacity	Number on roll	% surplus places	Net capacity	Number on Roll	% surplus places
	Jan 2009	Jan 2009	Jan 2009	Jan 2014	Jan 2014	Jan 2014
Hamble	1,525	1,111	27%	1,405	1,021	27%
Hedge End / West End	2,830	2,561	10%	2,830	2,649	6%
Fair Oak	1,787	1,656	7%	1,787	1,642	8%
Chandlers Ford	3,412	3,165	7%	3,268	3,119	5%
Eastleigh	1,651	1,315	20%	1,458	1,575	-8%

Secondary Schools

Area	Net capacity	Number on Roll	% surplus places	Net capacity	Number on Roll	% surplus places
	Jan 2009	Jan 2009	Jan 2009	Jan 2014	Jan 2014	Jan 2014
Southern Parishes	4,186	4,168	0%	4,364	3,953	9%
Chandlers Ford	2,450	2,470	-1%	2,450	2,292	6%
Eastleigh	1,402	1,056	25%	1,402	999	29%

At 31 March 2008 1054 dwellings were still to be built on sites allocated in the Eastleigh Borough Local Plan (432 at South Street, Eastleigh; 522 at Dowd's Farm, Hedge End; and 100 at Woodside Avenue, Eastleigh).

The Borough Council is progressing its Local Development Framework, which will replace the Local Plan. In addition to the Strategic Development Area referred to below, the South East Plan requires that an annual average of 354 net dwellings be built in the Borough (a total of 7,080 net dwellings between 2006 and 2026). As part of the evidence base for this work, a Strategic Land Availability Assessment (SLAA) is currently in preparation that will assess development potential on urban and greenfield sites for a range of uses, including residential development.

The SLAA is being carried out in two parts – the first will assess urban sites that have the potential for residential development, whilst the second will consider greenfield sites that could accommodate residential and other uses. The emerging findings from Part One of the SLAA indicate that the Borough has the potential to accommodate 4483 dwellings (this does not include the Local Plan Review allocations that have yet to be built) between 1 April 2008 and 31 March 2026 as follows, although these may be subject to change following further work:

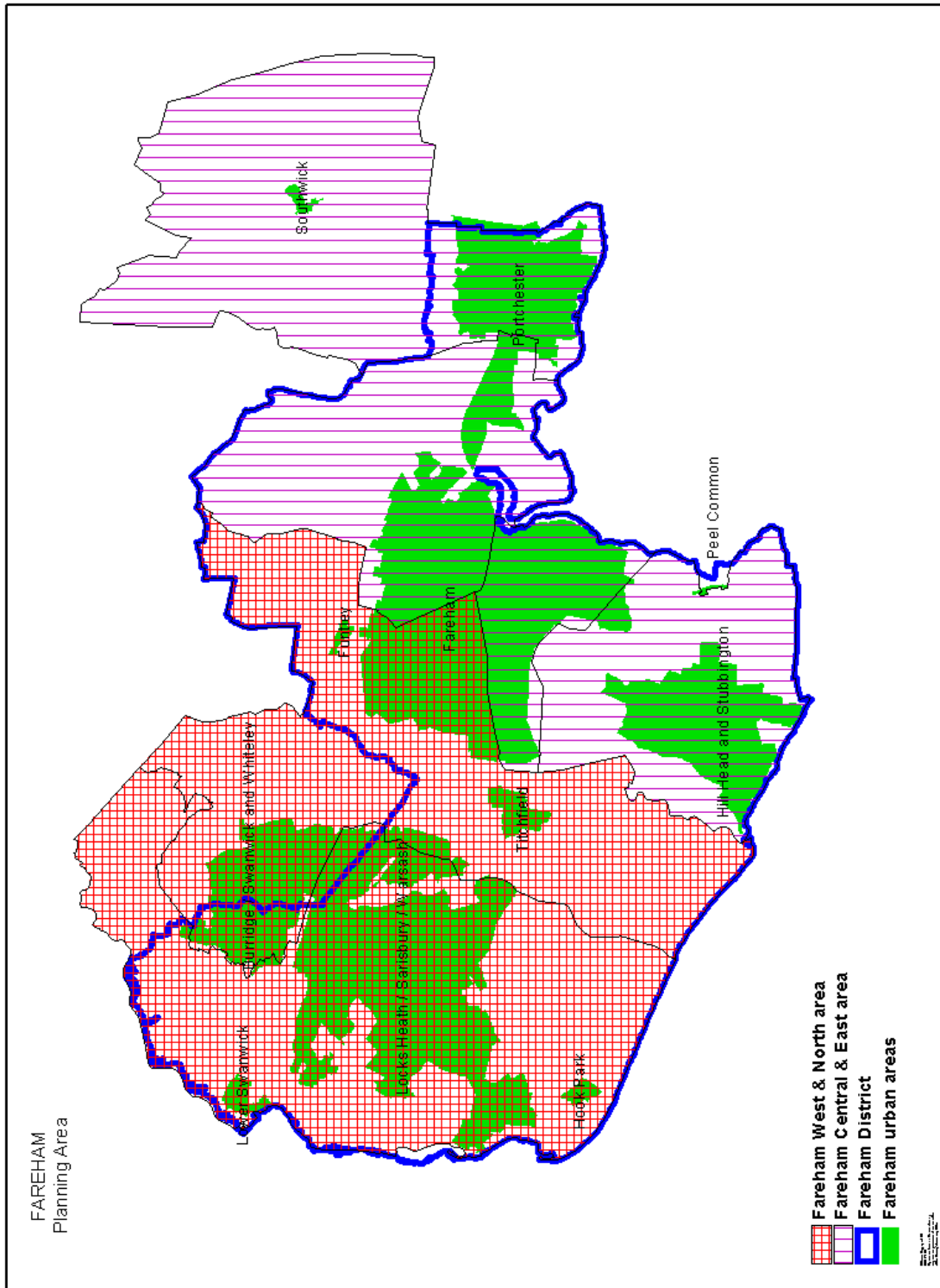
Area	2008 – 2013	2013 – 2018	2018 – 2023	2023 – 2026	Total 2008 – 2026
Eastleigh	500	781	1087	306	2674
Hedge End	40	292	0	104	436
Chandler's Ford	218	0	136	73	427
West End	68	24	153	46	291
Bishopstoke	66	85	0	34	185
Netley	71	51	0	0	122
Fair Oak	21	0	46	52	119
Bursledon	65	0	0	46	111
Botley	9	0	0	64	73
Hamble	12	0	29	0	41
Horton Heath	4	0	0	0	4
Total	1074	1233	1451	725	4483

Based on past completion rates, it is estimated that a further 700 dwellings could be delivered on small sites (sites of 9 dwellings and below) across the Borough between 2011 and 2026.

Although there are more than 10% surplus places in primary schools in the Eastleigh planning area, this will be taken up as the full effect of development in the central Eastleigh area is felt. The extent of surplus capacity at primary schools in the Hamble area, and at secondary schools in the Eastleigh area, is being kept under review. Ongoing development in Hedge End, including Dowds Farm, will continue to place pressure on secondary school places over the next few years.

In addition to the 7,080 net dwellings across the borough, the South East Plan proposes that there should be a Strategic Development Area north/north east of Hedge End, where 6,000 dwellings are proposed. This is likely to require at least three new primary schools and will necessitate consideration being given to the provision of a secondary school. The location and viability of the SDA will be tested through feasibility studies. As such, therefore, the provision of schools will be fully established once these studies have been completed.

Fareham area



Fareham area

Summary of school details

Primary Schools

Area	Net capacity	Number on roll	% surplus places	Net capacity	Number on Roll	% surplus places
	Jan 2009	Jan 2009	Jan 2009	Jan 2014	Jan 2014	Jan 2014
Fareham Central / East	4,783	4,500	6%	4,783	4,669	2%
Fareham West / North / Whiteley	4,495	4,129	8%	4,285	4,268	0%

Secondary Schools

Area	Net capacity	Number on Roll	% surplus places	Net capacity	Number on Roll	% surplus places
	Jan 2009	Jan 2009	Jan 2009	Jan 2014	Jan 2014	Jan 2014
Fareham Central / East	4,020	3,671	9%	4,020	3,571	11%
Fareham West / North	2,805	2,600	7%	2,805	2,668	5%

About half of the new housing allocations in the Fareham Borough Local Plan have been completed, with most of the remainder on four large sites at Peters Road Locks Heath (307 units), Hunts Pond Road Titchfield Common (339), north of Whiteley (113), and Coldeast Hospital (251 units). With the exception of Whiteley (see below), no new schools are currently proposed, although additional accommodation may be required at some existing schools.

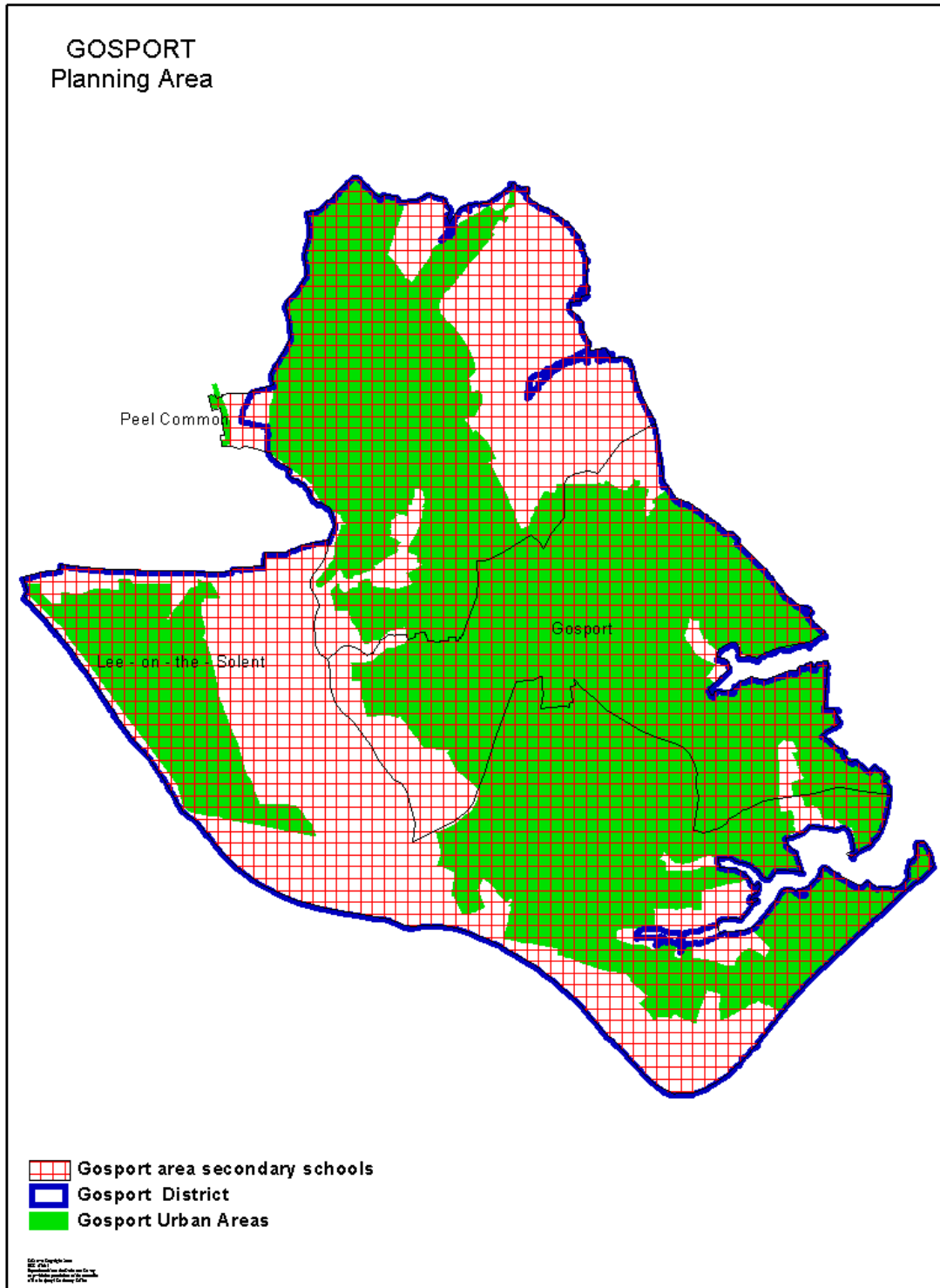
Work has commenced on the Fareham Local Development Framework (LDF) which will replace the Local Plan and provide for development up to 2026. The South East Plan requires that an annual average of 186 net dwellings are built in the district (3,720 net dwellings between 2006 and 2026). This requirement does not include the 10,000 dwellings that are to be built in the Fareham Strategic Development Area. The Strategic Housing Land Availability Assessment which has been prepared to support the preparation of the LDF identifies land for almost 3,250 dwellings in the Borough (including the four large sites listed above) for the period from April 2007 to 2026. Over half of these are in the Western Wards and around a third in Fareham with most of the latter on mixed use sites in the town centre. The study also estimates potential for some 1,950 dwellings on unidentified 'windfall' sites.

In the longer term it is proposed that housing development in the Borough will be concentrated in a Strategic Development Area to the North of Fareham which will require at least four new primary schools and a secondary school to provide for the pupils living in the 10,000 dwellings proposed.

Although there is a shortfall in primary school places within Whiteley, it has not been practicable to identify a site for an additional primary school, although this will be pursued in conjunction with proposals (in Winchester City Council's Core Strategy) for additional development in North Whiteley. In the meantime, places for Whiteley children for whom places are not available at Whiteley Primary School will be made available at schools in the surrounding area.

Development at North Whiteley (in Winchester District) will also provide the opportunity to consider the long term need for secondary school places in that area.

Gosport area



Gosport area

Summary of school details

Primary Schools

Area	Net capacity	Number on roll	% surplus places	Net capacity	Number on Roll	% surplus places
	Jan 2009	Jan 2009	Jan 2009	Jan 2014	Jan 2014	Jan 2014
Gosport	6,915	5,944	14%	6,872	6,208	10%

Secondary Schools

Area	Net capacity	Number on Roll	% surplus places	Net capacity	Number on Roll	% surplus places
	Jan 2009	Jan 2009	Jan 2009	Jan 2014	Jan 2014	Jan 2014
Gosport	5,041	4,550	10%	5,041	4,149	18%

There are a number of large sites within the Borough that are allocated in the Gosport Borough Local Plan or that had outstanding planning consent at April 2008, including Daedalus (152 with planning permission and 200 allocated remaining), Royal Clarence Yard (387 with planning permission remaining) and Coldharbour (50 allocated remaining).

The Borough Council is now working towards the progression of its Local Development Framework which will guide future development. The South East Plan requires an annual average of 125 net dwellings to be provided in the borough.

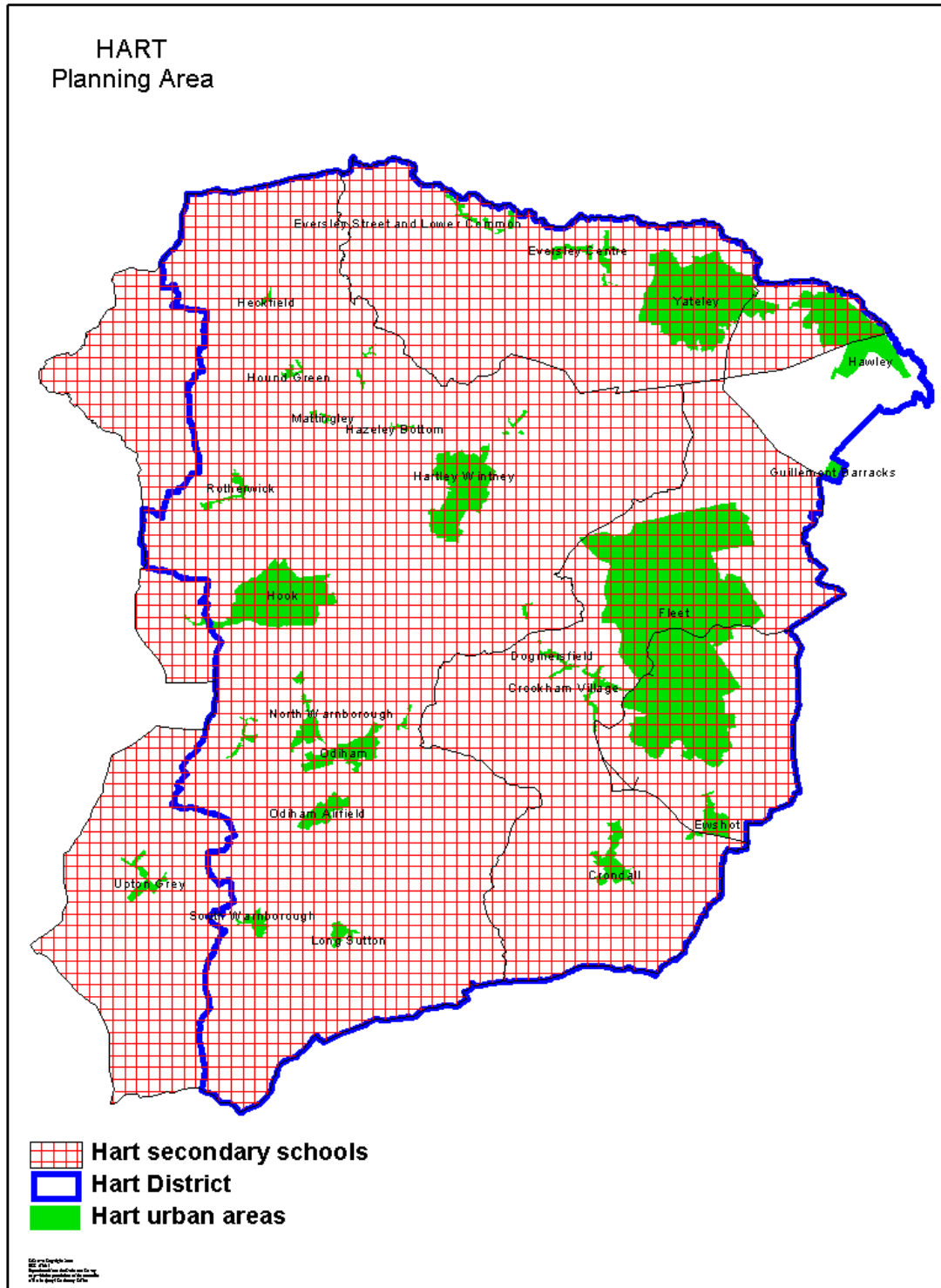
The Daedalus mixed use development allocation includes 300 married quarters for the Ministry of Defence of which 148 were complete by April 2008. The provision of married quarters is associated with proposals for the relocation of military facilities in the area and the impact is being closely monitored by the County Council and Borough Council, as there may be a significant influx of families from military establishments elsewhere in the country.

A significant redevelopment is taking place in the Rowner area involving the building of 700 new homes is proposed (a net addition of 200). This will have a local impact on numbers in primary schools.

No new schools are proposed to serve the Gosport area, although additional accommodation has been provided at some existing primary schools to cater for development at Cherque Farm and Daedalus.

The Gosport area has more than 10% surplus capacity at primary schools and action is being taken to reduce this by reviewing the use of accommodation at individual schools.

Hart area



Hart area

Summary of school details

Primary Schools

Area	Net capacity	Number on roll	% surplus places	Net capacity	Number on Roll	% surplus places
	Jan 2009	Jan 2009	Jan 2009	Jan 2014	Jan 2014	Jan 2014
Fleet / Crookham	3,448	3,450	0%	3,552	3,598	-1%
Yateley / Frogmore	2,219	1,958	12%	2,219	1,956	12%
Hook / Odiham	1,747	1,647	6%	1,747	1,520	13%

Secondary Schools

Area	Net capacity	Number on Roll	% surplus places	Net capacity	Number on Roll	% surplus places
	Jan 2009	Jan 2009	Jan 2009	Jan 2014	Jan 2014	Jan 2014
Hart	5,713	5,438	5%	5,713	5,504	4%

The Hart District Local Plan identifies a number of additional housing sites, including Queen Elizabeth Barracks, Church Crookham (1055 units), Holt Lane, Hook (285), Queens Road, North Warnborough (60) and Dilly Lane, Hartley Witney (at least 170). The Plan also identified a reserve site at Hitches Lane, Fleet (at least 300 units). Planning consent for this site was granted in March 2007. Construction is nearing completion on the major housing development at Elvetham Heath, Fleet, now likely to total 1,868 new houses (an increase of 10% above the original approval for 1,700 houses). The district council is now working towards preparing a Local Development Framework to guide future development. The South East Plan requires an annual average of 220 net dwellings in the district, almost all of which (215 new dwellings) is expected to be in the part of the district within the Western Corridor and Blackwater Valley sub area.

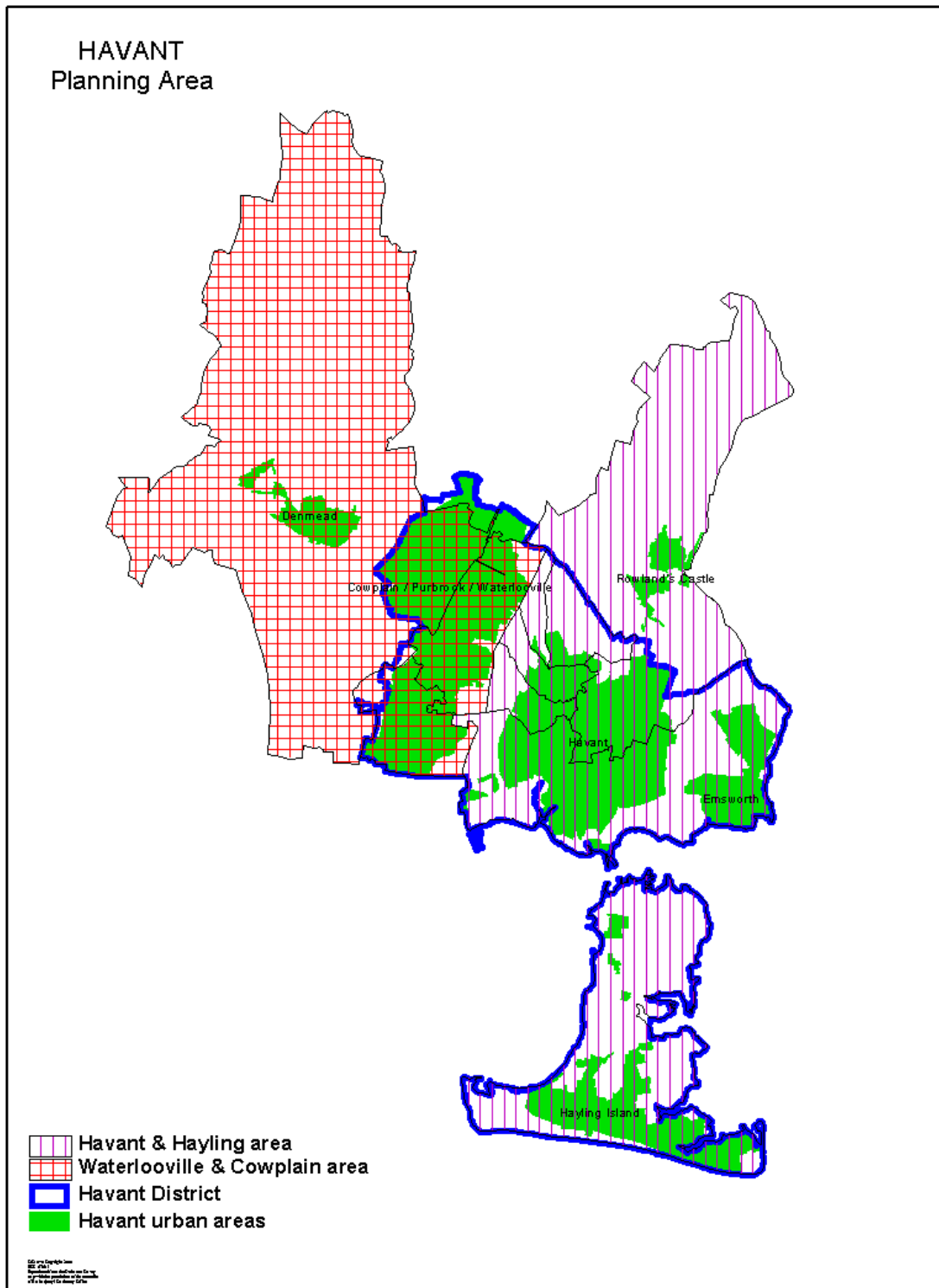
Much of the demand from this additional housing will be accommodated at existing primary and secondary schools, with increases to accommodation where necessary. A new two form entry primary school at Elvetham Heath was completed in September 2004. Proposals have been approved for the enlargement of that school to three form entry for completion by September 2009.

During 2002, the District Council published a draft development brief for Queen Elizabeth Barracks development. Proposals for development were considered at a public inquiry in the summer and autumn of 2007 following which the application was refused by the Secretary of State. The development brief includes a site for a primary school. If a fresh application for planning permission is submitted, consideration will be given to the alternatives of providing a new school or extending existing schools to cater for the additional demand.

Hitches Lane, Fleet has now received outline planning permission. Development on the Dilly Lane site has also been granted planning permission. Housing development on other sites is currently constrained by issues relating to the Thames Basin Heaths Special Protection Area.

Approved proposals for the amalgamation of Yateley Infant and St Peter's Junior schools will reduce the surplus capacity at primary schools in the Yateley / Frogmore area.

Havant area



Havant area

Summary of school details

Primary Schools

Area	Net capacity	Number on roll	% surplus places	Net capacity	Number on Roll	% surplus places
	Jan 2009	Jan 2009	Jan 2009	Jan 2014	Jan 2014	Jan 2014
Waterlooville / Cowplain	5,070	4,254	16%	5,190	4,749	8%
Havant / Hayling	5,197	4,469	14%	5,167	4,544	12%

Secondary Schools

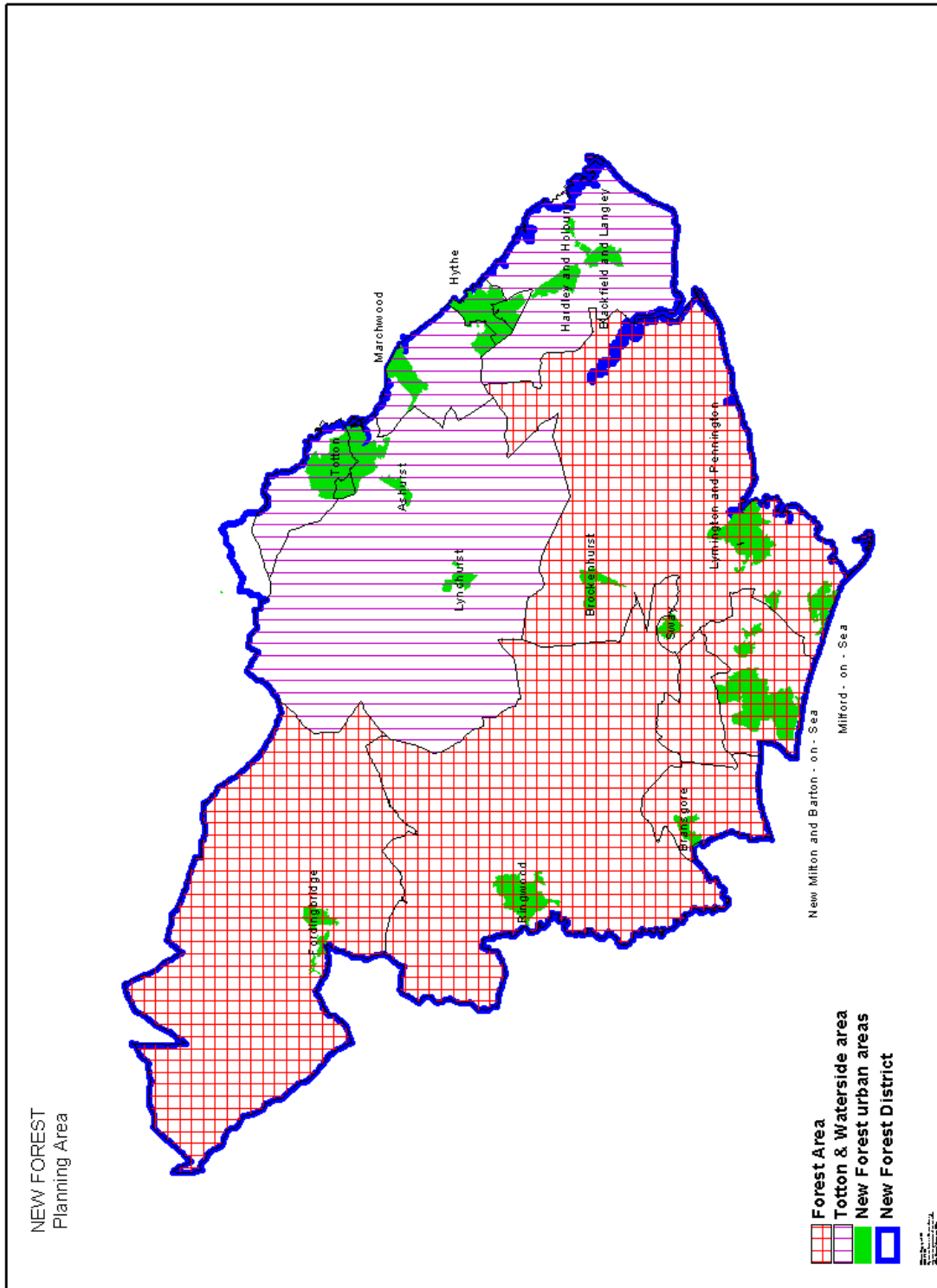
Area	Net capacity	Number on Roll	% surplus places	Net capacity	Number on Roll	% surplus places
	Jan 2009	Jan 2009	Jan 2009	Jan 2014	Jan 2014	Jan 2014
Waterlooville / Cowplain	4,369	3,898	11%	4,369	3,919	10%
Havant / Hayling	3,524	2,712	23%	3,524	2,388	32%

The Borough Council is progressing its Local Development Framework to replace the ‘saved policies’ of the HBDWLP and to conform with the South East Plan. This currently proposes the development of 6,300 new dwellings in the Borough between 2006 and 2026. It is expected that most of these will be built on sites within the existing urban areas, although some greenfield development is likely to be required. There are some ‘saved’ housing allocations that will contribute to the achievement of the housing target and these will be supplemented by the allocation of strategic sites in the Core Strategy and other sites in the Development Delivery (Allocations) Plan as these two documents evolve through the process.

The housing site with the largest impact on the borough is the West of Waterlooville Major Development Area (MDA). Although the majority of the MDA is located within the Winchester City boundary the development will impact on schools in Havant Borough. The MDA is intended to provide for 2,000 new dwellings. The Winchester Core Strategy Issues and Options document states that “given the scale of housing required in the area there will be a need to bring forward the reserve provision”. This number is therefore likely to increase to 3,000 new dwellings. The implementation of the MDA is being based on a Masterplan which identifies the location of housing and other development. Outline planning permission has been granted for a total of 2,000 dwellings south of Hambleton Road and west of London Road between Waterlooville and Purbrook. One new primary school is proposed in the local centre near Plant Farm, with secondary provision at one or more of the existing schools in the adjacent areas, extended as necessary. The extension of the MDA for more than 2,000 dwellings will require a further primary school (this would be outside the borough boundary in the Winchester area).

Primary schools in both planning areas in the Borough have more than 10% surplus capacity at present, although this will reduce as the impact additional development within the Borough or in adjoining areas is felt. In the meantime, some rationalisation of places may be appropriate. Proposals under the Building Schools for the Future programme will address the long term needs for secondary school places in the Borough.

New Forest area



New Forest area

Summary of school details

Primary Schools

Area	Net capacity	Number on roll	% surplus places	Net capacity	Number on Roll	% surplus places
	Jan 2009	Jan 2009	Jan 2009	Jan 2014	Jan 2014	Jan 2014
Ringwood / Fordingbridge	2,605	2,580	1%	2,605	2,622	-1%
Lymington / New Milton	3,641	3,337	8%	3,449	3,253	6%
Totton	3,032	2,822	7%	3,032	2,703	11%
Dibden / South Waterside	3,320	2,910	12%	3,320	2,841	14%

Secondary Schools

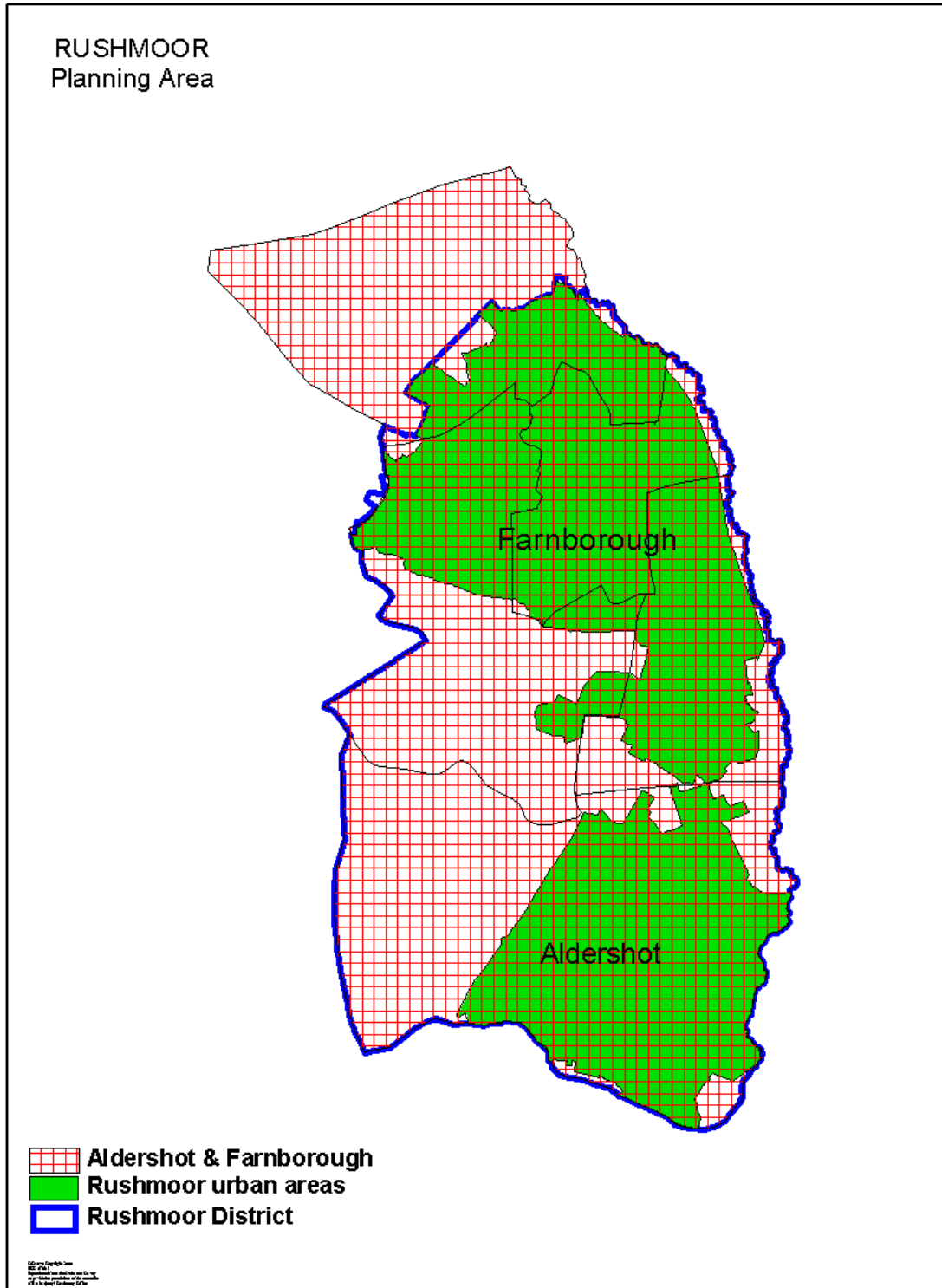
Area	Net capacity	Number on Roll	% surplus places	Net capacity	Number on Roll	% surplus places
	Jan 2009	Jan 2009	Jan 2009	Jan 2014	Jan 2014	Jan 2014
Forest	5,206	4,852	7%	5,376	4,777	11%
Totton / Waterside	5,538	4,657	16%	5,638	4,098	26%

New Forest District Council has submitted the Core strategy (outside the National Park area) to the Secretary of State and a public examination has been held. Over the period covered by the Core Strategy (2006-2026) there will be a significant fall in rates of new house-building required, to a net average of 196 dwellings per year. It is anticipated that the requirement for New Forest District, of 3,920 dwellings up to 2026, can be met by existing commitments and previously developed (“brownfield”) sites, and very limited new greenfield sites (for less than 300 dwellings, split between Totton and Ringwood). The South East Plan expects that an annual average of about 77 dwellings will be built within the South Hampshire sub region (Waterside area of New Forest District) and an annual average of 119 in the rest of the district.

Although capacity in primary schools in the Dibden / South Waterside areas has reduced following the amalgamation of the Blackfield, Langdown (Waterside Primary) and Holbury (Cadland Primary) schools, it may be necessary to consider further options to reduce surplus places. The forecast increase in surplus capacity at secondary schools will also be kept under review.

The New Forest National Park Authority assumed its full planning responsibilities in April 2006 and is now the local planning authority for the area of the National Park (mainly within New Forest District, but including small parts of Test Valley Borough and areas in Wiltshire). The National Park Authority published its consultation draft National Park Plan in the Summer of 2008 and is considering comments received, with a revised version of the Plan likely to be produced by the end of 2009. The New Forest National Park is not an appropriate location for major housing development, although there remains a need to provide for young families within the National Park, which may have an impact on school rolls within that area. The South East Plan gives the National Park a housing target of an additional 220 dwellings in the period to 2026.

Rushmoor area



Rushmoor area

Summary of school details

Primary Schools

Area	Net capacity	Number on roll	% surplus places	Net capacity	Number on Roll	% surplus places
	Jan 2009	Jan 2009	Jan 2009	Jan 2014	Jan 2014	Jan 2014
Aldershot	2,957	2,687	9%	3,167	2,824	11%
Farnborough / Cove	4,757	4,371	8%	4,757	4,366	8%

Secondary Schools

Area	Net capacity	Number on Roll	% surplus places	Net capacity	Number on Roll	% surplus places
	Jan 2009	Jan 2009	Jan 2009	Jan 2014	Jan 2014	Jan 2014
Aldershot / Farnborough	4,359	3,748	14%	3,666	3,579	2%

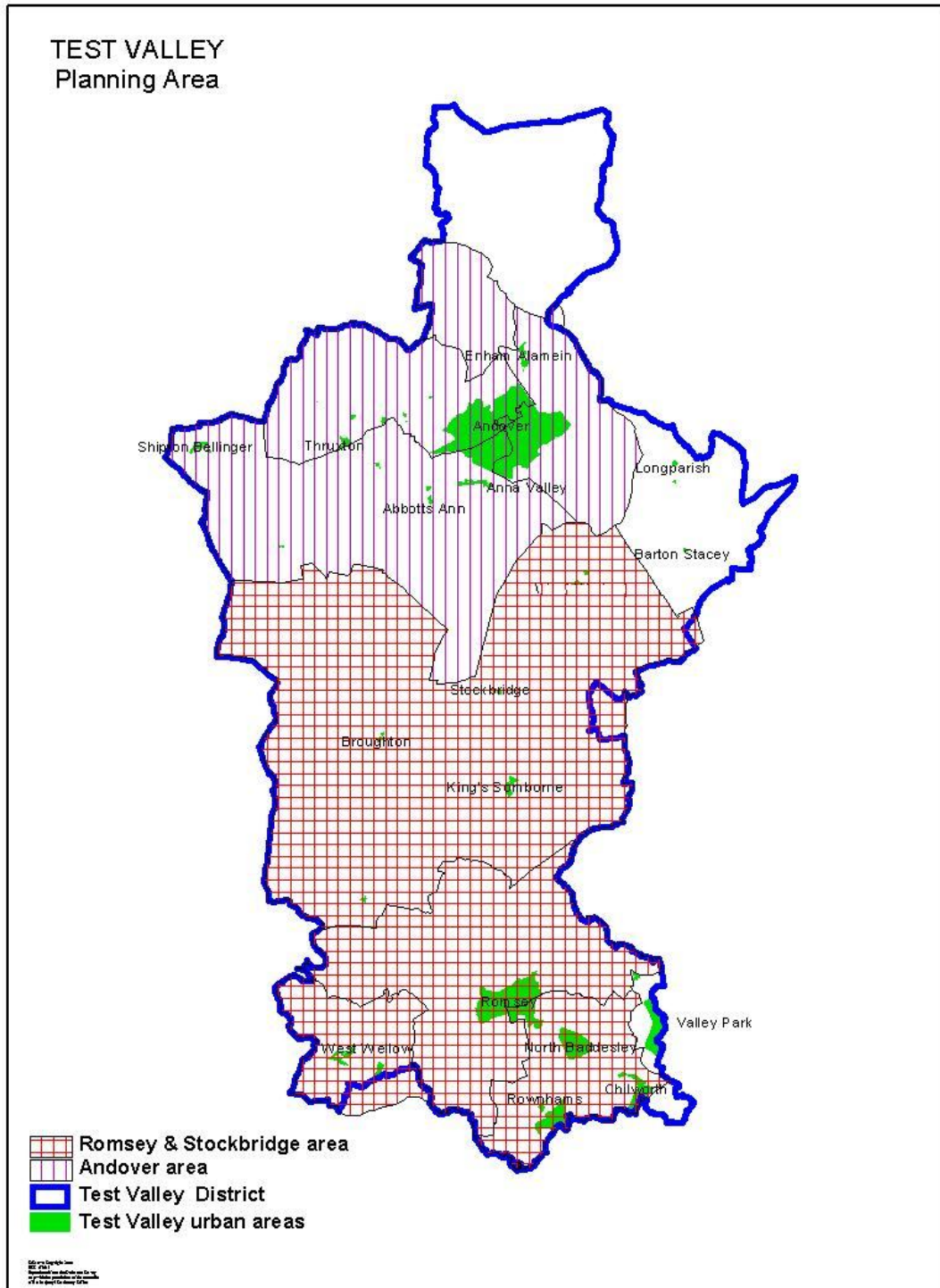
The adopted Rushmoor Local Plan Review sets out policies to guide development. In recent years no new schools have been required and pupils from the new development have been catered for in existing schools.

The Rushmoor Plan will be Rushmoor's "Local Development Framework (LDF)". The Core Strategy will set out the planning framework for the Borough up to 2026. It will set out a long term vision and objectives and contain planning policies that will be used to determine applications for planning permission as well as helping to implement land use elements of other plans and strategies. Evidence gathering, identification of issues and preparation of options is currently under way. In the autumn of 2009, it is planned to seek views on the options for the draft Core Strategy, for publication in September 2010. The South East Plan requires that an annual average of 310 dwellings are provided in the district.

The Ministry of Defence (MoD) has indicated that it proposes to release a substantial area of land, currently within Aldershot Military Town, for private development. Known as "Aldershot Urban Extension" this could include residential development in the region of 4,700 new dwellings. It represents the principal location to meet the Borough's housing requirements. The Borough Council has adopted Supplementary Planning Guidance to guide the MoD and their potential purchasers. The impact of this development is being monitored as details become available. It is likely that additional school accommodation will be required, which could include two new primary schools and extensions to existing secondary schools.

Approved proposals for the closure of Oak Farm School in August 2010 will reduce surplus secondary school capacity in that part of the borough. This is taken onto account in the above table.

Test Valley area



Test Valley area

Summary of school details

Primary Schools

Area	Net capacity	Number on roll	% surplus places	Net capacity	Number on Roll	% surplus places
	Jan 2009	Jan 2009	Jan 2009	Jan 2014	Jan 2014	Jan 2014
Andover	4,354	4,141	5%	4,900	4,549	7%
Romsey / Stockbridge	3,587	3,365	6%	3,829	3,571	7%

Secondary Schools

Area	Net capacity	Number on Roll	% surplus places	Net capacity	Number on Roll	% surplus places
	Jan 2009	Jan 2009	Jan 2009	Jan 2014	Jan 2014	Jan 2014
Andover	2,925	2,301	21%	2,925	2,290	22%
Romsey / Stockbridge	3,311	3,280	1%	3,311	2,917	12%

The Test Valley Borough Local Plan indicates that most of the requirement for new housing, apart from the MDA, can be met on previously developed land. Housing allocations at the Borden/AEP site, North Baddesley and Romsey Brewery are currently under way and a reserve site has been allocated at Abbottswood, Romsey, for which additional accommodation will need to be provided at the Cupernham schools.

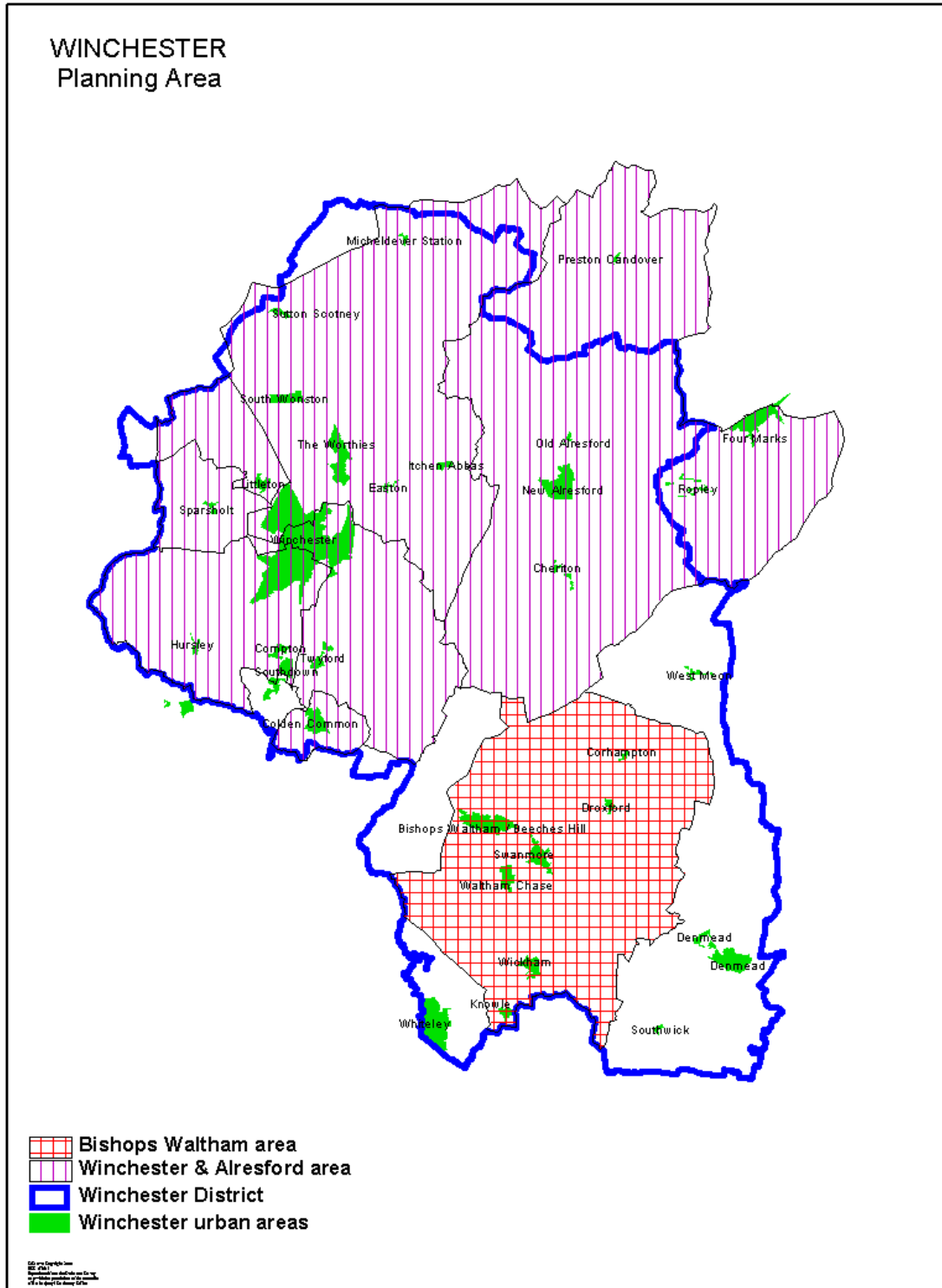
As part of the East of Icknield Way (East Anton) development, a site is allocated for a 3 form entry primary school. The first instalment of this school is included in the 2008/09 capital programme. In addition, a further site is safeguarded for a 2 form entry primary school to cater for further development post-2011, together with a site for a new or replacement secondary school, should demand arise during the plan period. Planning permission was granted in August 2008. At Picket Twenty a site is allocated for a 2 form entry primary school. Planning permission for this development was granted in January 2008.

The County Council's capital programme for 2008/09 also included the provision of new premises for Abbotts Ann Primary School, on a new site in the village This is due for completion at Easter 2010.

The Borough Council submitted its Core Strategy to the Secretary of State in March 2009 (but this has been temporarily withdrawn for further consideration). This identifies the main locations for residential development in the Borough over the next 20 years, including strategic sites at Andover, Romsey, North Baddesley and Nursling. The South East Plan requires 6,100 new dwellings in northern Test Valley; and 3,920 dwellings in southern Test Valley. The average annual dwelling requirement for Test Valley is 501 dwellings, of which 196 should be in the South Hampshire part of the district.

Surplus capacity in Andover secondary schools will be required to cater for growth arising from the MDA after 2014.

Winchester area



Winchester area

Summary of school details

Primary Schools

Area	Net capacity	Number on roll	% surplus places	Net capacity	Number on Roll	% surplus places
	Jan 2009	Jan 2009	Jan 2009	Jan 2014	Jan 2014	Jan 2014
Winchester	4,296	4,103	4%	4,296	4,590	-7%
Alresford	1,158	1,089	6%	1,158	1,172	-1%
Bishops Waltham	1,960	1,659	15%	1,880	1,692	10%

Secondary Schools

Area	Net capacity	Number on Roll	% surplus places	Net capacity	Number on Roll	% surplus places
	Jan 2009	Jan 2009	Jan 2009	Jan 2014	Jan 2014	Jan 2014
Winchester / Alresford	4,826	4,709	2%	4,861	4,452	6%
Bishops Waltham	1,350	1,311	3%	1,350	1,161	14%

The Winchester District Local Plan Review provides for development within the District's most sustainable settlements and for the development of a Major Development area at West of Waterlooville (see Havant area). The allocated development areas at Whiteley, Denmead and Knowle are now largely complete and additional places have been provided at Wickham Primary School to cater for development at Knowle.

"Local Reserve Sites" totalling 400 dwellings have been allocated at Winchester, Alresford and Denmead, which can be released if necessary to meet the Structure Plan's housing requirements. "Strategic Reserve Sites" are also allocated at West of Waterlooville (1,000 dwellings) and Winchester City North (2,000 dwellings) should the strategic planning authorities conclude that additional housing land is required. The educational impact of these will be assessed if these sites are brought forward.

The Winchester District Core Strategy Preferred Option (published in May 2009) proposes a strategy of concentrating major development at Winchester, Whiteley and West of Waterlooville. It also defines a settlement hierarchy for the smaller settlements, identifying the main service centres. In the Winchester Town area the Preferred Option proposes development of 2,000 dwellings at Winchester North (Barton Farm). In the southern part of the District a further 3,000 dwellings are proposed at North Whiteley, and at West of Waterlooville it is proposed to allocate the current "reserve" site, bringing the MDA to a total of 3,000 dwellings. Additional development of a smaller scale may also be needed in other settlements.

The South East Plan requires that a net annual average of 612 dwellings be provided in Winchester district, with a 337 of these being in the South Hampshire part of the district (which includes Whiteley and West of Waterlooville).

Development at North Whiteley will require at least two new primary schools, which can also redress any shortfall in places to serve the existing Whiteley area, and will provide the opportunity to consider the long term need for secondary school places in the area.

There is particular pressure on primary schools in parts of Winchester Town. To address this, additional accommodation is being provided at St Bede Primary and Weeke Primary, and further extensions will be considered to meet specific demand as it is identified, in addition to the new primary school that is required to serve development at Barton Farm.

There is more than 10% surplus capacity in primary schools in the Bishops Waltham area. Consideration will be given to ways that this can be reduced.

C3 Special Educational Needs

1. Special Schools and Resourced Provision

The organisation of provision for children with special educational needs tends to relate to a wider area than the planning areas for mainstream provision. The following issues are likely to give rise to proposals during the period covered by this Plan:

a) Schools for children with learning difficulties with complex needs

These schools cater for children with a range of learning difficulties, rather than the traditional distinction between moderate and severe learning difficulties. Where appropriate, separate schools covering the primary and secondary age phases may be established. The creation of schools for children with complex learning difficulties has already been implemented in Farnborough, Eastleigh, Winchester and Bordon (in new buildings on the site of The Meadow School, which opened in September 2006).

Following consultations, statutory proposals for the first stage of a review of schools for children with learning difficulties in the East New Forest area were approved in August 2007. This involves the amalgamation of Forest Edge and Salterns Schools, with effect from 1 September 2009. A second stage, accommodating all pupils of secondary age on the site of Oak Lodge School, will be brought forward when resources are available as part of the Building Schools for the Future programme.

Further proposals will be brought forward in other parts of the county when opportunities are identified.

b) Resourced provision in mainstream schools

In accordance with the policy of inclusion within the mainstream environment, resourced provision may be established to cater for particular categories of need. Such provision caters for pupils with emotional and behavioural difficulties; speech, language and communication needs or learning difficulties (particularly at primary schools) and autism / Aspergers Syndrome (at secondary schools). In addition, proposals may be made to resource schools (primary or secondary) to cater for children with physical disabilities or sensory impairment (particularly hearing or visual impairment).

Resourced provision for pupils with visual impairment has been created in the new buildings at Kings Copse Primary School, Hedge End. The reorganisation of special schools in Alton and Bordon included the establishment of resourced provision of children with learning difficulties at Mill Chase Secondary and Liss Junior School. Resourced provision has also been established at St Mark's CE Primary School, Basingstoke, and Cherbourg Primary School, Eastleigh, for pupils with Behaviour, Emotional and Social Difficulties. Proposals to establish resourced provision for secondary-age children with autistic spectrum disorder at Crofton School, with effect from 1 September 2010, were approved in March 2009.

Further opportunities to establish resourced provision will be brought forward as needs and opportunities arise.

c) Secondary school for children with emotional and behavioural difficulties

New premises for Prospect School, Havant (formerly Sundridge School) opened in September 2007. A further “new” BESD School will be established in Basingstoke – see below.

d) Provision for early years

The Early Years SEN Strategic Plan, adopted by the Education Committee in March 2000, proposes that opportunities should be developed to integrate provision for children of pre-school age with special educational needs with mainstream nursery provision in Early Years Centres. This may lead to proposals to alter the age ranges of some special schools which currently include pre-school provision.

2. Education other than at school

In September 2002 the County Council reorganised all EOTAS provision so that there is a single Education Centre (legally a Pupil Referral Unit – PRU) in each of the then seven education areas. In some cases, these occupy a single site. In others there is a combination of facilities under a single management.

New accommodation has been provided for Woodlands and Andover Education Centres and for the consolidation of The Bridge Education Centre (Eastleigh) on the site of the former Tankerville School. A site is being sought for replacement accommodation for Quayside Education Centre (Gosport). Further opportunities to improve accommodation at Education Centres will be made as opportunities arise.

To cater for needs in the Basingstoke area, Basingstoke School Plus was formed through the amalgamation of Hawthorns School and Ashwood Education Centre, as an interim arrangement whilst longer term needs were assessed. In September 2009 this was separated into two PRUs (Ashwood and Grangeside) with the intention that Grangeside, which caters for all statemented pupils, will become a BESD special school. This necessitates running a “new school competition” in which potential providers can make proposals for the establishment and governance of the school. As no such proposals were made in response to the competition invitation, the local authority has published its own proposals for the school to open as a community special school in September 2010.

Table 1**Numbers on Roll and School Capacities – January 2009**

DCSF no.	School Name	Net Capacity	NOR	% surplus
Primary Schools				
Basingstoke And Deane				
Basingstoke Town Area				
3022	Bramley C E Primary	420	369	12%
2321	Castle Hill Infant	180	175	3%
2272	Castle Hill Junior	240	249	-4%
2344	Chalk Ridge Primary	419	396	5%
3199	Chiltern Primary	315	245	22%
2780	Chineham Park Primary	175	98	44%
2041	Cliddesden Primary	90	112	-24%
2727	Fairfields Primary	408	406	3%
2749	Four Lanes Community Junior	330	323	2%
2392	Four Lanes Infant	254	253	0%
2011	Great Binfields Primary	210	186	11%
2470	Hatch Warren Infant	270	270	0%
2761	Hatch Warren Junior	314	353	-12%
2316	Kempshott Infant	270	265	2%
2286	Kempshott Junior	351	331	6%
2725	King's Furlong Infant And Nursery	210	201	4%
2726	Kings Furlong Junior	240	260	-8%
2341	Manor Field Infant	170	148	13%
2285	Manor Field Junior	240	188	22%
2298	Marnel Community Infant	210	150	29%
2287	Marnel Community Junior	240	240	0%
2271	Merton Infant	180	87	52%
2268	Merton Junior	240	179	25%
2148	North Waltham Primary	140	141	-1%
3120	Oakley Church of England Junior	270	271	0%
2328	Oakley Infant	189	168	11%
2012	Oakridge Infant	180	160	11%
2227	Oakridge Junior	240	207	14%

DCSF no.	School Name	Net Capacity	NOR	% surplus
2319	Old Basing Infant	270	249	8%
2731	Park View Infant	264	152	42%
2732	Park View Junior	300	237	21%
2320	Rucstall Primary	225	216	4%
3144	Sherborne St John Church of England Primary	105	111	-6%
2228	South View Infant	179	166	7%
2013	South View Junior	256	218	15%
3414	St Anne's Catholic Primary	210	224	-7%
3415	St Bede's Catholic Voluntary Aided Primary	236	271	-15%
3661	St John's Church of England Voluntary Aided Primary	315	234	26%
3665	St Mark's Church of England Primary	618	526	15%
3305	St Mary's Church of England Junior	356	352	1%
2223	Winklebury Infant	180	115	36%
2008	Winklebury Junior	240	172	28%
	Total	10,761	9,674	10%
Tadley Area				
2315	Bishopswood Infant	180	165	8%
2283	Bishopswood Junior	239	204	15%
3669	Burnham Copse Primary	210	218	-4%
3389	Silchester Church of England Primary	208	167	20%
2190	Tadley Community Primary	420	410	2%
5201	The Priory Primary	168	160	5%
	Total	1,425	1,324	7%
Kingsclere / Burghclere Area				
2119	Ashford Hill Primary	140	119	15%
2026	Burghclere Primary	119	119	0%
3050	Ecchinswell And Sydmonton CE Primary	120	75	38%
3082	Hurstbourne Tarrant C E Primary	105	105	0%
3088	Kingsclere Church of England Primary	266	252	5%
3325	St Martin's East Woodhay C E Voluntary Aided Primary	105	109	-4%
3177	St Thomas' Church of England Infant, Woolton Hill	135	131	3%
2384	Woolton Hill Junior	180	173	4%
	Total	1,170	1,083	7%

DCSF no.	School Name	Net Capacity	NOR	% surplus
Whitchurch Area				
3009	Barton Stacey C E Primary	119	92	23%
3357	Longparish C E Primary	105	105	0%
3119	Overton C E Primary	315	279	11%
2180	St Mary Bourne Primary	140	146	-4%
3170	Whitchurch C E Primary	420	276	34%
	Total	1,099	898	18%

East Hampshire

Bordon / Liss / Liphook Area				
2022	Bordon Infant	180	164	9%
2021	Bordon Junior	240	231	4%
3067	Grayslott C E Controlled Primary	210	205	2%
2086	Greatham Primary	210	208	1%
3183	Liphook Church of England (Controlled) Junior	350	346	1%
2342	Liphook Infant	270	248	8%
2291	Liss Infant	180	167	7%
2127	Liss Junior	243	234	4%
3310	St Matthew's Church of England (Aided) Primary, Blackmoor	210	169	20%
3215	The Holme Church of England (Controlled) Primary	210	123	41%
2204	Weyford Infant	269	153	43%
2288	Weyford Junior	330	224	32%
2753	Woodlea Primary	210	202	4%
	Total	3,112	2,674	14%

Alton Area				
2000	Alton Infant	180	150	17%
3344	Andrews' Endowed Church of England Primary	198	191	4%
2001	Anstey Junior	240	215	10%
3023	Bentley Church of England Primary	210	214	-2%
3012	Binsted Church of England Primary	84	63	25%
3029	Chawton Church of England Primary	112	144	-29%
3101	Medstead Church of England Primary	209	207	1%
3196	Rowledge Church of England (Controlled) Primary	203	211	-4%
3001	Saint Lawrence C E Primary	182	177	3%

DCSF no.	School Name	Net Capacity	NOR	% surplus
3660	Selborne Church of England Primary	99	101	-2%
3308	St Mary's Bentworth Church of England Primary	105	96	9%
2300	The Butts Primary	240	221	8%
2243	Wootey Infant	180	126	30%
2317	Wootey Junior	239	143	40%
	Total	2,481	2,259	9%
Petersfield Area				
2027	Buriton Primary	105	77	27%
3046	East Meon C E (Controlled) Primary	90	59	34%
3062	Froxfield Church of England Infant	40	36	10%
2170	Herne Junior	390	405	-4%
2125	Langrish Primary	210	206	2%
2162	Petersfield Infant	360	275	24%
2181	Sheet Primary	112	104	7%
3150	Steep Church of England (Voluntary Controlled) Primary	85	93	-9%
3168	West Meon Church of England (Voluntary Controlled) Primary	84	89	-6%
	Total	1,476	1,344	9%
Horndean / Clanfield Area				
3027	Catherington Church of England Infant	88	86	2%
2040	Clanfield Junior	360	287	20%
3081	Horndean Church of England (Controlled) Junior	479	503	-5%
2239	Horndean Infant	270	269	0%
2357	Petersgate Infant	177	154	13%
3136	Rowlands Castle St Johns Church of England (Controlled) Primary	210	182	13%
	Total	1,584	1,481	7%
Eastleigh				
Hamble Area				
3020	Bursledon Church of England Infant ⁷	270	180	33%
2304	Bursledon Junior ⁷	360	236	34%
2091	Hamble Primary	280	285	-2%
2373	Netley Abbey Infant	269	174	35%

⁷ Bursledon CE Infant and Bursledon Junior are federated

DCSF no.	School Name	Net Capacity	NOR	% surplus
2348	Netley Abbey Junior	346	236	32%
	Total	1,525	1,111	27%
Hedge End / West End Area				
2752	Berrywood Primary	630	655	-4%
3014	Botley Church of England (Controlled) Primary	315	248	21%
2115	Freegrounds Infant	270	246	9%
2267	Freegrounds Junior	360	360	0%
2347	Kings Copse Primary	210	153	27%
3184	Saint James' Church of England Primary, West End	408	410	0%
2224	Shamblehurst Primary	427	394	8%
2722	Wellstead Primary	210	95	55%
	Total	2,830	2,561	10%
Fair Oak Area				
3040	Durley C E (Controlled) Primary	112	112	0%
2071	Fair Oak Infant	354	352	1%
2263	Fair Oak Junior	598	548	8%
2018	Stoke Park Infant	263	223	15%
2030	Stoke Park Junior	360	325	10%
3395	Upham C E (Aided) Primary	100	96	4%
	Total	1,787	1,656	7%
Chandlers Ford Area				
2033	Chandler's Ford Infant	180	162	10%
2217	Fryern Infant	180	116	36%
2056	Fryern Junior	240	173	28%
2237	Hiltingbury Infant	267	268	0%
2274	Hiltingbury Junior	360	396	-10%
2009	Knightwood Primary	407	404	1%
2034	Merdon Junior	256	238	7%
3118	Otterbourne C E Primary	262	238	9%
2322	Scantabout Primary	210	209	0%
3663	St Francis C E Primary	420	420	0%
3419	St Swithun Wells Catholic Voluntary Aided Primary, Chandlers Ford	210	171	19%
2061	The Crescent Primary ⁸	420	370	12%

⁸ Federated with Norwood Primary (Eastleigh planning area)

DCSF no.	School Name	Net Capacity	NOR	% surplus
Total		3,412	3,165	7%
Eastleigh Area				
2062	Cherbourg Primary	378	334	12%
2763	Nightingale Primary	330	249	25%
2387	Norwood Primary ⁹	313	169	46%
2063	Shakespeare Infant	270	241	11%
2377	Shakespeare Junior	360	322	11%
Total		1,651	1,315	20%
Fareham				
Fareham Central / East Area				
2395	Castle Primary	420	420	0%
2216	Crofton Anne Dale Infant	270	243	10%
2049	Crofton Anne Dale Junior	359	372	-4%
2276	Crofton Hammond Infant	180	177	2%
2345	Crofton Hammond Junior	238	242	-2%
2252	Harrison Primary	588	585	1%
2309	Northern Infant	120	86	28%
2161	Northern Junior Community	240	179	25%
2306	Ranvilles Infant	180	152	16%
2289	Ranvilles Junior	267	257	4%
2388	Red Barn Community Primary	208	172	17%
2074	Redlands Primary	315	297	6%
3404	St Jude's Catholic Primary, Fareham	240	212	12%
2069	Uplands Primary	315	309	2%
2076	Wallisdean Infant	180	140	22%
2067	Wallisdean Junior	243	230	5%
2168	Wicor Primary	420	427	-2%
Total		4,783	4,500	6%
Fareham West / North / Whiteley Area				
3079	Hook-With-Warsash Church of England Primary	420	425	-1%
2249	Locks Heath Infant	360	351	3%
2128	Locks Heath Junior	480	506	-5%

⁹ Federated with The Crescent Primary (Chandlers Ford planning area)

DCSF no.	School Name	Net Capacity	NOR	% surplus
3216	Oak Meadow Church of England (Controlled) Primary, Fareham	360	197	34%
2717	Orchard Lea Infant	210	167	20%
2718	Orchard Lea Junior	256	231	10%
2313	Park Gate Primary	418	419	0%
3142	Salisbury Church of England Junior	358	350	2%
2282	Salisbury Infant	268	255	5%
3662	St Anthony's Catholic Primary, Titchfield Common	206	203	1%
3095	St John the Baptist Church of England Primary, Titchfield Common	420	234	44%
2193	Titchfield Primary	169	173	-2%
2778	Whiteley Primary	630	618	2%
	Total	4,495	4,129	8%

Gosport

3600	Alverstoke Church of England (Aided) Junior	240	275	-15%
2618	Alverstoke Community Infant	180	175	3%
2776	Bedenham Primary	315	227	28%
2627	Brockhurst Infant	180	142	21%
2602	Brockhurst Junior	265	201	24%
2607	Elson Infant	270	231	14%
2606	Elson Junior	336	272	19%
2625	Gomer Infant	180	167	7%
2631	Gomer Junior	203	245	-21%
2620	Grange Infant	210	184	12%
2619	Grange Junior	300	258	14%
2612	Haselworth Primary	178	109	39%
2777	Holbrook Primary	315	236	25%
2630	Lee-On-The-Solent Infant	213	269	-26%
2610	Lee-On-The-Solent Junior	335	353	-6%
3191	Leesland Church of England (Controlled) Infant	268	162	40%
3190	Leesland Church of England (Controlled) Junior	357	294	18%
3192	Newtown Church of England (Voluntary Controlled) Primary	410	411	0%
2622	Peel Common Infant and Nursery Unit	150	129	14%
2624	Peel Common Junior	210	200	5%
2617	Rowner Infant	180	138	23%
2616	Rowner Junior	240	196	18%
2623	Siskin Infant And Nursery	240	132	45%

DCSF no.	School Name	Net Capacity	NOR	% surplus
2621	Siskin Junior	240	153	36%
3602	St John's, Gosport Church of England (Voluntary Aided) Primary	420	396	6%
3650	St Mary's Catholic Voluntary Aided Primary, Gosport	270	259	4%
2613	Woodcot Primary	210	130	38%
	Total	6,915	5,944	14%
Hart				
Fleet / Crookham Area				
3330	All Saints Church of England (Aided) Junior	360	417	-16%
2229	Church Crookham Junior	352	361	-3%
2046	Cron dall Primary	209	200	4%
3666	Crookham C E (Aided) Infant	180	178	1%
3321	Dogmersfield Church of England (Aided) Primary	140	127	9%
2015	Elvetham Heath Primary	508	500	2%
2270	Fleet Infant	270	268	1%
2269	Heatherside Infant	300	293	2%
2278	Heatherside Junior	359	362	-1%
2324	Tavistock Infant	210	178	15%
2290	Tweseldown Infant	210	193	8%
2339	Velmead Junior	350	373	-7%
	Total	3,448	3,450	0%
Yateley / Frogmore Area				
3326	Charles Kingsley's Church of England Primary	189	217	-15%
2238	Frogmore Infant	180	174	3%
2279	Frogmore Junior	268	229	15%
2389	Newlands Primary	205	181	12%
2346	Potley Hill Primary	315	295	6%
5212	St Peter's Church of England Junior	180	82	54%
2257	Westfields Infant	270	246	9%
2242	Westfields Junior	432	443	-3%
2331	Yateley Infant	180	91	49%
	Total	2,219	1,958	12%
Hook / Odiham Area				
2155	Buryfields Infant	210	172	18%
2376	Greenfields Junior	196	204	-4%
2723	Hook Infant	270	296	-10%

DCSF no.	School Name	Net Capacity	NOR	% surplus
2325	Hook Junior	414	358	14%
3096	Long Sutton Church of England Primary	108	127	-18%
2383	Mayhill Junior	240	217	10%
2094	Oakwood Infant	169	162	4%
3213	Whitewater Church of England Primary	140	111	21%
	Total	1,474	1,647	6%
Havant				
Waterlooville / Cowplain Area				
2054	Denmead Infant	270	219	19%
2323	Denmead Junior	360	298	17%
2092	Hambledon Infant	87	65	25%
2215	Hart Plain Infant	270	204	24%
2740	Hart Plain Junior	360	313	13%
2361	Hulbert Junior	240	172	28%
2275	Meadowlands Infant ¹⁰	180	77	57%
2741	Meadowlands Junior ¹⁰	240	103	57%
2774	Morelands Primary	315	256	19%
2214	Padnell Infant	270	204	24%
2213	Padnell Junior	360	305	15%
2167	Purbrook Infant	270	270	0%
2297	Purbrook Junior	359	385	-7%
2750	Queens Inclosure Primary	416	381	8%
5209	St Peters Catholic Voluntary Aided Primary, Waterlooville	417	438	-5%
3407	St Thomas More's Catholic Voluntary_Aided Primary, Havant	266	287	-8%
2169	Stakes Hill Infant	180	135	25%
2775	Waite End Primary	210	142	32%
3670	Woodcroft Primary	Opened April 2009		
	Total	5,070	4,254	16%
Havant / Hayling Area				
2097	Barncroft Infant	180	145	19%
2096	Barncroft Junior	270	182	33%
2396	Bidbury Infant	180	159	12%
2336	Bidbury Junior	262	195	26%
2116	Bosmere Junior	360	360	0%
2767	Emsworth Primary	242	192	21%
2095	Fairfield Infant	256	230	10%

¹⁰ Amalgamated in April 2009 as Woodcroft Primary

DCSF no.	School Name	Net Capacity	NOR	% surplus
2099	Front Lawn Infant	180	131	27%
5200	Front Lawn Junior	240	203	15%
2246	Mengham Infant	180	117	35%
2335	Mengham Junior	180	145	19%
5210	Mill Rythe Infant	267	221	17%
2106	Mill Rythe Junior	338	326	4%
2101	Riders Infant	180	150	17%
2100	Riders Junior	243	227	7%
2020	Sharps Copse Primary and Nursery	351	266	24%
3346	St Alban's Church of England (Aided) Primary, Havant	210	220	-5%
3052	St James Church of England (Controlled) Primary, Emsworth	238	242	-2%
2104	Trosnant Infant	180	137	24%
2103	Trosnant Junior	240	212	12%
2254	Warren Park Primary	420	409	3%
	Total	5,197	4,469	14%

New Forest

Ringwood / Fordingbridge Area

3017	Brangsgore Church of England Primary	300	339	-13%
3018	Breamore Church of England Primary	147	142	3%
2028	Burley Primary	105	106	-1%
2372	Fordingbridge Infant	179	158	11%
2367	Fordingbridge Junior	238	239	0%
2090	Hale Primary	89	93	-4%
3083	Hyde Church of England Primary	70	69	1%
2310	Poulner Infant	210	212	-1%
2266	Poulner Junior	346	349	-1%
3132	Ringwood Church of England Infant	268	270	-1%
2175	Ringwood Junior	360	364	-1%
2183	Sopley Primary	105	104	1%
3426	Western Downland Church of England Aided Primary	189	135	29%
	Total	2,605	2,580	1%

Lymington / New Milton Area

2005	Ashley Infant	189	157	17%
5208	Ashley Junior	288	269	7%
2014	Beaulieu Village Primary	105	111	-6%

DCSF no.	School Name	Net Capacity	NOR	% surplus
3019	Brockenhurst Church of England Primary	210	200	5%
5206	Hordle Church of England Primary	310	331	-7%
3358	Lymington Church of England Infant	180	169	6%
2332	Lymington Junior	243	239	2%
3365	Milford-On-Sea Church of England Primary	315	304	3%
2137	New Milton Infant	330	231	30%
2140	New Milton Junior	444	371	16%
3409	Our Lady & St Joseph Catholic Primary, Lymington	105	112	-7%
3124	Pennington Church of England Junior	208	179	14%
2241	Pennington Infant	180	115	36%
3146	South Baddesley Church of England Primary	105	114	-9%
3149	St Luke's Church of England Primary	205	212	-3%
2111	Tiptoe Primary	119	120	-1%
3311	William Gilpin Church of England Primary	105	103	2%
	Total	3,641	3,337	8%
Totton Area				
5202	Abbotswood Junior	600	613	-2%
3197	Bartley Church of England Junior	353	344	3%
2330	Calmore Infant	180	170	6%
5203	Calmore Junior	256	220	14%
3032	Copythorne Church of England Infant ¹¹	89	73	18%
2196	Eling Infant	90	95	-6%
2299	Foxhills Infant	266	214	20%
2197	Foxhills Junior	386	321	17%
2739	Hazel Wood Infant	240	235	2%
2194	Lydlynch Infant	186	154	17%
3110	Netley Marsh Church of England Infant ¹¹	90	90	0%
2256	Oakfield Primary	209	206	1%
3360	St Michael And All Angels Church of England Infant ¹¹	87	87	0%
	Total	3,032	2,822	7%
Dibden / South Waterside Area				
5205	Blackfield Primary ¹²	540	497	8%
3667	Cadland Primary	403	311	23%

¹¹ Copythorne, Netley Marsh and St Michael and All Angels Infant Schools are federated

¹² Blackfield Primary and Fawley Infant are federated

DCSF no.	School Name	Net Capacity	NOR	% surplus
2077	Fawley Infant ¹²	90	76	16%
2113	Hythe Primary	315	304	3%
2359	Manor Infant	90	77	14%
3100	Marchwood Church of England Infant	270	210	22%
2378	Marchwood Junior	330	255	23%
2230	Orchard Infant	270	262	3%
2248	Orchard Junior	379	407	-7%
2089	Waterside Primary	210	172	18%
2057	Wildground Infant	180	137	24%
2055	Wildground Junior	243	202	17%
	Total	3,320	2,910	12%

Rushmoor

Aldershot Area

2532	Beaumont Junior	208	149	28%
2729	Belle Vue Infant ¹³	270	188	30%
2516	Marlborough Infant	139	126	9%
2730	Newport Junior ¹³	263	253	4%
2728	Park Primary	210	174	17%
5204	St Joseph's Catholic Primary	477	458	4%
3185	St Michael's Church of England (Controlled) Infant	260	256	2%
3186	St Michael's Church of England (Controlled) Junior	350	369	-5%
2526	Talavera Infant	270	237	12%
2523	Talavera Junior	360	352	2%
2508	West End Infant	150	125	17%
	Total	2,957	2,687	9%

Farnborough / Cove Area

2016	Cherrywood Community Primary	210	183	13%
2511	Cove Infant	180	164	9%
2510	Cove Junior	293	296	-1%
2522	Farnborough Grange Nursery/Infant & Early Years Centre	180	121	33%
2735	Fernhill Primary	208	187	10%
2521	Grange Community Junior	204	184	10%
2533	Guillemont Junior	380	317	17%
2105	Hawley Primary	315	308	2%

¹³ Belle Vue Infant and Newport Junior are federated

DCSF no.	School Name	Net Capacity	NOR	% surplus
2524	Manor Infant	270	190	30%
2520	Manor Junior	360	319	11%
2519	North Farnborough Infant	180	174	3%
2530	Parsonage Farm Nursery And Infant	180	176	2%
2534	Pinewood Infant	90	87	3%
2517	South Farnborough Infant	243	216	11%
2531	South Farnborough Junior	240	262	-9%
2742	Southwood Infant	150	132	12%
3553	St Bernadette's Catholic Voluntary Aided Primary	315	321	-2%
3501	St Mark's Church of England (Aided) Primary , Farnborough	105	109	-4%
3551	St Patrick's Catholic Voluntary Aided Primary, Farnborough	210	221	-5%
3500	St Peter's Church of England (Aided) Junior	235	228	3%
2512	Tower Hill Community	209	176	16%
	Total	4,757	4,371	8%

Test Valley

Andover Area

3000	Abbott's Ann Church of England Primary	102	104	-2%
3300	Amport C E Primary	84	80	5%
3004	Andover C E Primary	210	214	-2%
2226	Anton Infant	180	168	7%
2004	Anton Junior	240	249	-4%
3301	Appleshaw, St Peter's Church of England Primary	105	102	3%
2354	Balksbury Infant	270	265	2%
2002	Balksbury Junior	359	283	21%
3396	Clatford C E Primary	210	202	4%
2085	Grateley Primary	105	91	13%
3341	Hatherden Church of England Primary	119	106	11%
3401	Kimpton, Thrupton And Fyfield Church of England Primary	172	152	12%
2301	Knights Enham Infant	135	149	-10%
2284	Knights Enham Junior	180	178	1%
2007	Portway Infant	270	257	5%
2003	Portway Junior	360	349	3%
2318	Roman Way Primary	191	185	3%
2182	Shipton Bellinger Primary	196	197	-1%
3390	Smannell And Enham C E Primary	87	104	-20%

DCSF no.	School Name	Net Capacity	NOR	% surplus
3418	St John The Baptist Catholic Primary	180	209	-16%
3163	Vernham Dean Gillum's C E Primary	105	97	8%
2220	Vigo Infant	189	176	7%
2219	Vigo Junior	305	223	27%
	Total	4,354	4,140	5%
Romsey / Stockbridge Area				
3003	Ampfield C E Primary	70	50	29%
2006	Awbridge Primary	145	145	0%
2023	Braishfield Primary	98	88	10%
2025	Broughton Primary	84	72	14%
2329	Cupernham Infant	180	159	12%
2176	Cupernham Junior	240	241	0%
2312	Halterworth Community Primary	414	422	-2%
3089	King's Somborne Church of England Primary	157	102	35%
3356	Lockerley Endowed Church of England Primary	105	92	12%
2036	North Baddesley Infant	179	169	6%
2265	North Baddesley Junior	240	238	1%
3112	Nursling Church of England Primary	210	208	1%
3382	Romsey Abbey C E Primary	210	207	1%
3668	Romsey Primary	210	173	18%
3137	Rownhams St John's Church of England Primary	279	293	-5%
2186	Stockbridge Primary	126	116	8%
2200	Wallop Primary	210	180	14%
2202	Wellow Primary	210	205	2%
3169	West Tytherley Church of England Primary	94	85	10%
2203	Wherwell Primary	126	120	5%
	Total	3,587	3,365	6%
Winchester				
Winchester Area				
3172	All Saints Church of England Primary	140	128	9%
2382	Colden Common Primary	269	254	6%
3318	Compton All Saints' Church of England Primary	119	121	-2%
2736	Harestock Primary	258	246	5%
2117	Itchen Abbas Primary	91	90	1%
3345	John Keble Church of England Primary	112	107	4%
2120	Kings Worthy Primary	327	298	9%

DCSF no.	School Name	Net Capacity	NOR	% surplus
2017	Micheldever Church of England Primary	105	81	23%
2326	Oliver's Battery Primary	262	229	13%
2157	Owslebury Primary	70	85	-21%
2314	South Wonston Primary	415	307	26%
3147	Sparsholt C E Primary	105	117	-11%
3181	St Bede Church of England Primary	300	312	-4%
3399	St Faith's C E Primary	140	135	4%
3417	St Peter's Catholic Voluntary Aided Primary, Winchester	298	323	-8%
2206	Stanmore Primary	315	296	6%
3156	Twyford St Mary C E Primary	140	137	2%
2737	Weeke Primary	280	284	-1%
3176	Western Church of England Primary	410	421	-3%
2211	Winnall Primary	140	132	6%
	Total	4,296	4,103	4%
Alesford Area				
2035	Cheriton Primary	105	104	1%
3061	Four Marks C E Primary	294	266	10%
3126	Preston Candover Church of England Primary	140	138	1%
3138	Ropley Church of England Primary	175	170	3%
2255	Sun Hill Infant	180	172	4%
2146	Sun Hill Junior	264	239	9%
	Total	1,158	1,089	6%
Bishops Waltham Area				
2019	Bishops Waltham Infant	180	132	27%
2273	Bishops Waltham Junior	320	230	28%
2047	Curridge Primary	119	112	6%
2053	Droxford Junior	180	149	17%
3102	Meonstoke Church of England Infant	81	72	11%
2147	Newtown Soberton Infant	75	63	16%
3143	St John The Baptist C E (Controlled) Primary, Waltham Chase	315	329	-4%
3392	Swanmore Church of England (Aided) Primary	420	405	4%
3171	Wickham C E Primary	270	167	38%
	Total	1,960	1,659	15%
Total Primary Schools		103,854	93,959	10%

DCSF no.	School Name	Net Capacity	NOR	% surplus
----------	-------------	--------------	-----	-----------

Secondary Schools

Basingstoke And Deane

Basingstoke Town Area

4156	Aldworth Science College	1,010	606	40%
4604	Bishop Challoner Voluntary Aided Catholic Secondary School	626	652	-4%
4182	Brighton Hill Community College	1,275	1,264	1%
4002	Costello Technology College	1,120	995	11%
4164	Cranbourne Business and Enterprise College	1,300	832	36%
4169	Everest Community College	847	538	36%
4187	Fort Hill Community School	783	692	12%
4180	The Vyne Community School	750	726	3%
	Total	7,711	6,305	18%

Tadley Area

4144	Hurst Community College	1,075	1,010	6%
	Total	1,075	1,010	6%

Kingsclere / Whitchurch Area

5410	Testbourne Community School	792	779	2%
4162	The Clere School and Technology College	725	723	0%
	Total	1,517	1,502	1%

East Hampshire

Alton / Petersfield Area

4100	Amery Hill School	1,000	918	8%
5407	Bohunt School	1,250	1,263	-1%
4000	Eggar's School	814	847	-4%
4139	Mill Chase Community Technology College	1,083	768	32%
5418	The Petersfield School – A Performing Arts College	1,300	1,248	4%
	Total	5,447	5,014	8%

Horndean / Clanfield Area

4173	Horndean Technology College	1,595	1,208	24%
	Total	1,595	1,208	24%

DCSF no.	School Name	Net Capacity	NOR	% surplus
Eastleigh				
Southern Parishes Area				
4119	Hamble Community Sports College	1,015	1,015	0%
4127	Wildern School	1,806	1,830	-1%
4161	Wyvern Technology College	1,365	1,323	3%
	Total	4,186	4,168	0%
Chandlers Ford Area				
4175	Thornden School	1,400	1,411	-1%
4113	The Toynbee School	1,050	1,059	-1%
	Total	2,450	2,470	-1%
Eastleigh Area				
4191	Crestwood College for Business and Enterprise	665	565	15%
4152	Quilley School of Engineering	737	491	33%
	Total	1,402	1,056	25%
Fareham				
Fareham Central / East Area				
5416	Cams Hill School	1,056	1,041	1%
5405	Crofton School	1,119	1,075	4%
4308	The Neville Lovett Community School and Continuing Education Centre	985	763	11%
4133	Portchester Community School	860	763	11%
	Total	4,020	3,671	9%
Fareham West / North Area				
4136	Brookfield Community School and Language College	1,755	1,742	1%
4307	The Henry Cort Community College	1,050	858	18%
	Total	2,805	2,600	7%
Gosport				
5408	Bay House School and Sixth Form	2,072	2,135	-3%
4314	Bridgemary Community Sports College	1,214	772	36%
4315	Brune Park Community College	1,755	1,646	6%
	Total	5,041	4,550	10%

DCSF no.	School Name	Net Capacity	NOR	% surplus
Hart				
4171	Calthorpe Park School	1,050	984	6%
4117	Court Moor School	1,100	1,101	0%
4183	Frogmore Community College	1,007	569	43%
4511	Robert May's School	1,200	1,224	-2%
4166	Yateley School	1,356	1,560	-15%
	Total	5,713	5,438	5%
Havant				
Waterlooville / Cowplain Area				
4110	Cowplain Community School	1,098	1,001	9%
4159	Crookhorn College of Technology	973	786	19%
5411	Oaklands Catholic Voluntary Aided Secondary School	1,458	1,269	13%
5414	Purbrook Park School	840	842	0%
	Total	4,369	3,898	11%
Havant / Hayling Area				
4316	Park Community School	900	890	1%
4317	Staunton Community Sports College	903	526	42%
4147	The Hayling College	744	631	15%
4318	Warblington School	977	665	32%
	Total	3,524	2,712	23%
New Forest				
Forest Area				
4129	Priestlands School	1,215	1,195	2%
5403	Ringwood School	1,510	1,594	-6%
5402	The Arnewood School	1,474	1,084	26%
5401	The Burgate School and Sixth Form Centre	1,007	979	3%
	Total	5,206	4,852	7%
Totton / Waterside Area				
5412	Applemore College	922	562	39%
5400	Hardley School and Sixth Form	1,057	864	18%

DCSF no.	School Name	Net Capacity	NOR	% surplus
4168	Hounslow School	1,215	1,210	0%
4128	Noadswood School	1,125	1,076	4%
5406	Testwood Sports College	1,219	945	22%
	Total	5,538	4,657	16%

Rushmoor

Aldershot / Farnborough Area

4203	Cove School	1,001	993	1%
4204	Fernhill School and Language College	945	907	4%
4207	Oak Farm Community School	693	230	67%
4312	The Connaught School	850	753	11%
4206	The Wavell School	870	865	1%
	Total	4,359	3,748	14%

Test Valley

Andover Area

4163	Harrow Way Community School	890	767	14%
4001	John Hanson Community School	980	955	3%
4184	Winton School	1,055	579	45%
	Total	2,925	2,301	21%

Romsey / Stockbridge Area

4015	The Mountbatten School	1,420	1,410	1%
4153	Test Valley School	780	777	0%
4143	The Romsey School	1,111	1,093	2%
	Total	3,311	3,280	1%

Winchester

Winchester / Alresford Area

4174	Henry Beaufort School	1,100	915	17%
4310	Kings' School	1,615	1,648	-2%
4130	Perins School – Community Sports College	1,061	1,008	5%
4012	The Westgate School	1,050	1,137	-8%
	Total	4,826	4,708	2%

DCSF no.	School Name	Net Capacity	NOR	% surplus
Bishops Waltham Area				
4149	Swanmore College of Technology	1,350	1,311	3%
	Total	1,350	1,311	3%
Total Secondary Schools		78,370	70,459	10%

Table 2**Numbers on Roll in Special Schools – January 2009**

DCSF No.	School Name	Age Range	Designation	Place number	Number on Roll
7032	Baycroft, Stubbington	11-16	MLD	182	181
7043	Dove House, Basingstoke	11-16	MLD	150	149
7017	Forest Edge, Totton ¹⁴	4-11	MLD	60	60
7072	Glenwood, Emsworth	11-16	MLD	101	93
7018	Heathfield, Fareham	2-11	MLD / PD	105	102
7000	Henry Tyndale, Farnborough	2-19	LD	107	110
7079	Hollywater, Bordon	2-19	LD	120	127
7020	Icknield, Andover	2-19	SLD	67	67
7014	Lakeside, Chandlers Ford	11-16 ®	BESD	77	74
5950	Osborne, Winchester	11-19 ®	LD	155	147
7026	Limington House, Basingstoke	2-19	SLD	75	80
7078	Lord Wilson, Sarisbury	11-16	BESD	49	53
7016	Maple Ridge, Basingstoke	4-11	MLD	67	67
7015	Norman Gate, Andover	2-11	MLD /EY	60	65
7070	Oak Lodge, Dibden Purlieu	11-16	MLD	130	140
7001	Prospect, Havant	11-16	BESD	42	45
7023	Rachel Madocks, Cowplain	2-19	SLD	65	69
7009	Riverside, Purbrook	3-11	MLD	104	103
7024	Salterns, Totton ¹⁴	2-19	SLD	45	46
7073	Samuel Cody, Farnborough	11-16	MLD	100	104
7053	Saxon Wood, Basingstoke	2-11	PD	35	35
7076	Shepherds Down, Compton	3-11	LD	113	106
7033	St Francis, Fareham	2-19	SLD	96	86
7075	The Mark Way, Andover	11-16	MLD	75	73
7051	The Waterloo, Waterlooville	4-11	BESD	46	46
7067	Wolverdene, Andover	4-11 ®	BESD	45	46

Key to designations

BESD	Behavioural, Emotional and Social Difficulties
EY	Early Years
LD	Learning Difficulties with complex needs
MLD	Moderate Learning Difficulties
PD	Physical Disability
®	Includes residential places
SLD	Severe Learning Difficulties

Numbers on Roll include Part Time pupils expressed as Full Time Equivalents

¹⁴ To amalgamate September 2009 as Forest Park School

Table 3

Numbers on roll in Resourced Provision for children with Special Educational Needs – January 2009

DCSF No.	School	Age Range	Designation	Place Number	Number on Roll
4156	Aldworth Science College,	11-16	PD / HI	11	8
5412	Applemore College, Dibden Purlieu	11-16	SpLD	17	17
2005	Ashley Infant, New Milton	3-7	SLD	16	14
5208	Ashley Junior, New Milton	7-11	LD	10	12
2776	Bedenham Primary, Gosport	7-11	BESD	7	8
2330	Calmore Infant, Totton	4-7	LI	0	0
5203	Calmore Junior, Totton	7-11	LI	0	0
2062	Cherbourg Primary, Eastleigh	5-11	BESD	7	6
4203	Cove Secondary	11-16	HI	7	6
4110	Cowplain Community	11-16	SpLD	30	29
4191	Crestwood Community, Eastleigh	11-16	SpLD	18	22
4000	Eggar's, Alton	11-16	SpLD	18	16
4187	Fort Hill Community, Basingstoke	11-16	SpLD	18	16
2011	Great Binfields Primary	4-11	VI	6	3
2533	Guillemont Junior, Farnborough	7-11	SLCN	20	20
4174	Henry Beaufort, Winchester	11-16	HI	8	7
2237	Hiltingbury Infant, Chandlers Ford	4-11	SLCN	12	13
2777	Holbrook Primary, Gosport	4-11	SLCN	14	13
4310	Kings', Winchester	11-16	PD	19	17
2347	Kings Copse Primary, Hedge End	4-11	VI	3	2
2520	Manor Junior, Cove	4-11	HI	10	9
3101	Medstead C E Primary	4-11	TC	7	7
4139	Mill Chase, Bordon	11-16	MLD	10	9
2774	Morelands Primary, Purbrook	4-11	SLCN/NA	21	17
4308	Neville Lovett Community	11-16	HI	13	7
2137	New Milton Infant	3-5	SLCN	5	7
4128	Noadswood, Hythe	11-16	PD	5	5
4207	Oak Farm, Cove	11-16	SpLD	11	9
3216	Oak Meadow Primary, Fareham	4-7	NA	10	9
2731	Park View Infant, Basingstoke	4-7	HI	5	8
2732	Park View Junior, Basingstoke	7-11	HI	5	3
2534	Pinewood Infant, Farnborough	4-11	SLCN	15	17
4133	Portchester Community	11-16	PD	16	14
3132	Ringwood Infant	3-5	SLCN	5	6
4511	Robert May's, Odiham	11-16	Asp	12	12
3665	St Mark's CE Primary, Basingstoke	5-11	BESD	7	6
2377	Shakespeare Junior, Eastleigh	7-11	MLD	10	11
2531	South Farnborough Junior	7-11	LD	20	19
2228	South View Infant, Basingstoke	4-7	SLCN	18	19
2013	South View Junior, Basingstoke	7-11	SLCN	16	17
2018	Stoke Park Infant, Bishopstoke	4-11	SLCN	13	8
4143	The Romsey Secondary	11-16	ASD	12	12
4113	The Toynbee, Chandlers Ford	11-16	VI	17	18
4180	The Vyne Community, Basingstoke	11-16	SLCN	10	11
4012	The Westgate, Winchester ¹⁵	11-16	TC	0	0
2111	Tiptoe Primary	7-11	SLD	8	7
2103	Trosnant Junior, Havant	7-11	BESD	10	8
2220	Vigo Infant, Andover	4-7	SLCN	7	7

DCSF No.	School	Age Range	Designation	Place Number	Number on Roll
2219	Vigo Junior, Andover	7-11	SLCN	7	5
2067	Wallisdean Junior, Fareham	4-11	HI	7	10
2057	Wildground Infant, Dibden Purlieu	3-5	SLCN	5	11
2613	Woodcot Primary, Gosport ¹⁵	4-11	TC	4	2

Numbers on Roll include part time pupils expressed as full time equivalents

Key to designations

Asp	Aspergers Syndrome
BESD	Behaviour, Emotional and Social Difficulties
HI	Hearing Impairment
LD	Learning Difficulties
LI	Language Impairment
NA	Nurture / Assessment
PD	Physical Disabilities
SLCN	Speech, Language and Communication Needs
SLD	Severe Learning Difficulties
SpLD	Specific Learning Difficulties
TC	Total Communication / Signing
VI	Visual Impairment

¹⁵ Resourced provision to close August 2009

Table 4

Pupils in sixth forms in Hampshire mainstream schools

	No. on roll – January 2009
Arnewood, New Milton	152
Bay House, Gosport	384
Burgate, Fordingbridge	254
Hardley	89
Oaklands, Waterlooville	157
Ringwood	308
Yateley	295
Total	1538

Table 5

Long term pupil number trends

	School Year						
	2002/03	2003/04	2004/05	2005/06	2006/07	2007/08	2008/09
Age 4	13,783	13,890	13,154	13,080	12,732	13,271	13,590
Age 5	14,139	13,877	13,966	13,286	13,194	12,809	13,275
Age 6	14,048	14,178	13,893	14,008	13,350	13,197	12,860
Age 7	14,128	14,010	14,109	13,906	13,991	13,239	13,077
Age 8	14,549	14,117	14,011	14,144	13,934	13,948	13,251
Age 9	14,557	14,514	14,073	14,058	14,174	13,923	13,962
Age 10	14,922	14,470	14,510	14,172	14,103	14,203	13,955
Total primary	100,126	99,056	97,716	96,654	95,478	94,590	93,970
Age 11	14,434	14,258	13,991	14,042	13,674	13,536	13,647
Age 12	14,437	14,346	14,274	14,049	14,045	13,713	13,595
Age 13	14,258	14,401	14,304	14,310	14,082	14,063	13,692
Age 14	14,099	14,176	14,399	14,362	14,303	14,003	14,073
Age 15	13,761	13,853	14,032	14,236	14,193	14,164	13,886
Total secondary	70,989	71,034	71,000	70,999	70,297	69,479	68,893

These numbers include pupils in special units, but not pupils in special schools.

Forecasts for School Year						
	2009/10	2010/11	2011/12	2012/13	2013/14	2014/15
Age 4	13,534	13,621	13,914	14,278	14,252	14,370
Age 5	13,637	13,581	13,668	13,961	14,325	14,299
Age 6	13,312	13,674	13,618	13,705	13,998	14,362
Age 7	12,760	13,212	13,574	13,518	13,605	13,898
Age 8	13,073	12,756	13,208	13,570	13,514	13,601
Age 9	13,259	13,081	12,764	13,216	13,578	13,522
Age 10	13,995	13,292	13,114	12,797	13,249	13,611
Total Primary	93,570	93,217	93,860	95,045	96,521	97,663
Age 11	13,405	13,445	12,742	12,564	12,247	12,699
Age 12	13,690	13,448	13,488	12,785	12,607	12,290
Age 13	13,596	13,691	13,449	13,489	12,786	12,608
Age 14	13,669	13,573	13,668	13,426	13,466	12,763
Age 15	13,940	13,536	13,440	13,535	13,293	13,333
Total Secondary	68,300	67,693	66,787	65,799	64,399	63,693

Table 6

Numbers on roll in County Council Maintained Nursery Schools and Units – January 2009

DCSF Number	School	Number on Roll –
1004	Bushy Leaze Early Years Centre, Alton	26
2522	Farnborough Grange Nursery/Infant and Early Years	31
1001	Haven Children's Centre, Gosport	69
2725	Kings Furlong Infant, Basingstoke	30
2301	Knights Enham Infant, Andover	30
1005	Lanterns Children's Centre, Winchester	45
2731	Park View Infant, Basingstoke	19
2530	Parsonage Farm Infant, Cove	30
2622	Peel Common Infant, Gosport	27
3668	Romsey Primary	22
2102	Sharps Copse Infant, Havant	13
2623	Siskin Infant, Gosport	20
2228	South View Infant, Basingstoke	19
2204	Weyford Infant, Bordon	26
	Total	407

Numbers on Roll are expressed as Full Time Equivalents.

Table 7

Pupils attending Education Centres – January 2009

DCSF No.	Name	On Centre register only
1104	Andover Education Centre	23
1115	Forest Education Centre, Dibden	15
1119	Grangeside, Basingstoke	61
1103	Linden Education Centre, Farnborough	46
1118	Quayside Education Centre, Gosport	38
1144	The Ashwood Centre, Basingstoke	39
1105	The Bridge Education Centre, Eastleigh	26
1108	Woodlands Education Centre, Cowplain	37
	Total	285