

# **Hampshire Child Poverty Needs Assessment 2011/12**

## Contents

Introduction	3
What is child poverty?	4
Why tackling child poverty matters	5
National context and legislation	6
Local context	7
Child poverty in Hampshire: key findings	13
Child poverty in Hampshire: needs assessment in detail	17
1. Financial support	17
2. Employment and skills	23
3. Life chances	32
Hampshire child poverty ranking	44
Next steps	45
Glossary	48
Appendix 1: Methodology for the Hampshire child poverty ranking	50
Appendix 2: Hampshire child poverty ranking in full	53

## Introduction

The Child Poverty Needs Assessment provides an overview of the nature of child poverty in Hampshire. Through the development of a shared understanding and focus, this document is intended to be a key driver in addressing child poverty in the county.

Poverty blights the daily lives of many children, families and communities and touches everyone in society. Various research has demonstrated that prolonged periods of poverty have long lasting detrimental effects on children into their adult life. To support a shared response to these issues, the Child Poverty Act 2010 requires local authorities to undertake a needs assessment and develop a strategy to address child poverty in their area.

This assessment is a snapshot of the current picture, designed to evolve as further information becomes available. It is fully aligned to the Joint Strategic Needs Assessment ([www.hants.gov.uk/jsna](http://www.hants.gov.uk/jsna)) and Hampshire Economic Assessment ([www.hants.gov.uk/economicassessment](http://www.hants.gov.uk/economicassessment)), which provide further information on the health and well-being of the Hampshire population and the local economic conditions. The data within the needs assessment mostly takes account of the economic downturn of 2008, but not the effects of the more recent dip.

The findings of this needs assessment will be used to inform decision making and priorities through the Children and Young People's Plan (CYPP). The CYPP is the overarching strategic plan for Hampshire's Children's Trust ([www.hants.gov.uk/childrens-trust](http://www.hants.gov.uk/childrens-trust)), capturing a shared commitment to improving outcomes for children and young people in the county. A new CYPP is being developed for 2012-15; and this will encompass Hampshire's child poverty strategy. A Joint Health and Well-being Strategy and Hampshire Economic strategy are also being developed and will be intrinsically linked to the CYPP, capturing shared activities to reduce poverty for children and families. For the County Council, actions will also be embedded within the *Open for Business* Plan.

## What is child poverty?

Child poverty is complex and its effects can be long lasting and hard to escape. At the root of child poverty are low levels of family income and specific hurdles to overcome, such as finding work that pays; flexible affordable childcare; and being able to support children to thrive and achieve.

Poverty is a multi-faceted issue that needs to be tackled through a multi-agency approach. It is a community wide problem, affected by, and contributing to, a range of areas such as employment and skills; health; housing; financial inclusion; and education.

In 2003, the Department for Work and Pensions established a tiered approach to defining and measuring child poverty in the UK. The three tiers are described below:

- **Children experiencing relative low income** - this measures whether the poorest families are keeping pace with the growth in incomes in the economy as a whole. The indicator measures the number of children living in households below 60% of contemporary median equivalised household income.
- **Children experiencing material deprivation and relative low income combined** - this indicator provides a wider measure of people's living standards. It measures the number of children living in households that are both materially deprived **and** have an income below 70% of contemporary median equivalised household income.
- **Children experiencing absolute low income** - this indicator measures whether the poorest families are seeing their income rise in real terms from a baseline year of 1998-99.

Relative low income is the most commonly used indicator for measuring poverty. Currently 2.9 million children live in relative poverty in the UK, one of the highest figures in Europe<sup>1</sup>. In real terms this is £288 per week for a couple with two dependent children under 14 (after housing costs) i.e. what the household has available to spend on everything else it needs, from food and heating to travel; entertainment; school uniforms; and clothing<sup>2</sup>.

National studies show that some of the following groups can be at particular risk of living in poverty:

- lone parent families;
- large families, with four or more children;
- children living with disabled adults, or adults with mental health problems;
- children with disabilities;
- teenage parents;
- children growing up in social housing;
- Black and minority ethnic children; and
- Gypsy and Traveller children.

---

<sup>1</sup> 'Measuring Child Poverty', Department for Work and Pensions, December 2003

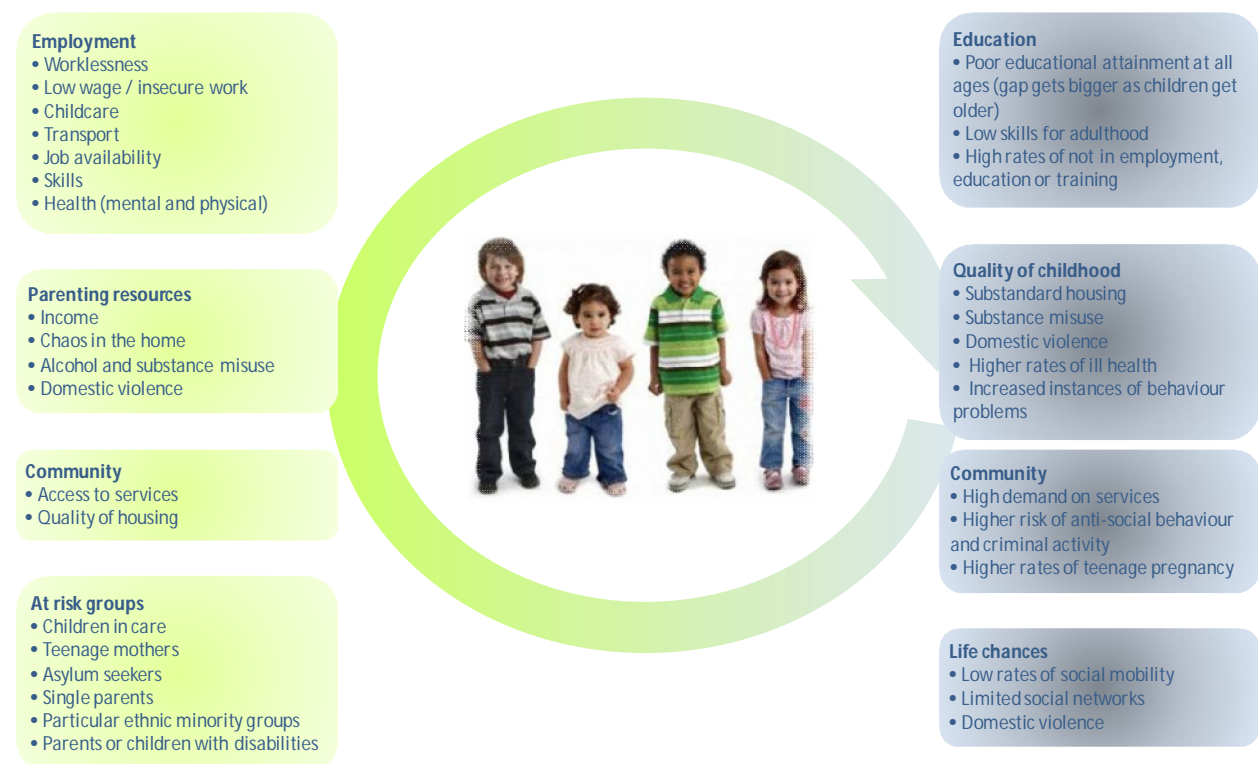
<sup>2</sup> Households Below Average Income - household income data 2008/09

## Why tackling child poverty matters

There is clear evidence that poverty damages childhoods and leads to poorer health and well-being; educational attainment (including low skills); and low aspirations. Only “35.5% of children eligible for free school meals receive five good GCSEs, compared to 62.8% of all children” (*Ending Child Poverty: Everybody’s Business*, HM Treasury 2008). Children who grow up in poverty lack many of the positive experiences and opportunities that others take for granted. They can be exposed to relentless hardship and social exclusion, which in turn, leads to inequalities.

The costs of child poverty to the national economy are significant, “as much as £25 billion per year” (*Ending Child Poverty: Everybody’s Business*, HM Treasury 2008). Poorer outcomes for children and families place extra burdens and costs on public services, such as healthcare and children’s services. Communities are affected through increased deprivation and inequalities, which can reduce social cohesion. Figure 1 illustrates the wide ranging key causes and consequences of child poverty.

**Figure 1: the causes and consequences of child poverty (Child Poverty Unit, 2009)**



## National context and legislation

Eradicating child poverty has been a Government target for many years. In the paper *'Ending Child Poverty: Everybody's Business'* (HM Treasury, March 2008), the national approach to reducing poverty was identified as incorporating four broad themes:

- a. **Increasing employment and raising incomes** – helping those who can work to move into employment and progress in work (e.g. flexible working, childcare, improving skill levels).
- b. **Financial and material support** – providing additional resources to ensure that being in work 'pays' and support those families who are unable to work (e.g. tax and benefits system).
- c. **Tackling deprivation in communities** – ensuring that communities are safe, sustainable places where families can thrive.
- d. **Improving poor children's life chances** – improving outcomes for children and young people and reducing inequalities.

The Child Poverty Act 2010, sets out how the Government intends to prioritise action across all areas and levels of government. The resulting national strategy identifies the following four targets for achievement by 2020:

- to reduce the proportion of children who live in relative low income households to less than 10%;
- to reduce the proportion of families who live in material deprivation **and** have low income to less than 10%;
- to reduce the proportion of children that experience long periods living in poverty; and
- to reduce the proportion of children who live in absolute low income households to less than 5%.

Under the Child Poverty Act, local authorities and key partners have a duty to co-operate in order to reduce and mitigate the effects of child poverty in their area. This includes publishing a child poverty needs assessment and using this to inform a joint strategy.

## Local context

This section provides a summary of the local context, as detailed further in the Joint Strategic Needs Assessment ([www.hants.gov.uk/jsna](http://www.hants.gov.uk/jsna)).

Hampshire County Council is the third largest county in the country (based on population), with 11 district councils and 251 parish councils, covering 367,896 hectares.

### Population

The current population estimate is 1.3 million people, approximately 307,000 of whom are children and young people aged 0-19. The ratio of under 19s generally reflects the national average, but with a slightly smaller proportion of 0-4 year olds. The proportion of young people is projected to decline marginally in future, with those aged under 20 accounting for approximately 22% of the population by 2033, compared to almost 24% currently.

There are over 167,000 pupils in 531 maintained schools. Post-16 education is provided by 15 further education colleges/sixth form colleges and six sixth form schools. There are 81 Sure Start Children's Centres in the county, providing a range of different services for families with children under five. The management of some centres is currently being merged to create 54 management units, operating through 15 clusters. Services will continue to be provided across all existing centre buildings, with a universal service offer reaching across the whole county (including through two innovative mobile children's centre buses).

### Population density

The county is a mix of urban and rural populations, with areas of affluence and areas of significant deprivation. The majority of Hampshire is classified as rural (85%), however only 23% of the population live in rural areas. 77% of the population live in the 15% of the county that is categorised as urban (that is an urban population of close to one million). Hampshire has a lower population density than the national average, with 3.5 people per hectare, compared to 4.4 people per hectare for the South East of England and 4.0 nationally. Gosport, Rushmoor and Havant are the most densely populated districts.

### Ethnicity

Hampshire has a predominantly white ethnic population. In 2007, 95.6% of the population was estimated to be of a white ethnic group, higher than the South East average. However, this has reduced since the 2001 census, when the white ethnic group stood at 97.8% of the population. Variation across the county is relatively small, from a non-white population of 6.7% in Rushmoor (up from 4.4% in 2001, considered to be due to a growing Nepalese population), to 3.3% in the New Forest. 92.9% of school pupils' ethnicity is recorded as white, the majority of which are white British. There is a relatively small, but notable Gypsy/Roma or Traveller of Irish heritage population, constituting 0.2% of all pupils. A total of 4% of pupils' first language is other than English, but this reflects 124 different languages spoken in the county's schools.

## Migration

Migration can have an impact on population change, with even relatively small numbers impacting on the level of need for public services in an area. Migration can be internal (within a country) and international. Migration is difficult to measure accurately, since there are no routinely collected datasets for measuring the movement of people. However, figures suggest that most migration into and out of Hampshire is internal. Estimates from the Office for National Statistics in 2009, showed that only 9.8% of the 54,300 people who migrated into Hampshire were from overseas. Similarly, just 11.3% of the 51,100 who left Hampshire were estimated to have moved overseas. A home movers survey, carried out by Hampshire County Council in 2008/09, questioned a sample of people, finding that over half of all moves were within the same district; and a further 19% within the county boundary.

## Household classification

Consumer data can be used to provide an insight into the characteristics of households. The Mosaic Public Sector Classification groups households into one of 15 categories, based on 400 different sources of data, including the Electoral Roll, Council Tax property valuations, house sale prices, lifestyle surveys and consumer data.

The most recent data (2009), reinforces the general picture of Hampshire as an affluent county. The majority of households are classified as 'successful professionals living in suburban or semi-rural homes'. Furthermore, with the exception of Gosport, the majority of households in all districts fall within one of the following categories:

- 'successful professionals living in suburban or semi-rural homes';
- 'residents of small and mid-sized towns with strong local roots';
- 'middle income families living in modern suburban semis'.

Despite this general commonality among districts, the New Forest, Havant and Gosport do evidence characteristics that are different from the rest of the county:

- the rural setting of the New Forest has a significantly above average proportion of prosperous pensioners;
- Havant has a high number of council houses and blue collar workers;
- Gosport appears to be the least affluent, with a high proportion of households living in ex-industrial areas.

The highest proportions of 'families in social housing, with high levels of benefit need' are in Gosport, Havant and Rushmoor.

The full results are shown in figure 2, below:

**Figure 2: Household classification (Experian – Mosaic 2009)**

Household type	Percentage of households in each district											
	Hampshire	Basingstoke	East Hants	Eastleigh	Fareham	Gosport	Hart	Havant	New Forest	Rushmoor	Test Valley	Winchester
Residents of isolated rural communities	4.5	4.4	7.9	0.5	0.4	0.0	2.5	0.4	9.9	0.0	8.9	10.1
Residents of small and mid-sized towns, with strong local roots	11.4	5.6	10.7	11.7	15.0	7.5	3.9	20.0	22.6	3.1	9.7	7.2
Wealthy people living in the most sought after neighbourhoods	2.8	1.6	5.2	1.2	1.1	0.5	8.2	0.4	0.9	1.0	2.6	8.6
Successful professionals living in suburban or semi-rural homes	17.6	17.1	28.3	14.5	19.2	4.9	27.1	12.6	15.8	6.0	20.2	23.2
Middle income families living in moderate suburban semis	12.3	9.4	10.7	18.0	17.7	11.0	15.8	10.3	8.3	23.8	11.2	4.7
Couples with young children in comfortable modern housing	11.4	14.7	10.1	12.6	13.8	5.9	24.2	2.1	3.9	14.3	13.4	13.3
Young, well-educated city dwellers	2.0	3.0	1.0	0.3	0.5	3.2	2.5	0.8	0.3	3.7	0.7	8.2
Couples and young singles in small, modern starter homes	8.0	14.1	6.0	12.8	5.6	10.0	5.3	4.4	5.0	18.5	4.7	3.9
Lower income workers in urban terraces, often in diverse areas	1.8	3.5	0.4	1.5	0.8	7.8	0.3	1.6	0.6	2.5	1.3	0.7
Owner occupiers in older-style housing in ex-industrial areas	6.4	6.6	4.7	8.2	6.6	16.6	1.6	7.2	5.4	7.3	8.2	1.5
Residents with sufficient incomes in right-to-buy social housing	7.8	12.0	6.2	6.3	5.1	10.3	2.4	16.7	5.5	8.4	6.9	6.4
Active elderly people living in pleasant retirement locations	6.4	2.3	3.7	4.3	8.6	6.1	3.7	8.5	16.0	2.1	5.0	5.0

Household type	Percentage of households in each district											
	Hampshire	Basingstoke	East Hants	Eastleigh	Fareham	Gosport	Hart	Havant	New Forest	Rushmoor	Test Valley	Winchester
Elderly people reliant on state support	4.6	3.3	4.6	5.9	4.3	7.4	2.4	4.6	3.9	5.3	4.9	5.7
Young people renting flats in high density social housing	1.2	0.7	0.1	0.6	1.0	3.7	0.0	4.9	0.6	0.9	0.7	1.0
Families in low-rise social housing with high levels of benefit need	1.8	1.7	0.4	1.6	0.4	5.0	0.2	5.4	1.1	3.1	1.5	0.6

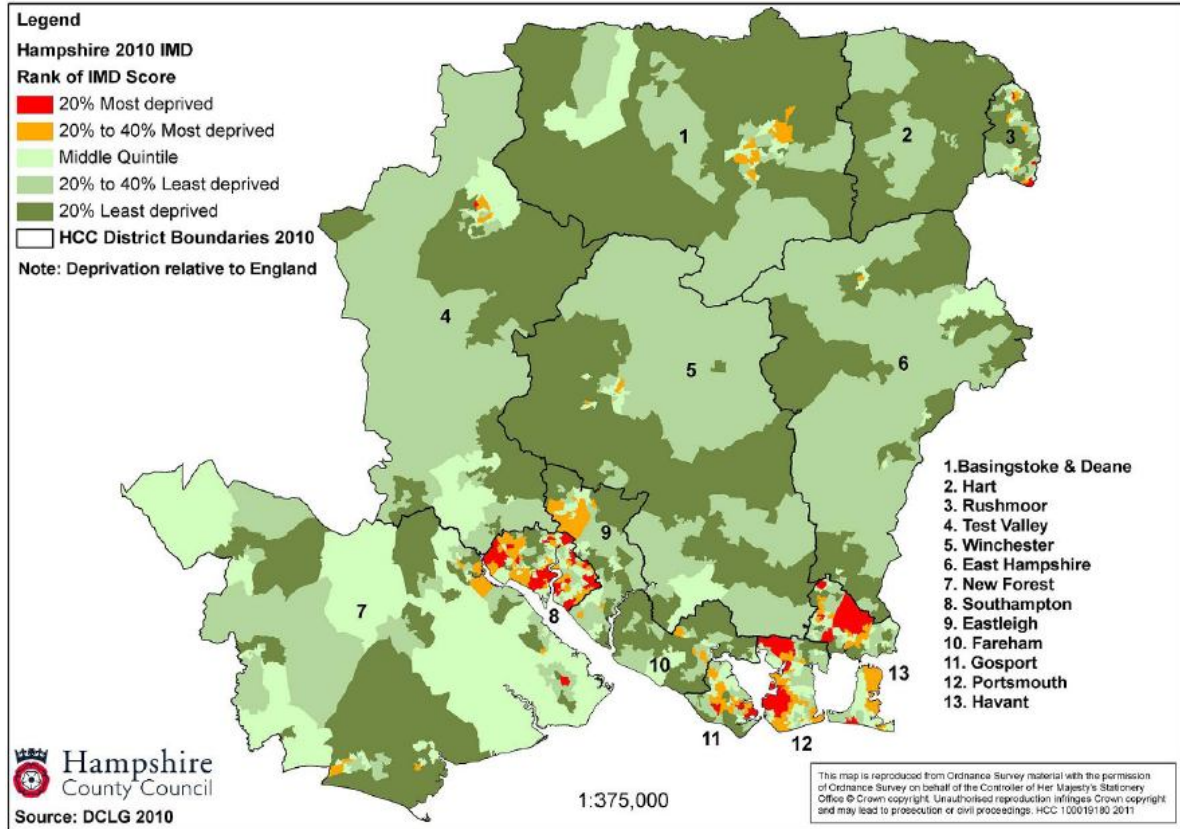
Source: Experian (Mosaic 2009)

## Deprivation

The Index of Multiple Deprivation (IMD) highlights areas of disadvantage, by considering local levels of: income; employment; health and disability; education, skills and training; barriers to housing and services; crime; and living environment. Average results from across England are compared, forming a 'ranking' of Lower Super Output Areas (LSOA - geographical units smaller than a Ward). The average of LSOA rankings are used to determine a rank for each district area. Three IMD ranks have been produced over recent years, in 2004, 2007 and 2010.

The IMD historically shows Hampshire as one of the least deprived areas in the country, with Hart consistently being the least deprived district in England. However, this analysis masks some underlying pockets of deprivation, including within Test Valley and the New Forest. Figure 3 illustrates deprivation across Hampshire in 2010, highlighting the highest levels of multiple deprivation in pink and orange.

**Figure 3: Index of Multiple Deprivation 2010**



3.8% of Hampshire's LSOAs are within the most deprived 20% in the country (31 LSOAs), as shown in figure 4. In 2010, 22 of the 31 LSOAs in the 'most deprived' category were in Havant. Of these 22, 16 have consistently been included in this category, particularly those covering the Leigh Park area.

**Figure 4: Hampshire LSOAs in the 20% most deprived nationally (2010)**

LSOA code	District	Ward	IMD score	Rank of IMD score (where 1 is most deprived in England)
E01022967	Havant	Warren Park (Leigh Park)	55.46	1341
E01022905	Havant	Battins (Leigh Park)	53.62	1604
E01022903	Havant	Battins (Leigh Park)	53.58	1608
E01022933	Havant	Hart Plain (Wecock)	52.14	1833
E01022915	Havant	Bondfields (Leigh Park)	49.13	2359
E01023126	Rushmoor	North Town (Aldershot)	48.61	2456
E01022934	Havant	Hart Plain (Wecock)	47.91	2593
E01022917	Havant	Bondfields (Leigh Park)	47.65	2641
E01022843	Gosport	Town (Gosport centre)	46.59	2856

LSOA code	District	Ward	IMD score	Rank of IMD score (where 1 is most deprived in England)
E01022966	Havant	Warren Park (Leigh Park)	43.65	3532
E01022970	Havant	Warren Park (Leigh Park)	43.56	3564
E01022968	Havant	Warren Park (Leigh Park)	43.45	3588
E01022844	Gosport	Town (Gosport centre)	43.14	3665
E01022902	Havant	Barncroft (Leigh Park)	42.84	3745
E01022822	Gosport	Grange	42.51	3830
E01022913	Havant	Bondfields (Leigh Park)	42.47	3840
E01022906	Havant	Battins (Leigh Park)	42.35	3875
E01022900	Havant	Barncroft (Leigh Park)	42.34	3878
E01022914	Havant	Bondfields (Leigh Park)	39.78	4630
E01022942	Havant	Hayling West	39.57	4686
E01022949*	Havant	Purbrook	39.40	4744
E01023108	Rushmoor	Heron Wood (Aldershot)	39.34	4768
E01022901	Havant	Barncroft (Leigh Park)	38.95	4886
E01023029	New Forest	Holbury and North Blackfield	37.93	5199
E01023156*	Test Valley	Alamein (Andover)	37.29	5419
E01022833	Gosport	Leesland	37.13	5476
E01022965*	Havant	Stakes	36.80	5582
E01022969	Havant	Warren Park (Leigh Park)	36.72	5610
E01022899*	Havant	Barncroft (Leigh Park)	35.54	6025
E01022904*	Havant	Battins (Leigh Park)	35.23	6138
E01023119	Rushmoor	Mayfield (Farnborough)	34.20	6482

Source: Department for Communities and Local Government, 2010 (\* new for 2010)

## Child poverty in Hampshire: key findings

The picture of child poverty in Hampshire is mixed, with large areas of affluence masking some underlying areas of significant deprivation.

The greatest levels of poverty are generally found in parts of the New Forest and Havant, corresponding with levels of high deprivation and unemployment; and low attainment and poorer outcomes for some groups of children and young people. However, pockets of child poverty can be found across Hampshire, even in the more affluent districts.

### Financial support

#### Work incentives (pages 17-20):

- Take up of the childcare element of Working Tax Credit is lowest in Havant and parts of Rushmoor, Gosport, Test Valley and the New Forest.
- The Bondfields, Barncroft and Warren Park wards in Havant have the lowest level of take up combined with high levels of deprivation.
- There are 156 Lower Super Output Areas (LSOAs) where take up of the childcare element of Working Tax Credit is lower than the Hampshire average **and** the percentage of children living in low income/out of work households is higher than the county average.
- The 20 LSOAs with the lowest level of take up, with a high proportion of low income/out of work households are spread across nine of the 11 Hampshire districts, with the greatest number in the New Forest.

#### Benefits (pages 20-21):

- Claims for Housing Benefit and Council Tax Benefit are generally processed more quickly than the England average, with the exception of Basingstoke and Deane.

#### Insolvency (pages 21-22):

- The highest rates of personal insolvency are found in Gosport, with the lowest rates in Hart and Test Valley.
- Insolvency rates have increased since the start of the recession – increases in seven of Hampshire's 11 districts were greater than that seen nationally.
- The largest increases in insolvency rates between 2007 and 2009 were in Fareham, Gosport and Test Valley.

### Employment and skills

#### Employment (pages 23-27):

- Unemployment is generally concentrated in Rushmoor, Gosport, Havant and the centres of Eastleigh and Basingstoke.
- There were 16,339 claimants of Job Seekers Allowance in Hampshire in November 2011 – approximately 32% had been claiming it for over six months and 13% for more than 12 months.

- 57,780 Hampshire residents were claiming the main 'out-of-work' benefits in November 2011, the highest proportion being in Basingstoke, Gosport, Havant, the New Forest and Rushmoor.
- The highest rates of long term unemployment are in Basingstoke, Eastleigh, Gosport, Havant and Rushmoor.
- Jobs density is lowest in Gosport and Havant, where the number of jobs is equivalent to only around 50% and 63% of the working age population.
- There appears to be some discrepancy between the skills and experience of those seeking employment and the nature of available job opportunities. The most notified vacancy in November 2011 was for care assistants and home carers (JobCentre Plus), while the most sought occupation was sales and retail assistants.

#### Low income (pages 27-30):

- The proportion of children living in households in receipt of out of work benefits, or where income is less than 60% of the national median average, varies significantly across Hampshire.
  - Although the average for the county is 12.2% (2008/09), in some wards it reaches 40-50%;
  - Every district has a ward where over 10% of children live in low income/out of work households;
  - 269 LSOAs (32.7% of the total) have levels higher than the Hampshire average;
  - The worst affected LSOAs are clustered in Havant, Gosport and the New Forest.
- Average gross weekly earnings in Hampshire were £500.90 in 2008/09, although it masks significant variation across districts.
- The lowest incomes are in East Hampshire, Gosport, Eastleigh, Havant, the New Forest and Test Valley.

#### Adult skill levels (page 30-31):

- Havant has the highest proportion of working age adults with no qualifications (11.2%), followed by the New Forest (10.8%), Eastleigh (10.7%) and Basingstoke (10.3%).

### Life chances

#### Housing (pages 32-33):

- The highest proportion of households registering a housing need are in Gosport (8.7%) and Eastleigh (9.3%).
- The greatest proportion of households in temporary accommodation are in Gosport (5.2 per 1,000) and the New Forest (2.2 per 1,000).

#### Household composition (pages 33-34):

- 16% of households with dependent children in Hampshire are lone parent households.

- 8,900 children live in lone parent families in receipt of income benefits, the highest numbers in Basingstoke, Gosport, Havant and the New Forest.
- 73% of the children living in households in receipt of out of work benefits, or where income is less than 60% of the median national average, are in lone parent families. The LSOAs with the greatest proportions are in Gosport, Havant, Eastleigh, the New Forest and Test Valley.

#### Health (pages 35-38):

- The highest rate of infant deaths are in Gosport (5.9 per 1,000 live births), the New Forest (4.81 per 1,000) and Test Valley (4.46 per 1,000).
- The greatest prevalence of overweight and obese children are in Basingstoke, Gosport, Havant and Rushmoor.
- The highest proportion of underweight children are in Basingstoke, Gosport and Rushmoor.
- Dental health among 12 year olds is poorest in Eastleigh, Gosport, Havant, the New Forest and Rushmoor.
- Teenage conceptions per 1,000 of 15-17 year old women are highest in Gosport (52.3 per 1,000) and Havant (41.7 per 1,000) – both higher than the England average.
- The largest increases in teenage conceptions between 1998-00 and 2007-09 were in Eastleigh (+21.5%) and Test Valley (+11.4%).
- The highest rates of hospital admissions caused by unintentional and deliberate injuries to children are in Gosport (143.8 per 10,000 population), Havant (138.4 per 10,000) and the New Forest (131.3 per 10,000).
- Crime rates are generally higher in Hampshire's urban areas, particularly Gosport and Havant.

#### Education (pages 39-42):

- The gap between the lowest achieving 20% at Early Years Foundation Stage and their peers is greatest in Basingstoke (33.8%), East Hampshire (34.4%), Havant (34.5%), the New Forest (31.8%), Rushmoor (35.5%), Test Valley (32.0%) and Winchester (32.8%) – all higher than the England average.
- The gap between pupils eligible for free school meals and their peers at Key Stage 2 is greatest in the New Forest (29.5%), although eight districts have a larger gap than the England average.
- At GCSE level, the gap between pupils eligible for free school meals and their peers is greatest in Eastleigh (39.0%), however a total of eight districts have a larger gap than the England average.
- The gap between Special Educational Needs pupils and their peers at GCSE is wider than the England average in all districts, with the exception of Basingstoke. The greatest gap is in Eastleigh (63.5%).
- The lowest achieving ethnic groups at GCSE in 2009/10 were Gypsy, Roma and Traveller; Black Caribbean; any other Black background; Irish; Bangladeshi; and other Asian background.
- Attainment of Black and minority ethnic groups at GCSE level is below the county average in Basingstoke, Gosport, Rushmoor, East Hampshire and the New Forest.

**Post-16 education, training and employment (pages 42-43):**

- The highest proportions of Year 12-13 students not in education, employment or training in November 2011 were in Rushmoor (9.5%), followed by Havant (8.3%).

**Hampshire child poverty ranking (page 44):**

- Taking into consideration a range of poverty measures, covering both incidence and impact, the greatest levels of child poverty in Hampshire can be found in the New Forest and Havant.

## Child poverty in Hampshire: needs assessment in detail

The data and information within this needs assessment is grouped into the following three key blocks, reflecting the impact of poverty on children and families:

1. financial support;
2. employment and skills;
3. life chances.

The needs assessment considers a wide range of information on the nature of poverty locally, including demographics, impact and gaps in outcomes. The aim is to build a shared understanding of child poverty within Hampshire, which can inform decisions and priorities.

### 1. Financial support

Financial support, inclusion and debt have a significant impact on family poverty. This section of the needs assessment explores take up of benefits and work incentives for families; and also levels of insolvency.

#### Work incentives

The childcare element of the Working Tax Credit provides help with the cost of registered childcare for working parents. It offers up to 70% towards the costs of childcare up to a maximum of £175 per week for one child and £300 per week for two or more children. The actual amount received depends on income and childcare costs. Lone parents or couples each working 16 hours or more per week are eligible. The aim of this credit is to improve work incentives by allowing parents, particularly lone parents, to move into work. There are also potential effects on child development outcomes which may result from children participating in formal childcare.

Take up of the childcare element of Working Tax Credit by low income families in Hampshire is slightly lower than the England average, at 16.5% in 2009 compared to a national figure of 17.4%. A total of 7,100 low income families in the county accessed this benefit in 2009. The percentage take up appears low, due to a high proportion of families being ineligible for this element of the tax credit, because they are single-earner couples, because they do not use any childcare, or because they use unregistered childcare such as family and friends.

The percentage of eligible families in each district claiming the childcare element of Working Tax Credit is shown in figure 5, below.

**Figure 5: District level take up of the childcare element of working tax credit by low income families (2009)**

	Percentage of eligible families claiming credit	No. of families claiming credit (rounded to nearest 100)
Basingstoke and Deane	19.0%	1,000
East Hampshire	13.5%	500
Eastleigh	16.8%	700

	Percentage of eligible families claiming credit	No. of families claiming credit (rounded to nearest 100)
Fareham	19.9%	700
Gosport	20.1%	800
Hart	18.4%	400
Havant	15.0%	700
New Forest	13.7%	800
Rushmoor	16.4%	600
Test Valley	15.0%	500
Winchester	14.8%	400
Hampshire	16.5%	7,100

Source: HMRC, 2011

The table below shows the Lower Super Output Areas (LSOAs) in the most 20% deprived areas in England (Index of Multiple Deprivation, 2010), where take up of the childcare element of Working Tax Credit is below the Hampshire average (16.5%, 2009). This indicates that activity to promote the credit, both to working and non-working parents, should be focused on Havant and parts of Rushmoor, Gosport, Test Valley and the New Forest.

**Figure 6: Lower Super Output Areas in the 20% most multiple deprived areas in England, with lower take up of the childcare element of working tax credit than the Hampshire average of 16.5% (2009)**

LSOA code	Ward	District	IMD score	Rank of IMD score (1 = most deprived)	Percentage of eligible families claiming credit
E01023108	Heron Wood	Rushmoor	39.34	4768	4.4%
E01022917	Bondfields	Havant	47.65	2641	7.0%
E01022913	Bondfields	Havant	42.47	3840	7.2%
E01022970	Warren Park	Havant	43.56	3564	8.2%
E01023156	Alamein	Test Valley	37.29	5419	8.4%
E01022965	Stakes	Havant	36.80	5582	10.0%
E01022906	Battins	Havant	42.35	3875	10.2%
E01022967	Warren Park	Havant	55.46	1341	10.3%
E01022900	Barncroft	Havant	42.34	3878	10.5%
E01022968	Warren Park	Havant	43.45	3588	10.6%
E01022902	Barncroft	Havant	42.84	3745	10.6%
E01022899	Barncroft	Havant	35.54	6025	11.1%
E01022905	Battins	Havant	53.62	1604	11.5%
E01022915	Bondfields	Havant	49.13	2359	11.9%
E01022914	Bondfields	Havant	39.78	4630	11.9%
E01022901	Barncroft	Havant	38.95	4886	12.6%

LSOA code	Ward	District	IMD score	Rank of IMD score (1 = most deprived)	Percentage of eligible families claiming credit
E01022933	Hart Plain	Havant	52.14	1833	13.1%
E01023029	Holbury and North Blackfield	New Forest	37.93	5199	14.2%
E01022966	Warren Park	Havant	43.65	3532	14.3%
E01022904	Battins	Havant	35.23	6138	14.3%
E01022843	Town	Gosport	46.59	2856	14.4%
E01022822	Grange	Gosport	42.51	3830	15.8%
E01022903	Battins	Havant	53.58	1608	16.2%
E01022969	Warren Park	Havant	36.72	5610	16.3%

Source: HMRC and Department for Communities and Local Government, 2011

Analysis of the take up of the childcare element of Working Tax Credit in areas with higher than average proportions of out of work or low income households, suggests a much wider spread of LSOAs where this benefit needs promoting. There are 156 LSOAs where take up of the childcare element is lower than the Hampshire average (16.5% in 2009) **and** the percentage of children living in low income/out of work households is higher than the county average (12.2% in 2009, see section on employment and skills for further details). The 20 LSOAs with the lowest level of take up are shown in the below table. This includes LSOAs from nine of the 11 Hampshire districts, demonstrating that pockets of low income and deprivation exist across the county.

**Figure 7: Areas with the lowest take up of the childcare element of Working Tax Credit, where the percentage of children living in households receiving out of work benefits, or with income of less than 60% of the median average, is higher than the Hampshire average (2009)**

LSOA code	Ward	District	Percentage of families claiming childcare element of WTC	Percentage of children living in out of work or low income households
E01023122	Mayfield	Rushmoor	0.0%	24.2%
E01022603	Headley	East Hampshire	0.0%	22.7%
E01023046	Lyndhurst	New Forest	0.0%	16.0%
E01023223	Bishops Waltham	Winchester	0.0%	13.7%
E01022989	Boldre & Sway	New Forest	0.0%	12.3%
E01023108	Heron Wood	Rushmoor	4.4%	23.9%
E01022635	Whitehill Deadwater	East Hampshire	5.3%	27.5%
E01022679	Eastleigh South	Eastleigh	6.0%	15.9%
E01022649	Bishopstoke West	Eastleigh	6.2%	23.6%
E01022803	Bridgemary South	Gosport	6.2%	23.1%
E01023157	Alamein	Test Valley	6.3%	28.8%
E01023055	Milton	New Forest	6.4%	37.0%

LSOA code	Ward	District	Percentage of families claiming childcare element of WTC	Percentage of children living in out of work or low income households
E01023221	Bishops Waltham	Winchester	6.5%	18.4%
E01023054	Milton	New Forest	6.5%	16.1%
E01023014	Fawley, Blackfield & Langley	New Forest	6.7%	12.8%
E01022520	Kingsclere	Basingstoke & Deane	6.8%	13.1%
E01023258	St John & All Saints	Winchester	6.9%	23.0%
E01022917	Bondfields	Havant	7.0%	35.5%
E01023006	Butts Ash & Dibden Purlieu	New Forest	7.1%	33.3%
E01023121	Mayfield	Rushmoor	7.1%	14.8%

Source: HMRC, 2011

There are two LSOAs that appear in both figure 6 and figure 7: E01023108, within the Heron Wood ward of Rushmoor; and E01022917, within the Bondfields ward of Havant.

## Benefits

Housing benefit and council tax benefit are available to low income individuals and families. Families can face a financial shortfall, or fall into rent arrears if their claims for benefit are not processed in a timely way. Figure 8 shows the average time taken to process claims for housing benefit and council tax benefit in Hampshire in 2010/11, compared to the England average. This evidences that the majority of districts process claims in shorter timescales than the national average, with the exception of Basingstoke and Deane.

**Figure 8: Average time taken to process claims for housing benefit and council tax benefit (both new claims and change of circumstance), in calendar days (2010/11)**

	Overall		Housing Benefit		Council Tax Benefit	
	New claims	Change of circumstances	New claims	Change of circumstances	New claims	Change of circumstances
Basingstoke & Deane	29	11	29	10	30	13
East Hants	16	6	16	6	16	7
Eastleigh	17	5	17	5	17	6
Fareham	20	-	19	-	21	-
Gosport	18	-	18	-	18	-
Hart	18	6	16	6	19	7
Havant	15	-	14	-	15	-
New Forest	20	-	19	-	20	-
Rushmoor	9	2	8	2	10	2

	Overall		Housing Benefit		Council Tax Benefit	
	New claims	Change of circumstances	New claims	Change of circumstances	New claims	Change of circumstances
Test Valley	18	-	18	-	18	-
Winchester	14	-	14	-	14	-
England average	22	10	22	9	23	11

Source: Department for Work and Pensions

## Insolvency

Figure 9 shows personal insolvency data for Bankruptcy Orders<sup>3</sup>, Individual Voluntary Arrangements<sup>4</sup> and Debt Relief Orders<sup>5</sup> expressed as rates per 10,000 adult population. The highest rates of bankruptcy and Individual Voluntary Arrangements were in Gosport, while the lowest rate of bankruptcy was in Hart and the lowest rate of Individual Voluntary Arrangements was in Test Valley. Comparison between the figures for 2007 and 2009 clearly shows an increase in insolvency, coinciding with the recession. It may be of concern that the levels of bankruptcy orders in seven of the 11 Hampshire districts increased at a higher rate than the national average in this two year period, with the greatest increases in Fareham, Gosport and Test Valley. This data suggests that financial education for families should be targeted at these districts.

**Figure 9: Personal insolvency data (2007 and 2009)**

	No. new bankruptcy orders (per 10,000 adult population)			No. new Individual Voluntary Arrangements (per 10,000 adult population)			No. new Debt Relief Orders (per 10,000 adult population)
	2007	2009	% change	2007	2009	% change	2009*
Basingstoke & Deane	14.5	17.5	+20.7%	13.2	12.7	-3.8%	0.6
East Hants	14.4	15.0	+4.2%	11.8	12.6	+6.8%	1.3
Eastleigh	13.9	18.2	+30.9%	10.5	12.0	+14.3%	1.6
Fareham	8.1	12.4	+53.1%	8.9	12.6	+41.6%	0.9
Gosport	15.7	23.6	+50.3%	21.1	17.8	-15.6%	2.9
Hart	8.8	9.0	+2.2%	11.8	11.1	-5.9%	1.7
Havant	19.7	19.5	-1.0%	13.1	15.0	+14.5%	3.0
New Forest	14.6	18.4	+26.0%	10.7	9.9	-7.5%	1.5

<sup>3</sup> A Bankruptcy Order is an order of the court, based upon a creditor's or debtor's petition which makes an individual bankrupt.

<sup>4</sup> An Individual Voluntary Agreement is an alternative to bankruptcy – a person can enter into an IVA and pay the maximum possible amount to the creditors to repay their debt.

<sup>5</sup> Debt Relief Orders apply to debtors who owe up to £15,000 of unsecured debt, who do not own property or have assets of £300 or less and who have a disposable income, after all essential costs, of £50 or less.

	No. new bankruptcy orders (per 10,000 adult population)			No. new Individual Voluntary Arrangements (per 10,000 adult population)			No. new Debt Relief Orders (per 10,000 adult population)
	2007	2009	% change	2007	2009	% change	2009*
Rushmoor	12.7	15.3	+20.5%	18.6	12.8	-31.2%	1.5
Test Valley	12.8	18.1	+41.4%	11.6	8.5	-26.7%	2.6
Winchester	13.0	14.4	+10.8%	9.8	8.9	-9.2%	1.2
England and Wales	15.2	17.3	+13.8%	9.9	11.0	+22.2%	2.7

Source: Insolvency Service, 2010 (\* data for Debt Relief Orders not collected before 2009)

## 2. Employment and skills

This section of the needs assessment looks at worklessness and promoting parental employment by addressing barriers to work, such as skills and experience; and lack of childcare and flexible working arrangements. It also includes 'in-work' poverty.

### Employment

Whilst a relatively wealthy county, Hampshire has not escaped the impacts of the economic downturn, evidenced by unemployment benefit claimants almost doubling since 2008.

The current number of unemployed benefit claimants in Hampshire is 16,339 (November 2011), representing 2.0% of the working age population. This is notably lower than the national unemployed figure, which was 4.8% for the same period. The number of claimants of Job Seekers Allowance in the county is now significantly lower than the peak in 2009, when numbers reached nearly 20,000. However, it also remains over 6,000 higher than that recorded prior to the economic downturn. The majority of claimants are male (approximately two thirds of all claimants). As shown in figure 10, unemployment is generally concentrated in Rushmoor, Gosport and Havant and in the centres of Eastleigh and Basingstoke.

Job Seekers Allowance is a narrow measure of worklessness, with the out-of-work measure used by the Government providing a more accurate reflection of exclusion from the labour market. As at November 2011, there were 57,780 people in the main out-of-work benefit group (Job Seekers Allowance, employment support allowance/incapacity benefit, lone parent benefits and other income related benefits). Most of these are on either incapacity benefit, or since October 2008, the replacement employment support allowance. Figure 10, shows that the percentage of the working age population claiming key out of work benefits is highest in Basingstoke, Gosport, Havant, the New Forest and Rushmoor.

**Figure 10: Key measures of unemployment and worklessness (2011)**

	Unemployed claimants (Jobseekers Allowance) Nov 2011		Key out of work benefits May 2011	
	Count	% of working age population	Count	% of working age population
Basingstoke & Deane	2,238	2.1	7,690	7.1
East Hants	1,065	1.5	3,910	5.6
Eastleigh	1,608	2.0	5,350	6.8
Fareham	1,210	1.7	4,020	5.8
Gosport	1,538	3.0	5,220	10.3
Hart	716	1.2	2,330	4.0
Havant	2,437	3.4	8,340	11.8
New Forest	1,802	1.7	7,450	7.2
Rushmoor	1,637	2.6	5,250	8.5
Test Valley	1,161	1.6	4,330	6.1

	Unemployed claimants (Jobseekers Allowance) Nov 2011		Key out of work benefits May 2011	
	Count	% of working age population	Count	% of working age population
Winchester	927	1.3	3,880	5.4
Hampshire	16,339	2.0	57,780	7.1
England	1,316,600	4.8%	4,777,970	14.1%

Source: NOMIS, 2011

The wards with the 20 highest rates of unemployed benefit claimants in November 2011 are listed in figure 11, below. Eight of Hampshire's 11 districts have a ward in this list, demonstrating that there are pockets of high unemployment across the county. Again, unemployment is shown as being concentrated in Havant, Gosport and Basingstoke.

**Figure 11: Wards with the 20 highest rates of unemployed benefit claimants (November 2011)**

Ward	District	Males		Females		Total	
		Claimant count	%	Claimant count	%	Claimant count	%
Warren Park	Havant	206	10.3	109	4.7	315	7.3
Fleet Pondtail	Hart	21	1.5	9	0.6	30	7.0
Battins	Havant	177	9.0	83	3.9	260	6.4
Barncroft	Havant	155	8.9	58	3.0	213	5.8
Bondfields	Havant	178	8.5	66	3.1	244	5.8
Town	Gosport	121	8.2	52	3.3	173	5.7
Grange	Gosport	134	7.1	68	3.4	202	5.2
Popley West	Basingstoke & Deane	100	6.5	39	2.3	139	4.3
Eastleigh South	Eastleigh	146	5.8	76	2.9	222	4.3
Mayfield	Rushmoor	123	5.7	66	2.9	189	4.3
Bridgemary South	Gosport	87	5.9	33	2.4	120	4.2
Leesland	Gosport	84	5.5	47	2.8	131	4.1
South Ham	Basingstoke & Deane	112	4.9	72	3.1	184	4.0
Christchurch	Gosport	88	0.0	35	2.3	123	4.0
Buckskin	Basingstoke & Deane	82	4.6	61	3.2	143	3.9
Rooksdown	Basingstoke & Deane	46	5.3	24	2.5	70	3.9
Heron Wood	Rushmoor	99	5.4	43	2.2	142	3.8
Alamein	Test Valley	119	4.8	74	2.8	193	3.8
Fareham South	Fareham	108	4.8	57	2.6	165	3.7
Eastrop	Basingstoke & Deane	90	4.7	43	2.5	133	3.6

Source: NOMIS, 2011

In November 2011, over five thousand Hampshire residents had been claiming unemployment benefit for more than six months, representing nearly 32% of all claimants. A total of 2,080 had been claiming for over 12 months – the equivalent of almost 13% of all claimants. The districts with the highest rates of long term unemployment are Basingstoke, Eastleigh, Gosport, Havant and Rushmoor. However, Fareham and Gosport also have higher proportions of claimants receiving unemployment benefit for more than 12 months than the Hampshire average. Data for all districts is shown in figure 12, below.

**Figure 12: Unemployment benefit claim duration (November 2011)**

	Claiming for over six months		Claiming for over 12 months	
	Count	% of all claimants	Count	% of all claimants
Basingstoke & Deane	765	34.2%	300	13.4%
East Hants	285	26.8%	110	10.3%
Eastleigh	525	32.6%	220	13.7%
Fareham	375	31.0%	170	14.0%
Gosport	520	33.8%	205	13.3%
Hart	220	30.7%	100	14.0%
Havant	865	35.5%	335	13.7%
New Forest	560	31.1%	210	11.7%
Rushmoor	595	36.3%	240	14.7%
Test Valley	260	22.4%	100	8.6%
Winchester	245	26.4%	85	9.2%
Hampshire	5,215	31.9%	2,080	12.7%

Source: NOMIS, 2011

Jobs density is a labour demand indicator for local areas. In areas with high jobs densities, demand exceeds supply, leading to inward commuting. Conversely, in areas with low jobs densities supply exceeds demand, leading to outward commuting or unemployment or economic inactivity. In practise though, there may not be a match between the jobs on offer in an area and the skills possessed by the residents of that area, leading to both inward and outward commuting.

The data in figure 13 shows jobs density for Hampshire and its constituent districts in 2004, 2008 and 2009. The Winchester ratio is greater than one in each of the years, indicating a high proportion of inward commuting. Gosport and Havant consistently have the lowest two ratios, with the number of jobs in Gosport equivalent to only around 50% of the resident working age population

**Figure 13: Jobs density (number of jobs divided by the working age population)**

	2004	2008	2009
Basingstoke & Deane	0.84	0.85	0.84
East Hants	0.77	0.80	0.82

	2004	2008	2009
Eastleigh	0.86	0.84	0.85
Fareham	0.78	0.87	0.84
Gosport	0.50	0.51	0.48
Hart	0.77	0.76	0.74
Havant	0.64	0.64	0.63
New Forest	0.73	0.75	0.77
Rushmoor	0.96	0.88	0.84
Test Valley	0.88	0.83	0.86
Winchester	1.10	1.07	1.07
Hampshire	0.81	0.81	0.80

Source: NOMIS, 2010

The number of vacancies notified to JobCentre Plus in Hampshire in November 2011 was 6,447, equivalent to just 40% of the total number of claimants of Job Seekers Allowance in the same month (figure 10). As shown in figure 14, the greatest number of vacancies were in Basingstoke, Eastleigh, Rushmoor and Test Valley. All areas had experienced a fall in the number of vacancies from the previous month; and the majority of areas had a lower number of vacancies than the same month in the previous year. Eastleigh, Havant and Test Valley have seen the largest fall in vacancies compared to the previous month. Winchester has 257 fewer vacancies than the previous year, which is significantly more than any other area. Across Hampshire as a whole, there were 2,488 fewer vacancies in Hampshire than in October 2011 and 233 fewer than November 2010.

**Figure 14: JobCentre Plus notified vacancies (November 2011)**

	Total	Change on:	
		One month	One year
Basingstoke & Deane	981	-195	-94
East Hants	400	-272	-4
Eastleigh	769	-317	168
Fareham	625	-72	85
Gosport	155	-172	-33
Hart	264	-149	-124
Havant	285	-390	-130
New Forest	692	-227	-164
Rushmoor	761	-30	227
Test Valley	952	-374	93
Winchester	563	-290	-257
Hampshire	6,447	-2,488	-233

Source: NOMIS, 2011

Figure 15 shows the ten most sought occupations in comparison to the ten most frequently notified vacancies for November 2011. This indicates some discrepancy between the skills and experience of those seeking work and the nature of available work opportunities. The most notified vacancy is for care assistants and home carers, with the equivalent of four jobs for every person seeking employment in this occupation. However, this analysis is limited as the location of vacancies in comparison to those seeking work is unknown.

**Figure 15: top ten sought occupations compared to top ten notified vacancies (November 2011)**

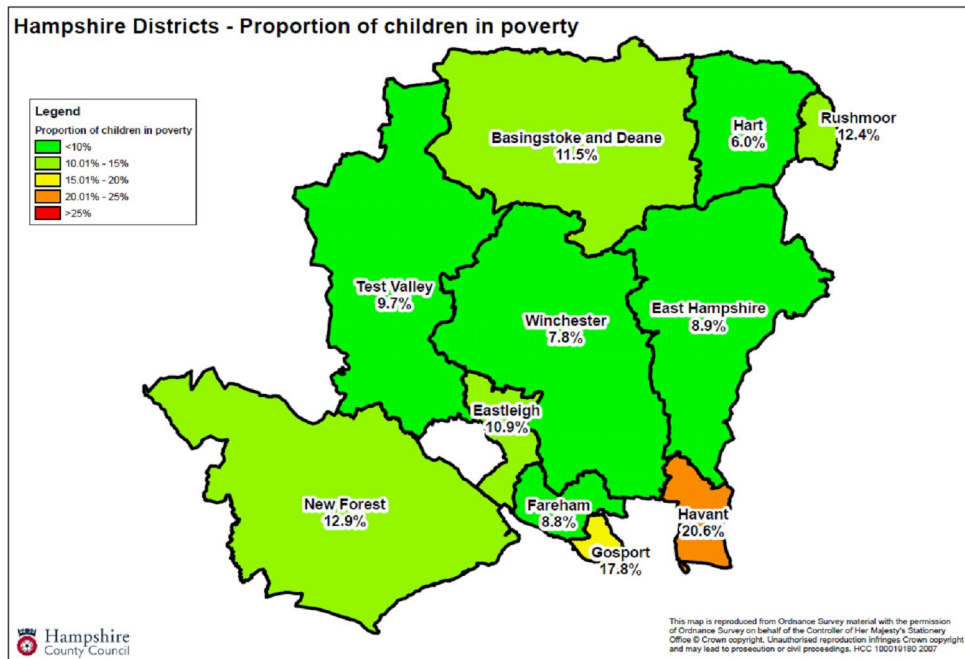
Top ten sought occupations		Top ten notified vacancies	
Sales and retail assistants	3,105	Care assistants and home carers	1,448
General office assistants/clerks	1,295	Heavy goods vehicle drivers	412
Other goods handling and storage occupations	1,175	Sales and retail assistants	299
Cleaners, domestics	585	Cleaners, domestics	286
Van drivers	555	Sales representatives	265
Labourers in process and plant operations	410	Postal workers, mail sorters, messengers, couriers	223
Kitchen and catering assistants	370	Other goods handling and storage occupations	193
Care assistants and home carers	325	Van drivers	183
Labourers in building and woodwork trades	325	Labourers in building and woodworking trades	176
Packers, bottlers, canners, fillers	305	Chefs, cooks	162

Source: NOMIS, 2011

### Low income

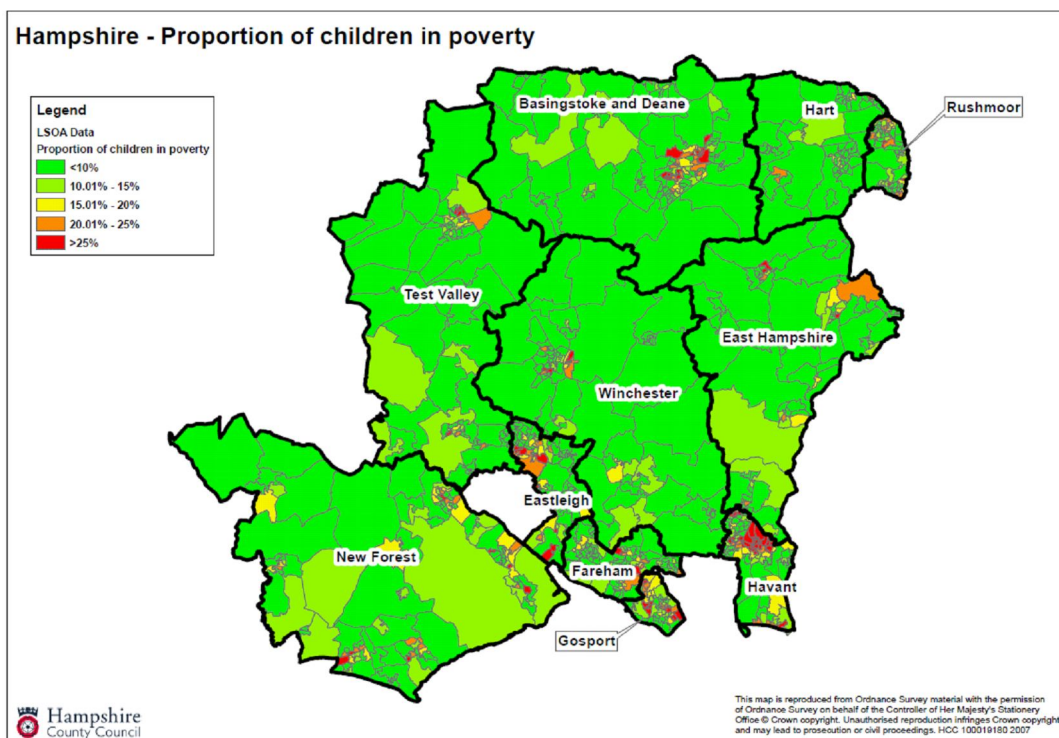
The most commonly used measure for child poverty is the percentage of children living in households receiving out of work benefits, or where the income is less than 60% of the median average nationally. Based on this definition, Hampshire has relatively low levels of child poverty (12.2%, 2008/09), although there are significant variations across districts, wards and LSOAs. The level of child poverty in some wards is around 40% and for one LSOA (E01022967, within Warren Park, Havant) it reaches almost 50% (2008/09 data). These areas are consistent with those identified as having high and persistent unemployment rates. Figure 16 shows the proportion of children at a district level.

**Figure 16: The proportion of children and young people (age 0-19) living in families in receipt of out of work benefits, or where income is less than 60% of the median average (2008/09)**



At ward level, every district in Hampshire has a ward with over 10% of children living in households in receipt of out of work benefits, or where income is less than 60% of the national median average. In total, 269 LSOAs (32.7% of the total) have levels higher than the Hampshire average (12.2%, 2008/09). Figure 17 shows the proportion of children in families in receipt of out of work benefits/low income at LSOA level, highlighting areas of poverty within each district. This clearly shows that there are pockets of deprivation in every district in Hampshire.

**Figure 17: Lower super output information for the proportion of children and young people (age 0-19) living in families in receipt of out of work benefits, or where income is less than 60% of the median average (2008/09)**



The 20 LSOAs with the highest levels of children living in families in receipt of out of work benefits, or where income is less than 60% of the national median average, are shown in figure 18. The majority of these areas are within Havant (10 of the 20), Gosport (three out of 20) and the New Forest (three out of 20).

**Figure 18: Lower Super Output Areas with the 20 highest levels of children living in families in receipt of out of work benefits, or where income is less than 60% of the national median average (2008/09)**

LSOA	Ward	District	NI 116
E01022967	Warren Park	Havant	49.7%
E01022968	Warren Park	Havant	45.7%
E01022933	Hart Plain	Havant	45.4%
E01022822	Grange	Gosport	45.0%
E01022966	Warren Park	Havant	41.4%
E01022655	Bursledon & Old Netley	Eastleigh	41.2%
E01023126	North Town	Rushmoor	41.0%
E01022915	Bondfields	Havant	40.9%
E01022901	Barncroft	Havant	39.8%
E01023156	Alamein	Test Valley	38.6%
E01022844	Town	Gosport	38.0%
E01023029	Holbury and North Blackfield	New Forest	37.7%
E01023055	Milton	New Forest	37.0%
E01022914	Bondfields	Havant	36.9%
E01022903	Battins	Havant	36.9%
E01022970	Warren Park	Havant	36.7%
E01023058	Pennington	New Forest	36.6%
E01022833	Leesland	Gosport	36.0%
E01022917	Bondfields	Havant	35.5%
E01022670	Eastleigh Central	Eastleigh	35.5%

Source: HMRC, 2011

Average weekly gross earnings in Hampshire are £500.90, above that of the England average (£483.90, 2008/09). However, this masks significant variation across districts, from £405.80 in East Hampshire, to £592.50 in Hart. In reality, the majority of districts (seven out of 11) have a lower gross weekly earning figure than the national average. Data for all districts is provided in figure 19, below.

**Figure 19: Median weekly gross income of full time employees (2008/09)**

	Median income
Basingstoke & Deane	£541.50
East Hampshire	£405.80
Eastleigh	£419.50

	Median income
Fareham	£460.00
Gosport	£423.80
Hart	£592.50
Havant	£431.30
New Forest	£440.00
Rushmoor	£635.00
Test Valley	£456.40
Winchester	£521.80
Hampshire	£500.90

Source: Annual Survey of Hours and Earning, 2008/09

### Adult skill levels

Skill levels among Hampshire's adult population are generally higher than the national average. However, the Hampshire Economic Assessment found that the incidence of highly qualified people in the county is over five percentage points lower than Berkshire and approaching ten percentage points below Surrey.

Figure 20 illustrates for persons aged 16 to 64 years, the proportions of the population reaching various levels of educational qualification. Those who do not have at least one GCSE/'O' level pass, or equivalent, are classified as having no qualifications. Within Hampshire, this accounts for approximately every twelfth person (8.8%). However, this figure is over three percentage points below that for England. Within Hampshire, the lowest percentage at district level is for Hart, at 4.8%, with Havant the highest at 11.2%, although still below the national figure.

At the opposite end of the scale, the more rural districts Winchester, Hart, Test Valley and East Hampshire have the highest percentages of their populations attaining level 4/5 qualifications, such as first or higher degrees.

**Figure 20: Qualification levels among the working age population (2009 – percentage of those aged 16-64)**

	Level 4/5 <sup>6</sup>	Level 3 <sup>7</sup>	Level 2 <sup>8</sup>	Level 1 <sup>9</sup>	Other qualifications <sup>10</sup>	No qualifications
Basingstoke & Deane	33.5	19.1	16.6	12.3	8.2	10.3
East Hants	35.1	18.8	18.9	14.7	5.2	7.3
Eastleigh	30.4	18.5	20.8	13.4	6.2	10.7

<sup>6</sup> First degree/Higher degree/NVQ levels 4 and 5/HNC/HND/Qualified Teacher Status/Qualified Medical Doctor/Dentist/Nurse/Midwife or Health Visitor

<sup>7</sup> 2+ 'A' levels/4+ 'AS' levels/Higher School Certificate/NVQ level 3/Advanced GNVQ

<sup>8</sup> 5+ 'O' level passes/5+ GCSEs (grades A\*-C)/School Certificate/1+ 'A' or 'AS' levels/NVQ level 2/Intermediate GNVQ

<sup>9</sup> 1+ 'O' level passes/1+ GCSE (any grade)/NVQ level 1/Foundation GNVQ

<sup>10</sup> City and Guilds/RSA/OCR/BTEC/Edexcel/other professional qualifications

	Level 4/5 <sup>6</sup>	Level 3 <sup>7</sup>	Level 2 <sup>8</sup>	Level 1 <sup>9</sup>	Other qualifications <sup>10</sup>	No qualifications
Fareham	26.2	19.0	22.3	19.0	7.5	6.0
Gosport	25.0	22.6	21.8	15.7	5.8	9.1
Hart	38.9	20.2	21.2	6.8	8.1	4.8
Havant	22.6	20.6	18.1	15.5	12.0	11.2
New Forest	24.2	21.6	17.6	18.6	7.2	10.8
Rushmoor	26.4	19.5	14.9	21.2	12.2	5.8
Test Valley	35.6	18.6	18.4	14.7	4.3	8.4
Winchester	46.1	19.0	9.4	13.9	2.5	9.1
Hampshire	31.5	19.7	18.0	15.1	7.2	8.8

Source: Annual population survey, NOMIS, 2010

### 3. Life chances

Children living in poverty can face significant barriers to achieving positive health, educational and future employment outcomes. Addressing these barriers is key to reducing intergenerational poverty. This section of the needs assessment considers the impact of poverty on life chances for children and young people in Hampshire.

#### Housing

Hampshire's housing stock is generally in good condition, although affordable housing is a major issue in the county, with high house price to earning ratios. Recent economic trends have seen some reduction in house prices, however the restraint in earnings in many sectors, coupled with restricted access to finance, continue to make it very difficult for many people on lower or average incomes to buy their own house.

The number of households applying to local authorities to register a housing need is an indicator of housing stress, although it is recognised that this significantly under reports actual need. In 2009, 5.8% of all households across Hampshire (31,700 households) registered a housing need (excluding those households seeking a transfer within the rented social housing sector). This is lower than the South East region (6%) and England (8.2%). Across Hampshire, there is variation, with the highest levels seen in Eastleigh and Gosport, and lowest in Basingstoke (see figure 21 below). It should be noted that the updating of housing needs registers vary; some local authorities update each quarter, whereas others may only review the list every two years or so. Therefore, numbers may not be comparable and can change significantly when a review is held.

**Figure 21: Housing need (2009)**

District	Number of households on the waiting list (excludes transfers) as at 1 April 2009	% of Households
Basingstoke and Deane	1,800	2.7
East Hampshire	2,300	5.1
Eastleigh	4,700	9.3
Fareham	1,500	3.4
Gosport	2,900	8.7
Hart	1,400	4.0
Havant	2,200	4.4
New Forest	5,200	6.9
Rushmoor	2,500	7.2
Test Valley	3,000	6.4
Winchester	3,200	7.0
Hampshire	30,600	5.8
South East	205,400	6.0
England	1,763,100	8.2

Source: Department for Communities and Local Government, 2010

The number of households in temporary accommodation varies across Hampshire, with the highest numbers found in Gosport (172 households) and the New Forest (164 households), see figure 22 below. The number in temporary accommodation, per thousand households across Hampshire, is below the national average (2.4), with the exception of Gosport (5.2) and the New Forest (2.2).

**Figure 22: Number of households in temporary accommodation (2009-10)**

District	Total number of households in temporary accommodation	No. per 1,000 households
Basingstoke and Deane	5	0.1
East Hampshire	84	1.9
Eastleigh	4	0.1
Fareham	22	0.5
Gosport	172	5.2
Hart	1	0.0
Havant	49	1.0
New Forest	164	2.2
Rushmoor	8	0.2
Test Valley	41	0.9
Winchester	14	0.3
Hampshire	564	1.1
South East	3520	1.0
England	51310	2.4

Source: Department for Communities and Local Government, 2010

### Household composition

Lone parent families are one of the groups at greater risk of being in poverty. In the 2001 Census, 16% of all households with dependent children in Hampshire were lone parent households. Data from the 2011 Census is expected to be published in 2012/13. The number of income benefit claimants with no recorded partner provides an indication of the number of dependent children of lone parents, shown in figure 23, below. This evidences that approximately 8,900 children in Hampshire live in lone parent families in receipt of income benefits. The highest numbers are in Basingstoke, Gosport, Havant and the New Forest.

**Figure 23: Income benefit claimants with no recorded partner (May 2011)**

	Total claimants	Claimants with no partner	Number of dependent children, where claimants have no recorded partner				
			One	Two	Three	Four	Five
Basingstoke & Deane	2,540	2,270	530	420	170	70	30
East Hants	1,410	1,210	240	150	80	30	10

	Total claimants	Claimants with no partner	Number of dependent children, where claimants have no recorded partner				
			One	Two	Three	Four	Five
Eastleigh	1,780	1,560	390	240	100	40	20
Fareham	1,260	1,140	260	150	80	30	10
Gosport	1,940	1,680	440	280	130	50	30
Hart	730	670	170	120	40	20	-
Havant	3,310	2,800	610	470	240	80	50
New Forest	2,640	2,310	510	340	160	50	30
Rushmoor	1,710	1,540	390	260	120	30	10
Test Valley	1,530	1,330	340	210	100	30	20
Winchester	1,340	1,190	240	160	70	30	10
Hampshire	20,180	17,700	4,120	2,800	1,300	460	220

Source: NOMIS, 2011

Of the 31,965 children in families in receipt of workless benefits, or where the income is less than 60% of the median average, 73.5% are in lone parent families (HMRC, 2008/09). The 10 LSOAs with the highest number of lone parent claimants of workless benefits/low income are shown in figure 24, below. The majority of LSOAs are within Gosport and Havant.

**Figure 24: LSOAs with the 10 highest number of lone parent claimants in Hampshire (2008/09)**

Number	LSOA	Ward	District
1	E01022822	Grange	Gosport
2	E01022820	Grange	Gosport
3	E01022655	Bursledon and Old Netley	Eastleigh
4	E01022933	Hart Plain	Havant
5	E01023029	Holbury and North Blackfield	New Forest
6	E01023156	Alamein	Test Valley
7	E01022968	Warren Park	Havant
8	E01022966	Warren Park	Havant
9	E01022833	Leesland	Gosport
10	E01022903	Battins	Havant

Source: HMRC, 2010

## Health

Nationally, infant mortality is generally higher in deprived areas. The correlation in Hampshire is not as clear, as although the highest rate of infant deaths per 1,000 live births is found in Gosport, the proportion of deaths is also higher than the county average in the New Forest and Test Valley. As shown in figure 25, the rate of deaths in both Gosport and the New Forest are higher than the England average.

**Figure 25: Infant deaths (2007-09)**

	Average annual number of deaths 2007-09	Average number of deaths per 1,000 live births
Basingstoke & Deane	6	2.73
East Hants	2	1.98
Eastleigh	4	3.06
Fareham	2	1.87
Gosport	6	5.90
Hart	2	1.86
Havant	5	3.63
New Forest	8	4.81
Rushmoor	3	2.19
Test Valley	6	4.46
Winchester	3	2.79
Hampshire	47	3.22
England	3140	4.71

Source: Health and Social Care Information Centre, 2011

A healthy weight in childhood is key to a child/young person's future life chances. Those who are overweight in childhood are more likely to be overweight in adulthood and risk associated health problems. The proportion of overweight and obese school children in Reception Year (age 4/5) and Year 6 (age 10/11) in Hampshire is generally lower than the England average, as shown in figure 26. The highest rates of overweight and obese Year 6 children are in Basingstoke, Gosport, Havant and Rushmoor. In Reception Year pupils, the highest rates of overweight and obesity are found in Fareham, Gosport, Havant and Rushmoor. The proportion of overweight Reception Year children is also higher than the county average in Test Valley and Winchester. The percentage of underweight children is highest in Basingstoke, Gosport and Rushmoor.

**Figure 26: Prevalence of underweight, overweight and obese children in Reception Year and Year 6 (2010/11)**

	Underweight		Overweight		Obese	
	Reception	Year 6	Reception	Year 6	Reception	Year 6
Basingstoke & Deane	1.4%	1.1%	11.4%	14.5%	6.8%	17.3%
East Hants	1.0%	1.2%	11.5%	14.4%	6.7%	14.8%
Eastleigh	0.8%	1.1%	11.1%	14.1%	5.7%	14.3%

	Underweight		Overweight		Obese	
	Reception	Year 6	Reception	Year 6	Reception	Year 6
Fareham	0.6%	0.6%	12.6%	12.0%	8.0%	15.7%
Gosport	1.6%	1.1%	13.2%	12.9%	8.7%	19.6%
Hart	1.0%	0.8%	10.7%	13.3%	6.0%	13.7%
Havant	1.0%	0.8%	13.9%	15.4%	7.6%	17.0%
New Forest	0.7%	0.8%	11.0%	14.4%	8.0%	12.6%
Rushmoor	1.2%	1.3%	12.4%	15.6%	8.0%	20.5%
Test Valley	1.0%	0.7%	12.3%	12.9%	6.6%	14.0%
Winchester	1.0%	2.2%	13.2%	11.9%	6.2%	13.8%
Hampshire	1.0%	1.0%	12.0%	13.8%	7.0%	15.6%
England	1.0%	1.3%	13.2%	14.4%	9.4%	19.0%

Source: Health and Social Care Information Centre, 2011

Oral hygiene is important from an early age as it helps a child to grow up with healthy teeth and gums and reduces the risks of tooth decay and dental erosion. In 2008/09, the average Hampshire child age 12 had 0.5 teeth that were decayed, missing or filled, which is lower than the England average. The highest average number of decayed, missing or filled teeth were recorded in Eastleigh, Gosport, Havant, the New Forest and Rushmoor, as shown in figure 27.

**Figure 27: Weighted mean number of decayed, missing or filled teeth in 12 year olds (2008/09)**

	No. decayed, missing or filled teeth at age 12
Basingstoke & Deane	0.50
East Hants	0.52
Eastleigh	0.65
Fareham	0.52
Gosport	0.63
Hart	0.20
Havant	0.61
New Forest	0.65
Rushmoor	0.62
Test Valley	0.44
Winchester	0.34
Hampshire	0.50
England	0.74

Source: Health and Social Care Information Centre, 2011

Teenage mothers and their children are at risk of poorer outcomes, particularly in terms of education and work for mothers. The rate of under 18 conceptions in Hampshire has fallen from an average of 33.3 for 1998-00, to 31.5 for 2007-09. Figure 28 provides data

for conception and abortion rates across the county. The highest proportion of teenage conceptions per 1,000 women aged 15-17 in the period 2007-09 were in Gosport and Havant, where rates were also higher than the England average. Teenage conceptions reduced in six of the 11 districts between 1998-00 and 2007-09, with the largest decrease in Havant (25.3%). However, rates in the remaining five districts have increased, the largest rise being in Eastleigh (21.5%), followed by Test Valley (11.4%). In addition, the proportion of teenage conceptions leading to abortion has increased in eight out of 11 districts.

**Figure 28: District conception rates (1998-00 and 2007-09)**

	1998-00			2007-09 (provisional)			% change in rate 1998-00 to 2007-09
	No.	Rate per 1,000 women aged 15-17	% leading to abortion	No.	Rate per 1,000 women aged 15-17	% leading to abortion	
Basingstoke & Deane	298	36.3	41	291	34.0	48	-6.3%
East Hants	143	22.9	45	166	24.5	50	7.0%
Eastleigh	181	27.9	54	237	33.9	54	21.5%
Fareham	163	29.9	55	177	28.9	66	-3.3%
Gosport	218	50.5	36	223	52.3	44	3.6%
Hart	100	21.0	62	95	18.5	54	-11.9%
Havant	380	55.8	37	281	41.7	50	-25.3%
New Forest	268	32.5	49	270	29.6	50	-8.9%
Rushmoor	184	39.6	42	173	33.4	50	-15.7%
Test Valley	172	29.7	49	219	33.1	55	11.4%
Winchester	123	20.8	59	134	20.9	58	0.5%
Hampshire	2,230	33.3	46	2,266	31.5	52	-5.4%
England	119,036	45	44	115,079	40.2	50	-10.7%

Source: Office for National Statistics and Teenage Pregnancy Unit, 2010

In 2008/09, Hampshire hospitals recorded a rate of 117.3 children and young people aged 0-17 admitted to hospital with unintentional<sup>11</sup> or deliberate<sup>12</sup> injuries per 10,000 population. This is an increase from 2007/08, when the rate was 109.8 admissions per 10,000. Figure 29 provides the data by district, showing the rate change in admissions between 2007/08 and 2008/09. Admissions in Rushmoor reduced by 16 per 10,000, while Gosport has seen an increase of 36 admissions per 10,000.

<sup>11</sup> The definition of an unintentional injury is an accidental external cause of harm, for example traffic accidents; falls; trips; accidental contact with tools/machinery etc; drowning; exposure; burns and scalds etc.

<sup>12</sup> The definition of a deliberate injury refers to the codes for assault, which are X85-Y09, covering different types of assaults – bodily force, sexual assault by bodily force, sharp/blunt objects etc.

**Figure 29: District level information for hospital admissions caused by unintentional and deliberate injuries (2007/08 and 2008/09)**

District	2007/08 (per 10k)	2008/09 (per 10k)	Rate change
Basingstoke and Deane	110.2	112.6	+2.4
East Hampshire	99.2	100.5	+1.3
Hart	73.9	99.0	+25.1
Rushmoor	116.8	100.8	-16.0
Fareham	102.1	115.4	+13.3
Gosport	107.8	143.8	+36.0
Havant	144.8	138.4	-6.4
Eastleigh	115.7	107.4	-8.3
New Forest	117.3	131.3	+14.0
Test Valley	102.3	124.8	+22.5
Winchester	109.7	116.6	+6.9
Hampshire	109.8	117.3	+7.5

Source: Hospital Episode Statistics, 2010

## Crime

Overall, crime rates in Hampshire are markedly below the rates for England, however rates vary widely between districts. Figure 30 shows the rate of notifiable offences per 1,000 population for 2007/08 to 2009/10. Generally, the highest rates are in the urban areas, particularly Gosport and Havant. Hart has the lowest crime rate, less than half that of Gosport and Havant.

**Figure 30: Notifiable offences recorded per 1,000 population**

	2007/08	2008/09	2009/10
Basingstoke & Deane	72.8	70.5	60.1
East Hants	53.0	52.5	51.2
Eastleigh	75.2	66.7	55.8
Fareham	53.2	49.2	41.0
Gosport	93.0	81.2	74.4
Hart	43.0	37.3	32.8
Havant	89.5	84.1	77.0
New Forest	54.6	53.7	49.8
Rushmoor	76.5	69.7	60.8
Test Valley	68.4	60.9	51.7
Winchester	56.3	53.0	49.3
Hampshire	66.2	61.6	54.7

Source: Office for National Statistics, 2011

## Education

Educational attainment is one of the most important determinants of future outcomes. Although most of Hampshire's children and young people achieve good academic outcomes, there are gaps in attainment amongst vulnerable groups.

The gap between the lowest achieving 20% and their peers at Early Years Foundation Stage in Hampshire is narrower than the England average, as shown in figure 31, below. However, this varies between districts, from 35.5% in Rushmoor, to 28.3% in Eastleigh. The gap is wider than the England average in seven of Hampshire's districts, namely Basingstoke, East Hampshire, Havant, the New Forest, Rushmoor, Test Valley and Winchester.

**Figure 31: Gap between the lowest achieving 20% and their peers at Early Years Foundation Stage (2008/09)**

	<b>Gap between the lowest achieving 20% and their peers</b>
Basingstoke & Deane	33.8%
East Hants	34.4%
Eastleigh	28.3%
Fareham	28.5%
Gosport	30.8%
Hart	28.6%
Havant	34.5%
New Forest	31.8%
Rushmoor	35.5%
Test Valley	32.0%
Winchester	32.8%
Hampshire (2010/11)	29.0%
England (2010/11)	31.5%

Source: Department for Education, 2011

Children and young people eligible for free school meals live in families in receipt of income support; Jobseekers Allowance; and/or tax credits. The gap between pupils eligible for free school meals and their peers in key tests provides one indication of the impact of poverty on children's attainment. Although the gap at Key Stage 2 is lower in Hampshire than the England average, the gap at GCSE is wider than the national figure. At Key Stage 2, five districts have a larger gap than the county average and eight have a wider gap than the England average. The district with the greatest gap is the New Forest. At GCSE level, the gap between free school meals and their peers is greater than the county average in seven districts and wider than the England average in eight districts. The gap at GCSE is greatest in Eastleigh.

**Figure 32: Gap between pupils eligible for free school meals and their peers at Key Stage 2 (percentage achieving level 4 in English and maths) and GCSE (percentage achieving five or more GCSEs grade A\*-C, including English and maths), (2010/11)**

	<b>Gap between pupils eligible for free school meals and their peers at Key Stage 2</b>	<b>Gap between pupils eligible for free school meals and their peers at GCSE</b>
Basingstoke & Deane	22.2%	35.3%
East Hants	26.2%	34.6%
Eastleigh	27.1%	39.0%
Fareham	26.4%	36.5%
Gosport	21.1%	18.5%
Hart	16.5%	32.9%
Havant	21.2%	26.1%
New Forest	29.5%	31.1%
Rushmoor	15.1%	20.9%
Test Valley	16.4%	29.0%
Winchester	27.5%	39.5%
Hampshire	25.0%	30.8%
England	20.0%	27.6%

Source: Department for Education and KEYPAS, 2011

The gap between pupils with Special Educational Needs (SEN) achieving five or more GCSEs, including English and maths, in comparison to their peers is shown in figure 33. With the exception of Basingstoke, the gap is larger in all districts than the England average.

**Figure 33: Gap between SEN pupils and their peers at GCSE (percentage achieving five or more GCSEs grade A\*-C, including English and maths), (2009/10)**

	<b>Gap between SEN pupils and their peers at GCSE</b>
Basingstoke & Deane	45.9%
East Hants	54.7%
Eastleigh	63.5%
Fareham	55.1%
Gosport	47.7%
Hart	48.9%
Havant	46.7%
New Forest	54.1%
Rushmoor	47.5%
Test Valley	48.4%
Winchester	58.0%
Hampshire (2010/11)	52.4%

	<b>Gap between SEN pupils and their peers at GCSE</b>
England (2010/11)	46.5%

Source: Department for Education and KEYPAS, 2011

Nationally, children and young people from ethnic minority backgrounds are at higher risk of living in poverty. The percentage of these pupils achieving five or more GCSEs, including English and maths varies significantly between districts and ethnicity, as shown in figure 34, below. The lowest achieving ethnic groups in 2009/10 were Gypsy, Roma and Traveller; Black Caribbean; Any other Black background; Irish; Bangladeshi; and other Asian background. Districts where ethnic minority groups attainment are consistently below the county average are Basingstoke, Gosport, Rushmoor, East Hampshire and the New Forest.

**Figure 34: Percentage of ethnic minority pupils achieving five or more GCSEs, including English and maths (2009/10)**

	Gypsy, Roma & Traveller	Any other White background	Black Caribbean	White/Black Caribbean	Black African & White/Black African	Any other Black background	Pakistani	Irish
Basingstoke & Deane	0.0%	54.5%	0.0%	61.5%	62.5%	33.3%	100.0%	33.3%
East Hants	0.0%	75.0%	n/a	100.0%	57.1%	n/a	n/a	66.7%
Eastleigh	0.0%	84.0%	50.0%	66.7%	60.0%	0.0%	83.3%	50.0%
Fareham	n/a	83.3%	n/a	0.0%	57.1%	n/a	n/a	50.0%
Gosport	n/a	52.9%	0.0%	100.0%	0.0%	0.0%	n/a	0.0%
Hart	50.0%	60.0%	0.0%	80.0%	80.0%	n/a	100.0%	n/a
Havant	n/a	75.0%	100.0%	50.0%	40.0%	100.0%	n/a	100.0%
New Forest	40.0%	54.5%	50.0%	100.0%	50.0%	33.3%	n/a	50.0%
Rushmoor	50.0%	50.0%	33.3%	12.5%	37.5%	0.0%	50.0%	0.0%
Test Valley	63.6%	n/a	50.0%	50.0%	n/a	100.0%	66.7%	100.0%
Winchester	n/a	83.9%	0.0%	100.0%	0.0%	n/a	100.0%	0.0%
Hampshire	28.6%	66.9%	26.7%	58.7%	52.1%	36.4%	73.7%	45.0%

Source: Department for Education and KEYPAS, 2010 (n/a = less than five pupils in the cohort)

**Figure 34 continued: Percentage of minority ethnic pupils achieving five or more GCSEs, including English and maths (2009/10)**

	White & Asian	Any other mixed	Indian	Bangladeshi	Other Asian background	Chinese	Any other ethnic group
Basingstoke & Deane	66.7%	63.6%	72.7%	20.0%	40.0%	100.0%	30.0%
East Hants	50.0%	50.0%	50.0%	50.0%	36.4%	66.7%	n/a
Eastleigh	77.8%	60.0%	80.0%	33.3%	42.9%	80.0%	0.0%
Fareham	66.7%	85.7%	100.0%	0.0%	66.7%	42.9%	100.0%
Gosport	50.0%	0.0%	100.0%	n/a	100.0%	75.0%	0.0%
Hart	100.0%	23.8%	100.0%	100.0%	66.7%	100.0%	66.7%
Havant	100.0%	71.4%	80.0%	100.0%	60.0%	100.0%	100.0%
New Forest	57.1%	66.7%	100.0%	33.3%	50.0%	33.3%	25.0%
Rushmoor	0.0%	50.0%	100.0%	100.0%	41.8%	66.7%	80.0%
Test Valley	60.0%	20.0%	75.0%	n/a	50.0%	100.0%	60.0%
Winchester	88.9%	100.0%	88.9%	n/a	50.0%	37.5%	75.0%
Hampshire (2010/11)	74.3%	59.7%	80.3%	45.0%	43.7%	70.6%	52.8%

Source: Department for Education and KEYPAS, 2010 (n/a = less than five pupils in the cohort)

### Post-16 education, training and employment

As a result of recession, the number of young people not in education, employment or training (NEET) increased in Hampshire, rising from 5.2% of 16-18 year olds in 2007/08 to 6.3% in 2008/09. Since then, the measure for NEET has been revised, to become the percentage of Year 12-13 students not in education, employment or training, with the figure for November 2011 standing at 5.7%. The highest level of NEET was in Rushmoor, at 9.5% and the lowest level in Winchester at 3.9%, as shown in figure 35.

**Figure 35: Percentage of Year 12-13 students not in education, employment or training (November 2011)**

	Percentage of Year 12-13 students not in education, employment or training
Basingstoke & Deane	5.8%
East Hants	6.1%
Eastleigh	4.8%
Fareham	4.8%
Gosport	6.2%
Hart	3.5%
Havant	8.3%
New Forest	5.7%

	<b>Percentage of Year 12-13 students not in education, employment or training</b>
Rushmoor	9.5%
Test Valley	5.2%
Winchester	3.9%
Hampshire	5.7%

*Source: Core Plus, 2011*

## Hampshire child poverty ranking

The national Child Poverty Unit has developed a 'basket' of 20 indicators to provide a broad assessment of both the incidence and impact of child poverty in an area, covering the three key blocks detailed in the previous section of this needs assessment. This also ensures that factors contributing to intergenerational cycles of poverty are captured. In Hampshire, the data for these indicators has been collated and weighted to establish a local ranking of child poverty at LSOA level. The full methodology is described in appendix 1.

The top 20 LSOAs in the basket of indicators assessment are all in the New Forest and Havant, as can be seen in figure 36. It is not until number 31 in the ranking that another district appears (East Hampshire). The full list of LSOAs and their rank is provided in appendix 2.

**Figure 36: Hampshire child poverty ranking – 20 LSOAs where child poverty has the greatest incidence and impact**

No.	LSOA code	Ward	District
1	E01023055	Milton	New Forest
2	E01023058	Pennington	New Forest
3	E01023029	Holbury and North Blackfield	New Forest
4	E01023006	Butts Ash & Dibden Purlieu	New Forest
5	E01023018	Fernhill	New Forest
6	E01023077	Totton East	New Forest
7	E01022966	Warren Park	Havant
8	E01023017	Fernhill	New Forest
9	E01023019	Fernhill	New Forest
10	E01022970	Warren Park	Havant
11	E01022901	Barncroft	Havant
12	E01023088	Totton West	New Forest
13	E01022914	Bondfields	Havant
14	E01022967	Warren Park	Havant
15	E01022913	Bondfields	Havant
16	E01022968	Warren Park	Havant
17	E01022933	Hart Plain	Havant
18	E01022915	Bondfields	Havant
19	E01022969	Warren Park	Havant
20	E01023010	Dibden & Hythe East	New Forest

## Next steps

### Implications for the Children and Young People's Plan

The findings of this child poverty needs assessment will be used to inform Hampshire's new CYPP. Activities aimed at reducing child poverty will be captured within the action plan and monitored in line with Children's Trust governance arrangements.

In summary, the needs assessment indicates the following areas for action:

#### Financial support:

- Promoting the childcare element of Working Tax Credit and the benefits of registered childcare, with a focus on Havant, the New Forest, and parts of Rushmoor, Gosport and Test Valley.
- Targeting financial support/education for families to Gosport, Fareham and Test Valley.

#### Employment and skills:

- Focusing support for finding employment in Basingstoke, Gosport, Havant, the New Forest, Rushmoor and Eastleigh.
- Providing specific, targeted support for long term unemployed in Basingstoke, Eastleigh, Gosport, Havant and Rushmoor.
- Promoting business growth (and therefore, jobs) in Gosport and Havant.
- Developing and promoting flexible learning opportunities for parents in Havant, the New Forest, Eastleigh and Basingstoke.
- Supporting lone parents to get into work.

#### Life chances:

- Addressing potential shortfalls in social housing in Gosport and the New Forest.
- Targeting preventative/early intervention health services and support to Gosport, the New Forest, Test Valley, Rushmoor and Basingstoke, particularly healthy weight strategies and accident prevention.
- Continuing to focus sexual health education and advice services on areas of highest teenage conception in Gosport and Havant.
- Continuing to focus crime prevention activity on areas with the highest incidence, including Gosport and Havant.
- Identifying and intervening early when pupils need extra support or are falling behind, particularly those eligible for free school meals, with SEN or Black and minority ethnic children and young people. Focus on schools where the gap between these pupils and their peers is widest, particularly in Eastleigh, Basingstoke, Gosport, Rushmoor, East Hampshire and the New Forest).
- Targeting information, advice and guidance on education, training and employment opportunities to young people in Rushmoor and Havant.

## Responsibilities

The Child Poverty Act 2010 lists a number of statutory partners who are responsible for working together to reduce child poverty in an area. In addition to the County Council, this includes:

- District councils;
- The Police authority;
- Chief officer of Police;
- Strategic Health Authority;
- Primary Care Trust;
- Youth Offending Team;
- Probation Service;
- JobCentre Plus.

In Hampshire, the development of the child poverty needs assessment and strategy (to be integrated within the CYPP), is led by the Children's Trust, which encompasses the above partners and also:

- Hampshire Safeguarding Children Board;
- Local Children's Partnerships Chairs (incorporating representation from schools and colleges);
- Adult Services;
- The Alliance (representing children and young people's voluntary sector organisations in Hampshire);
- Hampshire Governors Association.

The Children's Trust is responsible for promoting co-operation in order to improve outcomes for all Hampshire's children and young people, with a focus on addressing inequalities for those facing the greatest risks and barriers and strengthening support for individual children, young people, their families and communities, where needed. The Trust is not a separate legal entity - each partner retains its own functions and responsibilities.

The role of the Children's Trust includes:

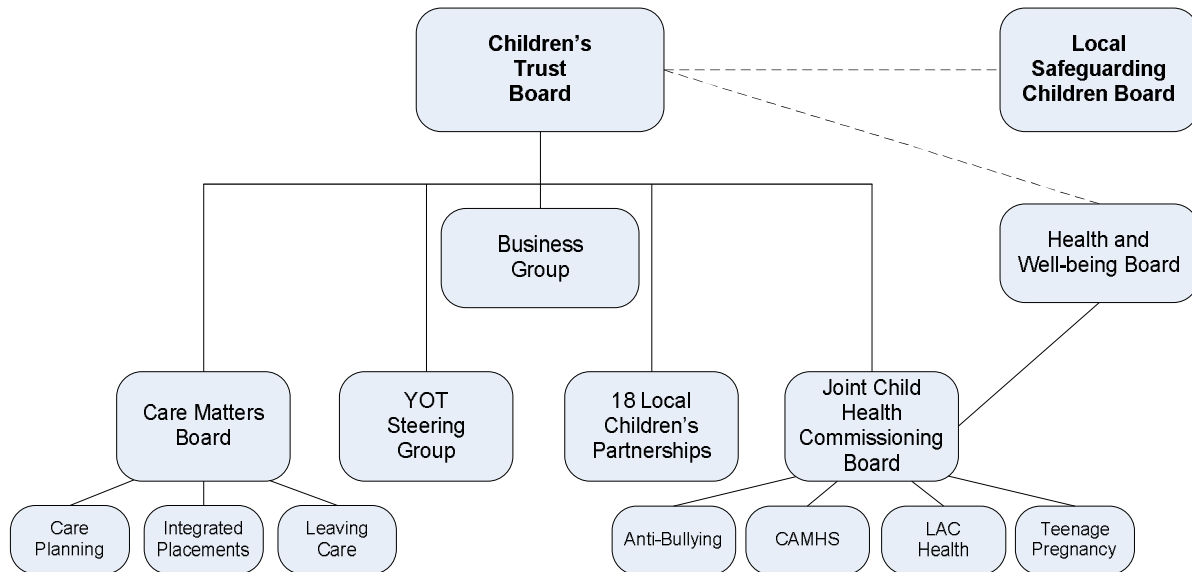
- developing and promoting a local, outcome led vision, set out in the Children and Young People's Plan (CYPP), to drive improved outcomes for local children, young people and families;
- achieving this through better integrated services, which narrow gaps in outcomes for disadvantaged groups against a background of improved outcomes for all;
- putting in place robust arrangements for inter-agency governance (through the Children's Trust Board);
- developing integrated strategies such as: joint planning and commissioning; pooled and aligned budgets; shared data and other information; and workforce development (through the CYPP);
- supporting these strategies through integrated processes, supported through effective joint working - sustained by shared language and processes;

- developing and promoting integrated front line delivery organised around the child, young person or family rather than professional or institutional boundaries.

The Children's Trust governance model consists of:

- the Children's Trust Board – providing oversight, vision and direction setting;
- a Business Group – responsible for performance management, planning and use of resources;
- 18 Local Children's Partnerships (LCPs) – local implementation and delivery.

The structure is illustrated below:



The **Children's Trust Board** is the key strategic group, with responsibility for developing the vision and direction for the Trust, including the CYPP.

The **Business Group** has responsibility for managing the day-to-day functions of the Children's Trust, in accordance with priorities set out in the CYPP. This includes planning, performance management and oversight of resources.

**LCPs** are the 'delivery arm' of Hampshire Children's Trust at a local level. They support implementation of the priorities of the CYPP through local delivery plans. Members retain accountability to their existing governance and management arrangements; coming together to agree common priorities and action to improve outcomes for local children and young people.

LCPs are based upon direct involvement from all schools and partners in an area and are key to improving a wide range of outcomes (both educational and social) for children and young people.

## Glossary

<b>Bankruptcy Order</b>	An order of the court, based upon a creditor's or debtor's petition which makes an individual bankrupt.
<b>Children and Young People's Plan (CYPP)</b>	The overarching plan for Hampshire's Children's Trust.
<b>Children's Trust</b>	The local partnership which brings together the organisations responsible for services for children, young people and families in a shared commitment to improving children's lives.
<b>Debt Relief Order</b>	Apply to debtors who owe up to £15,000 of unsecured debt, who do not own property or have assets of £300 or less and who have a disposable income, after all essential costs, of £50 or less.
<b>Early Years Foundation Stage (EYFS)</b>	The framework for learning, development and care for children aged 0 to five.
<b>Free school meals</b>	Children and young people eligible for free school meals live in families in receipt of income support; Jobseekers Allowance; and/or tax credits.
<b>Gross earnings</b>	Earnings before tax deductions.
<b>Hampshire Economic Assessment</b>	An analysis of local economic conditions, intended to support development of economic prosperity in the area.
<b>HMRC</b>	Her Majesty's Revenue and Customs.
<b>Index of Multiple Deprivation (IMD)</b>	Highlights areas of disadvantage, by considering local levels of: income; employment; health and disability; education, skills and training; barriers to housing and services; crime; and living environment. Average results from across England are compared, forming a 'ranking' of Lower Super Output Areas.
<b>Individual Voluntary Arrangement</b>	An alternative to bankruptcy – a person can enter into an IVA and pay the maximum possible amount to the creditors to repay their debt.
<b>Job Seekers Allowance</b>	The benefit paid to unemployed people while they are looking for work.
<b>Jobs density</b>	A labour demand indicator for local areas. In areas with high jobs densities, demand exceeds supply, leading to inward commuting. Conversely, in areas with low jobs densities supply exceeds demand, leading to outward commuting or unemployment or economic inactivity.

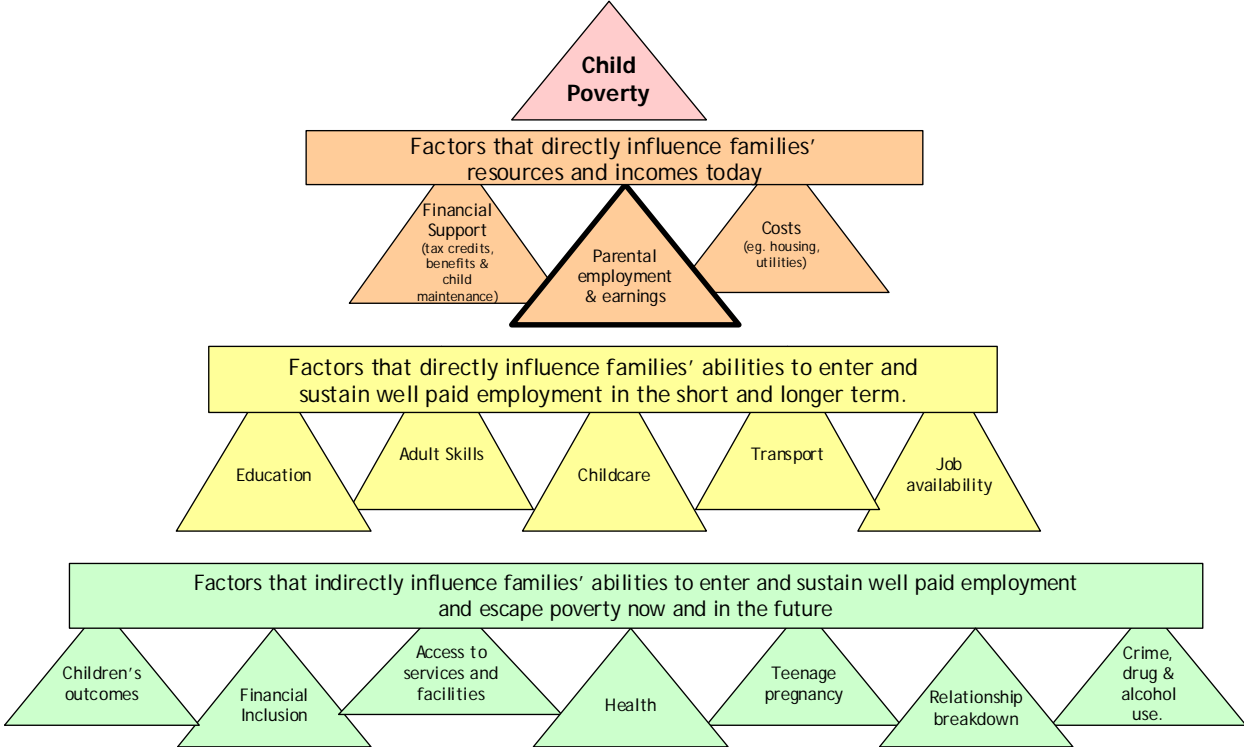
<b>Joint Health and Well-being Strategy</b>	A joint strategy for the delivery of integrated local health and well-being services, based upon the needs and assets described in the Joint Strategic Needs Assessment. Developed and implemented by the Joint Health and Well-being Board.
<b>Joint Strategic Needs Assessment</b>	A comprehensive assessment of the health and well-being needs of the local population.
<b>Key 'out-of-work' benefits</b>	Job Seekers Allowance, employment support allowance/incapacity benefit, lone parent benefits and other income related benefits. Provides a more accurate reflection of exclusion from the labour market than Job Seekers Allowance alone.
<b>Local Children's Partnership (LCP)</b>	The 'delivery arm' of Hampshire Children's Trust at a local level. They support implementation of the priorities of the CYPP through local delivery plans.
<b>Lower Super Output Area (LSOA)</b>	A sub-ward geography averaging approximately 1,500 people. Wards are divided into several LSOAs. LSOAs do not have names and are referenced by codes.
<b>Median</b>	A type of average - the 'middle' number in a sorted list of numbers.
<b>Mosaic Public Sector Classification</b>	A classification of household types - groups households into one of 15 categories, based on 400 different sources of data, including the Electoral Roll, Council Tax property valuations, house sale prices, lifestyle surveys and consumer data
<b>NEET</b>	A measure of the proportion of Year 12-13 students who are not in education, employment or training.
<b><i>Open for Business Plan</i></b>	Hampshire County Council's overarching strategic plan.
<b>Social housing</b>	Housing that is owned and managed by Local Authorities or Registered Social Landlords.
<b>Special Educational Needs (SEN)</b>	Learning difficulties or disabilities that make it harder for children to learn or access education than most children of the same age.
<b>Ward</b>	An geographical unit, setting out the electoral boundaries for an area.
<b>Working Tax Credit</b>	A payment for people who are working and on a low income.

# Appendix 1: Methodology for the Hampshire Child Poverty Ranking

## Child poverty basket of indicators

The national Child Poverty Unit has developed a 'basket' of 20 indicators to provide a broad assessment of both the incidence and impact of child poverty in an area. This is based upon the factors that are best recognised as impact on child poverty, as shown in figure 37, below.

Figure 37: Factors impacting on child poverty



The full list of indicators is shown in figure 38, below.

Figure 38: Indicators in the child poverty basket

Tier	Outcome to be measured	Indicator
<b>First Tier: High Level Outcome</b>	All of the children living in poverty in the local area	Proportion of children living in workless households, or where the income is less than 60% of the median average
<b>Second Tier: Factors that directly influence families' incomes and resources today</b>	The number of parents in employment	Overall employment rate
	The earnings of parents in employment	Median income of employees in the area
	The proportion of families with children living in decent homes	Number of households living in temporary accommodation
	The proportion of families with children experiencing fuel poverty	Percentage of people receiving income based benefits living in homes with a low energy rating

Tier	Outcome to be measured	Indicator
<p><b>Third Tier:</b> Factors that directly influence families' abilities to enter and sustain well paid employment in the short and longer term.</p>	<p>The skills levels of parents</p>	<p>Proportion of the working age population qualified to Level 2 or above</p>
	<p>The levels of achievement and progression amongst children and young people, particularly those from low income families and other disadvantaged groups.</p>	<p>The gap in the achievement of a Level 2 qualification by the age of 19 for those who were eligible for free school meals at age 15 and their peers</p>
		<p>The gap between the lowest achieving 20% at Early Years Foundation Stage and their peers</p>
		<p>Percentage of children in care achieving five or more GCSEs grade A*-C, including Maths and English</p>
		<p>The achievement gap between pupils eligible for free school meals and their peers at Key Stage 2 (percentage achieving level 4 or above in English and maths)</p>
		<p>The achievement gap between pupils eligible for free school meals and their peers at GCSE (percentage achieving five or more GCSEs grade A*-C, including English and maths)</p>
		<p>The gap between SEN pupils and their peers at GCSE (percentage achieving five or more GCSEs grade A*-C, including English and maths)</p>
		<p>Young people from low income backgrounds progressing to higher education.</p>
		<p>Percentage of Black and minority ethnic pupils achieving five or more GCSEs grade A*-C, including English and maths</p>
	<p>Percentage of Year 12-13 students who are not in education, employment or training</p>	
<p>The sufficiency of suitable and affordable childcare for parents in employment and training</p>	<p>Take up of the childcare element of Working Tax Credit among low income families</p>	
<p>Additional indicators: factors that indirectly influence families' ability to enter and sustain well paid employment and escape poverty, now and in the future</p>		<p>Rate of conceptions for 15-17 year old women, per 1,000 population</p>
		<p>Percentage of adults with learning disabilities in employment</p>
		<p>Percentage of adults in contact with mental health services in employment</p>
		<p>Working age people claiming out of work benefits in the worst performing neighbourhoods</p>
		<p>Percentage of small businesses in an area showing employment growth</p>

**Determining the Hampshire ranking for each indicator**

Data was gathered for each of the indicators within the child poverty basket, wherever possible at LSOA level. If data was not available at LSOA level, then the following process was used:

- Where data was only available at **county level**, the same county figure was placed against every LSOA e.g. all 822 LSOAs got the same score.
- Where data was available at **district level**, the district figure was placed against each LSOA for that district e.g. all LSOAs in the New Forest district had the New Forest district score assigned against them.

Each LSOA was allocated a ‘Hampshire rank’ between 1 to 822 for each of the indicators (where 1 was the relatively worst performing LSOA; and 822 the top performing). The rank provides a reflection of how the LSOA performs against the other Hampshire LSOAs.

Based on the same methodology used for assigning data (described above), rankings were assigned as follows:

- Where only **county level** data was used, all LSOAs were assigned a rank of 1.
- Where **district level** data was used, each LSOA in that district received the same rank.

**Determining the overarching child poverty ranking**

Once each LSOA had received a performance ranking for each indicator, this was then used to determine an overall ‘Hampshire child poverty ranking’ based on the following method:

- **Step one:** Each dataset for each LSOA was given a ‘score’ for the purposes of collating performance across the various datasets. The scoring system was the reverse of the ranking system - so if the rank for an LSOA for a particular dataset was 1, then the score assigned would be 822.
- **Step two:** Each dataset was given a weighting to reflect their importance as a contributing factor to child poverty (using the three tiers shown in figure 37). The weighting is detailed in the table below.

Tier	Weighting
First Tier	10
Second Tier	3
Third Tier	2
Additional Indicators	1

- **Step three:** The final score for each dataset for each LSOA was determined by multiplying the score (step one) against the weighting (step two).
- **Step four:** The final scores for each dataset were added to create an overall score for each LSOA.
- **Step five:** An overall child poverty ranking was assigned to each LSOA based on their total score (step four), where 1 is the LSOA with the highest level of poverty and 822 is the LSOA with the lowest level of poverty.

## Appendix 2: Hampshire Child Poverty Ranking in full

Rank	District	Ward	LSOA code
1	New Forest	Milton	E01023055
2	New Forest	Pennington	E01023058
3	New Forest	Holbury and North Blackfield	E01023029
4	New Forest	Butts Ash & Dibden Purlieu	E01023006
5	New Forest	Fernhill	E01023018
6	New Forest	Totton East	E01023077
7	Havant	Warren Park	E01022966
8	New Forest	Fernhill	E01023017
9	New Forest	Fernhill	E01023019
10	Havant	Warren Park	E01022970
11	Havant	Barncroft	E01022901
12	New Forest	Totton West	E01023088
13	Havant	Bondfields	E01022914
14	Havant	Warren Park	E01022967
15	Havant	Bondfields	E01022913
16	Havant	Warren Park	E01022968
17	Havant	Hart Plain	E01022933
18	Havant	Bondfields	E01022915
19	Havant	Warren Park	E01022969
20	New Forest	Dibden & Hythe East	E01023010
21	Havant	Barncroft	E01022902
22	New Forest	Hythe West and Langdown	E01023037
23	Havant	Barncroft	E01022900
24	Havant	Bedhampton	E01022908
25	Havant	Battins	E01022905
26	New Forest	Holbury and North Blackfield	E01023033
27	Havant	Battins	E01022906
28	New Forest	Buckland	E01023002
29	Havant	Battins	E01022903
30	Havant	Bondfields	E01022917
31	East Hampshire	Whitehill Deadwater	E01022635
32	East Hampshire	Alton Eastbrooke	E01022575
33	Havant	Stakes	E01022959
34	Havant	Stakes	E01022964
35	Havant	Stakes	E01022965
36	New Forest	Lymington Town	E01023042
37	New Forest	Totton North	E01023083
38	Havant	Barncroft	E01022899
39	New Forest	Dibden & Hythe East	E01023008
40	East Hampshire	Alton Wooteys	E01022579
41	New Forest	Fordingbridge	E01023022
42	New Forest	Totton East	E01023079
43	New Forest	Becton	E01022988
44	New Forest	Totton Central	E01023075

Rank	District	Ward	LSOA code
45	New Forest	Milton	E01023054
46	Havant	Hart Plain	E01022934
47	New Forest	Ringwood South	E01023068
48	New Forest	Hythe West and Langdown	E01023039
49	New Forest	Totton South	E01023085
50	New Forest	Fawley, Blackfield & Langley	E01023015
51	New Forest	Furzedown & Hardley	E01023027
52	Havant	Hayling East	E01022940
53	New Forest	Pennington	E01023061
54	East Hampshire	Headley	E01022603
55	Havant	Cowplain	E01022919
56	East Hampshire	Petersfield Causeway	E01022621
57	New Forest	Fordingbridge	E01023023
58	New Forest	Ringwood North	E01023065
59	East Hampshire	Alton Westbrooke	E01022576
60	Havant	Stakes	E01022960
61	New Forest	Totton South	E01023086
62	New Forest	Ringwood South	E01023070
63	New Forest	Bransgore & Burley	E01022996
64	Havant	Battins	E01022904
65	Havant	Bondfields	E01022916
66	New Forest	Furzedown & Hardley	E01023028
67	Test Valley	Alamein	E01023156
68	Fareham	Fareham South	E01022739
69	Havant	Emsworth	E01022925
70	New Forest	Fawley, Blackfield & Langley	E01023014
71	East Hampshire	Whitehill Pinewood	E01022640
72	Havant	St Faith's	E01022957
73	Havant	Hayling East	E01022936
74	Havant	St Faith's	E01022956
75	New Forest	Totton West	E01023090
76	East Hampshire	Horndean Murray	E01022614
77	Fareham	Fareham North-West	E01022734
78	New Forest	Milton	E01023057
79	Eastleigh	Bursledon & Old Netley	E01022655
80	Havant	Hayling West	E01022942
81	New Forest	Totton North	E01023081
82	Test Valley	Abbey	E01023151
83	Test Valley	Alamein	E01023153
84	Havant	Stakes	E01022961
85	New Forest	Boldre & Sway	E01022989
86	Fareham	Fareham North-West	E01022732
87	New Forest	Buckland	E01023001
88	Havant	Purbrook	E01022949
89	New Forest	Lyndhurst	E01023046
90	Fareham	Portchester East	E01022761

Rank	District	Ward	LSOA code
91	Fareham	Fareham South	E01022738
92	Havant	Bedhampton	E01022911
93	New Forest	Bransgore & Burley	E01022997
94	Test Valley	Alamein	E01023157
95	New Forest	Marchwood	E01023049
96	New Forest	Milton	E01023056
97	Havant	Hart Plain	E01022932
98	Havant	Bedhampton	E01022907
99	New Forest	Brockenhurst & Forest South East	E01023000
100	New Forest	Brockenhurst & Forest South East	E01022999
101	Eastleigh	Eastleigh Central	E01022670
102	Eastleigh	Eastleigh South	E01022681
103	Havant	Waterloo	E01022976
104	New Forest	Ringwood North	E01023064
105	Basingstoke & Deane	Buckskin	E01022484
106	Basingstoke & Deane	Popley East	E01022541
107	Basingstoke & Deane	Popley West	E01022542
108	New Forest	Ashurst, Copythorne South & Netley Marsh	E01022979
109	Basingstoke & Deane	Norden	E01022523
110	Test Valley	St Mary's	E01023205
111	Fareham	Stubbington	E01022777
112	Eastleigh	Bishopstoke West	E01022649
113	Winchester	St Luke	E01023260
114	Eastleigh	Eastleigh South	E01022680
115	Gosport	Grange	E01022822
116	Basingstoke & Deane	Popley East	E01022540
117	New Forest	Holbury and North Blackfield	E01023030
118	Basingstoke & Deane	Buckskin	E01022487
119	New Forest	Butts Ash & Dibden Purlieu	E01023004
120	Basingstoke & Deane	Buckskin	E01022485
121	New Forest	Totton North	E01023082
122	Test Valley	St Mary's	E01023201
123	Gosport	Town	E01022843
124	Basingstoke & Deane	South Ham	E01022550
125	Havant	St Faith's	E01022953
126	New Forest	Lymington Town	E01023041
127	New Forest	Becton	E01022987
128	Gosport	Town	E01022844
129	Fareham	Fareham North-West	E01022733
130	New Forest	Totton North	E01023080
131	New Forest	Totton West	E01023089
132	New Forest	Pennington	E01023059
133	Fareham	Stubbington	E01022779
134	Test Valley	Alamein	E01023154
135	Havant	Hayling East	E01022939
136	Winchester	St Luke	E01023261

Rank	District	Ward	LSOA code
137	East Hampshire	Petersfield Heath	E01022623
138	East Hampshire	Lindford	E01022615
139	Eastleigh	Hamble-le-Rice & Butlocks Heath	E01022690
140	Havant	Hayling East	E01022941
141	Eastleigh	Netley Abbey	E01022711
142	Havant	Bedhampton	E01022910
143	East Hampshire	Liss	E01022616
144	Gosport	Grange	E01022821
145	Basingstoke & Deane	Norden	E01022524
146	Fareham	Fareham East	E01022723
147	New Forest	Barton	E01022982
148	New Forest	Dibden & Hythe East	E01023007
149	Eastleigh	Eastleigh South	E01022677
150	Gosport	Grange	E01022820
151	Winchester	St Luke	E01023262
152	East Hampshire	Whitehill Deadwater	E01022636
153	Test Valley	Tadburn	E01023206
154	East Hampshire	Horndean Downs	E01022607
155	New Forest	Holbury and North Blackfield	E01023031
156	Eastleigh	West End South	E01022716
157	Basingstoke & Deane	South Ham	E01022549
158	Havant	Hart Plain	E01022935
159	New Forest	Downlands & Forest	E01023011
160	Havant	Hayling East	E01022937
161	New Forest	Marchwood	E01023050
162	Basingstoke & Deane	South Ham	E01022552
163	Winchester	St John & All Saints	E01023256
164	Basingstoke & Deane	Buckskin	E01022486
165	New Forest	Fordingbridge	E01023024
166	East Hampshire	Clanfield & Finchdean	E01022589
167	Eastleigh	Bursledon & Old Netley	E01022656
168	New Forest	Ringwood East & Sopley	E01023063
169	Eastleigh	Eastleigh Central	E01022668
170	Eastleigh	Eastleigh South	E01022679
171	East Hampshire	Bramshott & Liphook	E01022583
172	Eastleigh	Eastleigh North	E01022673
173	Test Valley	Harroway	E01023183
174	New Forest	Ringwood South	E01023071
175	New Forest	Totton Central	E01023072
176	Havant	Cowplain	E01022918
177	Gosport	Bridgemary North	E01022800
178	Basingstoke & Deane	Tadley North	E01022556
179	East Hampshire	Bramshott & Liphook	E01022584
180	New Forest	Milford	E01023051
181	Gosport	Bridgemary North	E01022801
182	Basingstoke & Deane	Popley East	E01022538

Rank	District	Ward	LSOA code
183	Test Valley	St Mary's	E01023202
184	Basingstoke & Deane	Winklebury	E01022568
185	Basingstoke & Deane	Eastrop	E01022501
186	East Hampshire	East Meon	E01022592
187	Fareham	Park Gate	E01022755
188	Gosport	Bridgemary South	E01022803
189	Basingstoke & Deane	Brighton Hill South	E01022478
190	Havant	Waterloo	E01022973
191	Basingstoke & Deane	Brighton Hill North	E01022474
192	Gosport	Leesland	E01022833
193	Eastleigh	Botley	E01022652
194	Gosport	Forton	E01022818
195	Gosport	Grange	E01022819
196	Basingstoke & Deane	Brookvale & Kings Furlong	E01022482
197	East Hampshire	Whitehill Waldown	E01022641
198	Fareham	Portchester East	E01022760
199	Basingstoke & Deane	Winklebury	E01022567
200	Basingstoke & Deane	Popley West	E01022543
201	Fareham	Fareham North	E01022728
202	Havant	Hayling West	E01022945
203	Basingstoke & Deane	Rooksdown	E01022545
204	Fareham	Park Gate	E01022758
205	Havant	Stakes	E01022963
206	Fareham	Fareham South	E01022737
207	East Hampshire	Whitehill Hogmoor	E01022637
208	Eastleigh	West End North	E01022715
209	Havant	Stakes	E01022962
210	Eastleigh	Eastleigh South	E01022678
211	East Hampshire	Petersfield Causeway	E01022622
212	Basingstoke & Deane	Norden	E01022527
213	Gosport	Forton	E01022817
214	New Forest	Boldre & Sway	E01022990
215	Basingstoke & Deane	Popley East	E01022539
216	Winchester	St John & All Saints	E01023258
217	Test Valley	North Baddesley	E01023192
218	East Hampshire	Whitehill Hogmoor	E01022638
219	New Forest	Ringwood North	E01023066
220	Basingstoke & Deane	Norden	E01022526
221	Havant	Emsworth	E01022929
222	New Forest	Lymington Town	E01023043
223	Basingstoke & Deane	South Ham	E01022548
224	Basingstoke & Deane	Popley West	E01022544
225	Gosport	Brockhurst	E01022807
226	Basingstoke & Deane	Brighton Hill South	E01022479
227	East Hampshire	Alton Eastbrooke	E01022574
228	Test Valley	Tadburn	E01023208

Rank	District	Ward	LSOA code
229	Eastleigh	Eastleigh Central	E01022671
230	Eastleigh	Eastleigh Central	E01022669
231	New Forest	Ashurst, Copythorne South & Netley Marsh	E01022978
232	Test Valley	Cupernham	E01023176
233	New Forest	Hordle	E01023034
234	Gosport	Peel Common	E01022834
235	Test Valley	Romsey Extra	E01023199
236	New Forest	Milford	E01023052
237	Test Valley	Abbey	E01023150
238	Fareham	Fareham North-West	E01022730
239	Havant	Emsworth	E01022927
240	New Forest	Becton	E01022986
241	New Forest	Fawley, Blackfield & Langley	E01023016
242	Gosport	Christchurch	E01022811
243	Winchester	St Barnabas	E01023250
244	Havant	Hayling West	E01022946
245	Eastleigh	Hedge End Wildern	E01022701
246	Gosport	Rowner & Holbrook	E01022840
247	Fareham	Titchfield	E01022781
248	Basingstoke & Deane	Burghclere	E01022488
249	Eastleigh	Eastleigh North	E01022672
250	Gosport	Peel Common	E01022835
251	Eastleigh	Chandler's Ford East	E01022660
252	Winchester	Bishops Waltham	E01023221
253	New Forest	Marchwood	E01023048
254	Havant	Purbrook	E01022952
255	Basingstoke & Deane	Kingsclere	E01022520
256	New Forest	Marchwood	E01023047
257	East Hampshire	Whitehill Pinewood	E01022639
258	Fareham	Fareham East	E01022724
259	Gosport	Bridgemary South	E01022805
260	Basingstoke & Deane	Grove	E01022507
261	Fareham	Titchfield	E01022780
262	Basingstoke & Deane	Grove	E01022506
263	East Hampshire	Petersfield Bell Hill	E01022620
264	Basingstoke & Deane	Brighton Hill South	E01022480
265	East Hampshire	Alton Whitedown	E01022578
266	New Forest	Totton East	E01023076
267	New Forest	Totton South	E01023084
268	Winchester	Bishops Waltham	E01023223
269	Gosport	Bridgemary South	E01022804
270	Test Valley	Harroway	E01023179
271	East Hampshire	Petersfield St Marys	E01022625
272	Gosport	Christchurch	E01022810
273	New Forest	Ringwood South	E01023069
274	Eastleigh	Bursledon & Old Netley	E01022654

Rank	District	Ward	LSOA code
275	Fareham	Locks Heath	E01022753
276	Basingstoke & Deane	South Ham	E01022551
277	Rushmoor	North Town	E01023126
278	Fareham	Park Gate	E01022754
279	Havant	Emsworth	E01022924
280	Rushmoor	Mayfield	E01023119
281	Gosport	Bridgemary North	E01022802
282	New Forest	Bashley	E01022985
283	Gosport	Rowner & Holbrook	E01022842
284	Eastleigh	Eastleigh North	E01022674
285	New Forest	Pennington	E01023060
286	Test Valley	St Mary's	E01023204
287	Winchester	St John & All Saints	E01023255
288	Basingstoke & Deane	Overton, Laverstoke & Steventon	E01022534
289	East Hampshire	Bramshott & Liphook	E01022587
290	East Hampshire	Four Marks & Medstead	E01022594
291	Test Valley	Dun Valley	E01023177
292	East Hampshire	Petersfield St Peters	E01022626
293	Test Valley	Kings Sombourne & Michelmersh	E01023185
294	New Forest	Bramshaw, Copythorne North & Minstead	E01022993
295	East Hampshire	Rowlands Castle	E01022628
296	Rushmoor	Cove & Southwood	E01023091
297	Basingstoke & Deane	Brighton Hill South	E01022477
298	Rushmoor	Grange	E01023106
299	New Forest	Totton South	E01023087
300	Havant	Cowplain	E01022920
301	New Forest	Butts Ash & Dibden Purlieu	E01023003
302	Rushmoor	Mayfield	E01023122
303	Winchester	St John & All Saints	E01023257
304	Fareham	Portchester West	E01022767
305	Rushmoor	Wellington	E01023144
306	Eastleigh	Bursledon & Old Netley	E01022658
307	Rushmoor	Westheath	E01023146
308	Eastleigh	Bishopstoke West	E01022650
309	New Forest	Bransgore & Burley	E01022995
310	New Forest	Dibden & Hythe East	E01023009
311	New Forest	Ashurst, Copythorne South & Netley Marsh	E01022980
312	Havant	Cowplain	E01022923
313	Fareham	Fareham South	E01022735
314	Test Valley	Winton	E01023219
315	Fareham	Warsash	E01022792
316	Gosport	Town	E01022845
317	Basingstoke & Deane	Tadley South	E01022557
318	Test Valley	Blackwater	E01023164
319	Test Valley	Winton	E01023216
320	Basingstoke & Deane	Chineham	E01022494

Rank	District	Ward	LSOA code
321	Basingstoke & Deane	Tadley North	E01022553
322	Eastleigh	Eastleigh Central	E01022666
323	Fareham	Portchester East	E01022764
324	Eastleigh	Netley Abbey	E01022710
325	Rushmoor	Heron Wood	E01023108
326	Fareham	Portchester East	E01022762
327	Eastleigh	Bishopstoke West	E01022648
328	New Forest	Ringwood East & Sopley	E01023062
329	Havant	Hayling East	E01022938
330	Fareham	Fareham South	E01022736
331	New Forest	Holbury and North Blackfield	E01023032
332	New Forest	Hythe West and Langdown	E01023040
333	Fareham	Titchfield Common	E01022789
334	New Forest	Bashley	E01022984
335	Eastleigh	Hedge End Wildern	E01022703
336	Test Valley	Alamein	E01023155
337	Fareham	Fareham North	E01022729
338	Gosport	Privett	E01022839
339	Fareham	Fareham North	E01022727
340	Rushmoor	Empress	E01023095
341	Basingstoke & Deane	Calleva	E01022491
342	East Hampshire	Horndean Murray	E01022613
343	East Hampshire	The Hangers & Forest	E01022632
344	Winchester	Wickham	E01023285
345	East Hampshire	Headley	E01022601
346	East Hampshire	Liss	E01022617
347	New Forest	Barton	E01022981
348	Havant	Cowplain	E01022922
349	Fareham	Portchester West	E01022768
350	Rushmoor	Mayfield	E01023120
351	New Forest	Forest North West	E01023026
352	New Forest	Fernhill	E01023020
353	Havant	Waterloo	E01022971
354	Rushmoor	Heron Wood	E01023107
355	Gosport	Forton	E01022816
356	Rushmoor	Fernhill	E01023099
357	Rushmoor	Grange	E01023105
358	Eastleigh	Bursledon & Old Netley	E01022657
359	Fareham	Portchester West	E01022769
360	Hart	Frogmore & Darby Green	E01022875
361	East Hampshire	Alton Amery	E01022572
362	Gosport	Rowner & Holbrook	E01022841
363	Basingstoke & Deane	Brookvale & Kings Furlong	E01022483
364	Basingstoke & Deane	Oakley & North Waltham	E01022529
365	Havant	Purbrook	E01022951
366	Fareham	Fareham West	E01022743

Rank	District	Ward	LSOA code
367	New Forest	Fawley, Blackfield & Langley	E01023013
368	Eastleigh	Netley Abbey	E01022712
369	Fareham	Titchfield Common	E01022788
370	East Hampshire	Headley	E01022602
371	Basingstoke & Deane	Basing	E01022469
372	Basingstoke & Deane	Highclere & Bourne	E01022513
373	Winchester	St Bartholomew	E01023252
374	Fareham	Hill Head	E01022748
375	Gosport	Leesland	E01022832
376	East Hampshire	Bramshott & Liphook	E01022586
377	Rushmoor	Grange	E01023104
378	Gosport	Brockhurst	E01022808
379	Fareham	Hill Head	E01022747
380	New Forest	Hordle	E01023036
381	Havant	Hayling West	E01022944
382	New Forest	Hordle	E01023035
383	Fareham	Portchester East	E01022759
384	Havant	Purbrook	E01022948
385	Gosport	Hardway	E01022824
386	East Hampshire	Ropley & Tisted	E01022627
387	Winchester	Colden Common & Twyford	E01023227
388	Test Valley	North Baddesley	E01023193
389	Eastleigh	Hedge End Wildern	E01022700
390	Hart	Odiham	E01022889
391	Winchester	Wickham	E01023284
392	New Forest	Totton Central	E01023073
393	East Hampshire	Selbourne	E01022630
394	Basingstoke & Deane	Winklebury	E01022569
395	New Forest	Lyndhurst	E01023045
396	Fareham	Titchfield Common	E01022787
397	Winchester	St Bartholomew	E01023251
398	Gosport	Hardway	E01022825
399	Test Valley	Millway	E01023186
400	East Hampshire	Horndean Kings	E01022611
401	Hart	Fleet West	E01022871
402	New Forest	Ashurst, Copythorne South & Netley Marsh	E01022977
403	East Hampshire	Horndean Hazelton & Blendworth	E01022609
404	Havant	Waterloo	E01022974
405	Eastleigh	Hamble-le-Rice & Butlocks Heath	E01022688
406	Havant	Cowplain	E01022921
407	Eastleigh	Eastleigh Central	E01022667
408	Rushmoor	Mayfield	E01023121
409	Gosport	Leesland	E01022831
410	Fareham	Locks Heath	E01022749
411	Test Valley	Broughton & Stockbridge	E01023167
412	Fareham	Fareham East	E01022721

Rank	District	Ward	LSOA code
413	Eastleigh	Fair Oak & Horton Heath	E01022684
414	East Hampshire	Froxfield & Steep	E01022597
415	Basingstoke & Deane	Brookvale & Kings Furlong	E01022481
416	Rushmoor	Heron Wood	E01023110
417	Havant	Hart Plain	E01022930
418	Fareham	Titchfield	E01022783
419	New Forest	Bramshaw, Copythorne North & Minstead	E01022992
420	Havant	Hayling West	E01022943
421	Rushmoor	St. John's	E01023135
422	New Forest	Ringwood North	E01023067
423	Basingstoke & Deane	Whitchurch	E01022565
424	Basingstoke & Deane	Whitchurch	E01022564
425	Basingstoke & Deane	Winklebury	E01022566
426	Gosport	Lee West	E01022830
427	Eastleigh	Botley	E01022651
428	Basingstoke & Deane	Grove	E01022504
429	Hart	Yateley East	E01022890
430	Fareham	Sarisbury	E01022773
431	New Forest	Totton East	E01023078
432	New Forest	Fordingbridge	E01023021
433	East Hampshire	Clanfield & Finchdean	E01022588
434	Fareham	Fareham North-West	E01022731
435	Eastleigh	West End South	E01022718
436	Test Valley	Winton	E01023215
437	Havant	Waterloo	E01022975
438	Winchester	St Luke	E01023259
439	New Forest	Downlands & Forest	E01023012
440	Fareham	Titchfield Common	E01022785
441	Test Valley	Harroway	E01023180
442	East Hampshire	Petersfield Bell Hill	E01022619
443	Winchester	Swanmore & Newtown	E01023275
444	Gosport	Lee East	E01022827
445	Basingstoke & Deane	Hatch Warren & Beggarwood	E01022508
446	Winchester	St Michael	E01023266
447	East Hampshire	Horndean Hazelton & Blendworth	E01022610
448	New Forest	Butts Ash & Dibden Purlieu	E01023005
449	New Forest	Boldre & Sway	E01022991
450	New Forest	Lymington Town	E01023044
451	Winchester	Shedfield	E01023271
452	Gosport	Brockhurst	E01022806
453	East Hampshire	Whitehill Walldown	E01022642
454	Basingstoke & Deane	Brighton Hill North	E01022475
455	Gosport	Elson	E01022814
456	Winchester	Kings Worthy	E01023237
457	Winchester	St Barnabas	E01023249
458	New Forest	Milford	E01023053

Rank	District	Ward	LSOA code
459	Basingstoke & Deane	Tadley North	E01022555
460	Winchester	Shedfield	E01023272
461	Winchester	Olivers Battery & Badger Farm	E01023243
462	Test Valley	Chilworth, Nursling & Rownhams	E01023170
463	Rushmoor	Rowhill	E01023128
464	Fareham	Park Gate	E01022757
465	Eastleigh	Hedge End Grange Park	E01022692
466	Winchester	The Alresfords	E01023280
467	Basingstoke & Deane	Overton, Laverstoke & Steventon	E01022533
468	New Forest	Totton Central	E01023074
469	Rushmoor	St. John's	E01023132
470	Basingstoke & Deane	Baughurst	E01022472
471	New Forest	Barton	E01022983
472	Eastleigh	West End North	E01022713
473	Rushmoor	Empress	E01023098
474	Test Valley	Chilworth, Nursling & Rownhams	E01023173
475	Eastleigh	Bishopstoke East	E01022644
476	Test Valley	Cupernham	E01023174
477	Test Valley	Amport	E01023159
478	Test Valley	North Baddesley	E01023191
479	Eastleigh	Chandler's Ford East	E01022659
480	Rushmoor	Rowhill	E01023129
481	East Hampshire	Grayshott	E01022598
482	Havant	Purbrook	E01022947
483	East Hampshire	The Hangers & Forest	E01022631
484	Test Valley	Harroway	E01023182
485	Gosport	Hardway	E01022823
486	Rushmoor	North Town	E01023125
487	Gosport	Elson	E01022813
488	Gosport	Anglesey	E01022797
489	East Hampshire	Liss	E01022618
490	Test Valley	Abbey	E01023152
491	Basingstoke & Deane	Winklebury	E01022570
492	East Hampshire	Whitehill Chase	E01022633
493	Eastleigh	Fair Oak & Horton Heath	E01022685
494	Gosport	Christchurch	E01022812
495	Winchester	Droxford, Soberton & Hambledon	E01023235
496	Fareham	Locks Heath	E01022751
497	Havant	Bedhampton	E01022909
498	East Hampshire	Binsted & Bentley	E01022581
499	New Forest	Brockenhurst & Forest South East	E01022998
500	New Forest	Forest North West	E01023025
501	Basingstoke & Deane	Tadley South	E01022558
502	Winchester	The Alresfords	E01023281
503	Hart	Hartley Wintney	E01022880
504	East Hampshire	Downland	E01022591

Rank	District	Ward	LSOA code
505	Hart	Frogmore & Darby Green	E01022874
506	Winchester	Bishops Waltham	E01023222
507	Winchester	Denmead	E01023232
508	Winchester	Denmead	E01023234
509	Fareham	Fareham East	E01022722
510	Eastleigh	Fair Oak & Horton Heath	E01022683
511	Test Valley	St Mary's	E01023203
512	Basingstoke & Deane	Highclere & Bourne	E01022514
513	Gosport	Anglesey	E01022798
514	Havant	St Faith's	E01022954
515	Rushmoor	North Town	E01023127
516	East Hampshire	Horndean Catherington & Lovedean	E01022606
517	New Forest	Hythe West and Langdown	E01023038
518	Basingstoke & Deane	Burghclere	E01022489
519	Eastleigh	Fair Oak & Horton Heath	E01022686
520	Gosport	Lee West	E01022828
521	Gosport	Lee West	E01022829
522	East Hampshire	Alton Wooteys	E01022580
523	New Forest	Bransgore & Burley	E01022994
524	Rushmoor	Wellington	E01023145
525	Fareham	Sarisbury	E01022772
526	East Hampshire	Clanfield & Finchdean	E01022590
527	Basingstoke & Deane	Eastrop	E01022503
528	Fareham	Stubbington	E01022778
529	Winchester	Littleton & Harestock	E01023240
530	Test Valley	Chilworth, Nursling & Rownhams	E01023171
531	Basingstoke & Deane	Norden	E01022525
532	Gosport	Privett	E01022837
533	Rushmoor	Wellington	E01023142
534	Gosport	Peel Common	E01022836
535	East Hampshire	Headley	E01022600
536	Winchester	Swanmore & Newtown	E01023276
537	Winchester	St Paul's	E01023270
538	East Hampshire	Four Marks & Medstead	E01022595
539	East Hampshire	Four Marks & Medstead	E01022596
540	Basingstoke & Deane	Tadley North	E01022554
541	Eastleigh	Botley	E01022653
542	East Hampshire	Alton Westbrooke	E01022577
543	Fareham	Fareham West	E01022740
544	Rushmoor	St Mark's	E01023139
545	Havant	Purbrook	E01022950
546	Fareham	Hill Head	E01022745
547	Gosport	Lee East	E01022826
548	Eastleigh	Eastleigh North	E01022676
549	Test Valley	Bourne Valley	E01023165
550	Hart	Hartley Wintney	E01022879

Rank	District	Ward	LSOA code
551	Gosport	Alverstoke	E01022795
552	Fareham	Portchester East	E01022765
553	Basingstoke & Deane	Kingsclere	E01022522
554	Eastleigh	Hedge End Grange Park	E01022691
555	Test Valley	Anna	E01023161
556	Eastleigh	Chandler's Ford West	E01022665
557	Rushmoor	North Town	E01023123
558	Winchester	St Bartholomew	E01023253
559	East Hampshire	Horndean Kings	E01022612
560	Winchester	Wonston & Micheldever	E01023286
561	Fareham	Warsash	E01022791
562	Basingstoke & Deane	Sherbourne St John	E01022547
563	Rushmoor	Knellwood	E01023113
564	Test Valley	Blackwater	E01023163
565	Test Valley	Harewood	E01023178
566	Test Valley	Valley Park	E01023211
567	Eastleigh	Hedge End St John's	E01022699
568	Rushmoor	Fernhill	E01023100
569	Fareham	Fareham West	E01022741
570	Fareham	Fareham North	E01022726
571	Rushmoor	St Mark's	E01023138
572	Fareham	Stubbington	E01022776
573	Eastleigh	Chandler's Ford East	E01022661
574	East Hampshire	Bramshott & Liphook	E01022585
575	Test Valley	Cupernham	E01023175
576	Eastleigh	Bishopstoke West	E01022647
577	Eastleigh	Bishopstoke East	E01022645
578	Eastleigh	Hamble-le-Rice & Butlocks Heath	E01022689
579	Rushmoor	St Mark's	E01023140
580	Basingstoke & Deane	Chineham	E01022495
581	Winchester	Denmead	E01023233
582	Winchester	Whiteley	E01023283
583	Havant	St Faith's	E01022955
584	Basingstoke & Deane	Kingsclere	E01022521
585	Havant	Emsworth	E01022928
586	Test Valley	Tadburn	E01023209
587	Basingstoke & Deane	Pamber	E01022536
588	Fareham	Portchester West	E01022770
589	Test Valley	Millway	E01023189
590	Eastleigh	Hedge End Wildern	E01022702
591	Test Valley	Millway	E01023190
592	Basingstoke & Deane	East Woodhay	E01022500
593	Fareham	Sarisbury	E01022774
594	Basingstoke & Deane	Basing	E01022468
595	Fareham	Titchfield Common	E01022786
596	Test Valley	Valley Park	E01023213

Rank	District	Ward	LSOA code
597	Rushmoor	St Mark's	E01023137
598	East Hampshire	Whitehill Chase	E01022634
599	Fareham	Locks Heath	E01022750
600	Rushmoor	Heron Wood	E01023109
601	Hart	Fleet Courtmoor	E01022864
602	Havant	Bedhampton	E01022912
603	Rushmoor	Manor Park	E01023116
604	East Hampshire	Alton Amery	E01022571
605	Basingstoke & Deane	Calleva	E01022490
606	Havant	Emsworth	E01022926
607	Basingstoke & Deane	Calleva	E01022493
608	Eastleigh	Hedge End St John's	E01022695
609	Eastleigh	Bishopstoke East	E01022646
610	Eastleigh	Hiltingbury West	E01022708
611	Basingstoke & Deane	Chineham	E01022498
612	East Hampshire	Horndean Downs	E01022608
613	Havant	St Faith's	E01022958
614	East Hampshire	Alton Ashdell	E01022573
615	Test Valley	Ampfield & Braishfield	E01023158
616	Eastleigh	Hedge End Grange Park	E01022694
617	East Hampshire	Holybourne & Froyle	E01022604
618	Test Valley	Harroway	E01023181
619	East Hampshire	Binsted & Bentley	E01022582
620	Rushmoor	Empress	E01023096
621	Hart	Hook	E01022881
622	Eastleigh	Hedge End St John's	E01022696
623	Winchester	Olivers Battery & Badger Farm	E01023244
624	Rushmoor	Rowhill	E01023131
625	Gosport	Anglesey	E01022799
626	Winchester	Owslebury & Curdridge	E01023245
627	Test Valley	Winton	E01023217
628	Havant	Waterloo	E01022972
629	Havant	Hart Plain	E01022931
630	Basingstoke & Deane	Grove	E01022505
631	East Hampshire	Holybourne & Froyle	E01022605
632	Test Valley	Broughton & Stockbridge	E01023168
633	Winchester	Boarhunt & Southwick	E01023224
634	Hart	Cron dall	E01022855
635	Winchester	Kings Worthy	E01023238
636	Test Valley	Blackwater	E01023162
637	Hart	Yateley North	E01022894
638	Basingstoke & Deane	Overton, Laverstoke & Steventon	E01022535
639	Basingstoke & Deane	Basing	E01022470
640	Fareham	Park Gate	E01022756
641	Gosport	Brockhurst	E01022809
642	Gosport	Elson	E01022815

Rank	District	Ward	LSOA code
643	Fareham	Sarisbury	E01022771
644	Eastleigh	Bishopstoke East	E01022643
645	Test Valley	Penton Bellinger	E01023196
646	Rushmoor	Fernhill	E01023102
647	Basingstoke & Deane	Tadley South	E01022560
648	Eastleigh	Eastleigh North	E01022675
649	Basingstoke & Deane	Oakley & North Waltham	E01022531
650	East Hampshire	Grayshott	E01022599
651	Basingstoke & Deane	Tadley South	E01022559
652	Test Valley	Penton Bellinger	E01023198
653	Basingstoke & Deane	Eastrop	E01022502
654	Test Valley	Kings Sombourne & Michelmersh	E01023184
655	Hart	Blackwater & Hawley	E01022846
656	East Hampshire	Rowlands Castle	E01022629
657	Winchester	Swanmore & Newtown	E01023277
658	Winchester	Wonston & Micheldever	E01023288
659	Fareham	Hill Head	E01022744
660	Winchester	Bishops Waltham	E01023220
661	Winchester	Cheriton & Bishops Sutton	E01023225
662	Test Valley	Penton Bellinger	E01023197
663	East Hampshire	Petersfield Rother	E01022624
664	Fareham	Titchfield	E01022784
665	Basingstoke & Deane	Baughurst	E01022473
666	Winchester	St Bartholomew	E01023254
667	Basingstoke & Deane	Brighton Hill North	E01022476
668	Basingstoke & Deane	Hatch Warren & Beggarwood	E01022510
669	Eastleigh	Hiltingbury West	E01022709
670	Rushmoor	Fernhill	E01023101
671	Fareham	Warsash	E01022790
672	Eastleigh	Hedge End St John's	E01022697
673	Winchester	Littleton & Harestock	E01023241
674	Fareham	Warsash	E01022793
675	East Hampshire	Four Marks & Medstead	E01022593
676	Winchester	Kings Worthy	E01023239
677	Test Valley	Broughton & Stockbridge	E01023166
678	Test Valley	Over Wallop	E01023195
679	Eastleigh	West End South	E01022719
680	Eastleigh	Fair Oak & Horton Heath	E01022687
681	Basingstoke & Deane	Oakley & North Waltham	E01022528
682	Winchester	Olivers Battery & Badger Farm	E01023242
683	Fareham	Fareham East	E01022720
684	Test Valley	Valley Park	E01023214
685	Winchester	Sparsholt	E01023274
686	Basingstoke & Deane	Upton Grey & The Candovers	E01022562
687	Winchester	Itchen Valley	E01023236
688	Fareham	Portchester East	E01022763

Rank	District	Ward	LSOA code
689	Winchester	Compton & Otterbourne	E01023229
690	Fareham	Hill Head	E01022746
691	Fareham	Fareham North	E01022725
692	Rushmoor	North Town	E01023124
693	Basingstoke & Deane	Basing	E01022467
694	Basingstoke & Deane	Chineham	E01022496
695	Rushmoor	Manor Park	E01023117
696	Hart	Crondall	E01022856
697	Eastleigh	Hedge End St John's	E01022698
698	Test Valley	Winton	E01023218
699	Fareham	Stubbington	E01022775
700	Eastleigh	Hiltingbury West	E01022707
701	Winchester	Colden Common & Twyford	E01023226
702	Gosport	Privett	E01022838
703	Hart	Hook	E01022885
704	Basingstoke & Deane	Kempshott	E01022518
705	Basingstoke & Deane	Sherbourne St John	E01022546
706	Hart	Fleet Central	E01022862
707	Test Valley	Anna	E01023160
708	Eastleigh	Hiltingbury East	E01022704
709	Basingstoke & Deane	Upton Grey & The Candovers	E01022561
710	Eastleigh	Fair Oak & Horton Heath	E01022682
711	Hart	Blackwater & Hawley	E01022848
712	Gosport	Alverstoke	E01022794
713	Fareham	Locks Heath	E01022752
714	Test Valley	Millway	E01023188
715	Basingstoke & Deane	Whitchurch	E01022563
716	Winchester	The Alresfords	E01023279
717	Basingstoke & Deane	Oakley & North Waltham	E01022530
718	Fareham	Titchfield	E01022782
719	Eastleigh	West End North	E01022714
720	Rushmoor	Knellwood	E01023114
721	Hart	Yateley North	E01022893
722	Basingstoke & Deane	Kempshott	E01022517
723	Rushmoor	Westheath	E01023147
724	Winchester	The Alresfords	E01023278
725	Winchester	Denmead	E01023231
726	Rushmoor	St. John's	E01023134
727	Fareham	Fareham West	E01022742
728	Rushmoor	Westheath	E01023148
729	Winchester	Wonston & Micheldever	E01023287
730	Eastleigh	West End South	E01022717
731	Rushmoor	Manor Park	E01023118
732	Test Valley	Millway	E01023187
733	Winchester	St Michael	E01023263
734	Basingstoke & Deane	Hatch Warren & Beggarwood	E01022511

Rank	District	Ward	LSOA code
735	Test Valley	North Baddesley	E01023194
736	Basingstoke & Deane	Hatch Warren & Beggarwood	E01022512
737	Winchester	St Barnabas	E01023247
738	Basingstoke & Deane	Kempshott	E01022515
739	Rushmoor	Manor Park	E01023115
740	Test Valley	Charlton	E01023169
741	Basingstoke & Deane	Chineham	E01022497
742	Winchester	Owslebury & Curdridge	E01023246
743	Winchester	St Paul's	E01023269
744	Hart	Fleet North	E01022866
745	Winchester	Upper Meon Valley	E01023282
746	Hart	Yateley West	E01022897
747	Fareham	Portchester West	E01022766
748	Winchester	Compton & Otterbourne	E01023230
749	Winchester	St Michael	E01023265
750	Winchester	St Michael	E01023264
751	Hart	Yateley North	E01022895
752	Rushmoor	St. John's	E01023133
753	Winchester	St Paul's	E01023267
754	Eastleigh	Chandler's Ford West	E01022664
755	Eastleigh	Hiltingbury East	E01022705
756	Basingstoke & Deane	Pamber	E01022537
757	Hart	Fleet North	E01022867
758	Basingstoke & Deane	Calleva	E01022492
759	Eastleigh	Chandler's Ford West	E01022663
760	Basingstoke & Deane	Kempshott	E01022516
761	Hart	Blackwater & Hawley	E01022847
762	Hart	Frogmore & Darby Green	E01022877
763	Test Valley	Valley Park	E01023210
764	Test Valley	Chilworth, Nursling & Rownhams	E01023172
765	Hart	Hook	E01022882
766	Eastleigh	Hiltingbury East	E01022706
767	Hart	Fleet Pondtail	E01022869
768	Winchester	St Paul's	E01023268
769	Rushmoor	Westheath	E01023149
770	Test Valley	Valley Park	E01023212
771	Basingstoke & Deane	Hatch Warren & Beggarwood	E01022509
772	Basingstoke & Deane	East Woodhay	E01022499
773	Test Valley	Romsey Extra	E01023200
774	Eastleigh	Chandler's Ford West	E01022662
775	Basingstoke & Deane	Basing	E01022471
776	Eastleigh	Hedge End Grange Park	E01022693
777	Basingstoke & Deane	Kempshott	E01022519
778	Test Valley	Tadburn	E01023207
779	Basingstoke & Deane	Oakley & North Waltham	E01022532
780	Hart	Church Crookham West	E01022852

Rank	District	Ward	LSOA code
781	Hart	Fleet Courtmoor	E01022863
782	Winchester	Shedfield	E01023273
783	Hart	Hook	E01022884
784	Winchester	Colden Common & Twyford	E01023228
785	Hart	Eversley	E01022858
786	Hart	Church Crookham East	E01022849
787	Hart	Fleet Central	E01022860
788	Hart	Church Crookham East	E01022851
789	Hart	Yateley East	E01022892
790	Rushmoor	Grange	E01023103
791	Hart	Frogmore & Darby Green	E01022876
792	Hart	Fleet Pondtail	E01022870
793	Hart	Church Crookham West	E01022854
794	Hart	Hook	E01022883
795	Rushmoor	Empress	E01023097
796	Gosport	Alverstoke	E01022796
797	Rushmoor	Rowhill	E01023130
798	Rushmoor	Cove & Southwood	E01023094
799	Rushmoor	Knellwood	E01023112
800	Winchester	St Barnabas	E01023248
801	Hart	Crondall	E01022857
802	Rushmoor	St Mark's	E01023136
803	Hart	Yateley East	E01022891
804	Rushmoor	Wellington	E01023141
805	Hart	Yateley West	E01022898
806	Rushmoor	Wellington	E01023143
807	Hart	Yateley West	E01022896
808	Rushmoor	Cove & Southwood	E01023092
809	Hart	Fleet West	E01022873
810	Hart	Odiham	E01022888
811	Hart	Long Sutton	E01022886
812	Hart	Fleet West	E01022872
813	Hart	Fleet Pondtail	E01022868
814	Hart	Church Crookham East	E01022850
815	Hart	Hartley Wintney	E01022878
816	Hart	Fleet Central	E01022861
817	Hart	Church Crookham West	E01022853
818	Hart	Odiham	E01022887
819	Hart	Eversley	E01022859
820	Rushmoor	Knellwood	E01023111
821	Rushmoor	Cove & Southwood	E01023093
822	Hart	Fleet Courtmoor	E01022865