

A Comparison of
the 2011 Census
and 2011 SAPF
for Hampshire

2011

Summary

A comparison between the 2011 Census results and 2011 Small Area Population Forecasts (SAPF) shows:

- In Hampshire overall, the SAPF estimates were 1.2 % different to the 2011 Census results.
- In Hampshire County the difference was smaller at 1.1 %.
- SAPF underestimated the total population of Hampshire in 2011 by 22,000 people.
- Most variation between the 2011 Census and 2011 SAPF was in the young adult and older age groups.
- SAPF estimated there to be a larger number of people aged 85 and over in all of Hampshire's districts than the 2011 Census found there were.

Introduction

The aim of this report is to highlight the similarities and differences between the 2011 Census results and Hampshire County Council's 2011-based Small Area Population Forecasts (SAPF).

The Census is conducted every ten years. In-between censuses it is necessary to rely on other data sources for annual estimates of the population. The release of the 2011 Census results provides an opportunity to assess the accuracy of these estimates.

This report compares the first release 2011 Census county and district results with Hampshire County Council's 2011-based Small Area Population Forecasts. The forecasts provide estimates of the population of Hampshire from 2011-2018 and are available for all districts down to ward level broken down by age and gender.

The first release of the 2011 Census results can be found at the following location:

www.hants.gov.uk/census2011

SAPF data can be found at the following location:

<http://www3.hants.gov.uk/planning/factsandfigures/population-statistics/small-area-pop-stats.htm>

The first release of the 2011 Census results are limited to population estimates by five year age bands for local authorities, together with household estimates and estimates of short term migrants. More detailed results for lower geographic areas are expected in further releases, from November 2012. Once more detailed 2011 Census results are published, they will be compared with SAPF at lower geographic areas, to try to further understand the differences and similarities.

The findings of this report will be used to validate the quality of the SAPF model and to explore potential improvements, once more detailed 2011 Census data is released.

Population Totals

Table 1: Population Totals, Number and Percentage Difference between 2011 Census and 2011 SAPF

Area	2011 Census Population Totals	2011 SAPF Population Totals	Number Difference	Percentage Difference
Portsmouth	205,100	199,644	-5,456	-2.66
Southampton	236,900	235,329	-1,571	-0.66
Southampton (Alternative SAPF)	236,900	238,763	1,863	0.79
Basingstoke and Deane	167,800	167,291	-509	-0.30
East Hampshire	115,600	113,166	-2,434	-2.11
Eastleigh	125,200	123,447	-1,753	-1.40
Fareham	111,600	111,253	-347	-0.31
Gosport	82,600	80,128	-2,472	-2.99
Hart	91,000	88,692	-2,308	-2.54
Havant	120,700	116,700	-4,000	-3.31
New Forest	176,500	174,372	-2,128	-1.21
Rushmoor	93,800	96,745	2,945	3.14
Test Valley	116,400	114,058	-2,342	-2.01
Winchester	116,600	117,134	534	0.46
Hampshire County	1,317,800	1,302,986	-14,814	-1.12
Hampshire including Portsmouth and Southampton	1,759,800	1,737,959	-21,841	-1.24

SAPF estimated there to be fewer people in Hampshire and Hampshire County than the 2011 Census found there were with a percentage difference of just over 1 % between the two sources.

At district level, the largest number difference is 5,460 in Portsmouth, whilst the smallest is 350 in Fareham. Percentage wise, for four districts the difference between 2011 Census and SAPF is marginal at less than 1 %. A slightly larger difference is seen in Havant and Rushmoor (over 3 %).

Alternative SAPF figures were carried out for Southampton that incorporate different input data to that used in the main set of SAPF estimates. The main Southampton SAPF figure and the Alternative figure fall either side of the 2011 Census figure.

The following sections analyse the differences and similarities for Hampshire, Hampshire County, and each district.

Hampshire (including Portsmouth and Southampton)

Table 2: Hampshire including Portsmouth and Southampton: Number and Percentage Difference between 2011 Census and 2011 SAPF

Age Group	2011 Census	2011 SAPF	Number Difference	Percentage Difference
0 – 4	106,200	107,957	1,757	1.65
5 – 9	96,100	98,051	1,951	2.03
10 – 14	101,300	99,734	-1,566	-1.55
15 – 19	113,900	114,338	438	0.38
20 – 24	123,500	123,712	212	0.17
25 – 29	109,900	105,509	-4,391	-4.00
30 – 34	106,500	101,846	-4,654	-4.37
35 – 39	115,700	113,252	-2,448	-2.12
40 – 44	127,400	125,865	-1,535	-1.20
45 – 49	132,500	127,701	-4,799	-3.62
50 – 54	116,300	112,470	-3,830	-3.29
55 – 59	99,800	98,263	-1,537	-1.54
60 – 64	108,800	104,851	-3,949	-3.63
65 – 69	86,900	84,056	-2,844	-3.27
70 – 74	69,300	68,055	-1,245	-1.80
75 – 79	57,600	57,376	-224	-0.39
80 – 84	44,500	45,777	1,277	2.87
85+	43,300	49,142	5,842	13.49
Total Population	1,759,800	1,737,959	-21,841	-1.24

Figure 2a: Female Population in Five Year Age Groups, 2011 Census and 2011 SAPF, Hampshire including Portsmouth and Southampton

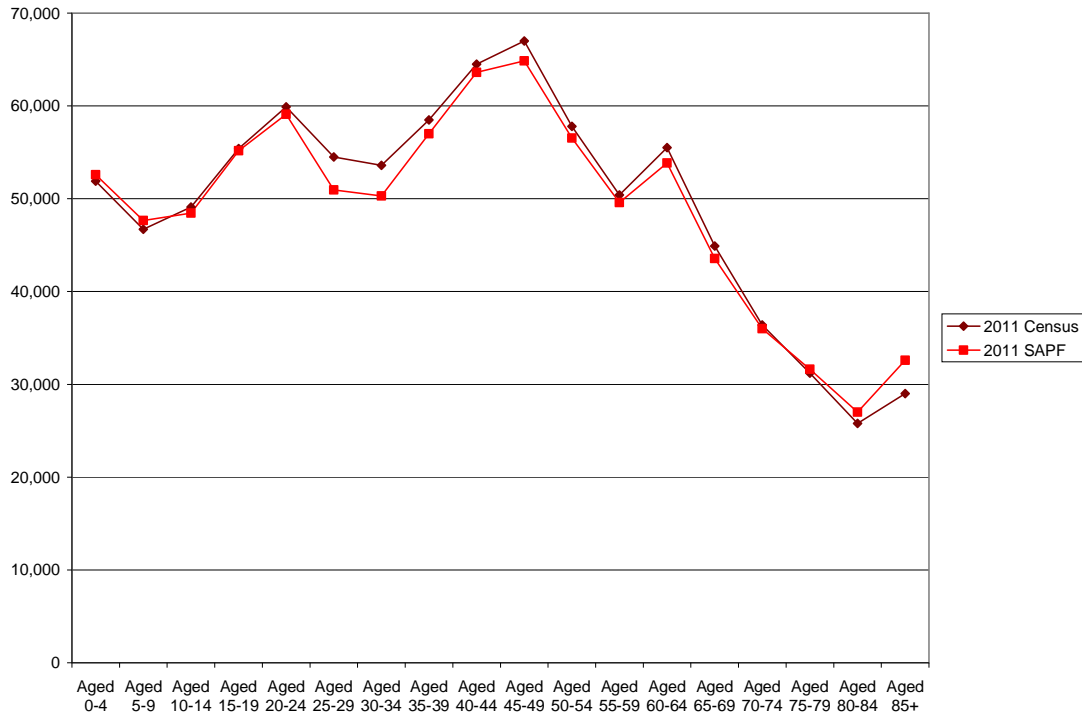


Figure 1b: Male Population in Five Year Age Groups, 2011 Census and 2011 SAPF, Hampshire including Portsmouth and Southampton

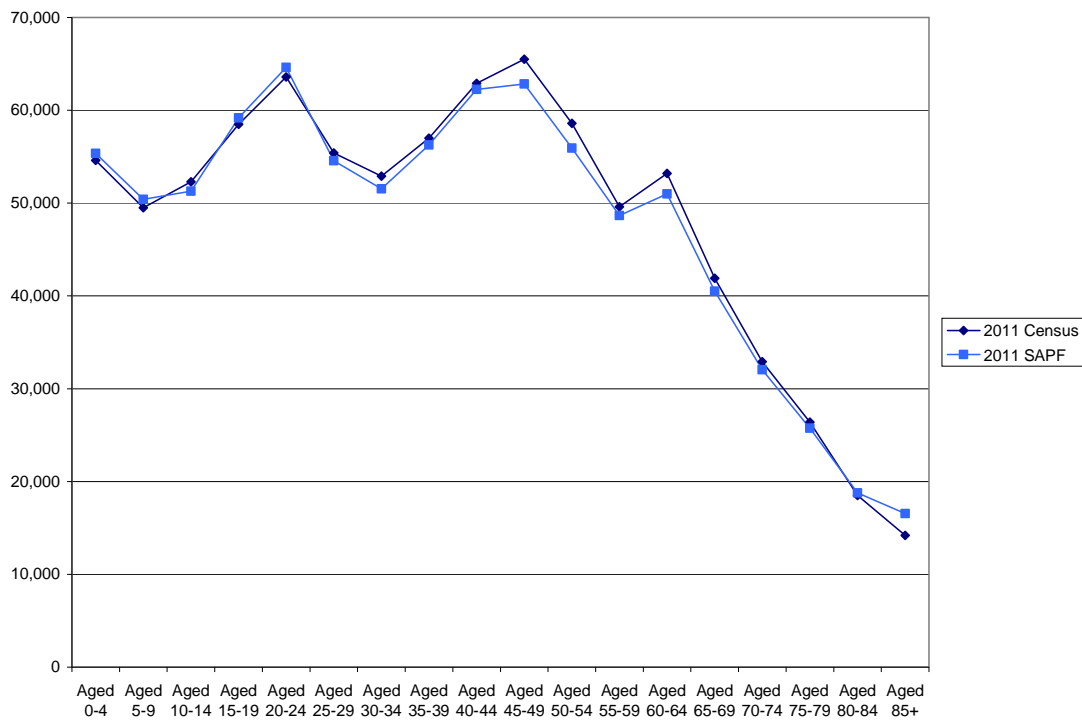


Table 2 and Figures 1a and b show that SAPF estimated there to be a larger number of males and females in the youngest and oldest age groups (0-9 and 80 and over). In the

majority of other age groups, the 2011 Census contained a larger number of people. The figures for females aged in their 20s and 30s have the largest percentage difference where SAPF estimated fewer numbers (25-29 age group has 6.5 % fewer females in SAPF than Census), whilst males aged 85 and over has the largest percentage difference where SAPF estimated higher numbers (16.5 %).

Hampshire County

Table 3: Hampshire County: Number and Percentage Difference between 2011 Census and 2011 SAPF

Age Group	2011 Census	2011 SAPF	Number Difference	Percentage Difference
0 – 4	77,300	78,485	1,185	1.53
5 – 9	73,300	75,315	2,015	2.75
10 – 14	78,900	78,210	-690	-0.87
15 – 19	80,000	83,176	3,176	3.97
20 – 24	71,300	74,317	3,017	4.23
25 – 29	71,100	71,988	888	1.25
30 – 34	74,000	72,294	-1,706	-2.31
35 – 39	86,600	84,412	-2,188	-2.53
40 – 44	98,500	97,184	-1,316	-1.34
45 – 49	103,900	99,995	-3,905	-3.76
50 – 54	91,700	88,773	-2,927	-3.19
55 – 59	79,700	77,704	-1,996	-2.50
60 – 64	88,100	83,047	-5,053	-5.74
65 – 69	70,600	65,988	-4,612	-6.53
70 – 74	56,300	53,409	-2,891	-5.13
75 – 79	46,500	45,020	-1,480	-3.18
80 – 84	35,700	35,649	-51	-0.14
85+	34,200	38,017	3,817	11.16
Total Population	1,317,800	1,302,986	-14,814	-1.12

Figure 2a: Female Population in Five Year Age Groups, 2011 Census and 2011 SAPF, Hampshire County

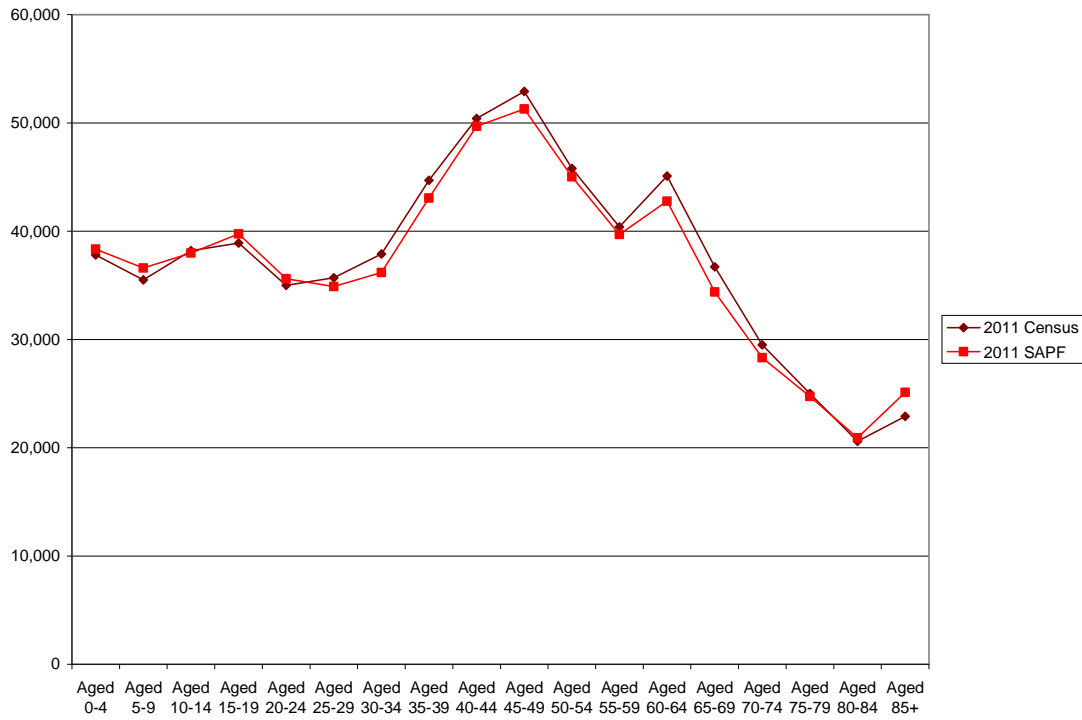


Figure 2b: Male Population in Five Year Age Groups, 2011 Census and 2011 SAPF, Hampshire County

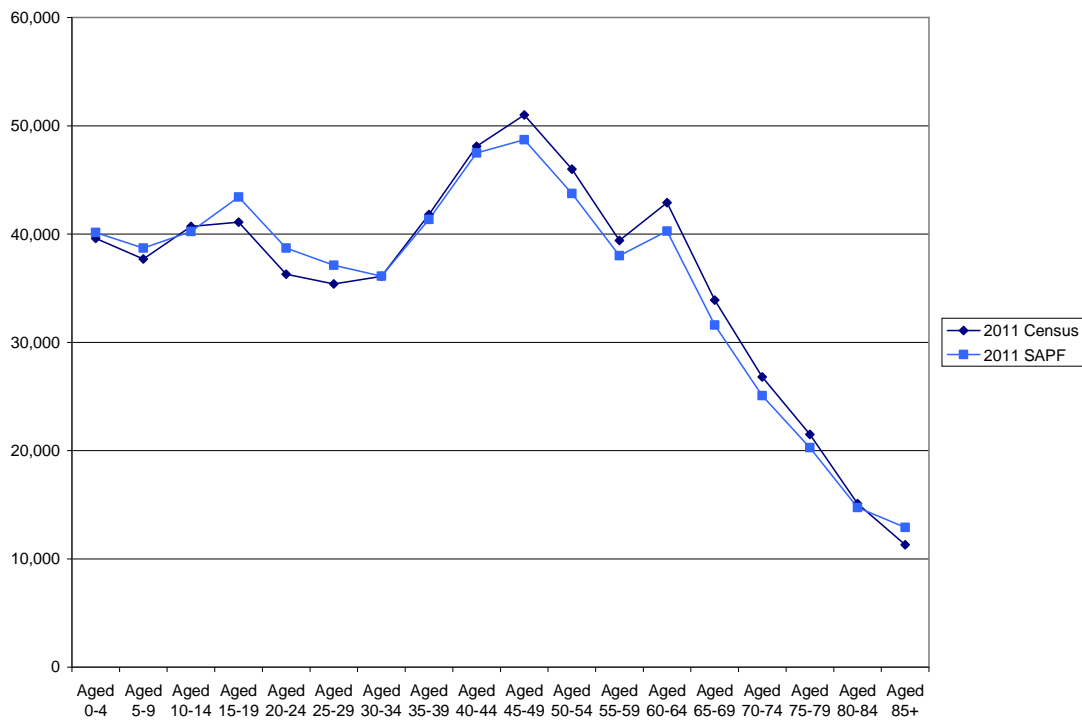


Table 3 and Figures 2a and b show that SAPF estimated there to be a larger number of males and females in the majority of age groups up to 29 years and in the oldest age

group (85 and over). In the majority of other age groups, the 2011 Census contained a larger number of people. The figures for males aged in their 60s and 70s have the largest percentage difference where SAPF estimated fewer numbers (65-69 age group has 6.8 % fewer females in SAPF than Census), whilst males aged 85 and over has the largest percentage difference where SAPF estimated higher numbers (14 %).

Portsmouth

Table 4: Portsmouth: Number and Percentage Difference between 2011 Census and 2011 SAPF

Age Group	2011 Census	2011 SAPF	Number Difference	Percentage Difference
0 – 4	13,500	13,316	-184	-1.36
5 – 9	11,000	10,659	-341	-3.10
10 – 14	10,900	10,299	-601	-5.51
15 – 19	16,000	14,009	-1,991	-12.44
20 – 24	22,800	19,151	-3,649	-16.00
25 – 29	17,000	14,902	-2,098	-12.34
30 – 34	13,900	13,946	46	0.33
35 – 39	13,400	13,823	423	3.16
40 – 44	14,300	13,828	-472	-3.30
45 – 49	13,800	13,267	-533	-3.86
50 – 54	11,900	11,200	-700	-5.88
55 – 59	9,300	9,340	40	0.43
60 – 64	9,800	10,172	372	3.80
65 – 69	7,700	8,518	818	10.62
70 – 74	6,200	7,032	832	13.42
75 – 79	5,200	5,819	619	11.90
80 – 84	4,000	4,740	740	18.50
85+	4,400	5,623	1,223	27.80
Total Population	205,100	199,644	-5,456	-2.66

Figure 3: Population in Five Year Age Groups, 2011 Census and 2011 SAPF, Portsmouth

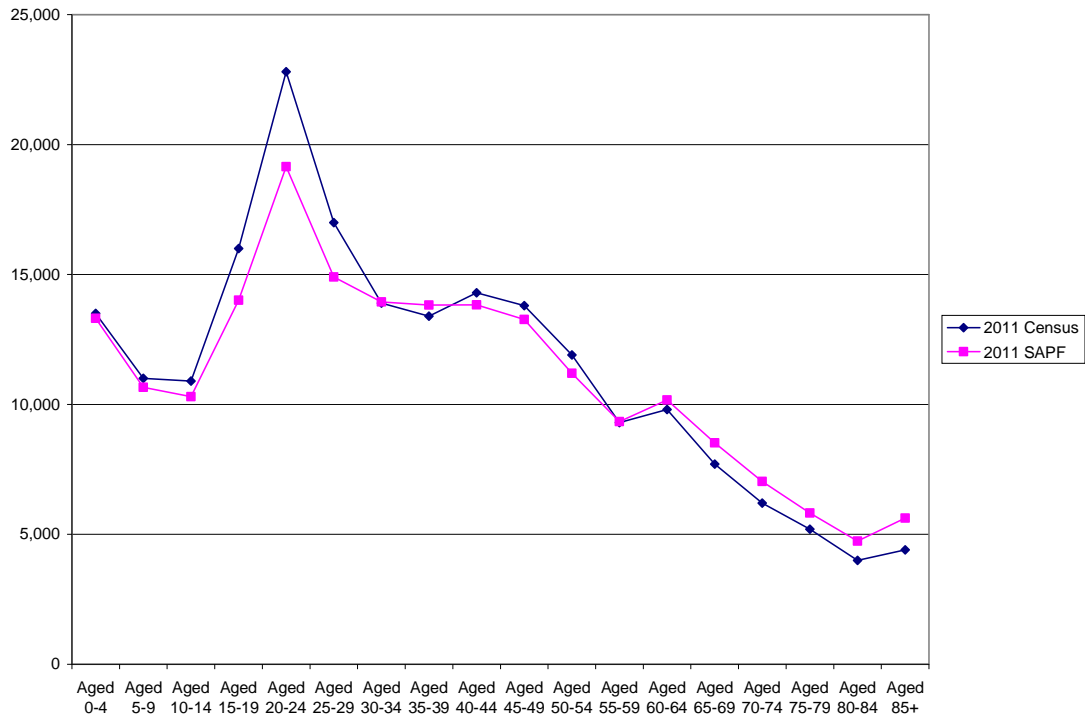


Table 4 and Figure 3 shows that the largest number variation between 2011 Census and SAPF is for those aged 20-24 (3,650 people), whilst the largest percentage difference is for those aged 85 and over (28 %).

Southampton

Table 5: Southampton: Number and Percentage Difference between 2011 Census and 2011 SAPF

Age Group	2011 Census	2011 SAPF	Number Difference	Percentage Difference
0 – 4	15,400	16,156	756	4.91
5 – 9	11,800	12,077	277	2.35
10 – 14	11,500	11,225	-275	-2.39
15 – 19	17,900	17,153	-747	-4.17
20 – 24	29,400	30,244	844	2.87
25 – 29	21,800	18,619	-3,181	-14.59
30 – 34	18,600	15,606	-2,994	-16.10
35 – 39	15,700	15,017	-683	-4.35
40 – 44	14,600	14,853	253	1.73
45 – 49	14,800	14,439	-361	-2.44
50 – 54	12,700	12,497	-203	-1.60
55 – 59	10,800	11,219	419	3.88
60 – 64	10,900	11,632	732	6.72
65 – 69	8,600	9,550	950	11.05
70 – 74	6,800	7,614	814	11.97
75 – 79	5,900	6,537	637	10.80
80 – 84	4,800	5,388	588	12.25
85+	4,700	5,502	802	17.06
Total Population	236,900	235,329	-1,571	-0.66

Figure 4: Population in Five Year Age Groups, 2011 Census and 2011 SAPF, Southampton

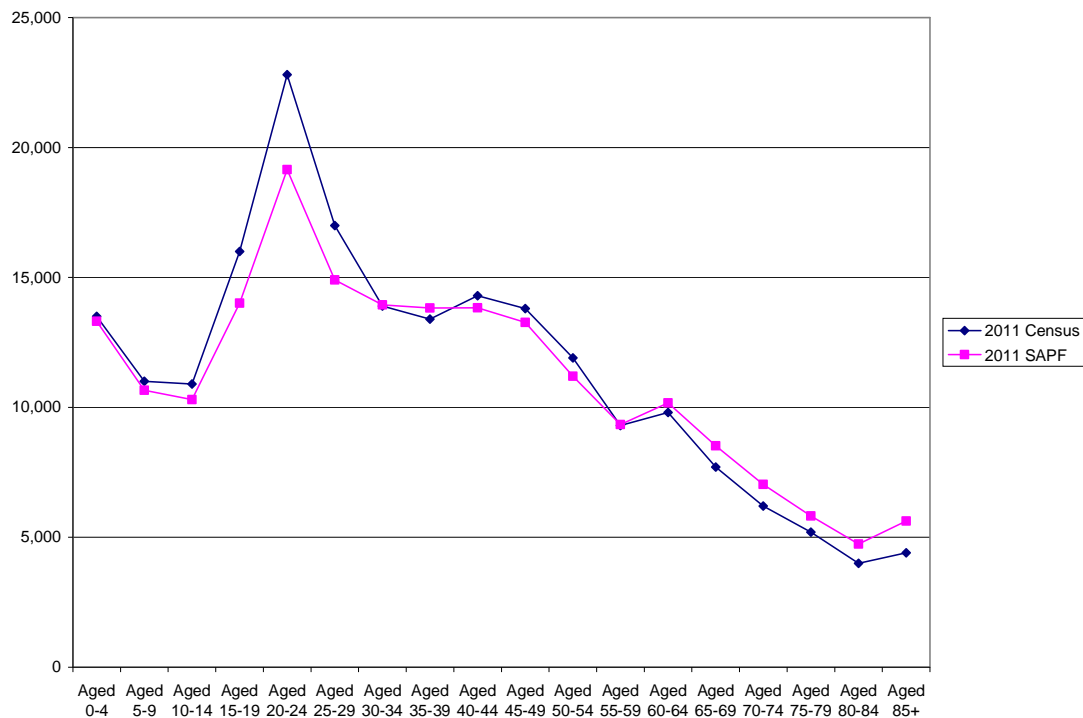
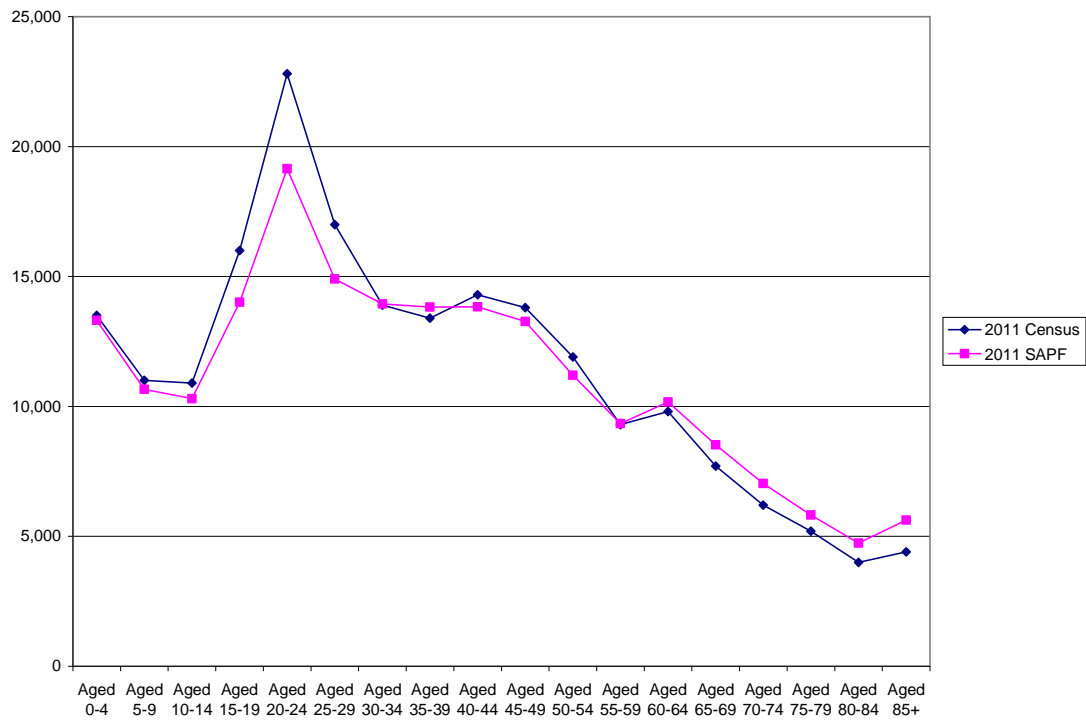


Table 5 and Figure 4 show that the most number variation between the 2011 Census and SAPF occurs in the 25-29 age group (3,180) and largest percentage difference is in the 30-34 age group (16 %).

Table 6: Southampton: Number and Percentage Difference between 2011 Census and 2011 Alternative SAPF

Age Group	2011 Census	2011 SAPF	Number Difference	Percentage Difference
0 – 4	15,400	16,156	756	4.91
5 – 9	11,800	12,306	506	4.29
10 – 14	11,500	11,740	240	2.09
15 – 19	17,900	17,365	-535	-2.99
20 – 24	29,400	31,264	1864	6.34
25 – 29	21,800	20,618	-1,182	-5.42
30 – 34	18,600	17,265	-1,335	-7.18
35 – 39	15,700	16,275	575	3.66
40 – 44	14,600	15,124	524	3.59
45 – 49	14,800	13,679	-1,121	-7.57
50 – 54	12,700	11,684	-1,016	-8.00
55 – 59	10,800	10,653	-147	-1.36
60 – 64	10,900	11,137	237	2.17
65 – 69	8,600	9,221	621	7.22
70 – 74	6,800	7,372	572	8.41
75 – 79	5,900	6,344	444	7.53
80 – 84	4,800	5,233	433	9.02
85+	4,700	5,326	626	13.32
Total Population	236,900	238,763	1,863	0.79

Figure 5: Population in Five Year Age Groups, 2011 Census and 2011 Alternative SAPF, Southampton



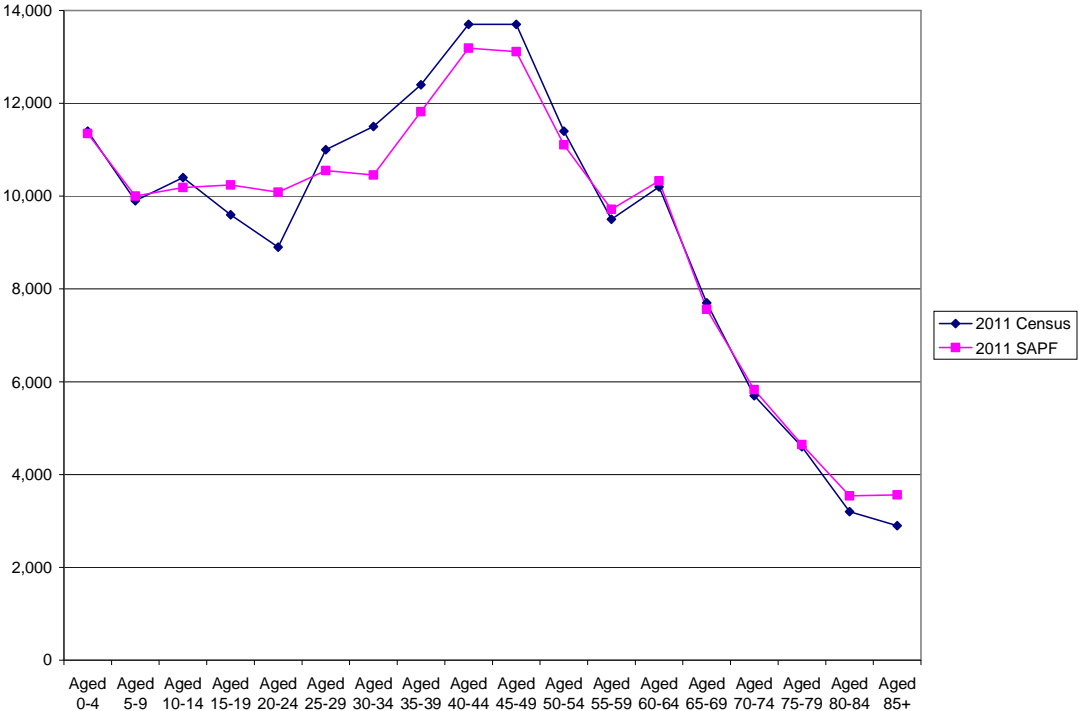
The Southampton Alternative SAPF data has larger numbers in the majority of age groups. Most number variation occurs in the young adult age groups (20-34) and older age groups (65 and over) (Table 6 and Figure 5).

Basingstoke and Deane

Table 7: Basingstoke and Deane: Number and Percentage Difference between 2011 Census and 2011 SAPF

Age Group	2011 Census	2011 SAPF	Number Difference	Percentage Difference
0 – 4	11,400	11,350	-50	-0.44
5 – 9	9,900	10,001	101	1.02
10 – 14	10,400	10,186	-214	-2.06
15 – 19	9,600	10,240	640	6.67
20 – 24	8,900	10,084	1,184	13.30
25 – 29	11,000	10,553	-447	-4.06
30 – 34	11,500	10,454	-1,046	-9.10
35 – 39	12,400	11,822	-578	-4.66
40 – 44	13,700	13,190	-510	-3.72
45 – 49	13,700	13,114	-586	-4.28
50 – 54	11,400	11,108	-292	-2.56
55 – 59	9,500	9,716	216	2.27
60 – 64	10,200	10,330	130	1.27
65 – 69	7,700	7,560	-140	-1.82
70 – 74	5,700	5,832	132	2.32
75 – 79	4,600	4,646	46	1.00
80 – 84	3,200	3,543	343	10.72
85+	2,900	3,563	663	22.86
Total Population	167,800	167,291	-509	-0.30

Figure 6: Population in Five Year Age Groups, 2011 Census and SAPF 2011, Basingstoke and Deane



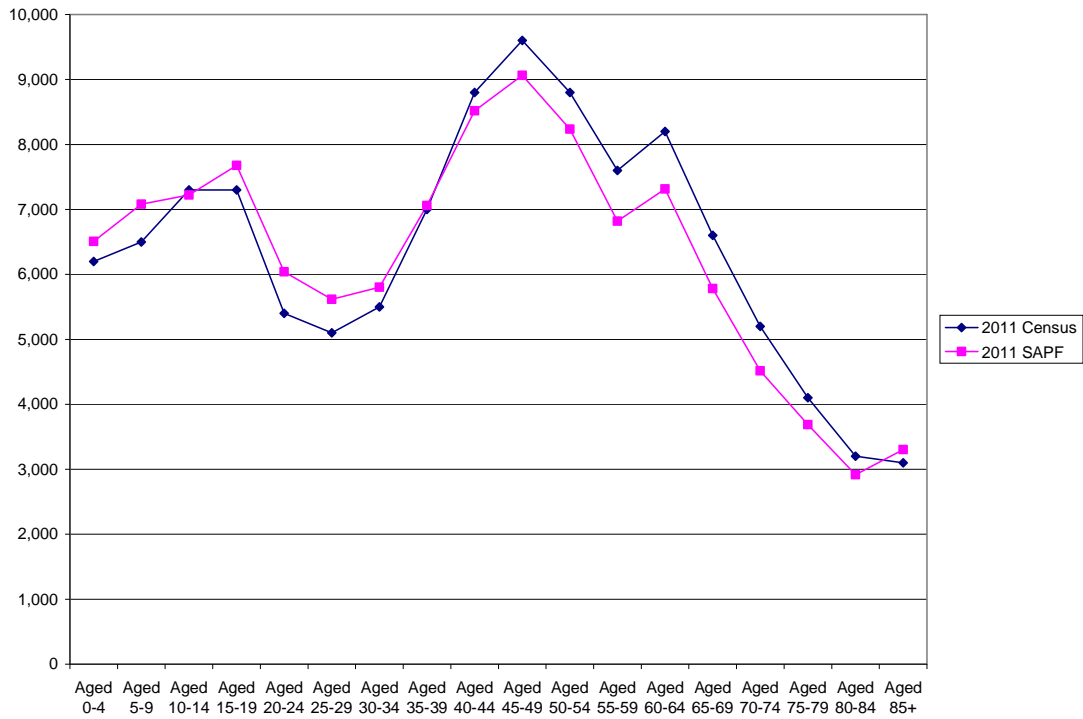
Basingstoke and Deane has the smallest overall percentage difference of any district, with 0.3 %. The largest variation in numbers is for those aged 20-24, with 1,180 more people in the 2011 SAPF. The largest percentage difference is for those aged 85 and over, with 23 % (Table 7 and Figure 6).

East Hampshire

Table 8: East Hampshire: Number and Percentage Difference between 2011 Census and 2011 SAPF

Age Group	2011 Census	2011 SAPF	Number Difference	Percentage Difference
0 – 4	6,200	6,509	309	4.98
5 – 9	6,500	7,080	580	8.92
10 – 14	7,300	7,223	-77	-1.05
15 – 19	7,300	7,677	377	5.16
20 – 24	5,400	6,041	641	11.87
25 – 29	5,100	5,617	517	10.14
30 – 34	5,500	5,802	302	5.49
35 – 39	7,000	7,061	61	0.87
40 – 44	8,800	8,518	-282	-3.20
45 – 49	9,600	9,063	-537	-5.59
50 – 54	8,800	8,237	-563	-6.40
55 – 59	7,600	6,819	-781	-10.28
60 – 64	8,200	7,315	-885	-10.79
65 – 69	6,600	5,783	-817	-12.38
70 – 74	5,200	4,516	-684	-13.15
75 – 79	4,100	3,688	-412	-10.05
80 – 84	3,200	2,917	-283	-8.84
85+	3,100	3,302	202	6.52
Total Population	115,600	113,166	-2,434	-2.11

Figure 7: Population in Five Year Age Groups, 2011 Census and SAPF 2011, East Hampshire



The figures for East Hampshire are largely split down the middle of the age groups, with a larger number in SAPF for those aged under 40 and a smaller number in SAPF for those aged over 40. The largest number difference is 890 for those aged 60-64. The largest percentage difference is 13 % for those aged 70-74 years (Table 8 and Figure 7).

Eastleigh

Table 9: Eastleigh: Number and Percentage Difference between 2011 Census and 2011 SAPF

Age Group	2011 Census	2011 SAPF	Number Difference	Percentage Difference
0 – 4	7,700	7,749	49	0.64
5 – 9	7,000	7,088	88	1.26
10 – 14	7,400	7,474	74	1.00
15 – 19	7,500	8,002	502	6.69
20 – 24	7,200	7,357	157	2.18
25 – 29	7,300	7,334	34	0.47
30 – 34	7,900	7,143	-757	-9.58
35 – 39	8,600	8,135	-465	-5.41
40 – 44	9,400	9,284	-116	-1.23
45 – 49	9,800	9,772	-28	-0.29
50 – 54	8,900	8,845	-55	-0.62
55 – 59	7,600	7,676	76	1.00
60 – 64	8,100	7,603	-497	-6.14
65 – 69	6,000	5,762	-238	-3.97
70 – 74	5,000	4,682	-318	-6.36
75 – 79	4,000	3,701	-299	-7.48
80 – 84	3,100	2,994	-106	-3.42
85+	2,800	2,844	44	1.57
Total Population	125,200	123,447	-1,753	-1.40

Figure 8: Population in Five Year Age Groups, 2011 Census and SAPF 2011, Eastleigh

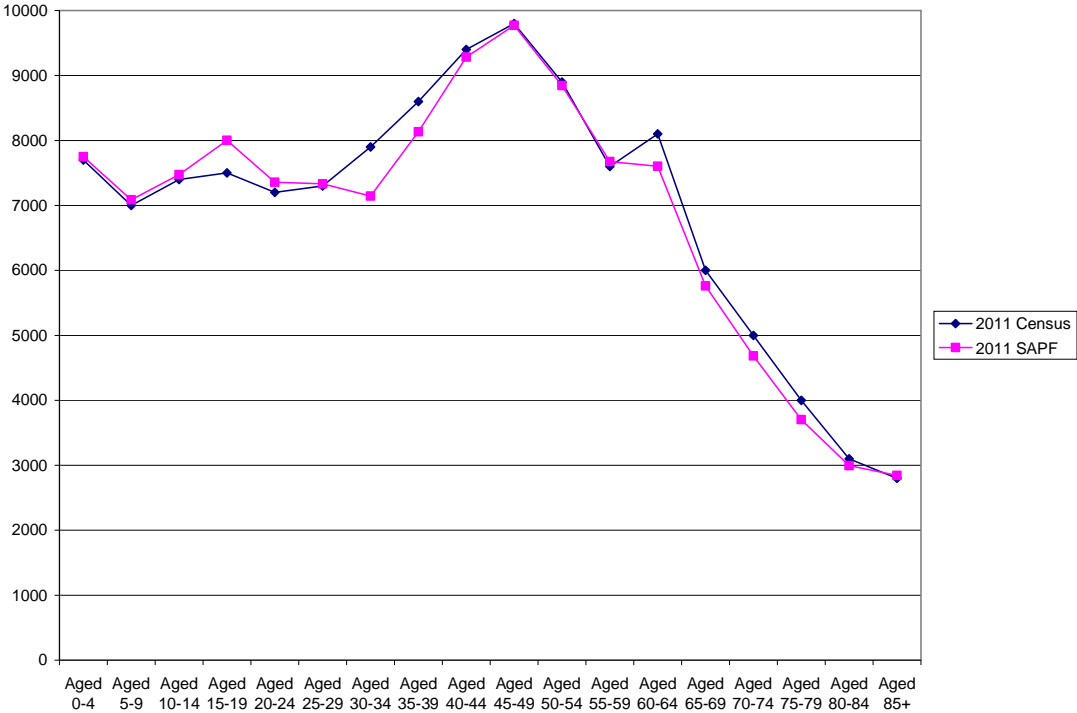


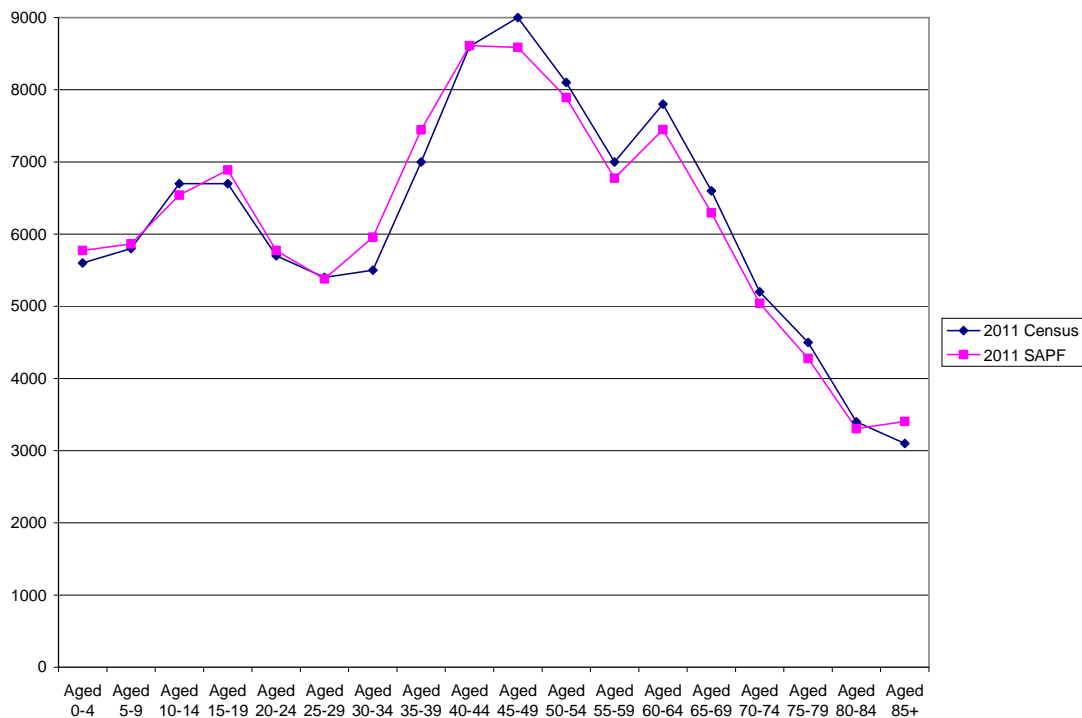
Table 9 and Figure 8 show that SAPF estimated there to be more people aged under 30 than the 2011 Census. The largest number and percentage difference was for the 30-34 age group with 760 more people (10 %) in the Census than SAPF.

Fareham

Table 10: Fareham: Number and Percentage Difference between 2011 Census and 2011 SAPF

Age Group	2011 Census	2011 SAPF	Number Difference	Percentage Difference
0 – 4	5,600	5,772	172	3.07
5 – 9	5,800	5,865	65	1.12
10 – 14	6,700	6,540	-160	-2.39
15 – 19	6,700	6,889	189	2.82
20 – 24	5,700	5,772	72	1.26
25 – 29	5,400	5,379	-21	-0.39
30 – 34	5,500	5,956	456	8.29
35 – 39	7,000	7,444	444	6.34
40 – 44	8,600	8,611	11	0.13
45 – 49	9,000	8,588	-412	-4.58
50 – 54	8,100	7,890	-210	-2.59
55 – 59	7,000	6,774	-226	-3.23
60 – 64	7,800	7,447	-353	-4.53
65 – 69	6,600	6,295	-305	-4.62
70 – 74	5,200	5,042	-158	-3.04
75 – 79	4,500	4,277	-223	-4.96
80 – 84	3,400	3,304	-96	-2.82
85+	3,100	3,406	306	9.87
Total Population	111,600	111,253	-347	-0.31

Figure 9: Population in Five Year Age Groups, 2011 Census and SAPF 2011, Fareham



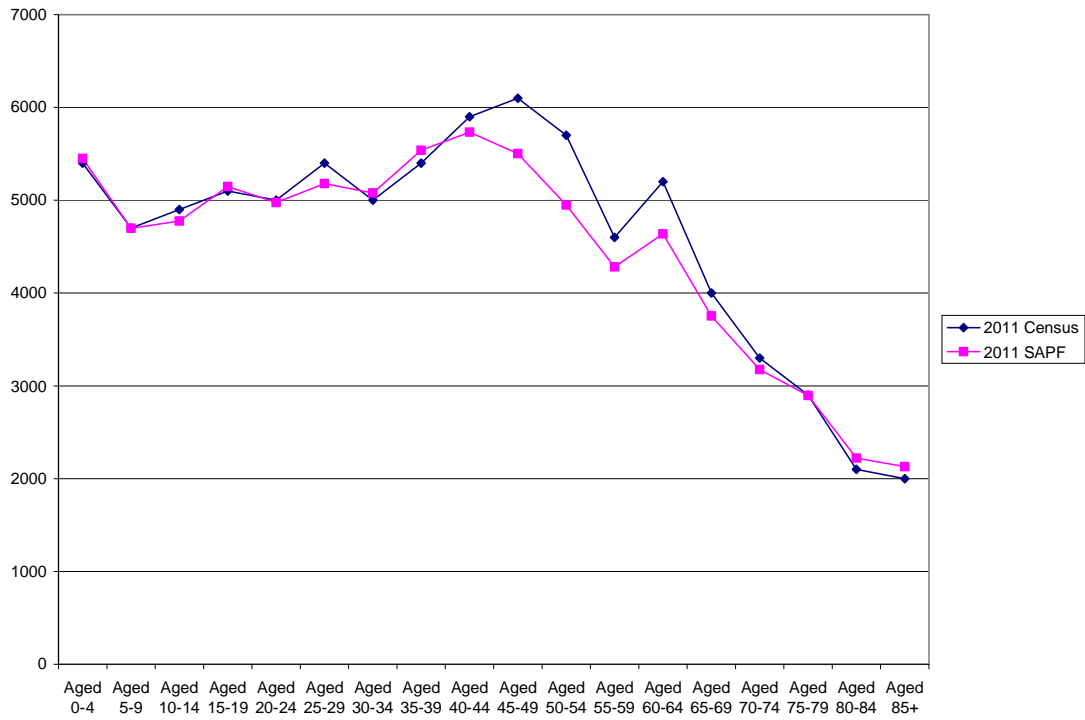
The number difference in the total population between the Census and SAPF was smallest in Fareham, with just 350 more people in the Census than SAPF. Among the age groups, the most variation was in those aged 30-34, with 460 more people estimated in SAPF. The largest percentage difference was for those aged 85 and over (10 %) (Table 10 and Figure 9).

Gosport

Table 11: Gosport: Number and Percentage Difference between 2011 Census and 2011 SAPF

Age Group	2011 Census	2011 SAPF	Number Difference	Percentage Difference
0 – 4	5,400	5,450	50	0.93
5 – 9	4,700	4,699	-1	-0.02
10 – 14	4,900	4,776	-124	-2.53
15 – 19	5,100	5,147	47	0.92
20 – 24	5,000	4,976	-24	-0.48
25 – 29	5,400	5,180	-220	-4.07
30 – 34	5,000	5,078	78	1.56
35 – 39	5,400	5,538	138	2.56
40 – 44	5,900	5,734	-166	-2.81
45 – 49	6,100	5,502	-598	-9.80
50 – 54	5,700	4,949	-751	-13.18
55 – 59	4,600	4,283	-317	-6.89
60 – 64	5,200	4,638	-562	-10.81
65 – 69	4,000	3,753	-247	-6.18
70 – 74	3,300	3,176	-124	-3.76
75 – 79	2,900	2,897	-3	-0.10
80 – 84	2,100	2,221	121	5.76
85+	2,000	2,130	130	6.50
Total Population	82,600	80,128	-2,472	-2.99

Figure 10: Population in Five Year Age Groups, 2011 Census and SAPF 2011, Gosport



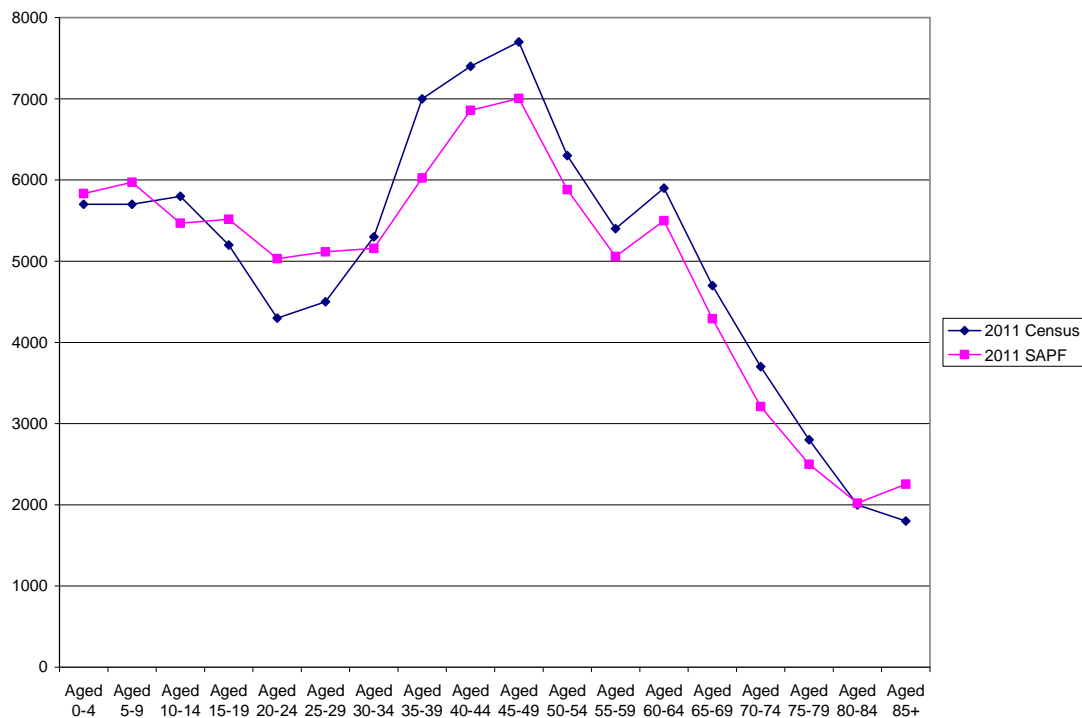
In Gosport, the 2011 Census and 2011 SAPF follow a similar pattern for the younger age groups. There is more variation for those aged 40-65 and again in the oldest age groups. The largest number and percentage difference is for those aged 50-54 (13 %) (Table 11 and Figure 12).

Hart

Table 12: Hart: Number and Percentage Difference between 2011 Census and 2011 SAPF

Age Group	2011 Census	2011 SAPF	Number Difference	Percentage Difference
0 – 4	5700	5832	132	2.32
5 – 9	5700	5972	272	4.77
10 – 14	5800	5468	-332	-5.72
15 – 19	5200	5516	316	6.08
20 – 24	4300	5032	732	17.02
25 – 29	4500	5115	615	13.67
30 – 34	5300	5159	-141	-2.66
35 – 39	7000	6025	-975	-13.93
40 – 44	7400	6857	-543	-7.34
45 – 49	7700	7004	-696	-9.04
50 – 54	6300	5881	-419	-6.65
55 – 59	5400	5057	-343	-6.35
60 – 64	5900	5498	-402	-6.81
65 – 69	4700	4292	-408	-8.68
70 – 74	3700	3208	-492	-13.30
75 – 79	2800	2499	-301	-10.75
80 – 84	2000	2021	21	1.05
85+	1800	2254	454	25.22
Total Population	91000	88692	-2,308	-2.54

Figure 11: Population in Five Year Age Groups, 2011 Census and SAPF 2011, Hart



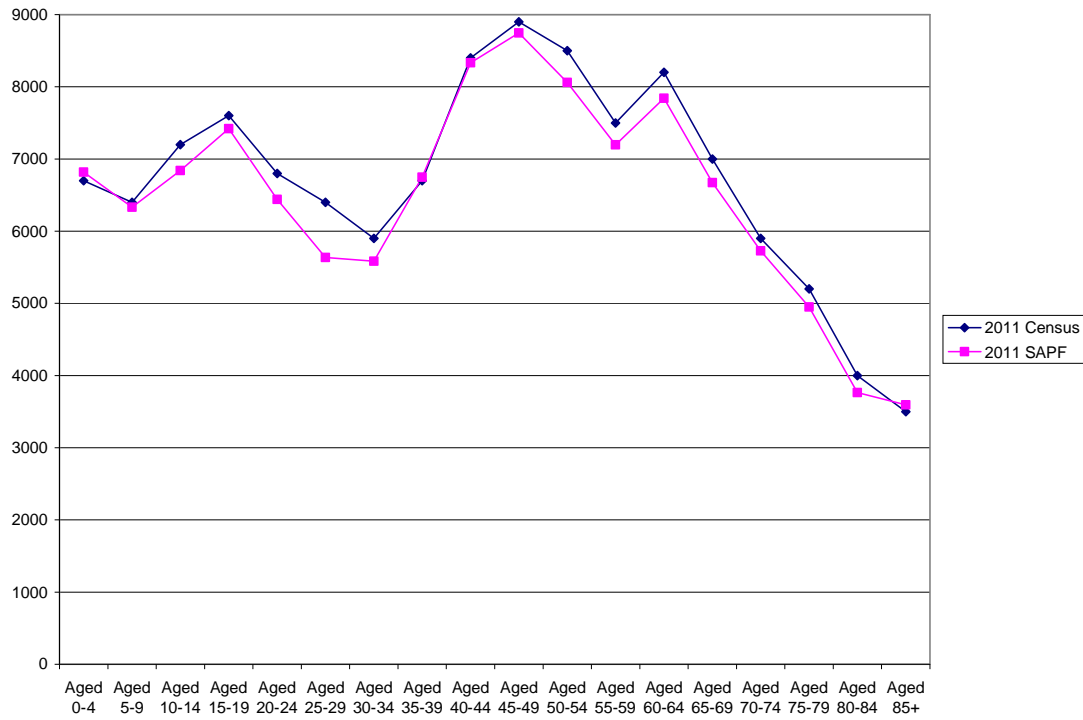
For almost all the age groups in Hart, SAPF had a lower estimate than the 2011 Census. However, the exceptions to this rule have the largest percentage differences, with 17 % more people aged 20-24 in SAPF than the Census, and 25 % more aged 85 and over. The largest number difference is 980 more people in the Census than SAPF for the 35-39 age group (Table 12 and Figure 11).

Havant

Table 13: Havant: Number and Percentage Difference between 2011 Census and 2011 SAPF

Age Group	2011 Census	2011 SAPF	Number Difference	Percentage Difference
0 – 4	6,700	6,818	118	1.76
5 – 9	6,400	6,333	-67	-1.05
10 – 14	7,200	6,840	-360	-5.00
15 – 19	7,600	7,419	-181	-2.38
20 – 24	6,800	6,441	-359	-5.28
25 – 29	6,400	5,635	-765	-11.95
30 – 34	5,900	5,583	-317	-5.37
35 – 39	6,700	6,747	47	0.70
40 – 44	8,400	8,333	-67	-0.80
45 – 49	8,900	8,746	-154	-1.73
50 – 54	8,500	8,060	-440	-5.18
55 – 59	7,500	7,197	-303	-4.04
60 – 64	8,200	7,841	-359	-4.38
65 – 69	7,000	6,673	-327	-4.67
70 – 74	5,900	5,728	-172	-2.92
75 – 79	5,200	4,949	-251	-4.83
80 – 84	4,000	3,764	-236	-5.90
85+	3,500	3,593	93	2.66
Total Population	120,700	116,700	-4,000	-3.31

Figure 12: Population in Five Year Age Groups, 2011 Census and SAPF 2011, Havant



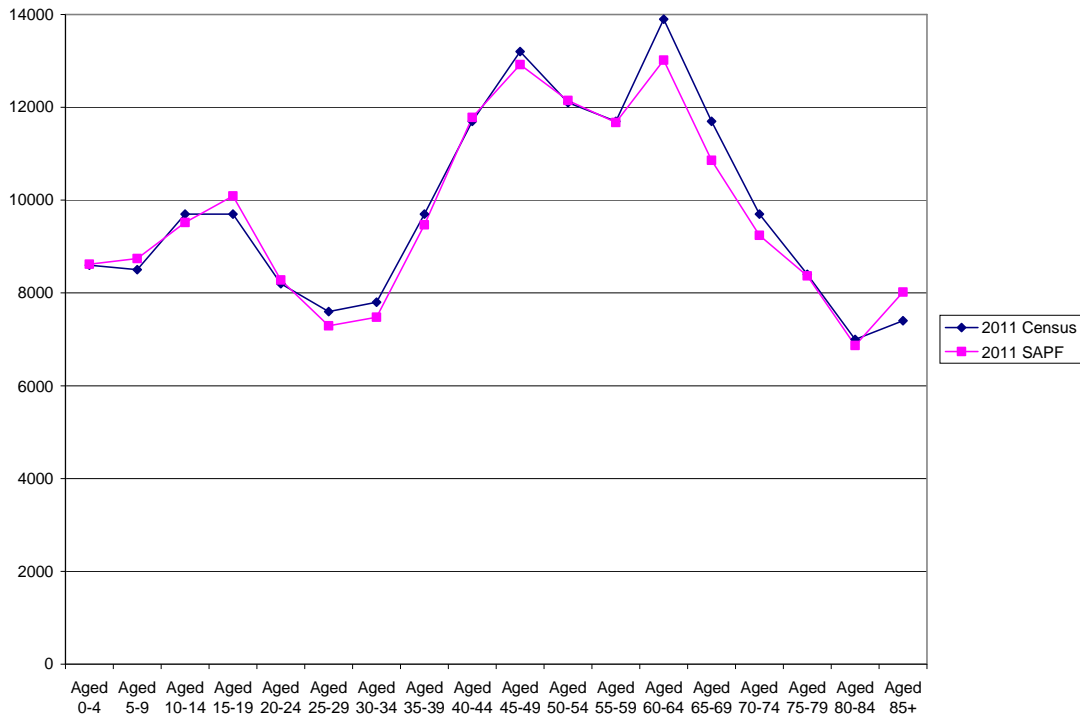
The 2011 Census data for Havant has a larger number of people in almost all the five year age groups. The largest number and percentage difference is 770 people (12 %) for those aged 25-29 (Table 13 and Figure 12).

New Forest

Table 14: New Forest: Number and Percentage Difference between 2011 Census and 2011 SAPF

Age Group	2011 Census	2011 SAPF	Number Difference	Percentage Difference
0 – 4	8,600	8,620	20	0.23
5 – 9	8,500	8,739	239	2.81
10 – 14	9,700	9,520	-180	-1.86
15 – 19	9,700	10,091	391	4.03
20 – 24	8,200	8,277	77	0.94
25 – 29	7,600	7,293	-307	-4.04
30 – 34	7,800	7,475	-325	-4.17
35 – 39	9,700	9,467	-233	-2.40
40 – 44	11,700	11,784	84	0.72
45 – 49	13,200	12,919	-281	-2.13
50 – 54	12,100	12,148	48	0.40
55 – 59	11,700	11,672	-28	-0.24
60 – 64	13,900	13,016	-884	-6.36
65 – 69	11,700	10,857	-843	-7.21
70 – 74	9,700	9,240	-460	-4.74
75 – 79	8,400	8,368	-32	-0.38
80 – 84	7,000	6,868	-132	-1.89
85+	7,400	8,017	617	8.34
Total Population	176,500	174,372	-2,128	-1.21

Figure 13: Population in Five Year Age Groups, 2011 Census and SAPF 2011, New Forest



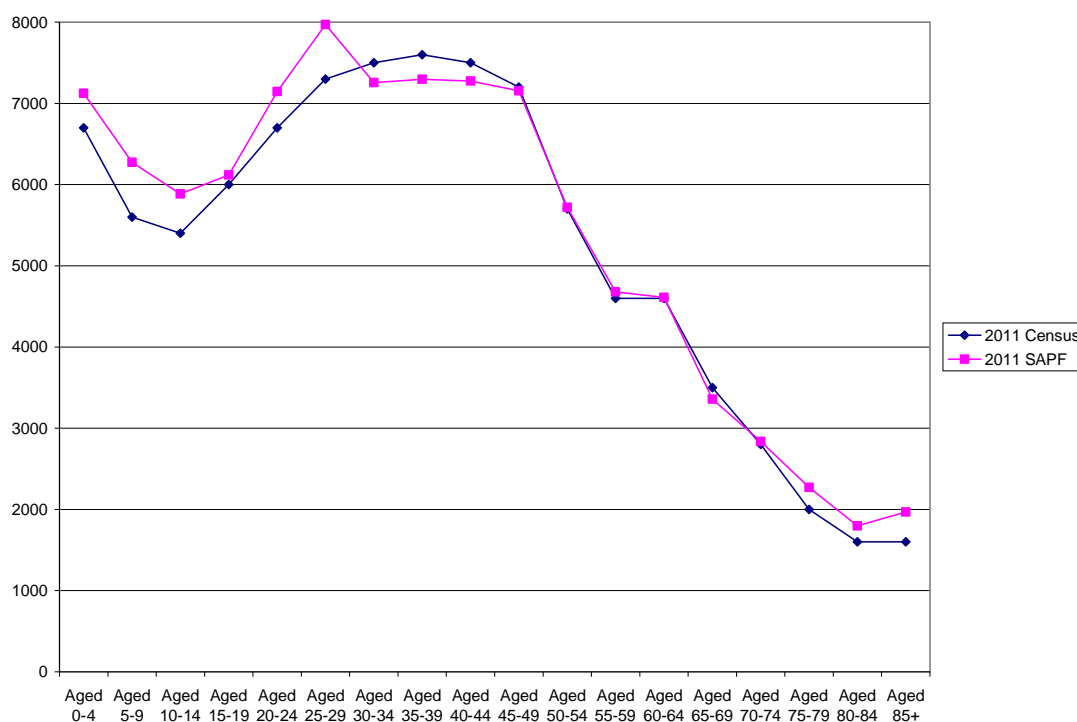
The New Forest figures for the 2011 Census and SAPF are fairly similar until the older age groups. The largest variations occur in the 60-64 age group (880 more people in the Census) and 85 and over age group (8 %) (Table 14 and Figure 13).

Rushmoor

Table 15: Rushmoor: Number and Percentage Difference between 2011 Census and 2011 SAPF

Age Group	2011 Census	2011 SAPF	Number Difference	Percentage Difference
0 – 4	6,700	7,123	423	6.31
5 – 9	5,600	6,275	675	12.05
10 – 14	5,400	5,886	486	9.00
15 – 19	6,000	6,118	118	1.97
20 – 24	6,700	7,146	446	6.66
25 – 29	7,300	7,972	672	9.21
30 – 34	7,500	7,256	-244	-3.25
35 – 39	7,600	7,296	-304	-4.00
40 – 44	7,500	7,276	-224	-2.99
45 – 49	7,200	7,156	-44	-0.61
50 – 54	5,700	5,720	20	0.35
55 – 59	4,600	4,678	78	1.70
60 – 64	4,600	4,612	12	0.26
65 – 69	3,500	3,359	-141	-4.03
70 – 74	2,800	2,836	36	1.29
75 – 79	2,000	2,271	271	13.55
80 – 84	1,600	1,798	198	12.38
85+	1,600	1,967	367	22.94
Total Population	93,800	96,745	2,945	3.14

Figure 14: Population in Five Year Age Groups, 2011 Census and SAPF 2011, Rushmoor



The largest number variation between 2011 Census and SAPF in Rushmoor is for those aged under 45 years. SAPF estimated there to be 680 more children aged 5-9 than were recorded in the 2011 Census. The largest percentage difference is for those aged 85 and over (23 %) (Table 15 and Figure 14).

Test Valley

Table 16: Test Valley: Number and Percentage Difference between 2011 Census and 2011 SAPF

Age Group	2011 Census	2011 SAPF	Number Difference	Percentage Difference
0 – 4	6,700	6,630	-70	-1.04
5 – 9	6,600	6,601	1	0.02
10 – 14	7,100	7,187	87	1.23
15 – 19	7,100	7,653	553	7.79
20 – 24	5,700	6,269	569	9.98
25 – 29	5,400	6,013	613	11.35
30 – 34	6,000	6,108	108	1.80
35 – 39	7,700	7,445	-255	-3.31
40 – 44	9,000	8,957	-43	-0.48
45 – 49	9,700	9,129	-571	-5.89
50 – 54	8,400	7,919	-481	-5.73
55 – 59	7,300	6,892	-408	-5.59
60 – 64	8,300	7,340	-960	-11.57
65 – 69	6,600	5,820	-780	-11.82
70 – 74	5,000	4,421	-579	-11.58
75 – 79	4,000	3,719	-281	-7.03
80 – 84	2,900	2,914	14	0.48
85+	2,800	3,042	242	8.64
Total Population	116,400	114,058	-2,342	-2.01

Figure 15: Population in Five Year Age Groups, 2011 Census and SAPF 2011, Test Valley



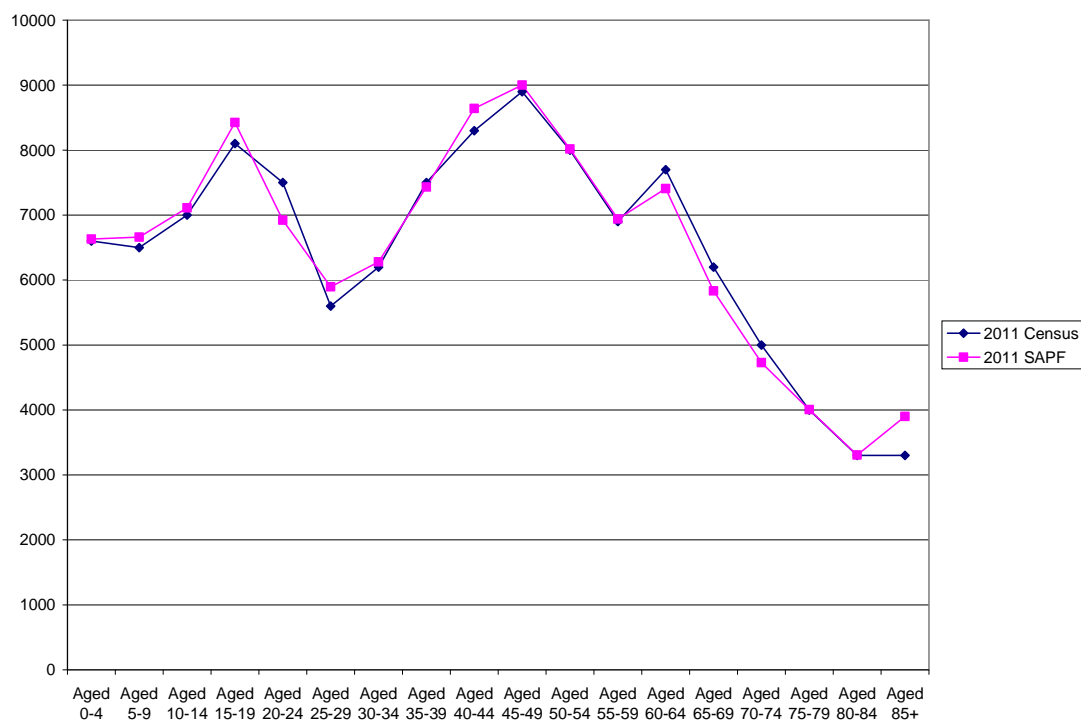
Table 16 and Figure 15 show the results for Test Valley. The most variation occurs in the age groups covering those aged 15-29 and 60-74. The largest number difference is 960 for those aged 60-64 and the largest percentage difference is in the 65-69 age group (12 %).

Winchester

Table 17: Winchester: Number and Percentage Difference between 2011 Census and 2011 SAPF

Age Group	2011 Census	2011 SAPF	Number Difference	Percentage Difference
0 – 4	6,600	6,632	32	0.48
5 – 9	6,500	6,662	162	2.49
10 – 14	7,000	7,110	110	1.57
15 – 19	8,100	8,424	324	4.00
20 – 24	7,500	6,922	-578	-7.71
25 – 29	5,600	5,897	297	5.30
30 – 34	6,200	6,280	80	1.29
35 – 39	7,500	7,432	-68	-0.91
40 – 44	8,300	8,640	340	4.10
45 – 49	8,900	9,002	102	1.15
50 – 54	8,000	8,016	16	0.20
55 – 59	6,900	6,940	40	0.58
60 – 64	7,700	7,407	-293	-3.81
65 – 69	6,200	5,834	-366	-5.90
70 – 74	5,000	4,728	-272	-5.44
75 – 79	4,000	4,005	5	0.13
80 – 84	3,300	3,305	5	0.15
85+	3,300	3,899	599	18.15
Total Population	116,600	117,134	534	0.46

Figure 16: Population in Five Year Age Groups, 2011 Census and SAPF 2011, Winchester



For the total population there is only a small number and percentage difference between the 2011 Census and SAPF (530 people and 0.5 %). In the majority of age groups, the number difference is below 500 and the percentage difference is less than 5 %, with the largest differences 580 for those aged 20-24 and 18 % for those aged 85 and over (Table 17 and Figure 16).