

# Council tax increase of 4.7%

We know that council tax can be a burden, especially for those on low incomes. So we are constantly striving to provide high-quality services and value for money. The County Council continues to lobby the Government for reform of the council tax system so that it better reflects taxpayers' ability to pay.

Over 3,000 council taxpayers on our Citizens Panel were invited to respond to a recent postal consultation. In October 2005 we also held a

consultation workshop about the budget, and gave all Hampshire residents the opportunity to have their say online. Most people did not support the council tax option requiring cuts in services and were willing to accept a higher council tax increase to protect 'life or death' services such as social care for vulnerable children and the elderly.

Whilst we already spend less per head than any other county council in England, we also know we must

continue to modernise our services to provide both better care and value for money.

After taking into account £11 million of efficiency improvements, we have set a council tax rise of 4.7%. The council tax you pay for Hampshire County Council's services remains among the lowest of all county councils.

[www.hants.gov.uk/finance/budget](http://www.hants.gov.uk/finance/budget)

[www.hants.gov.uk/finance/budget](http://www.hants.gov.uk/finance/budget)

INVESTOR IN PEOPLE



For large-print versions of the information in this leaflet, call freephone 0800 028 0888. Braille and other language versions are also available. For more information on council tax benefit, contact your district council or ring 0800 028 0888.

**County Council's budget**  
 Budget questions  
 County Treasurer's Department  
 Hampshire County Council  
 The Castle, Winchester SO23 8UB  
 email: [budget@hants.gov.uk](mailto:budget@hants.gov.uk)  
**County Council's services**  
 Freephone information line  
 0800 028 0888  
 Textphone: 0800 100 2484  
 email: [info.centres@hants.gov.uk](mailto:info.centres@hants.gov.uk)  
[www.hants.gov.uk](http://www.hants.gov.uk)

These figures show the part of your 2006/07 bill which is for services provided by the County Council only. Your bill states which band your property is in.

Band A	£607.08
Band B	£708.26
Band C	£809.44
Band D	£910.62
Band E	£1,112.98
Band F	£1,315.34
Band G	£1,517.70
Band H	£1,821.24

For further information

## Council Tax 2006/07

Your money - working for all

# Where does the money go?

In 2006/07, Hampshire County Council will invest £1.5 billion in services for you and your local community. This is equivalent to £100 a month for every man, woman and child in Hampshire. Over the last year spending on those services has meant:

- 59% of 16-year-olds achieving five GCSEs A\*-C
- 90,000 people benefiting from social care
- 32,000 young people taking part in over 173 youth projects
- maintenance of 5,300 miles of road and 140,000 street lights
- 600,000 tonnes of waste recycled or incinerated to generate energy
- additive-free school meals available to 170,000 pupils in 540 schools
- 3,500 marriages conducted and 6,000 births registered
- 17,000 Trading Standards enquiries dealt with
- 7 million people visiting our 54 libraries.

On top of this, for the fourth year running, Hampshire County Council services have been given a top 4-star rating in the Audit Commission's annual Comprehensive Performance Assessment despite tougher assessment criteria this year.

For more information on the Council's performance and how your council tax is spent, please read the spring edition of *Hampshire Now*, due through your letterbox in late March. You can also visit the performance plan website at [www.hants.gov.uk/corporatestrategy](http://www.hants.gov.uk/corporatestrategy)

[www.hants.gov.uk/finance/budget](http://www.hants.gov.uk/finance/budget)

## A budget of tough choices in hard times

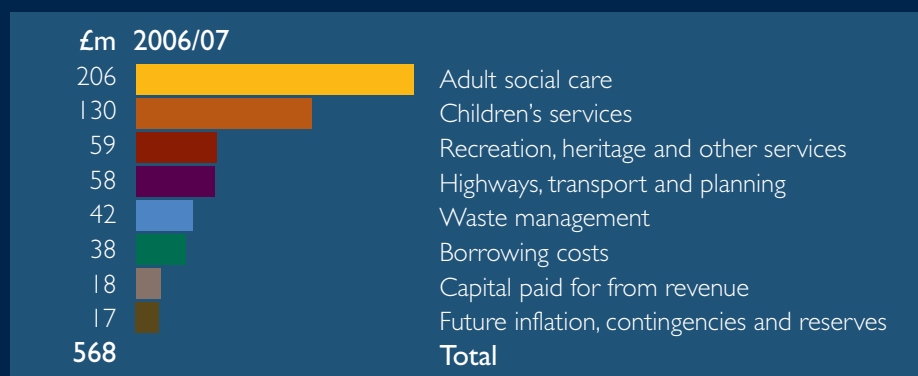
There continue to be significant cost pressures on local authorities. This is because of the increasing demand for social care for an ageing population, the growing number of young people with complex disabilities who need our care, the consequences of even more cars on the road, and the volume of Hampshire's rubbish and the rising cost of dealing with it. The cost of all these services is increasing faster than inflation.

Hampshire and other local authorities have had some limited success in persuading the Government that more grant is needed to deal with some of

these pressures. However, this year, we will still be receiving a below-inflation grant increase of less than 0.2%.

The Government has also made more changes to the way it allocates grant to local authorities. This could mean

that £38 million, or about 30%, of our current grant will be transferred to councils in other parts of the country. We expect to feel the effect of this in 2008/09 but will continue to strongly oppose these changes.



## Down to detail

Until now, the Government has contributed to the funding of schools, as with other services, through general grant. However, from 1 April 2006 it will provide a Dedicated Schools Grant to cover the full cost of running Hampshire's schools. General grant will be reduced. This funding change does not affect the services delivered, the level of investment or the amount of council tax an individual pays. It means council tax will fund a greater proportion of non-school spending than before.

In 2006/07 the County Council expects to spend £1,489 million on services, compared with £1,414 million in 2005/06. After deducting specific grants, including the schools grant, and £136 million income, mainly from fees and charges, the County Council has set a budget of £568 million. This is an increase of 5.2%, after adjusting for funding changes such as the schools grant, resulting in a council tax increase of 4.7%.

	£m
<b>Budget for 2005/06</b>	<b>1,108</b>
Dedicated Schools Grant	-574
Other specific grant changes	6
<b>Adjusted budget for 2005/06</b>	<b>540</b>
Efficiency improvements	-11
Change in spending and use of reserves	22
Inflation	17
<b>Budget for 2006/07</b>	<b>568</b>
<b>which is financed by:</b>	
Government support:	
- national business rates	101
- Government general grant	19
Surplus on district councils' collection funds	3
<b>Balance to be met by council taxpayers</b>	<b>445</b>