



2009/10

Data information booklet for

Basingstoke and Deane

(external audience version)

**Hampshire Ethnic Minority and
Traveller Achievement Service**

Equality, Excellence, Diversity

*Compiled for EMTAS by Hampshire Data
and Information Team (DaIT) 2010*



For further information please visit www.hants.gov.uk/education/ema

Contents

- Summary 3
- Ethnic Minority Summary Charts..... 4
- Ethnic Minority Summary 7
- Languages Summary 8
- New Arrivals..... 11
- New Year-Rs 12
- 2009 Foundation Stage Profile Attainment – Table..... 13
- 2009 Foundation Stage Profile Attainment - Charts..... 14
- 2009 Key Stage / GCSE Attainment - table 15
- 2009 Key Stage / GCSE Attainment - charts 16
- 2009 Narrowing The Attainment Gap - county level 20
- Autumn Term 2009 – Primary School District Absence Summary 21
- Autumn Term 2009 – Secondary School District Absence Summary 22
- NEET Figures By Ethnicity - March 2010..... 23
- 2009 Pupil Attitude Survey..... 24

Note:

This version of the booklet has been produced for audiences external to Hampshire County Council.

The difference between internal and external versions is where small numbers are concerned. To prevent the identification of individuals, wherever a cohort contains 5 or fewer pupils the cohort size is shown simply as <5, and the corresponding percentage of total is blanked out. In instances where there is only one ethnic group with fewer than 5 people, the exact number in the next smallest group is also hidden. Wherever showing cohort size as <5 is not sufficient to protect identities, small cohort sizes show as <10.

Summary

There are currently 2,557 ethnic minority children and young people (C&YP) at schools within Basingstoke & Deane, which represents 11.5% of the district (10.8% last year).

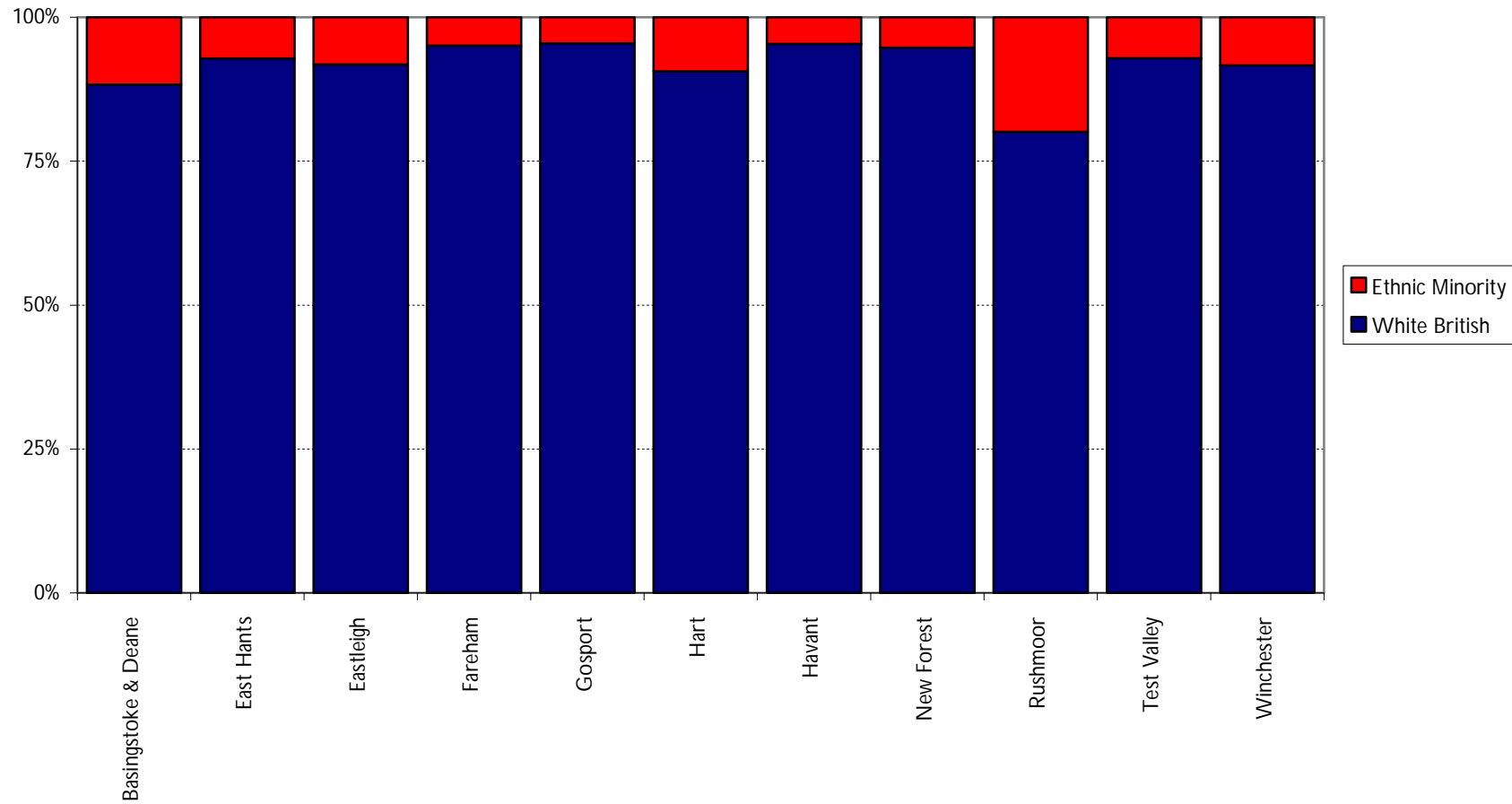
Ethnic minority C&YP from Basingstoke & Deane schools account for 18.7% of the overall total for the county.

There are currently 90 different languages spoken by C&YP within the district, up from 84 last year.

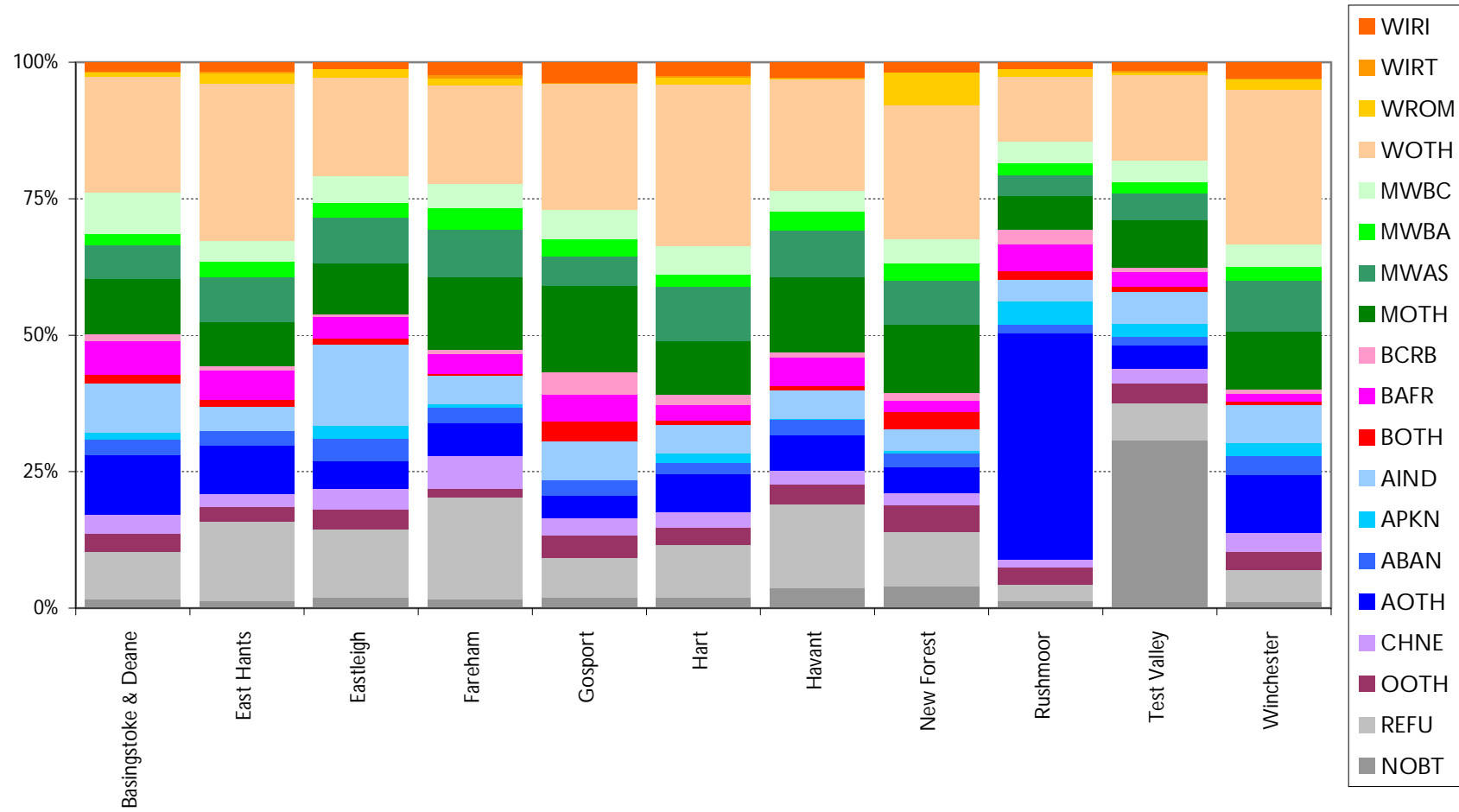
5.7% of the pupils have English as an additional language (5.3% last year).

Ethnic Minority Summary Charts

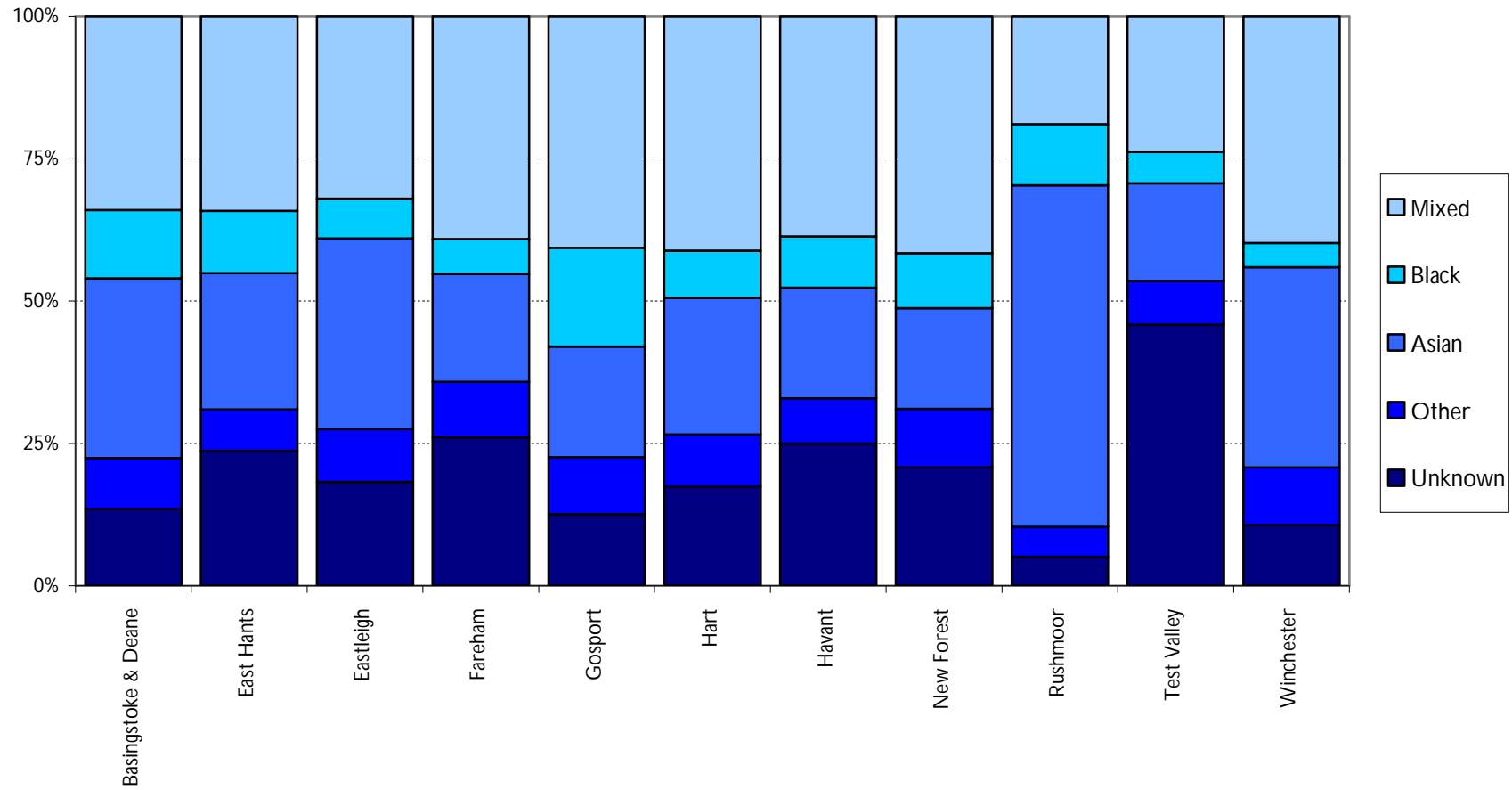
Ethnic Minority Pupils at Hampshire state-maintained schools, split by school district



Ethnic Minority Pupils at Hampshire state-maintained schools, split by school district



Ethnic Minority Pupils at Hampshire state-maintained schools, split by school district



Languages Summary

This table details the first languages spoken by the children attending a Hampshire maintained school within the district.

First Language of Children in Hampshire Schools January 2010

| Basingstoke & Deane | | Total Pupils in District = | 22,059 |
|-----------------------------------|-------------------------------|----------------------------|---------------|
| Language | Principally Where Spoken | Number of Children | % of District |
| English | England | 20,732 | 94.0% |
| Nepali | Nepal | 170 | 0.8% |
| Polish | Poland | 163 | 0.7% |
| Other than English | | 83 | 0.4% |
| Bengali | Bangladesh | 78 | 0.4% |
| Chinese | China, Taiwan | 71 | 0.3% |
| Tagalog/Filipino | Philippines | 53 | 0.2% |
| Malayalam | India | 52 | 0.2% |
| Believed to be English | | 49 | 0.2% |
| Tamil | Sri Lanka | 40 | 0.2% |
| French | France, Canada | 32 | 0.1% |
| Believed to be Other than English | | 30 | 0.1% |
| Portuguese | Portugal, Brazil | 30 | 0.1% |
| Spanish | Spain, Columbia, Mexico | 29 | 0.1% |
| Russian | Russia | 28 | 0.1% |
| Shona | Zimbabwe | 27 | 0.1% |
| Urdu | Pakistan | 26 | 0.1% |
| Gujarati | India | 25 | 0.1% |
| Arabic | Middle East also North Africa | 22 | 0.1% |
| Panjabi | India | 19 | 0.1% |
| Turkish | Turkey | 19 | 0.1% |
| Hindi | India | 17 | 0.1% |
| Telugu | India | 16 | 0.1% |
| Afrikaans | South Africa | 15 | 0.1% |
| Marathi | India | 14 | 0.1% |
| Dutch/Flemish | Netherlands | 13 | 0.1% |
| Thai | Thailand | 13 | 0.1% |
| Yoruba | Nigeria | 11 | 0.0% |
| Bulgarian | Bulgaria | 9 | 0.0% |
| German | Germany | 8 | 0.0% |
| Italian | Italy | 8 | 0.0% |
| Lithuanian | Lithuania | 8 | 0.0% |
| Persian/Farsi | Iran, Afghanistan | 8 | 0.0% |
| Refused | | 8 | 0.0% |
| Kannada | India | 7 | 0.0% |

| | | | |
|-----------------------------|-----------------------|----|------|
| Akan | Ghana | 6 | 0.0% |
| Bemba | Zambia, Rep of Congo | 6 | 0.0% |
| Classification Pending | | 6 | 0.0% |
| Slovak | Slovakia | 6 | 0.0% |
| British Sign Language | | <5 | - |
| Cambodian/Khmer | Cambodia | <5 | - |
| Ebira | Nigeria | <5 | - |
| Tigrinya | Ethiopia | <5 | - |
| Vietnamese | Vietnam | <5 | - |
| Czech | Czech Republic | <5 | - |
| Efik-Ibibio | Nigeria | <5 | - |
| Fula/Fulfulde-Pulaar | Senegal | <5 | - |
| Pashto/Pakhto | Afghanistan, Pakistan | <5 | - |
| Romanian | Romania | <5 | - |
| Sinhala | Sri Lanka | <5 | - |
| Visayan/Bisaya | Philippines | <5 | - |
| Zulu | South Africa | <5 | - |
| Cebuano/Sugbuanon | Philippines | <5 | - |
| Hiligaynon | Philippines | <5 | - |
| Indonesian/Bahasa Indonesia | Indonesia | <5 | - |
| Information not obtained | | <5 | - |
| Japanese | Japan | <5 | - |
| Malay | Malaysia, Indonesia | <5 | - |
| Ndebele | Zimbabwe | <5 | - |
| Serbian/Croatian/Bosnian | Serbia/Croatia/Bosnia | <5 | - |
| Swahili | Tanzania | <5 | - |
| Tswana/Setswana | Botswana | <5 | - |
| Albanian/Shqip | Albania | <5 | - |
| Azeri | Azerbaijan | <5 | - |
| Caribbean Creole English | Caribbean | <5 | - |
| Croatian | Croatia | <5 | - |
| Dari Persian | Iran | <5 | - |
| Esan/Ishan | Nigeria | <5 | - |
| Estonian | Estonia | <5 | - |
| Finnish | Finland | <5 | - |
| Galician/Galego | | <5 | - |
| Greek | Greece | <5 | - |
| Hebrew | Israel | <5 | - |
| Hungarian | Hungary | <5 | - |
| Katchi | India | <5 | - |
| Korean | Korea | <5 | - |
| Latvian | Latvia | <5 | - |
| Lozi/Silozi | Zambia | <5 | - |
| Luganda | Uganda | <5 | - |
| Luo (Kenya/Tanzania) | | <5 | - |
| Macedonian | Macedonia | <5 | - |

| | | | |
|--------------------------------------|--------------|--------------|-------------|
| Manding/Malinke | Senegal | <5 | - |
| Mauritian/Seychelles Creole | Mauritius | <5 | - |
| Mongolian (Khalkha) | | <5 | - |
| Norwegian | Norway | <5 | - |
| Serbian | Serbia | <5 | - |
| Slovenian | Slovenia | <5 | - |
| Swedish | Sweden | <5 | - |
| Ukrainian | Ukraine | <5 | - |
| Xhosa | South Africa | <5 | - |
| Total EAL Pupils | | 1,257 | 5.7% |
| % of Total Hants EAL Children | | 20% | |

These total excludes the following Language groupings:

| | |
|------------------------|--------------------------|
| Believed To Be English | English |
| British Sign Language | Information not obtained |
| Classification Pending | Refused |

Notes:

These figures include all pupils in Nursery, Primary, Secondary and Special schools. If a pupil is dually registered they will be counted once at each school attended.

This data are accurate as of the March 1, 2010 and were taken from the January 2010 School Census.

New Referrals

This table shows the number of new referrals made to EMTAS from the district during the period April 2009 to March 2010. New arrivals are broken down by language, which is usually more readily available to schools than ethnicity when referrals are made.

| Language | Number of Referrals | % of district referrals | % of all Hampshire EMTAS referrals |
|--------------------------------------|---------------------|-------------------------|------------------------------------|
| Polish | 33 | 25.4% | 4.7% |
| Nepali | 15 | 11.5% | 2.1% |
| Chinese | 12 | 9.2% | 1.7% |
| Bengali | 8 | 6.2% | 1.1% |
| Portuguese | 6 | 4.6% | 0.8% |
| Tamil | 6 | 4.6% | 0.8% |
| Russian | <5 | <4% | <1% |
| French | <5 | <4% | <1% |
| Malayalam | <5 | <4% | <1% |
| Turkish | <5 | <4% | <1% |
| Arabic | <5 | <4% | <1% |
| Bulgarian | <5 | <4% | <1% |
| Panjabi | <5 | <4% | <1% |
| Tagalog | <5 | <4% | <1% |
| Marathi | <5 | <4% | <1% |
| Medumba | <5 | <4% | <1% |
| Telugu | <5 | <4% | <1% |
| Thai | <5 | <4% | <1% |
| Dutch | <5 | <4% | <1% |
| English | <5 | <4% | <1% |
| Farsi | <5 | <4% | <1% |
| Gujarati | <5 | <4% | <1% |
| Hebrew | <5 | <4% | <1% |
| Hungarian | <5 | <4% | <1% |
| Lithuanian | <5 | <4% | <1% |
| Romanian | <5 | <4% | <1% |
| Romany | <5 | <4% | <1% |
| Saurashtra | <5 | <4% | <1% |
| Shona | <5 | <4% | <1% |
| Spanish | <5 | <4% | <1% |
| Yoruba | <5 | <4% | <1% |
| Basingstoke & Deane Total | 130 | 100.0% | 18.3% |

New Year-R Pupils

This table gives an ethnicity breakdown of the current 'Year R' intake for the district.

| District: Basingstoke & Deane | | |
|--|--|---------------------------------------|
| Ethnicity | Number of Year R Pupils | % of All Year R Pupils |
| White - British | 1,605 | 84.1% |
| White - Irish | <5 | - |
| Gypsy Roma (WROM) | <5 | - |
| Traveller Irish Heritage (WIRT) | <5 | - |
| Any Other White Background | 62 | 3.2% |
| White and Asian | 17 | 0.9% |
| White and Black African | 12 | 0.6% |
| White and Black Caribbean | 25 | 1.3% |
| Any Other Mixed Background | 39 | 2.0% |
| Bangladeshi | <5 | - |
| Indian | 34 | 1.8% |
| Pakistani | <5 | - |
| Any Other Asian Background | 27 | 1.4% |
| Black - Caribbean | <5 | - |
| Black - African | 13 | 0.7% |
| Any Other Black Background | 8 | 0.4% |
| Chinese | 12 | 0.6% |
| Any Other Ethnic Group | 9 | 0.5% |
| Information Not Yet Obtained | 20 | 1.0% |
| Refused | <5 | - |
| Total Year R Pupils | 1,908 | 100% |
| Total Ethnic Minority Year R Pupils | 278 | 14.57 |

Notes:

The 'Total Ethnic Minorities' figure excludes 'White British', 'Information Not Obtained' and 'Refused'.

This data were taken from the January 2010 School Census and include all 'Year R' pupils within the district as of January 21, 2010

Year R children shown here are included within the figures shown in the ethnic minority summary earlier in the booklet. They are show here to highlight potentially new ethnic groups or languages which may not have previously been identified.

2009 Foundation Stage Profile Attainment – Table

% of pupils achieving 6 or more points

| Basingstoke & Deane | | Personal, Social and Emotional Development | | | Communication, Language and Literacy | | | | Problem solving, reasoning and numeracy | | | Knowledge & understanding of world | | | 78+ overall and 6+ in all PSE and CLL | |
|------------------------------|---------------|--|--------------------|-----------------------|---------------------------------------|----------------------------|---------|---------|---|-------------|---------------------------|------------------------------------|----------------------|-------------|---------------------------------------|------|
| | Num of Pupils | Disposition & Attitudes | Social Development | Emotional Development | Language for Communication & Thinking | Linking sounds and letters | Reading | Writing | Numbers as labels and for counting | Calculating | Shapes Space and Measures | Physical development | creative development | PSE and CLL | Achievement Gap | |
| Hampshire | | 90% | 85% | 79% | 84% | 73% | 73% | 61% | 90% | 76% | 83% | 83% | 89% | 81% | 51% | 33% |
| England | | 89% | 83% | 79% | 82% | 74% | 72% | 62% | 88% | 73% | 82% | 81% | 90% | 80% | 52% | 34% |
| White - British | 1,592 | 92% | 85% | 80% | 87% | 71% | 75% | 62% | 91% | 77% | 84% | 85% | 90% | 84% | 53% | 34% |
| White - Irish | <10 | 100% | 100% | 100% | 100% | 100% | 100% | 100% | 100% | 100% | 0% | 100% | 100% | 100% | | |
| Gypsy / Roma | <10 | 0% | 0% | 0% | 0% | 0% | 0% | 0% | 0% | 0% | 0% | 0% | 0% | 0% | | |
| Traveller of Irish Heritage | <10 | | | | | | | | | | | | | | | |
| Any Other White Background | 43 | 93% | 84% | 74% | 84% | 60% | 67% | 58% | 95% | 74% | 74% | 79% | 93% | 86% | | |
| White and Black Caribbean | 15 | 93% | 60% | 53% | 73% | 60% | 40% | 40% | 80% | 60% | 67% | 80% | 100% | 87% | 45% | 29% |
| White and Black African | <10 | 80% | 80% | 70% | 80% | 80% | 70% | 60% | 90% | 80% | 80% | 70% | 80% | 100% | | |
| White and Asian | 23 | 91% | 87% | 78% | 91% | 78% | 87% | 65% | 96% | 91% | 87% | 87% | 100% | 87% | | |
| Any Other Mixed Background | 34 | 94% | 82% | 82% | 88% | 74% | 76% | 71% | 97% | 76% | 82% | 79% | 85% | 88% | | |
| Black - Caribbean | <10 | 100% | 50% | 100% | 100% | 50% | 50% | 0% | 100% | 100% | 100% | 50% | 100% | 100% | 50% | 45% |
| Black - African | 12 | 100% | 83% | 67% | 83% | 50% | 75% | 67% | 83% | 75% | 67% | 75% | 100% | 83% | | |
| Any Other Black Background | <10 | 100% | 100% | 100% | 100% | 100% | 100% | 50% | 100% | 100% | 100% | 100% | 100% | 100% | | |
| Indian | 33 | 97% | 85% | 79% | 88% | 88% | 85% | 88% | 94% | 82% | 82% | 76% | 91% | 82% | 57% | 36% |
| Pakistani | <10 | 100% | 80% | 80% | 100% | 80% | 100% | 100% | 100% | 100% | 100% | 100% | 100% | 100% | | |
| Bangladeshi | <10 | 75% | 50% | 50% | 0% | 25% | 50% | 50% | 100% | 50% | 50% | 50% | 75% | 25% | | |
| Any Other Asian Background | 26 | 96% | 77% | 69% | 85% | 73% | 69% | 65% | 96% | 81% | 88% | 81% | 92% | 85% | | |
| Chinese | <10 | 80% | 50% | 30% | 60% | 50% | 50% | 50% | 90% | 60% | 60% | 70% | 90% | 60% | | |
| Any Other Ethnic Group | <10 | 83% | 83% | 50% | 83% | 50% | 50% | 50% | 83% | 50% | 50% | 67% | 83% | 67% | 50% | 100% |
| Information Not Yet Obtained | 18 | 94% | 83% | 72% | 89% | 67% | 78% | 61% | 89% | 67% | 72% | 72% | 89% | 83% | 60% | 10% |
| Refused | 26 | 96% | 88% | 85% | 96% | 69% | 81% | 73% | 100% | 73% | 92% | 88% | 96% | 88% | 58% | 23% |
| Total | 1,863 | 92% | 85% | 79% | 86% | 71% | 75% | 62% | 91% | 77% | 84% | 84% | 90% | 84% | 53% | 34% |

Notes

England data as published by DCSF

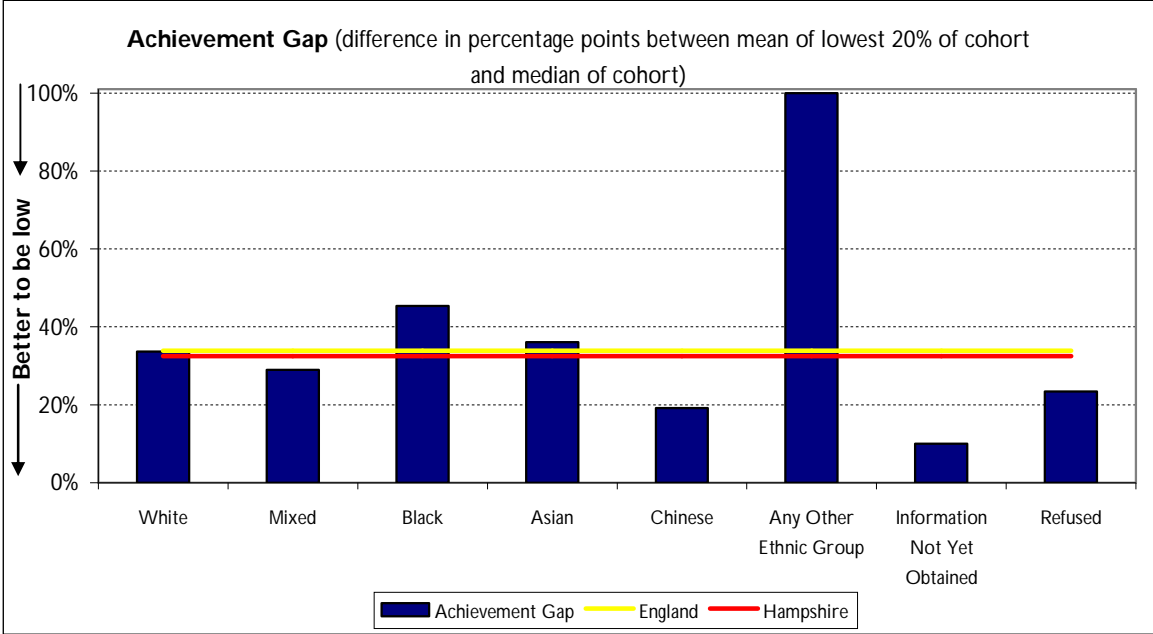
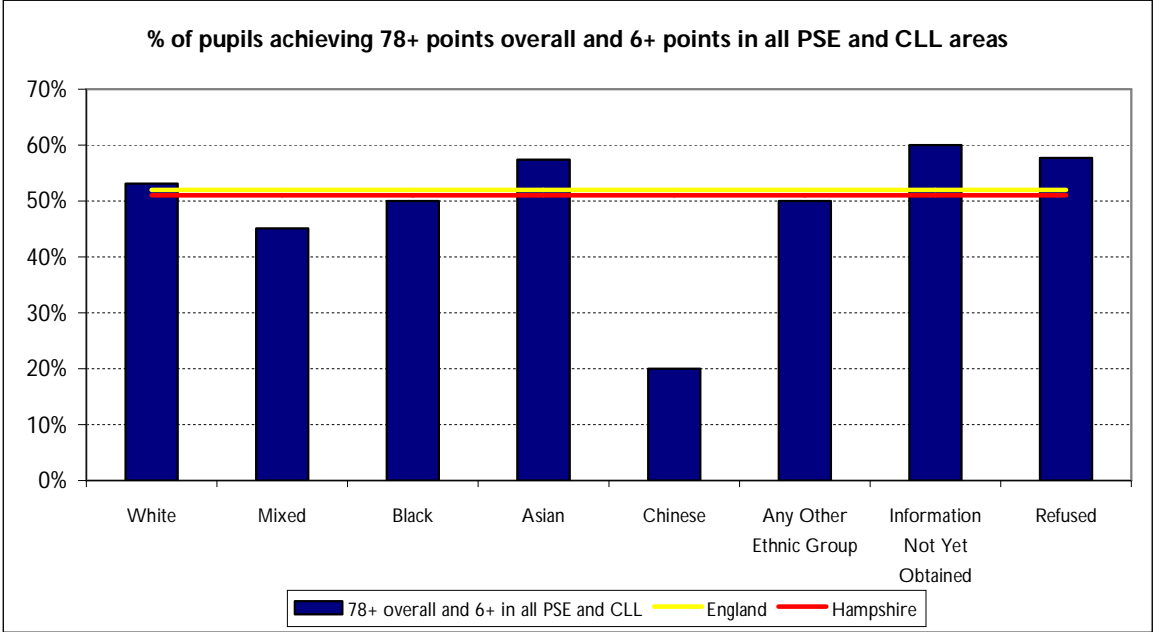
DCSF: Early Years Foundation Stage Profile Results in England, 2008/09 (14 October 2009)

Hampshire data and ethnicity breakdowns created from Hampshire held results data

Keypas export 28/9/09

Achievement gap is the percentage gap in achievement between the lowest 20% of achieving children in a local authority (mean), and the score of the median child in the same authority expressed as a percentage of the median score

2009 Foundation Stage Profile Attainment - Charts



2009 Key Stage / GCSE Attainment - table

Basingstoke & Deane

| | Key Stage 1 (Provisional) | | | | | Key Stage 2 (Provisional) | | | | | Key Stage 3 (Provisional) | | | | Key Stage 4 GCSE (Provisional) | | | |
|------------------------------|---------------------------|---------------|---------------|-------------|---------------|---------------------------|---------------|-------------|-------------------------|---------------|---------------------------|---------------|-------------|---------------|--------------------------------|----------|----------------------------|----------------------|
| | Num of Pupils | Reading % L2+ | Writing % L2+ | Maths % L2+ | Science % L2+ | Num of Pupils | English % L4+ | Maths % L4+ | English AND Maths % L4+ | Science % L4+ | Num of Pupils | English % L5+ | Maths % L5+ | Science % L5+ | Num of Pupils | % 5+ A-C | % 5+ A-C (Inc Eng & Maths) | % Eng AND Maths A*-C |
| Hampshire | | 88% | 85% | 92% | 94% | | 82% | 81% | 75% | 91% | | 79% | 81% | 83% | | 70% | 55% | 56% |
| England | | 84% | 81% | 89% | 89% | | 80% | 79% | 72% | 88% | | | | | | 70% | 50% | 55% |
| White - British | 1,553 | 90% | 88% | 94% | 95% | 1,667 | 84% | 82% | 77% | 91% | 1,563 | 78% | 80% | 82% | 1,540 | 68% | 51% | 51% |
| White - Irish | <10 | 100% | 100% | 100% | 100% | <10 | 33% | 67% | 33% | 67% | <10 | 67% | 67% | 89% | <10 | 80% | 60% | 60% |
| Gypsy / Roma | <10 | 33% | 67% | 33% | 67% | <10 | 100% | 100% | 100% | 100% | <10 | 100% | 0% | 100% | <10 | 0% | 0% | 0% |
| Traveller of Irish Heritage | <10 | 0% | 0% | 50% | 50% | <10 | | | | | <10 | | | | <10 | | | |
| Any Other White Background | 53 | 75% | 72% | 91% | 91% | 52 | 81% | 92% | 79% | 94% | 43 | 88% | 86% | 81% | 44 | 70% | 50% | 50% |
| White and Black Caribbean | 18 | 83% | 78% | 89% | 100% | 13 | 77% | 85% | 69% | 100% | 13 | 77% | 92% | 85% | <10 | 67% | 67% | 67% |
| White and Black African | <10 | 100% | 100% | 100% | 100% | <10 | 60% | 60% | 60% | 100% | <10 | | | | <10 | 100% | 50% | 50% |
| White and Asian | 12 | 92% | 100% | 100% | 100% | 15 | 100% | 100% | 100% | 100% | 11 | 82% | 82% | 82% | <10 | 83% | 50% | 50% |
| Any Other Mixed Background | 26 | 85% | 85% | 92% | 96% | 22 | 91% | 86% | 77% | 91% | 16 | 75% | 94% | 88% | <10 | 30% | 20% | 20% |
| Black - Caribbean | <10 | 100% | 100% | 100% | 100% | <10 | 100% | 100% | 100% | 100% | <10 | 75% | 50% | 100% | <10 | 50% | 50% | 50% |
| Black - African | 19 | 84% | 84% | 89% | 84% | 15 | 93% | 93% | 93% | 93% | 13 | 58% | 58% | 67% | <10 | 88% | 63% | 63% |
| Any Other Black Background | <10 | 100% | 100% | 100% | 100% | <10 | 80% | 40% | 40% | 80% | <10 | 100% | 100% | 100% | <10 | 43% | 0% | 0% |
| Indian | 29 | 100% | 97% | 100% | 100% | 18 | 89% | 94% | 89% | 94% | <10 | 43% | 100% | 86% | <10 | 94% | 88% | 88% |
| Pakistani | <10 | 100% | 100% | 100% | 100% | <10 | 100% | 100% | 100% | 100% | <10 | 100% | 100% | 100% | <10 | | | |
| Bangladeshi | <10 | 67% | 83% | 83% | 83% | 11 | 82% | 64% | 55% | 82% | <10 | 100% | 100% | 100% | <10 | 50% | 50% | 50% |
| Any Other Asian Background | 23 | 87% | 87% | 87% | 91% | 28 | 86% | 75% | 71% | 96% | 25 | 80% | 88% | 88% | 34 | 50% | 26% | 26% |
| Chinese | <10 | 80% | 100% | 100% | 100% | <10 | 86% | 100% | 86% | 100% | <10 | 88% | 100% | 100% | <10 | 80% | 80% | 80% |
| Any Other Ethnic Group | <10 | 100% | 100% | 100% | 100% | <10 | 70% | 90% | 60% | 100% | <10 | 60% | 60% | 70% | <10 | 44% | 33% | 33% |
| Information Not Yet Obtained | <10 | | | | | <10 | | | | | 19 | 36% | 50% | 40% | <10 | 30% | 30% | 30% |
| Refused | <10 | 80% | 80% | 90% | 80% | <10 | 90% | 100% | 90% | 100% | 41 | 71% | 70% | 76% | 37 | 54% | 30% | 30% |
| Total | 1,776 | 89% | 88% | 94% | 94% | 1,885 | 84% | 82% | 77% | 92% | 1,798 | 78% | 80% | 82% | 1,671 | 67% | 50% | 51% |

Notes

England and Hampshire data as published by DCSF

DCSF: National Curriculum Assessments at Key Stage 1 in England, 2009 (25 August 2009)

DCSF: National Curriculum Assessments at Key Stage 2 in England 2008/09 (Revised) (1 December 2009)

(KS3 data not available nationally - taken from Hampshire held results data)

DCSF: GCSE and Equivalent Results in England, 2008/09 (Provisional) (15 October 2009)

Ethnicity breakdowns created from Hampshire held results data

KS1 from Keygas export 17/8/09

KS2 from Keygas export 4/3/10

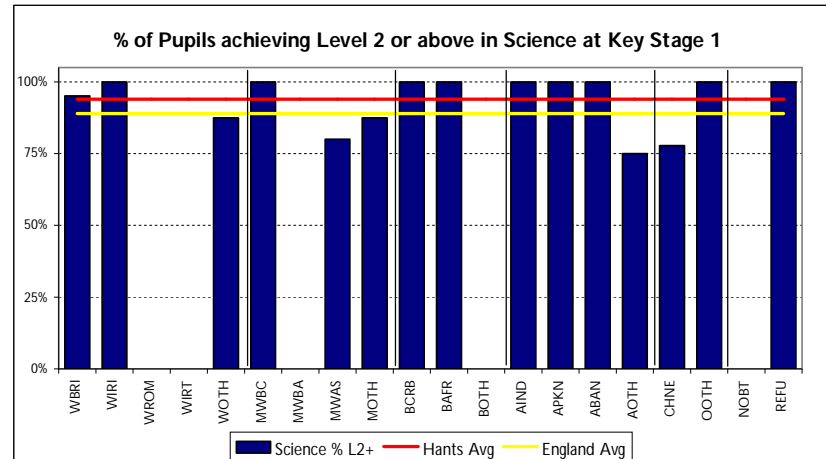
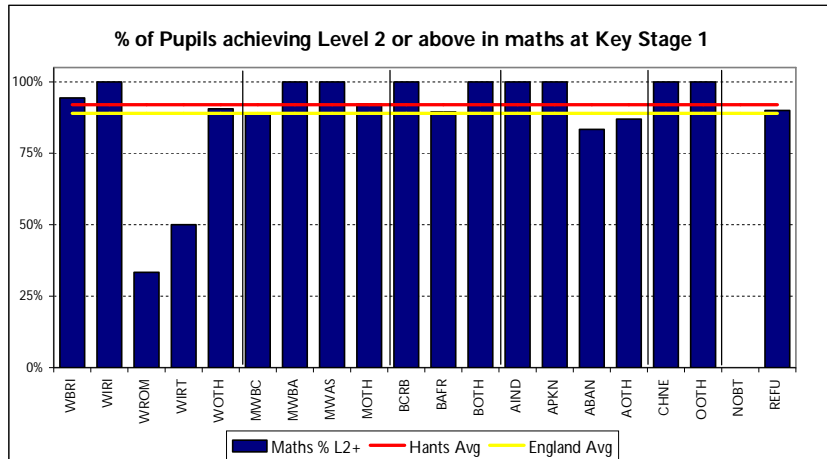
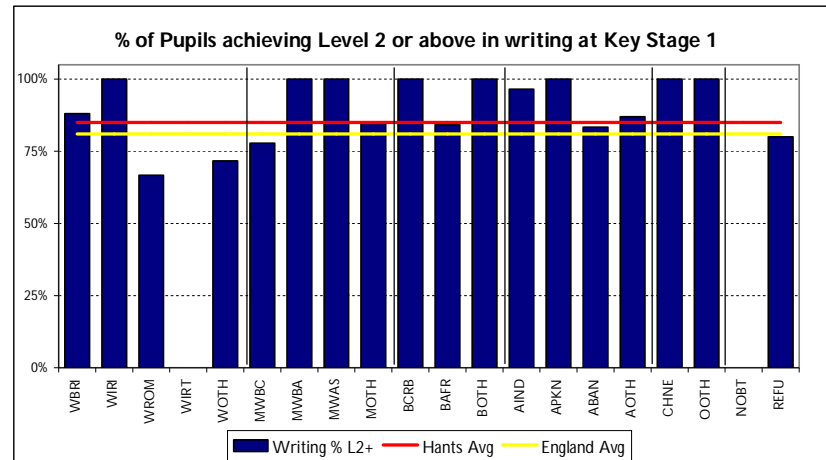
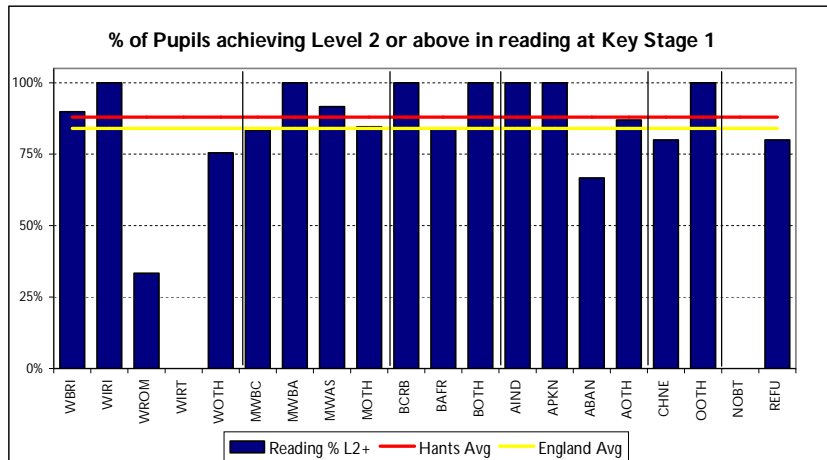
KS3 from Keygas export 4/3/10

GCSE as at 4/3/10 as held in EPAS

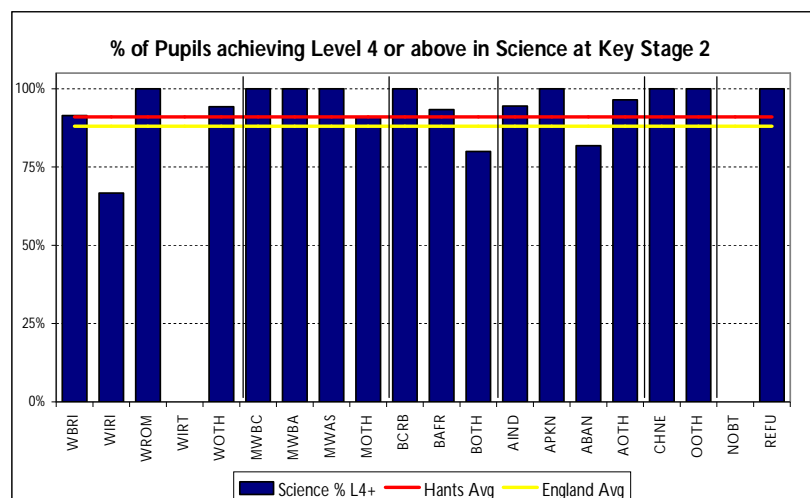
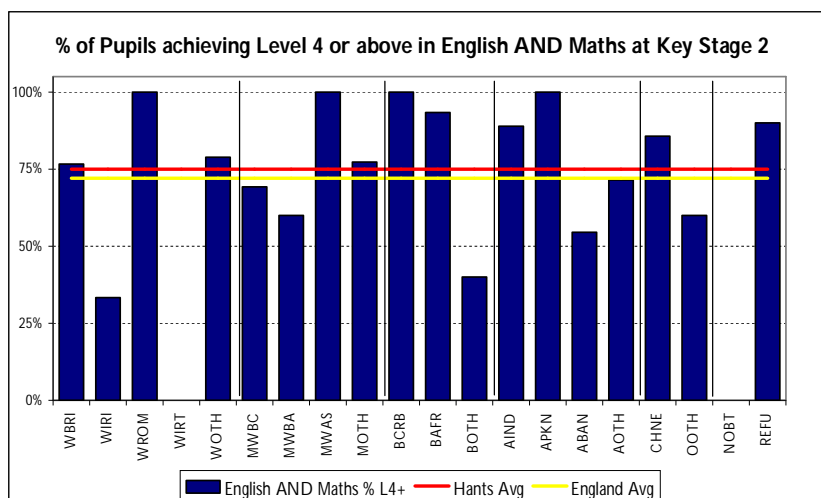
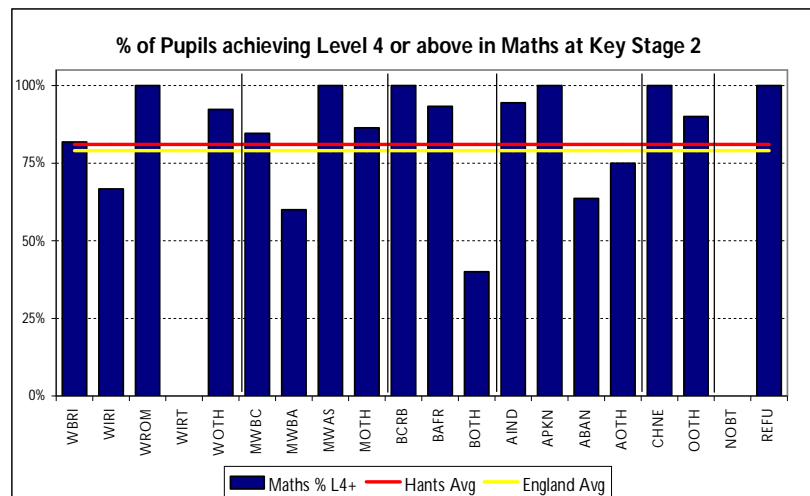
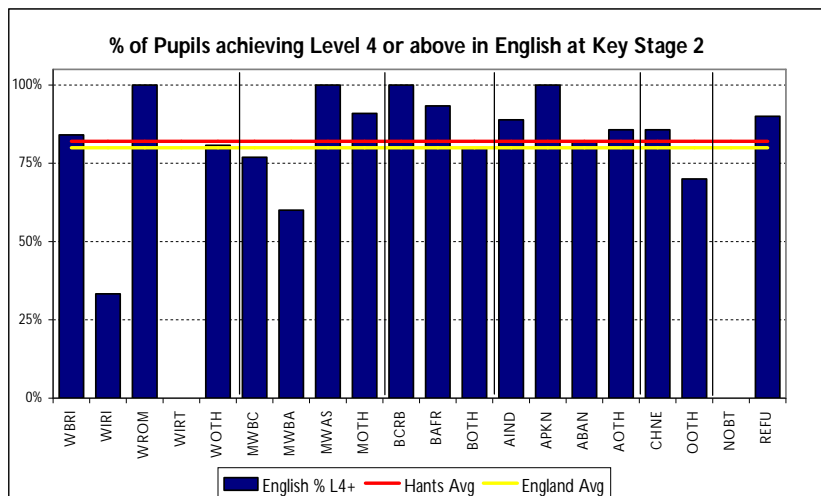
2009 Key Stage / GCSE Attainment - charts

Key Stage 1 attainment charts

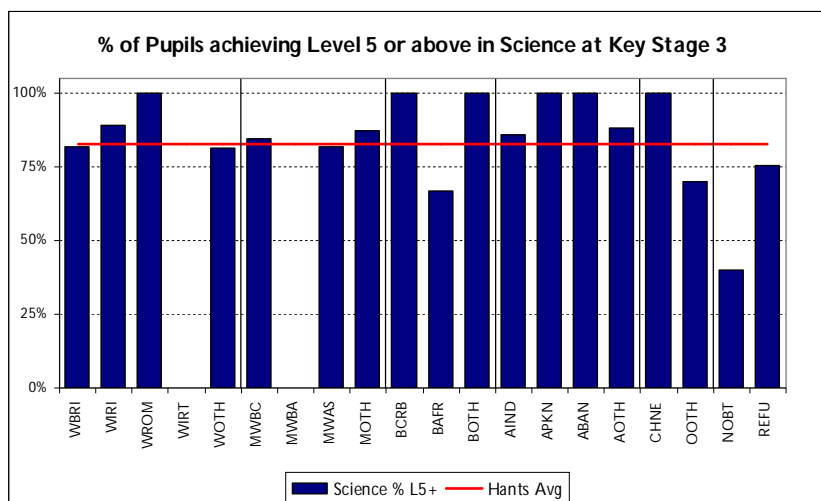
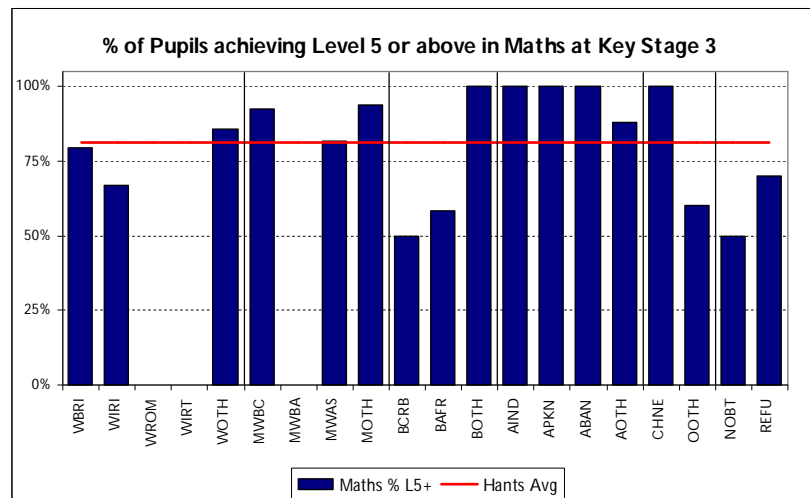
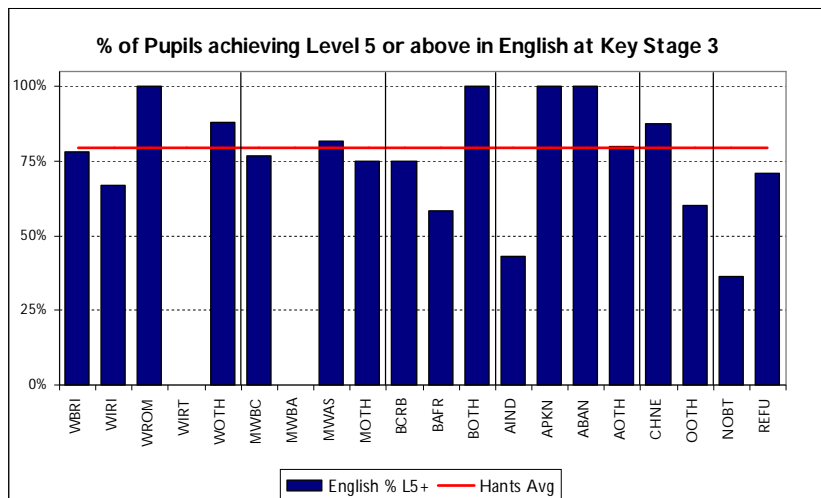
District-level: Basingstoke & Deane



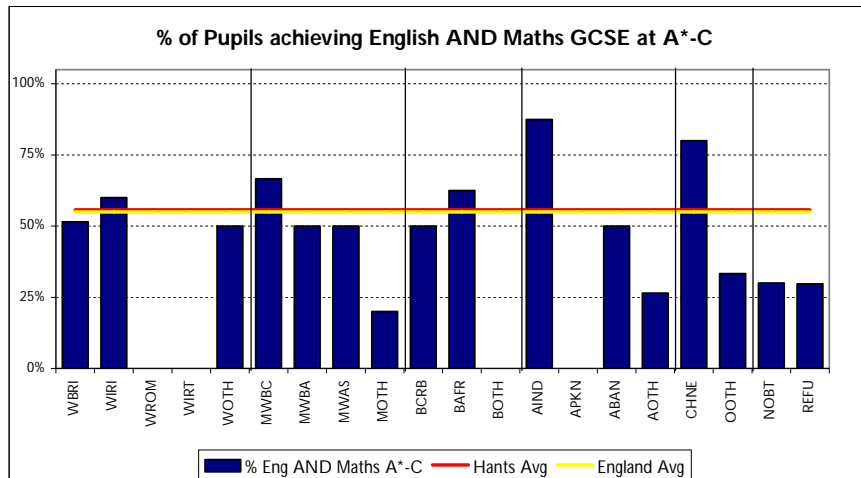
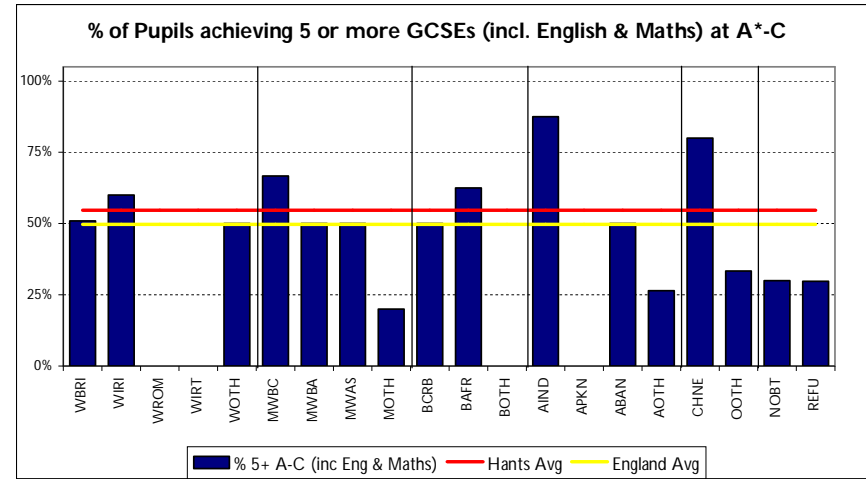
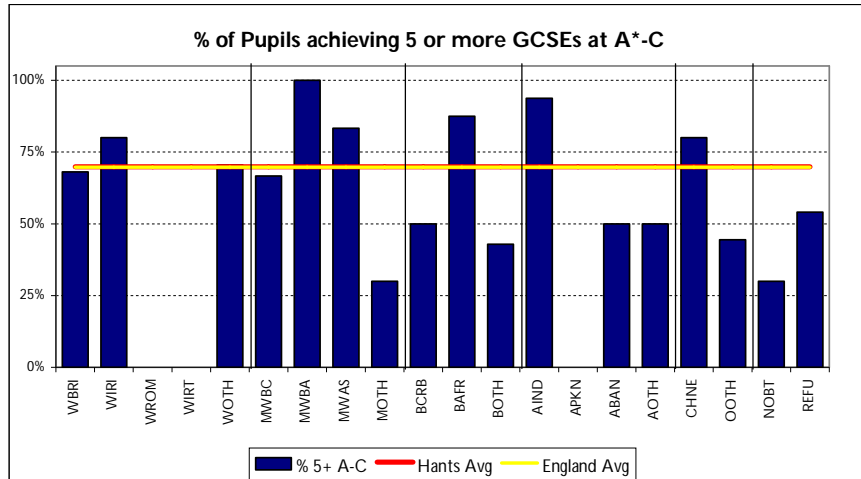
Key Stage 2 attainment charts
District-level: Basingstoke & Deane



Key Stage 3 attainment charts
District-level: Basingstoke & Deane



Key Stage 4 (GCSE) attainment charts
District-level: Basingstoke & Deane



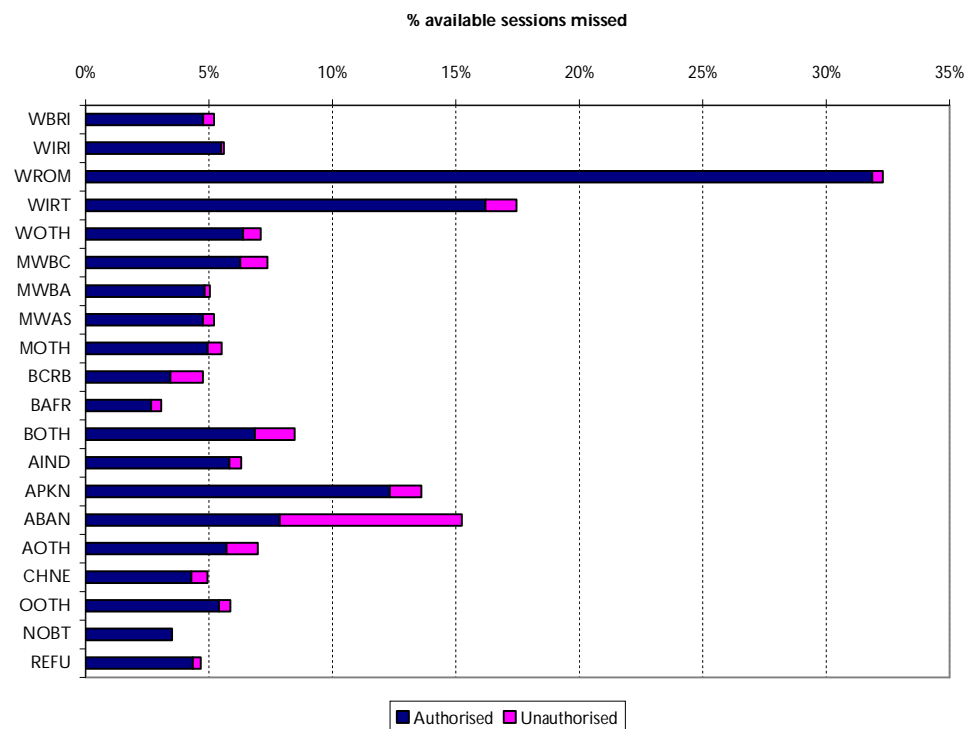
2009 Narrowing The Attainment Gap – county level

This chart displays the difference in percentage points between each ethnic group and White British in the percentage of pupils achieving the standard at each key-stage. The figures are averaged over a three year period (2007-2009) to smooth out fluctuations in low numbers.

| | Key Stage 1 | | | Key Stage 2 | | | Key Stage 3 | | | Key Stage 4 | |
|------------------------------|---------------|---------------|-------------|---------------|-------------|---------------|---------------|-------------|---------------|-------------|-------------------------------|
| | Reading Level | Writing Level | Maths Level | English Level | Maths Level | Science Level | English Level | Maths Level | Science Level | % 5+ A-C | % 5+ A-C (inc Eng & Maths) |
| | 2+ | 2+ | 2+ | 4+ | 4+ | 4+ | 5+ | 5+ | 5+ | | |
| White - Irish | 6 | 4 | 5 | 6 | 8 | 5 | 1 | 2 | 3 | 5 | 7 |
| Gypsy / Roma | -45 | -36 | -38 | -34 | -33 | -18 | -51 | -54 | -54 | -53 | -57 |
| Traveller of Irish Heritage | -75 | -72 | -17 | -21 | -44 | -38 | -61 | -64 | -29 | -53 | -55 |
| Any Other White Background | -5 | -4 | -1 | -3 | 4 | 0 | -1 | 3 | 1 | 3 | 3 |
| White and Black Caribbean | 1 | 2 | 3 | -3 | -1 | -1 | 4 | 3 | 5 | -2 | -1 |
| White and Black African | 0 | -4 | 1 | -1 | -2 | 4 | 11 | 3 | -1 | 2 | 12 |
| White and Asian | 4 | 6 | 2 | 7 | 6 | 5 | 8 | 9 | 9 | 20 | 15 |
| Any Other Mixed Background | 0 | 0 | -1 | 3 | 1 | 2 | 3 | 4 | 3 | 4 | 5 |
| Black - Caribbean | 1 | -2 | -2 | -10 | -18 | -4 | -14 | -23 | -16 | -20 | -19 |
| Black - African | -4 | -6 | -5 | -7 | -15 | -7 | 1 | -3 | -3 | -4 | -3 |
| Any Other Black Background | 2 | -1 | 2 | -11 | -18 | -7 | -2 | -21 | -19 | -28 | -18 |
| Indian | 4 | 3 | 1 | 9 | 11 | 6 | 13 | 12 | 7 | 23 | 17 |
| Pakistani | 1 | -1 | -2 | -13 | -9 | -15 | 2 | -3 | -6 | 19 | 18 |
| Bangladeshi | -5 | -1 | -8 | -4 | -14 | -2 | -4 | -11 | -11 | -6 | -5 |
| Any Other Asian Background | -4 | -5 | -2 | -18 | -10 | -12 | -17 | -9 | -18 | -20 | -9 |
| Chinese | 0 | 1 | 2 | 3 | 10 | 0 | 2 | 16 | 7 | 27 | 24 |
| Any Other Ethnic Group | -6 | -7 | -5 | -6 | 0 | 1 | -14 | -14 | -17 | -6 | -3 |
| Information Not Yet Obtained | -23 | -24 | -11 | -4 | -8 | 1 | -17 | -15 | -20 | -25 | -25 |
| Refused | -3 | -3 | -1 | -2 | 0 | 0 | -7 | -7 | -6 | -11 | -11 |

Autumn Term 2009 – Primary School District Absence Summary

| Basingstoke & Deane | No of pupils | Available sessions | Total Absence | Authorised absence | Un- authorised absence |
|------------------------------|--------------|--------------------|---------------|--------------------|------------------------|
| White - British | 9,614 | 1,324,418 | 5.2% | 4.8% | 0.4% |
| White - Irish | 19 | 2,642 | 5.6% | 5.5% | 0.1% |
| Gypsy / Roma | 16 | 1,870 | 32.3% | 31.9% | 0.4% |
| Traveller of Irish Heritage | 6 | 716 | 17.5% | 16.2% | 1.3% |
| Any Other White Background | 333 | 45,142 | 7.1% | 6.4% | 0.7% |
| White and Black Caribbean | 110 | 15,194 | 7.4% | 6.3% | 1.1% |
| White and Black African | 33 | 4,584 | 5.0% | 4.8% | 0.2% |
| White and Asian | 108 | 14,488 | 5.2% | 4.8% | 0.4% |
| Any Other Mixed Background | 156 | 21,158 | 5.5% | 4.9% | 0.6% |
| Black - Caribbean | 19 | 2,650 | 4.8% | 3.4% | 1.3% |
| Black - African | 93 | 12,746 | 3.1% | 2.7% | 0.4% |
| Any Other Black Background | 24 | 2,858 | 8.5% | 6.9% | 1.6% |
| Indian | 156 | 21,234 | 6.3% | 5.8% | 0.5% |
| Pakistani | 22 | 2,912 | 13.6% | 12.3% | 1.3% |
| Bangladeshi | 39 | 5,432 | 15.2% | 7.9% | 7.4% |
| Any Other Asian Background | 140 | 19,344 | 7.0% | 5.7% | 1.3% |
| Chinese | 54 | 7,311 | 4.9% | 4.3% | 0.7% |
| Any Other Ethnic Group | 35 | 4,754 | 5.9% | 5.4% | 0.5% |
| Information Not Yet Obtained | 14 | 1,886 | 3.5% | 3.5% | 0.0% |
| Refused | 111 | 15,334 | 4.7% | 4.3% | 0.3% |
| District total | 11,102 | 1,526,673 | 5.4% | 4.9% | 0.5% |



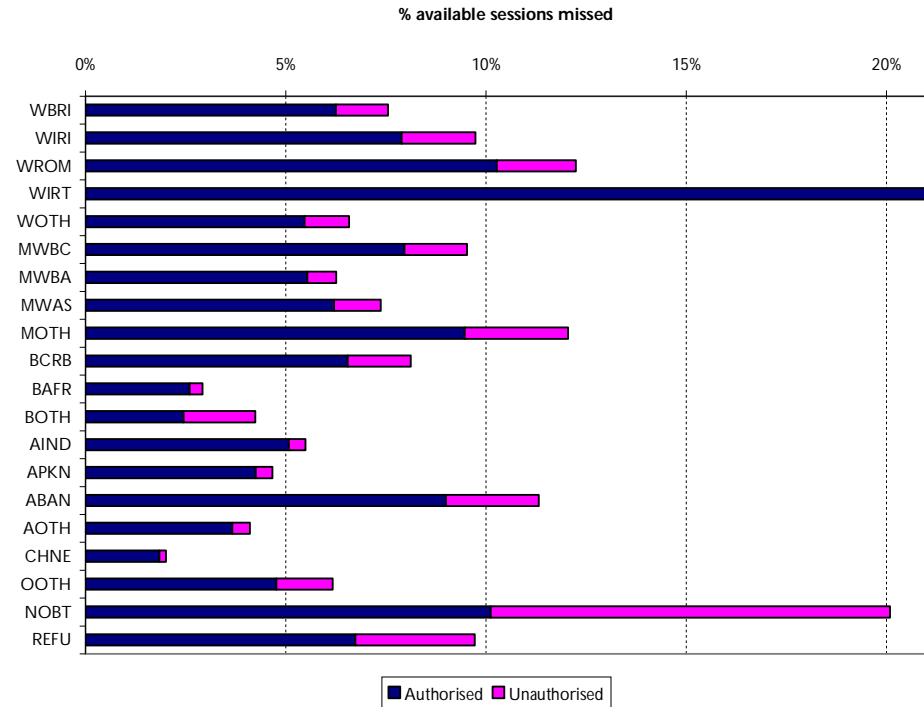
Notes

Data taken from the January 2010 school census

Includes all pupils who attended a school during the autumn term

Autumn Term 2009 – Secondary School District Absence Summary

| Basingstoke & Deane | No of pupils | Available sessions | Total Absence | Authorised absence | Un- authorised absence |
|------------------------------|--------------|--------------------|---------------|--------------------|------------------------|
| White - British | 7,886 | 1,080,742 | 7.6% | 6.3% | 1.3% |
| White - Irish | 23 | 3,194 | 9.7% | 7.9% | 1.8% |
| Gypsy / Roma | <10 | - | 12.2% | 10.3% | 2.0% |
| Traveller of Irish Heritage | <5 | - | 54.3% | 54.3% | 0.0% |
| Any Other White Background | 205 | 27,556 | 6.6% | 5.5% | 1.1% |
| White and Black Caribbean | 76 | 10,374 | 9.5% | 8.0% | 1.6% |
| White and Black African | 13 | 1,806 | 6.3% | 5.5% | 0.7% |
| White and Asian | 57 | 7,896 | 7.4% | 6.2% | 1.2% |
| Any Other Mixed Background | 90 | 12,298 | 12.1% | 9.5% | 2.6% |
| Black - Caribbean | 15 | 2,094 | 8.1% | 6.5% | 1.6% |
| Black - African | 65 | 8,697 | 2.9% | 2.6% | 0.3% |
| Any Other Black Background | 21 | 2,618 | 4.2% | 2.4% | 1.8% |
| Indian | 63 | 8,670 | 5.5% | 5.1% | 0.4% |
| Pakistani | <10 | - | 4.7% | 4.3% | 0.4% |
| Bangladeshi | 38 | 5,124 | 11.3% | 9.0% | 2.3% |
| Any Other Asian Background | 144 | 19,092 | 4.1% | 3.7% | 0.4% |
| Chinese | 31 | 4,282 | 2.0% | 1.8% | 0.2% |
| Any Other Ethnic Group | 50 | 6,696 | 6.2% | 4.8% | 1.4% |
| Information Not Yet Obtained | 16 | 2,036 | 20.1% | 10.1% | 10.0% |
| Refused | 131 | 17,818 | 9.7% | 6.7% | 3.0% |
| District total | 8,939 | 1,223,059 | 7.5% | 6.2% | 1.3% |



Notes

Data taken from the January 2010 school census

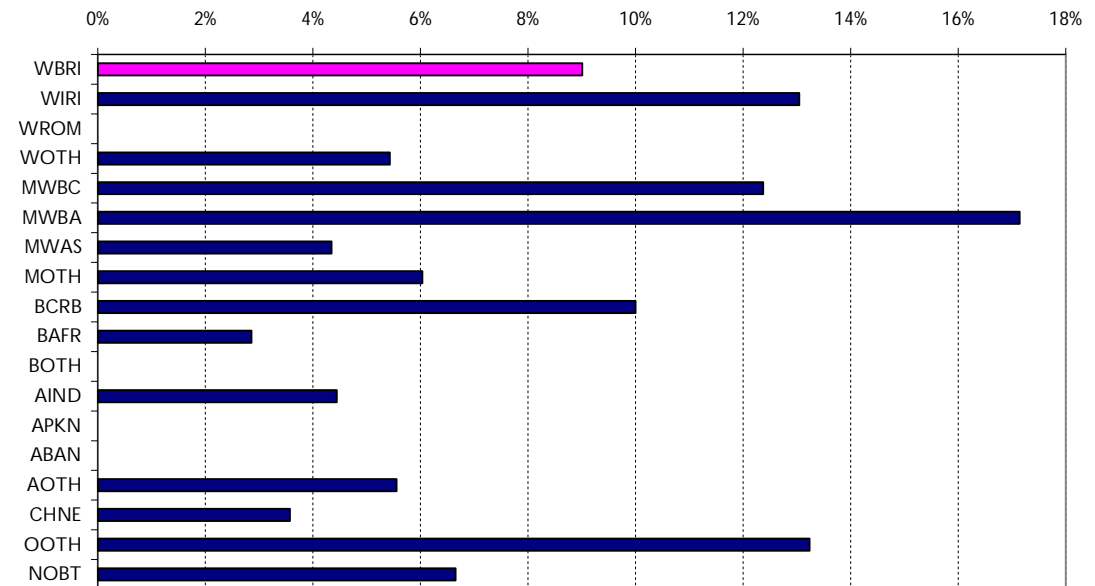
Includes all pupils who attended a school during the autumn term

Chart is scaled to show detail for most groups. As there is only one WIRT pupil, the chart has not been scaled for this category.

NEET Figures By Ethnicity - March 2010

| Basingstoke & Deane | Monthly average adjusted NEETs | Monthly average adjusted EETs | Monthly average District Total | % adjusted NEET |
|------------------------------|--------------------------------|-------------------------------|--------------------------------|-----------------|
| Hampshire | | | | 6.3% |
| England | | | | 6.7% |
| White - British | 418.3 | 4,226.3 | 4,644.7 | 9.0% |
| White - Irish | <5 | - | - | 13.0% |
| Gypsy / Roma | <5 | - | - | |
| Any Other White Background | 5.7 | 98.7 | 104.3 | 5.4% |
| White and Black Caribbean | <5 | - | - | 12.4% |
| White and Black African | <5 | - | - | 17.1% |
| White and Asian | <5 | - | - | 4.3% |
| Any Other Mixed Background | <5 | - | - | 6.0% |
| Black - Caribbean | <5 | - | - | 10.0% |
| Black - African | <5 | - | - | 2.9% |
| Any Other Black Background | <5 | - | - | 0.0% |
| Indian | <5 | - | - | 4.4% |
| Pakistani | <5 | - | - | 0.0% |
| Bangladeshi | <5 | - | - | 0.0% |
| Any Other Asian Background | <5 | - | - | 5.6% |
| Chinese | <5 | - | - | 3.6% |
| Any Other Ethnic Group | <5 | - | - | 13.2% |
| Information Not Yet Obtained | 144.7 | 2,029.3 | 2,174.0 | 6.7% |
| Total | 593 | 6,650 | 7,243 | 8.2% |

% Adjusted NEET by Ethnic Group



Notes

Data source:

Hampshire and England data: DCSF January Risk Scan table

District-level and ethnic split: Hampshire CorePlus 8/3/10

Comparisons with the Hampshire figure are for illustration purposes only. They should be treated with caution due to differences in calculation methods at district and county level.

Ethnicity comparisons are with White-British

Raw NEET figures are adjusted to allow for young people whose records have expired.

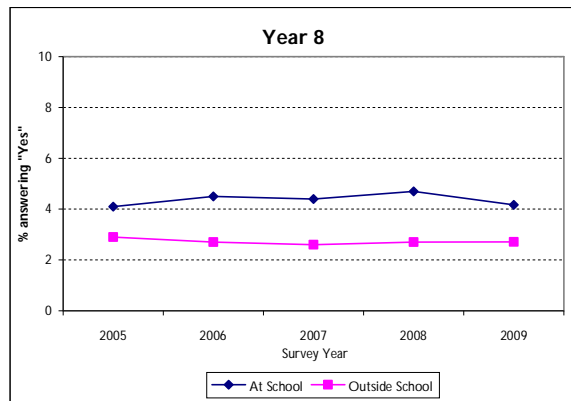
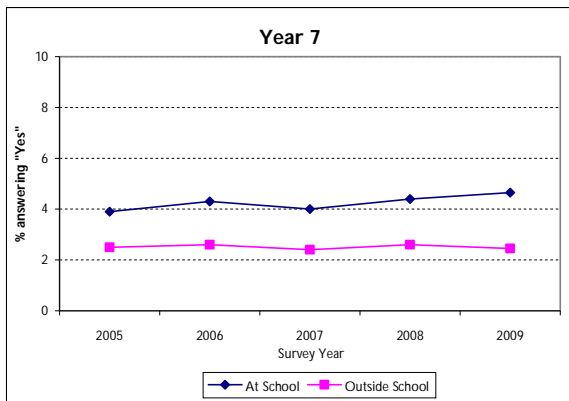
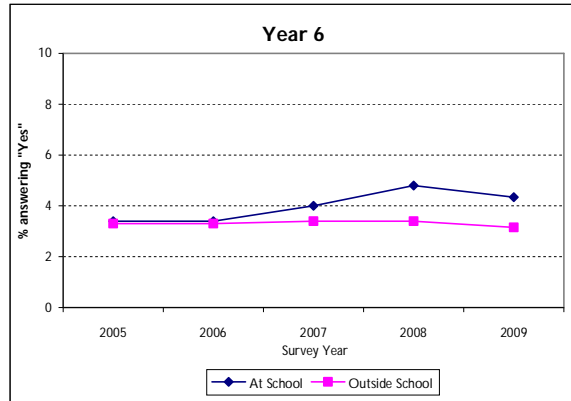
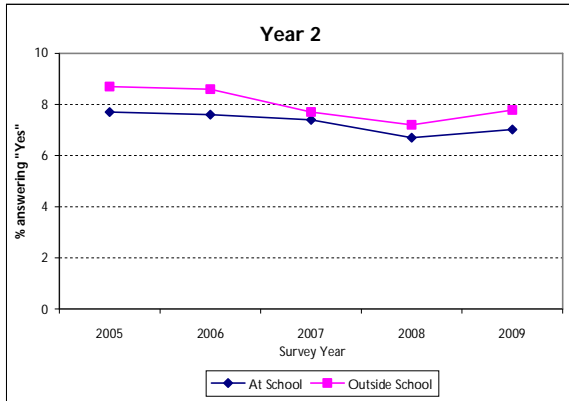
2009 Pupil Attitude Survey

Bullying due to discrimination

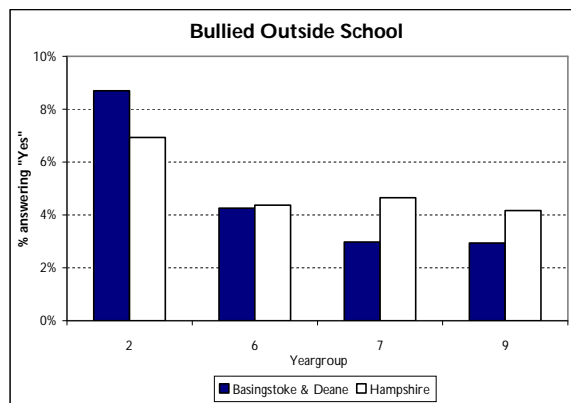
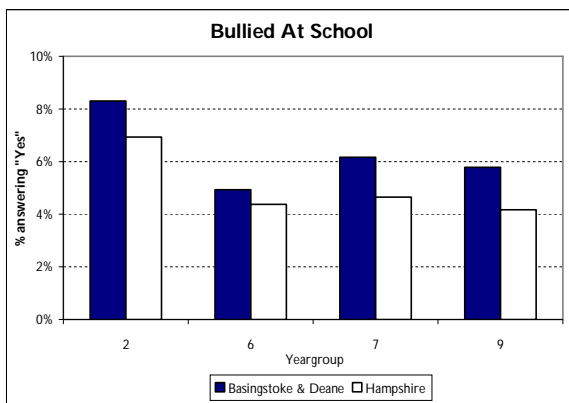
Part A) I have been bullied **at school** on the basis of my race/religion/language*

Part B) I have been bullied **outside school** on the basis of my race/religion/language*

Hampshire-county level, trend by yeargroup



District vs Hampshire 2009



* Or equivalent age-specific wording of question