



2009/10
Data information booklet for

Fareham

(external audience version)

Hampshire Ethnic Minority and
Traveller Achievement Service

Equality, Excellence, Diversity

*Compiled for EMTAS by Hampshire Data
and Information Team (DaIT) 2010*



For further information please visit www.hants.gov.uk/education/ema

Contents

- Summary 3
- Ethnic Minority Summary Charts..... 4
- Ethnic Minority Summary 7
- Languages Summary 8
- New Referrals..... 10
- New Year-R Pupils 11
- 2009 Foundation Stage Profile Attainment – Table..... 12
- 2009 Foundation Stage Profile Attainment - Charts..... 13
- 2009 Key Stage / GCSE Attainment - table 14
- 2009 Key Stage / GCSE Attainment - charts 15
- 2009 Narrowing The Attainment Gap – county level..... 19
- Autumn Term 2009 – Primary School District Absence Summary 20
- Autumn Term 2009 – Secondary School District Absence Summary 21
- NEET Figures By Ethnicity - March 2010..... 22
- 2009 Pupil Attitude Survey..... 23

Note:

This version of the booklet has been produced for audiences external to Hampshire County Council.

The difference between internal and external versions is where small numbers are concerned. To prevent the identification of individuals, wherever a cohort contains 5 or fewer pupils the cohort size is shown simply as <5, and the corresponding percentage of total is blanked out. In instances where there is only one ethnic group with fewer than 5 people, the exact number in the next smallest group is also hidden. Wherever showing cohort size as <5 is not sufficient to protect identities, small cohort sizes show as <10.

Summary

There are currently 748 ethnic minority children and young people (C&YP) at schools within Fareham, which represents 4.9% of the district, up from 4.6% last year.

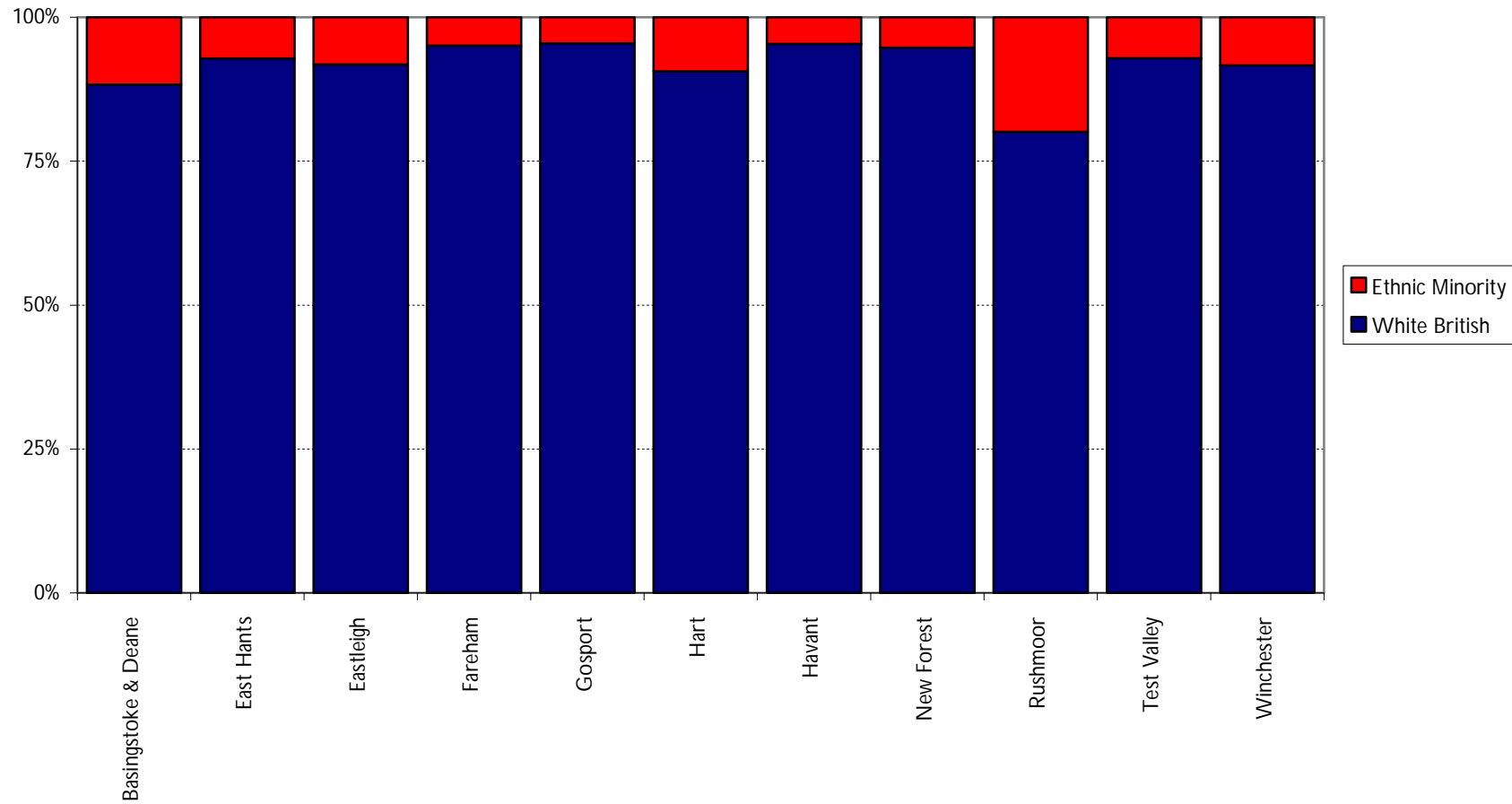
Ethnic minority C&YP from Fareham schools account for 5.5% of the overall total for the county.

There are currently 50 different languages spoken by C&YP within the district (48 last year).

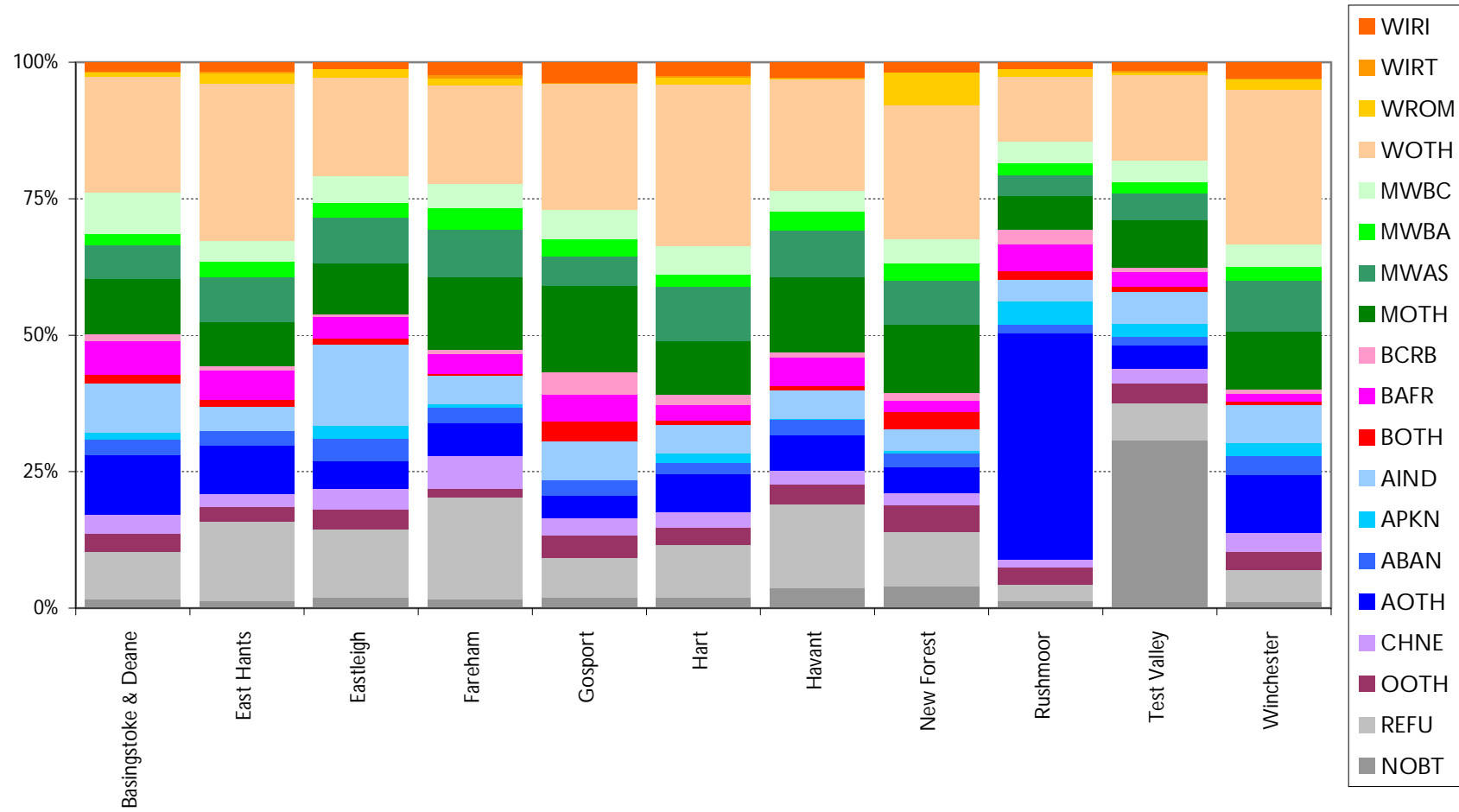
1.7% of the pupils have English as an additional language (1.6% last year).

Ethnic Minority Summary Charts

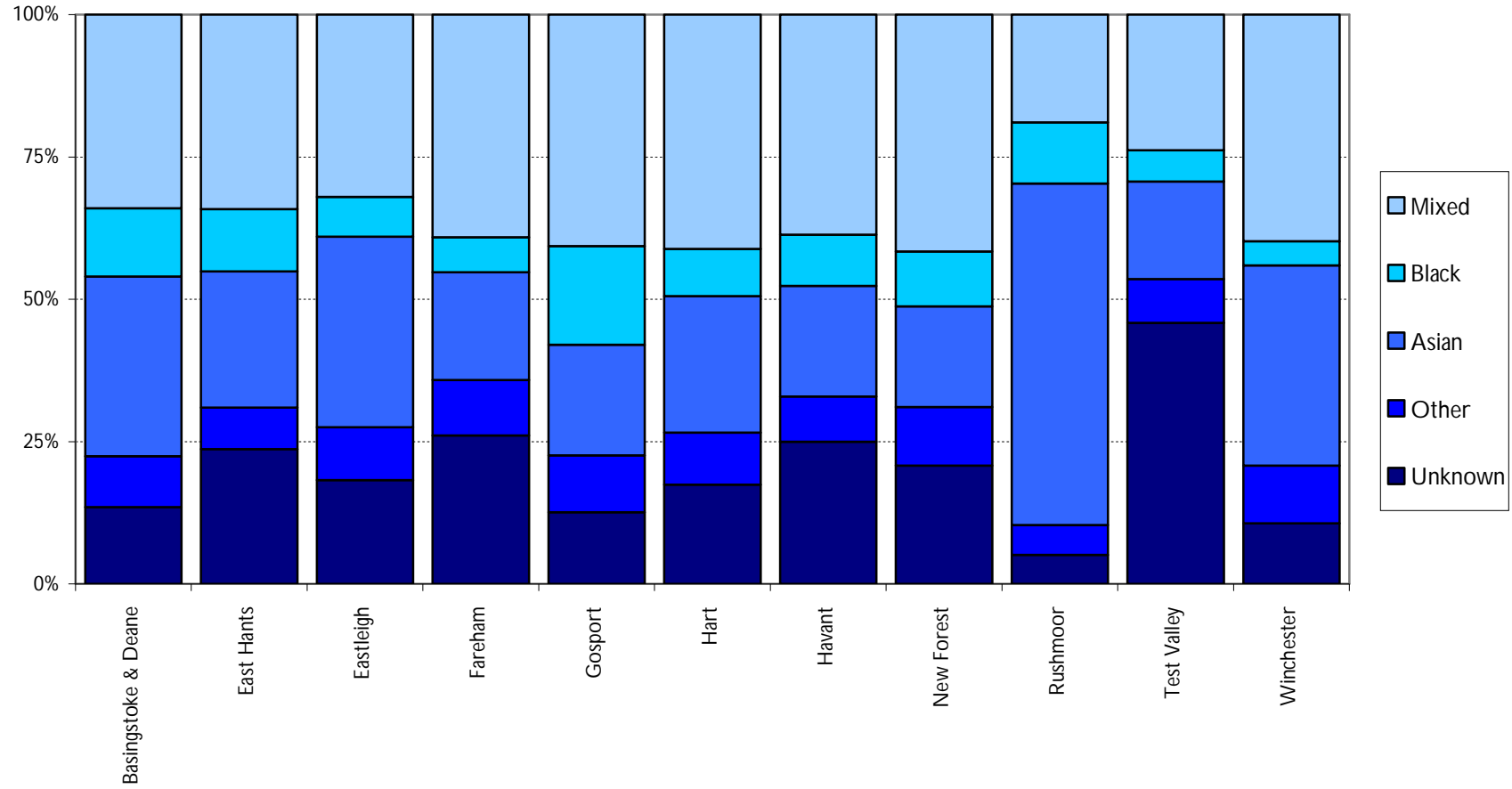
Ethnic Minority Pupils at Hampshire state-maintained schools, split by school district



Ethnic Minority Pupils at Hampshire state-maintained schools, split by school district



Ethnic Minority Pupils at Hampshire state-maintained schools, split by school district



Ethnic Minority Summary

This table gives an ethnicity breakdown of the pupils attending a Hampshire maintained school within the district.

Ethnicity of Children in Hampshire Schools January 2010

Fareham Pupils In District = 15,299

Ethnicity	Number of Children	% of District
White-British (WBRI)	14,361	93.9%
White-Irish (WIRI)	22	0.1%
Gypsy Roma (WROM)	11	0.1%
Traveller Irish Heritage (WIRT)	<10	-
White-Any Other White (WOTH)	170	1.1%
Mixed-White Asian (MWAS)	81	0.5%
Mixed-White Black African (MWBA)	38	0.2%
Mixed-White Black Caribbean (MWBC)	41	0.3%
Mixed-Other (MOTH)	125	0.8%
Asian/Asian British-Bangladeshi (ABAN)	26	0.2%
Asian/Asian British-Indian (AIND)	48	0.3%
Asian/Asian British-Pakistani (APKN)	7	0.0%
Asian/Asian British-Other (AOTH)	57	0.4%
Black/Black British-Caribbean (BCRB)	7	0.0%
Black/Black British-African (BAFR)	35	0.2%
Black/Black British-Other (BOTH)	<10	-
Chinese (CHNE)	56	0.4%
Any Other Ethnic Group (OOTH)	15	0.1%
Not Obtained (NOBT)	16	0.1%
Refused (REFU)	174	1.1%
Total Ethnic Minority Pupils	748	4.9%

Notes:

Any ethnicity group not included in the following categories has been counted as an ethnic minority:- WBRI, REFU, NOBT

Includes pupils in all Hampshire Nursery, Primary, Secondary and Special schools. If a pupil is dually registered they will be counted once at each school attended.

This data is accurate as of the 22nd February 2010 and was taken from the January 2009 School Census. The numbers were compiled before the DCSF duplicate pupil checking exercise.

Languages Summary

This table details the first languages spoken by the children attending a Hampshire maintained school within the district.

First Language of Children in Hampshire Schools January 2010

Fareham		Total Pupils in District =	15,293	
Language	Principally Where Spoken	Number of Children	% of District	
English	England	15,023	98.2%	
Chinese	China, Taiwan	42	0.3%	
Other than English		29	0.2%	
Bengali	Bangladesh	20	0.1%	
Malayalam	India	16	0.1%	
Polish	Poland	16	0.1%	
Arabic	Middle East also North Africa	15	0.1%	
Believed to be Other than English		12	0.1%	
French	France, Canada	10	0.1%	
Believed to be English		8	0.1%	
Persian/Farsi	Iran, Afghanistan	8	0.1%	
Afrikaans	South Africa	<5	-	
Spanish	Spain, Columbia, Mexico	<5	-	
Turkish	Turkey	<5	-	
Ebira	Nigeria	<5	-	
Gujarati	India	<5	-	
Portuguese	Portugal, Brazil	<5	-	
Russian	Russia	<5	-	
Swedish	Sweden	<5	-	
Tamil	Sri Lanka	<5	-	
Yoruba	Nigeria	<5	-	
Bemba	Zambia, Rep of Congo	<5	-	
Italian	Italy	<5	-	
Japanese	Japan	<5	-	
Konkani	India	<5	-	
Lithuanian	Lithuania	<5	-	
Shona	Zimbabwe	<5	-	
Urdu	Pakistan	<5	-	
British Sign Language		<5	-	
German	Germany	<5	-	
Icelandic	Iceland	<5	-	
Information not obtained		<5	-	
Nepali	Nepal	<5	-	
Panjabi	India	<5	-	
Romanian	Romania	<5	-	

Thai	Thailand	<5	-
Bulgarian	Bulgaria	<5	-
Czech	Czech Republic	<5	-
Dutch/Flemish	Netherlands	<5	-
Greek	Greece	<5	-
Hindi	India	<5	-
Hungarian	Hungary	<5	-
Kannada	India	<5	-
Kazakh	Kazakhstan	<5	-
Maltese	Malta	<5	-
Marathi	India	<5	-
Ndebele	Zimbabwe	<5	-
Refused		<5	-
Telugu	India	<5	-
West-African Pidgin English	Nigeria, Cameroon	<5	-
Total EAL Pupils		257	1.7%
% of Total Hants EAL Children		4%	

These total excludes the following Language groupings:

Believed To Be English	English
British Sign Language	Information not obtained
Classification Pending	Refused

Notes:

These figures include all pupils in Nursery, Primary, Secondary and Special schools. If a pupil is dually registered they will be counted once at each school attended.

This data are accurate as of the March 1, 2010 and were taken from the January 2010 School Census.

New Referrals

This table shows the number of new referrals made to EMTAS from the district during the period April 2009 to March 2010. New arrivals are broken down by language, which is usually more readily available to schools than ethnicity when referrals are made.

Language	Number of Referrals	% of district referrals	% of all Hampshire EMTAS referrals
Polish	<5	<20%	<1%
Bengali	<5	<20%	<1%
Chinese	<5	<20%	<1%
English	<5	<20%	<1%
Japanese	<5	<20%	<1%
Arabic	<5	<20%	<1%
Farsi	<5	<20%	<1%
Malayalam	<5	<20%	<1%
Nepali	<5	<20%	<1%
Portuguese	<5	<20%	<1%
Russian	<5	<20%	<1%
Telugu	<5	<20%	<1%
Fareham Total	22	100%	3.1%

New Year-R Pupils

This table gives an ethnicity breakdown of the current 'Year R' intake for the district.

District: Fareham		
Ethnicity	Number of Year R Pupils	% of All Year R Pupils
White - British	1,151	92.8%
White - Irish	<5	-
Gypsy Roma (WROM)	<5	-
Traveller Irish Heritage (WIRT)	<5	-
Any Other White Background	13	1.0%
White and Asian	7	0.6%
White and Black African	<5	-
White and Black Caribbean	6	0.5%
Any Other Mixed Background	20	1.6%
Bangladeshi	<5	-
Indian	<5	-
Pakistani	<5	-
Any Other Asian Background	<5	-
Black - Caribbean	<5	-
Black - African	<5	-
Any Other Black Background	<5	-
Chinese	<5	-
Any Other Ethnic Group	<5	-
Information Not Yet Obtained	5	0.4%
Refused	10	0.8%
Total Year R Pupils	1,240	100%
Total Ethnic Minority Year R Pupils	74	5.97%

Notes:

The 'Total Ethnic Minorities' figure excludes 'White British', 'Information Not Obtained' and 'Refused'.

This data were taken from the January 2010 School Census and include all 'Year R' pupils within the district as of January 21, 2010

Year R children shown here are included within the figures shown in the ethnic minority summary earlier in the booklet. They are show here to highlight potentially new ethnic groups or languages which may not have previously been identified.

2009 Foundation Stage Profile Attainment – Table

% of pupils achieving 6 or more points

Fareham		Personal, Social and Emotional Development			Communication, Language and Literacy				Problem solving, reasoning and numeracy			Knowledge & understanding of world			78+ overall and 6+ in all PSE and CLL		
	Num of Pupils	Disposition & Attitudes	Social Development	Emotional Development	Language for Communication & Thinking	Linking sounds and letters	Reading	Writing	Numbers as labels and for counting	Calculating	Shapes Space and Measures	Physical development	creative development	PSE and CLL	Achievement Gap		
Hampshire		90%	85%	79%	84%	73%	73%	61%	90%	76%	83%	83%	89%	81%	51%	33%	
England		89%	83%	79%	82%	74%	72%	62%	88%	73%	82%	81%	90%	80%	52%	34%	
White - British	1,148	94%	91%	87%	91%	84%	82%	70%	93%	85%	90%	89%	93%	89%	White	62%	29%
White - Irish	<10	100%	100%	100%	100%	100%	100%	100%	100%	100%	100%	100%	100%	100%			
Gypsy / Roma	<10	100%	100%	100%	100%	50%	50%	50%	50%	50%	50%	100%	100%	100%			
Traveller of Irish Heritage	<10																
Any Other White Background	16	88%	81%	81%	69%	81%	81%	69%	81%	63%	81%	75%	100%	88%			
White and Black Caribbean	<10	100%	80%	60%	80%	100%	100%	80%	100%	80%	100%	80%	100%	100%			
White and Black African	<10	100%	100%	100%	100%	100%	100%	100%	100%	100%	100%	100%	100%	100%			
White and Asian	11	100%	100%	100%	100%	91%	100%	82%	100%	91%	100%	100%	100%	100%			
Any Other Mixed Background	<10	88%	75%	75%	75%	63%	63%	50%	63%	63%	75%	75%	75%	75%			
Black - Caribbean	<10	100%	100%	100%	100%	67%	67%	67%	100%	100%	100%	100%	100%	100%			
Black - African	<10	100%	100%	100%	100%	0%	100%	100%	100%	100%	100%	100%	100%	100%			
Any Other Black Background	<10	100%	100%	100%	100%	100%	0%	100%	100%	100%	100%	100%	100%	100%			
Indian	<10	100%	100%	50%	100%	100%	75%	50%	100%	100%	75%	50%	75%	75%			
Pakistani	<10	100%	100%	100%	100%	100%	100%	100%	100%	100%	100%	100%	100%	100%			
Bangladeshi	<10	86%	86%	86%	71%	86%	71%	71%	86%	86%	86%	86%	100%	86%			
Any Other Asian Background	<10	100%	100%	71%	100%	86%	57%	57%	100%	86%	57%	86%	86%	86%			
Chinese	<10	100%	100%	100%	80%	80%	100%	80%	100%	100%	80%	80%	100%	80%			
Any Other Ethnic Group	<10	100%	100%	100%	100%	100%	100%	100%	100%	100%	100%	100%	100%	100%			
Information Not Yet Obtained	13	85%	69%	77%	77%	85%	69%	69%	77%	69%	77%	85%	77%	85%			
Refused	<10	100%	100%	86%	100%	86%	100%	100%	100%	100%	100%	100%	100%	100%			
Total	1,245	94%	91%	87%	91%	84%	82%	71%	92%	84%	90%	88%	93%	89%	63%	29%	

Notes

England data as published by DCSF

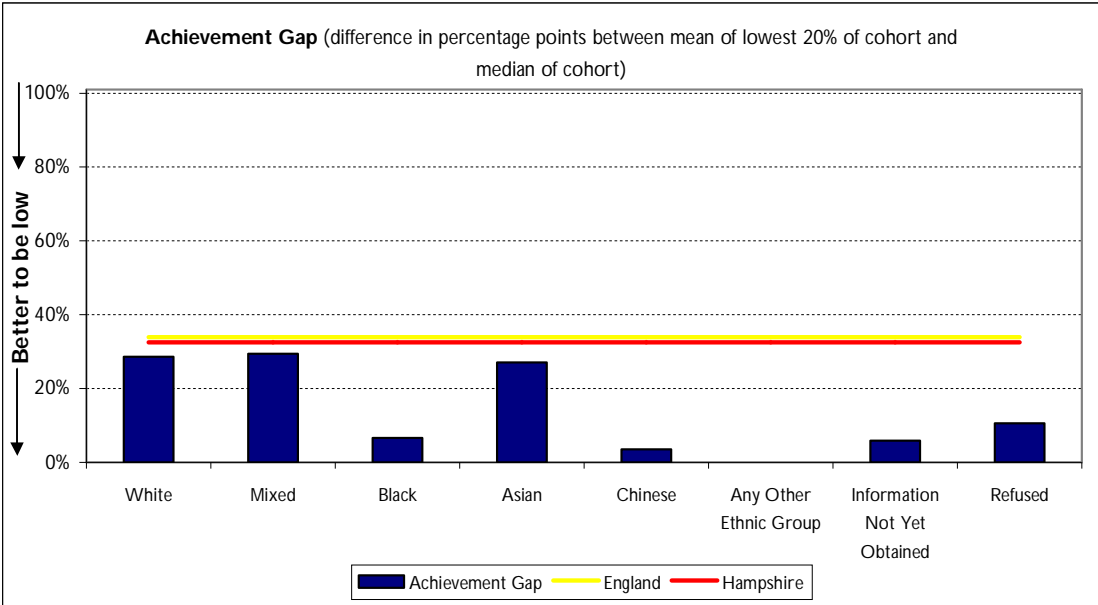
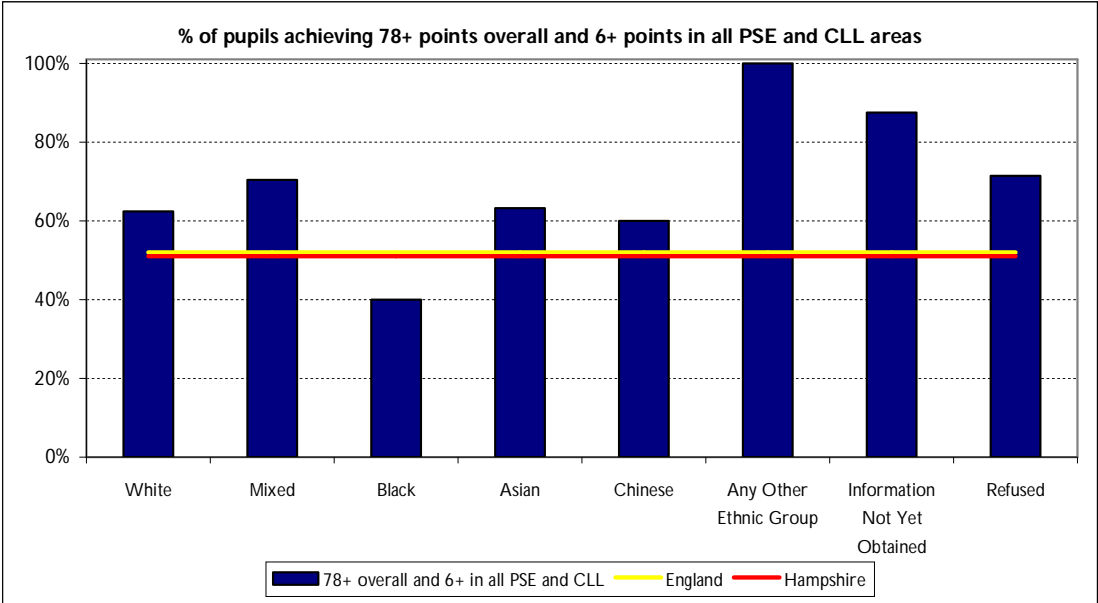
DCSF: Early Years Foundation Stage Profile Results in England, 2008/09 (14 October 2009)

Hampshire data and ethnicity breakdowns created from Hampshire held results data

Keypas export 28/9/09

Achievement gap is the percentage gap in achievement between the lowest 20% of achieving children in a local authority (mean), and the score of the median child in the same authority expressed as a percentage of the median score

2009 Foundation Stage Profile Attainment - Charts



2009 Key Stage / GCSE Attainment - table

Fareham

	Key Stage 1 (Provisional)					Key Stage 2 (Provisional)					Key Stage 3 (Provisional)				Key Stage 4 GCSE (Provisional)			
	Num of Pupils	Reading % L2+	Writing % L2+	Maths % L2+	Science % L2+	Num of Pupils	English % L4+	Maths % L4+	English AND Maths % L4+	Science % L4+	Num of Pupils	English % L5+	Maths % L5+	Science % L5+	Num of Pupils	% 5+ A-C	% 5+ A-C (Inc Eng & Maths)	% Eng AND Maths A*-C
Hampshire		88%	85%	92%	94%		82%	81%	75%	91%		79%	81%	83%		70%	55%	56%
England		84%	81%	89%	89%		80%	79%	72%	88%						70%	50%	55%
White - British	1,085	91%	88%	92%	95%	1,192	85%	84%	78%	92%	1,702	82%	81%	82%	1,269	68%	54%	55%
White - Irish	<10	100%	100%	100%	100%	<10	75%	75%	75%	75%	<10	75%	100%	75%	<10			
Gypsy / Roma	<10	0%	0%	0%	0%	<10	0%	0%	0%	100%	<10	0%	0%	100%	<10			
Traveller of Irish Heritage	<10					<10					<10				<10			
Any Other White Background	16	94%	88%	94%	88%	14	93%	86%	86%	86%	13	67%	75%	75%	<10	50%	50%	50%
White and Black Caribbean	<10	100%	100%	100%	100%	<10	67%	100%	67%	67%	<10	50%	50%	50%	<10	100%	100%	100%
White and Black African	<10					<10	100%	100%	100%	100%	<10	100%	89%	89%	<10	100%	100%	100%
White and Asian	<10	80%	80%	80%	80%	<10	100%	100%	100%	86%	<10	100%	100%	100%	<10	75%	75%	75%
Any Other Mixed Background	<10	88%	88%	88%	88%	14	86%	86%	86%	100%	<10	75%	75%	83%	<10	71%	43%	43%
Black - Caribbean	<10	100%	0%	100%	100%	<10					<10				<10			
Black - African	<10	100%	100%	100%	100%	<10	100%	80%	80%	100%	<10	80%	40%	40%	<10	33%	0%	0%
Any Other Black Background	<10					<10	0%	0%	0%	0%	<10	100%	100%	100%	<10	67%	33%	33%
Indian	<10	100%	100%	100%	100%	<10	86%	86%	86%	86%	<10	67%	33%	33%	<10	67%	33%	33%
Pakistani	<10	100%	100%	100%	100%	<10	100%	100%	100%	100%	<10				<10			
Bangladeshi	<10	100%	100%	50%	100%	<10	100%	100%	100%	100%	<10	0%	0%	0%	<10	0%	0%	0%
Any Other Asian Background	<10	50%	50%	50%	75%	<10	50%	50%	50%	50%	<10	75%	75%	75%	<10	100%	100%	100%
Chinese	<10	78%	78%	89%	78%	<10	75%	88%	75%	88%	<10	83%	83%	83%	<10			
Any Other Ethnic Group	<10	100%	100%	100%	100%	<10	50%	100%	50%	100%	<10	50%	75%	25%	<10	100%	0%	0%
Information Not Yet Obtained	<10					<10					12	33%	33%	67%	<10			
Refused	12	92%	83%	100%	100%	33	79%	79%	73%	91%	12	83%	83%	100%	11	55%	36%	36%
Total	1,158	91%	88%	92%	95%	1,298	84%	84%	78%	92%	1,805	81%	80%	81%	1,280	68%	54%	54%

Notes

England and Hampshire data as published by DCSF

DCSF: National Curriculum Assessments at Key Stage 1 in England, 2009 (25 August 2009)

DCSF: National Curriculum Assessments at Key Stage 2 in England 2008/09 (Revised) (1 December 2009)

(KS3 data not available nationally - taken from Hampshire held results data)

DCSF: GCSE and Equivalent Results in England, 2008/09 (Provisional) (15 October 2009)

Ethnicity breakdowns created from Hampshire held results data

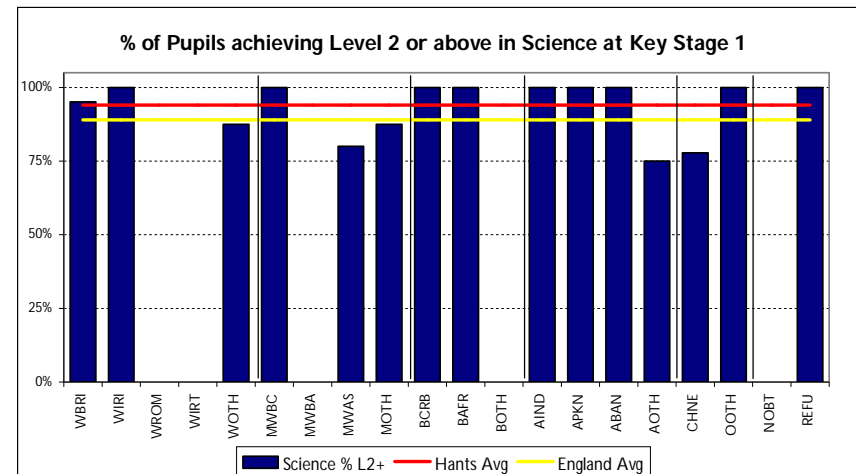
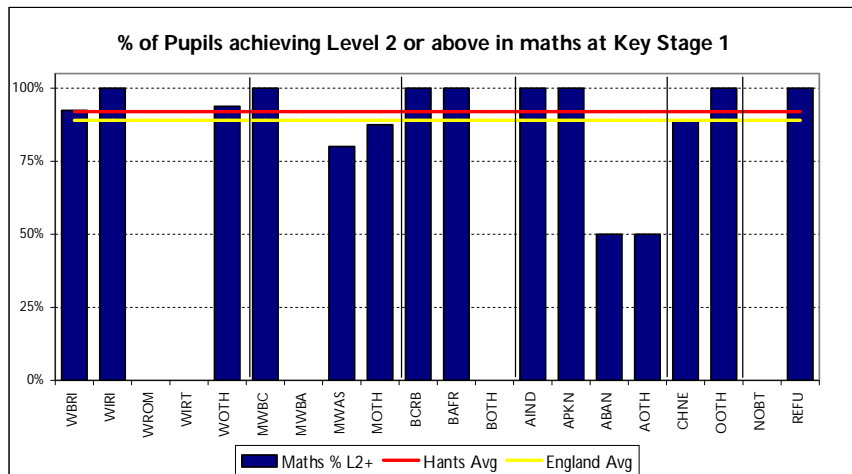
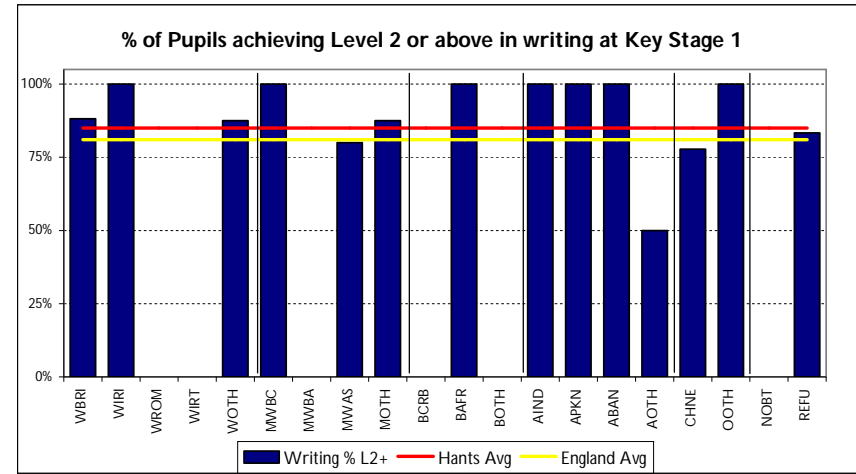
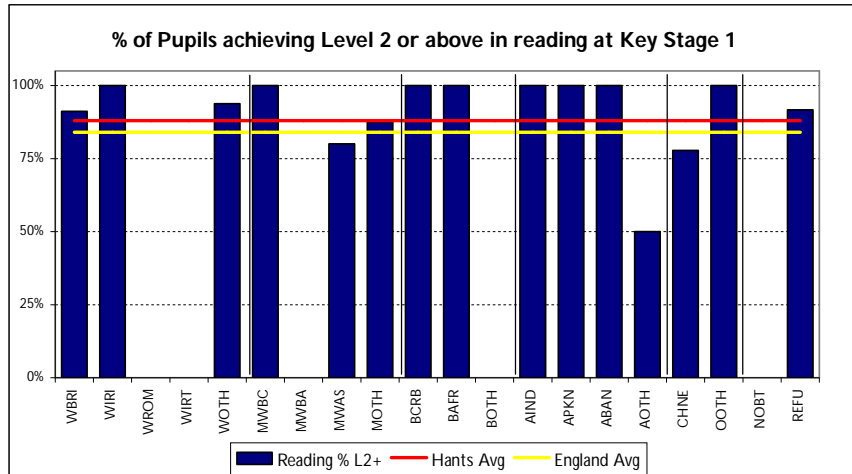
KS1 from Keygas export 17/8/09

KS2 from Keygas export 4/3/10

KS3 from Keygas export 4/3/10

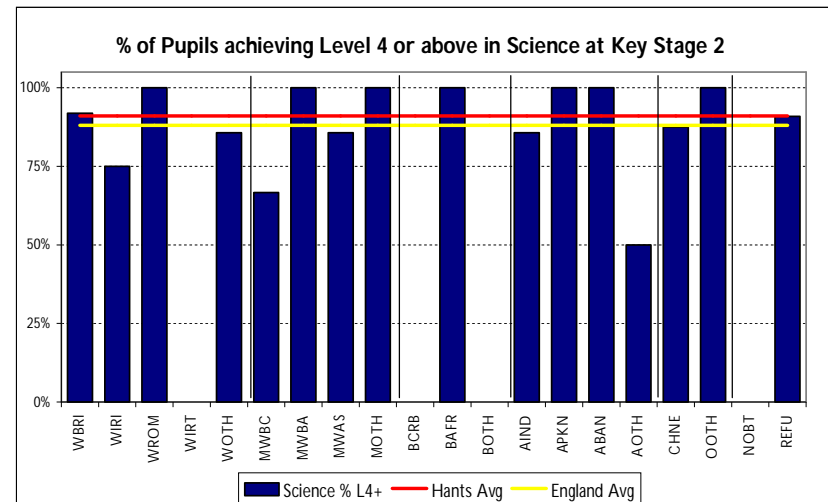
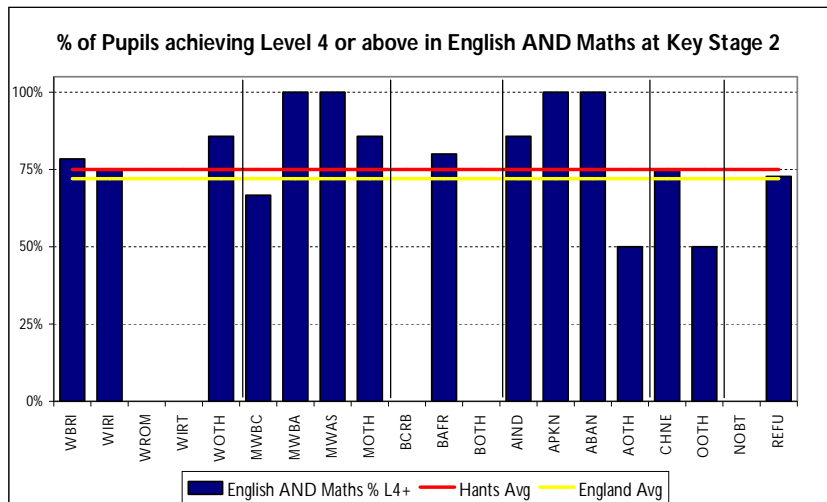
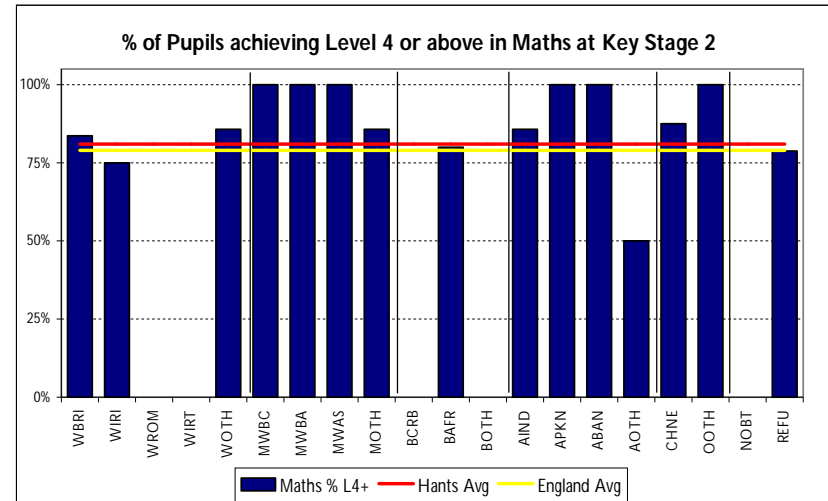
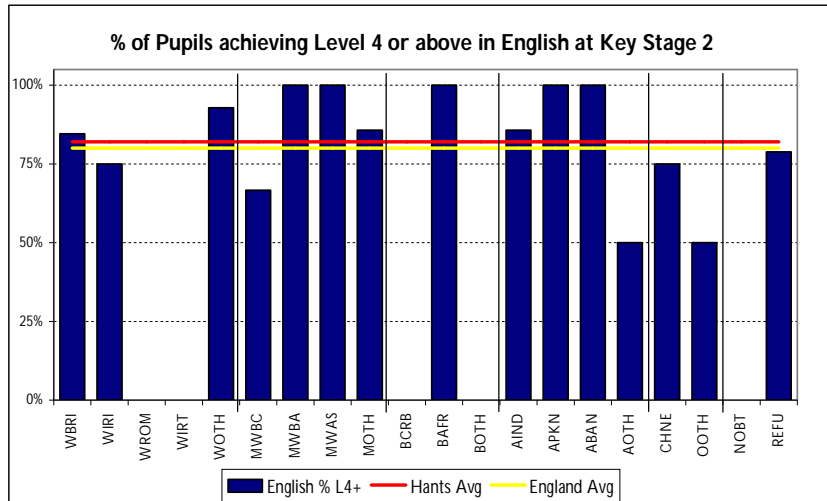
GCSE as at 4/3/10 as held in EPAS

2009 Key Stage / GCSE Attainment - charts



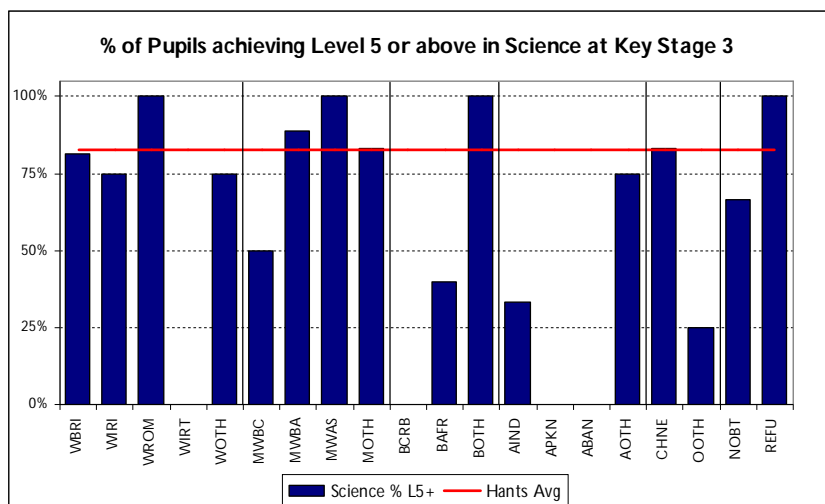
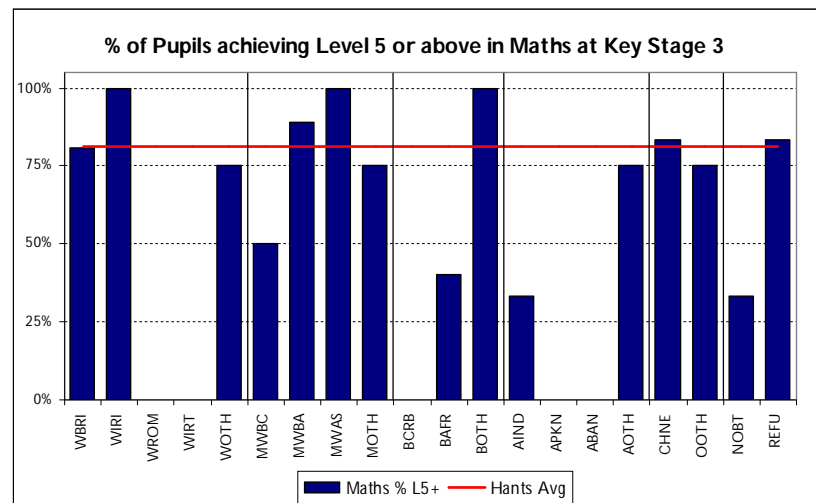
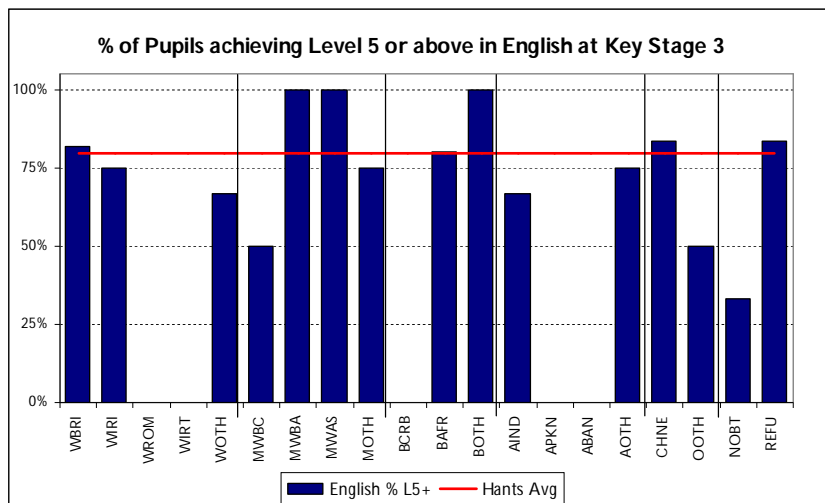
Key Stage 2 attainment charts

District-level: Fareham

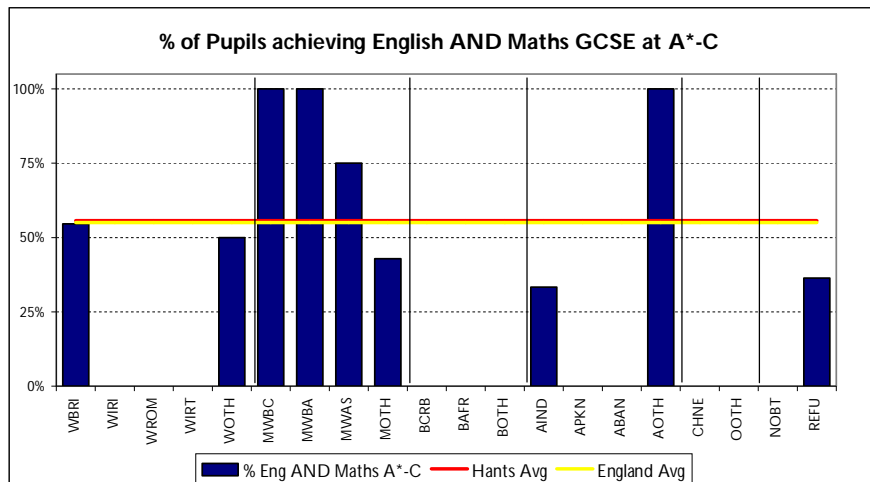
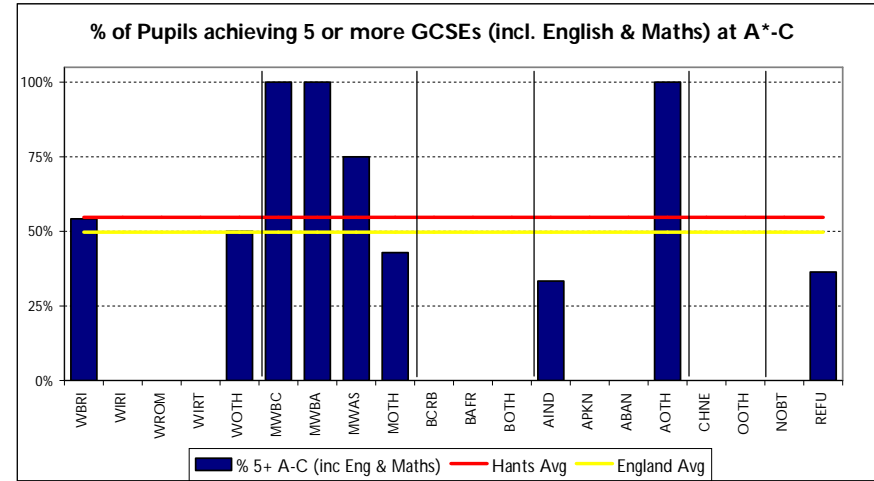
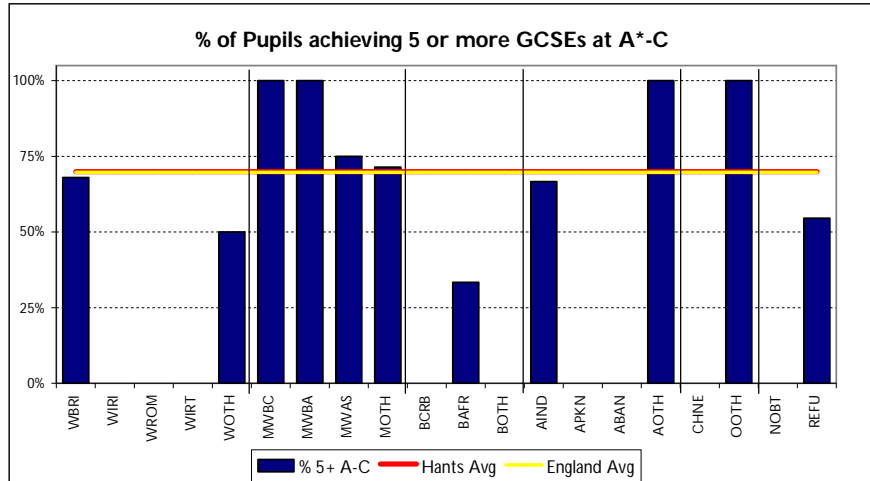


Key Stage 3 attainment charts

District-level: Fareham



Key Stage 4 (GCSE) attainment charts
District-level: Fareham



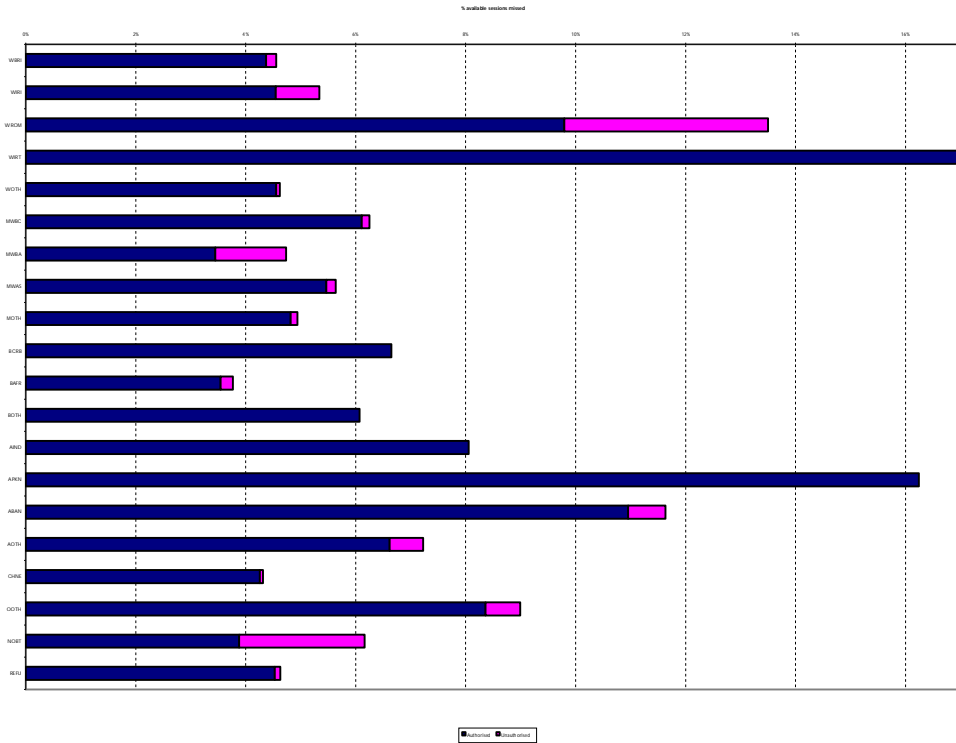
2009 Narrowing The Attainment Gap – county level

This chart displays the difference in percentage points between each ethnic group and White British in the percentage of pupils achieving the standard at each key-stage. The figures are averaged over a three year period (2007-2009) to smooth out fluctuations in low numbers.

	Key Stage 1			Key Stage 2			Key Stage 3			Key Stage 4	
	Reading Level	Writing Level	Maths Level	English Level	Maths Level	Science Level	English Level	Maths Level	Science Level	% 5+ A-C	% 5+ A-C (inc Eng & Maths)
	2+	2+	2+	4+	4+	4+	5+	5+	5+	% 5+ A-C	% 5+ A-C (inc Eng & Maths)
White - Irish	6	4	5	6	8	5	1	2	3	5	7
Gypsy / Roma	-45	-36	-38	-34	-33	-18	-51	-54	-54	-53	-57
Traveller of Irish Heritage	-75	-72	-17	-21	-44	-38	-61	-64	-29	-53	-55
Any Other White Background	-5	-4	-1	-3	4	0	-1	3	1	3	3
White and Black Caribbean	1	2	3	-3	-1	-1	4	3	5	-2	-1
White and Black African	0	-4	1	-1	-2	4	11	3	-1	2	12
White and Asian	4	6	2	7	6	5	8	9	9	20	15
Any Other Mixed Background	0	0	-1	3	1	2	3	4	3	4	5
Black - Caribbean	1	-2	-2	-10	-18	-4	-14	-23	-16	-20	-19
Black - African	-4	-6	-5	-7	-15	-7	1	-3	-3	-4	-3
Any Other Black Background	2	-1	2	-11	-18	-7	-2	-21	-19	-28	-18
Indian	4	3	1	9	11	6	13	12	7	23	17
Pakistani	1	-1	-2	-13	-9	-15	2	-3	-6	19	18
Bangladeshi	-5	-1	-8	-4	-14	-2	-4	-11	-11	-6	-5
Any Other Asian Background	-4	-5	-2	-18	-10	-12	-17	-9	-18	-20	-9
Chinese	0	1	2	3	10	0	2	16	7	27	24
Any Other Ethnic Group	-6	-7	-5	-6	0	1	-14	-14	-17	-6	-3
Information Not Yet Obtained	-23	-24	-11	-4	-8	1	-17	-15	-20	-25	-25
Refused	-3	-3	-1	-2	0	0	-7	-7	-6	-11	-11

Autumn Term 2009 – Primary School District Absence Summary

Fareham	No of pupils	Available sessions	Total Absence	Authorised absence	Un- authorised absence
White - British	7,035	968,917	4.6%	4.4%	0.2%
White - Irish	10	1,386	5.3%	4.5%	0.8%
Gypsy / Roma	<5	-	13.5%	9.8%	3.7%
Traveller of Irish Heritage	<5	-	65.1%	64.3%	0.7%
Any Other White Background	90	12,294	4.6%	4.6%	0.1%
White and Black Caribbean	21	2,912	6.3%	6.1%	0.1%
White and Black African	19	2,322	4.7%	3.4%	1.3%
White and Asian	42	5,872	5.6%	5.5%	0.2%
Any Other Mixed Background	66	8,962	4.9%	4.8%	0.1%
Black - Caribbean	<5	-	6.6%	6.6%	0.0%
Black - African	13	1,806	3.8%	3.5%	0.2%
Any Other Black Background	<5	-	6.1%	6.1%	0.0%
Indian	29	4,022	8.1%	8.1%	0.0%
Pakistani	<5	-	16.2%	16.2%	0.0%
Bangladeshi	16	2,218	11.6%	11.0%	0.7%
Any Other Asian Background	34	4,442	7.2%	6.6%	0.6%
Chinese	26	3,594	4.3%	4.3%	0.1%
Any Other Ethnic Group	8	1,112	9.0%	8.4%	0.6%
Information Not Yet Obtained	7	876	6.2%	3.9%	2.3%
Refused	37	4,858	4.6%	4.5%	0.1%
District total	7,473	1,028,331	4.7%	4.5%	0.2%



Notes

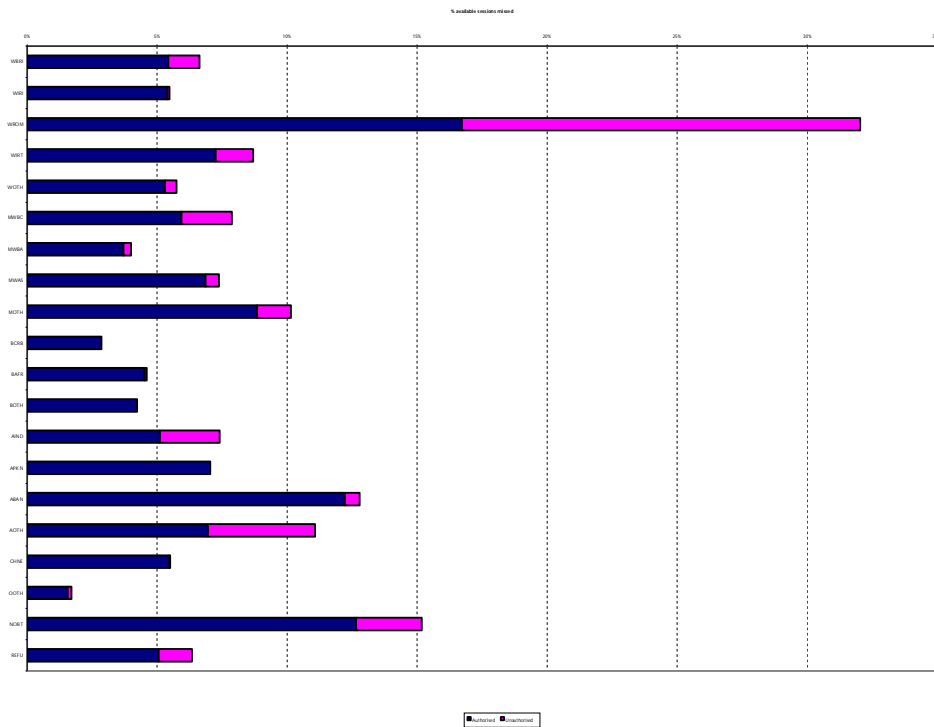
Data taken from the January 2010 school census

Includes all pupils who attended a school during the autumn term

Chart is scaled to show detail for most groups. As there are only one WIRT pupils, the chart has not been scaled for this category.

Autumn Term 2009 – Secondary School District Absence Summary

Fareham	No of pupils	Available sessions	Total Absence	Authorised absence	Un-authorised absence
White - British	5,926	823,681	6.6%	5.4%	1.2%
White - Irish	9	1,260	5.5%	5.4%	0.1%
Gypsy / Roma	<5	-	32.0%	16.7%	15.3%
Traveller of Irish Heritage	<5	-	8.7%	7.2%	1.4%
Any Other White Background	62	8,593	5.7%	5.3%	0.4%
White and Black Caribbean	11	1,550	7.9%	5.9%	1.9%
White and Black African	20	2,803	4.0%	3.7%	0.3%
White and Asian	29	4,081	7.4%	6.9%	0.5%
Any Other Mixed Background	38	5,324	10.1%	8.8%	1.3%
Black - Caribbean	<5	-	2.9%	2.9%	0.0%
Black - African	18	2,303	4.6%	4.5%	0.1%
Any Other Black Background	<5	-	4.2%	4.2%	0.0%
Indian	13	1,823	7.4%	5.1%	2.3%
Pakistani	<5	-	7.0%	7.0%	0.0%
Bangladeshi	5	704	12.8%	12.2%	0.6%
Any Other Asian Background	16	2,257	11.1%	7.0%	4.1%
Chinese	26	3,652	5.5%	5.5%	0.0%
Any Other Ethnic Group	<5	-	1.7%	1.6%	0.1%
Information Not Yet Obtained	6	830	15.2%	12.7%	2.5%
Refused	131	17,956	6.3%	5.1%	1.3%
District total	6,324	878,729	6.7%	5.5%	1.2%



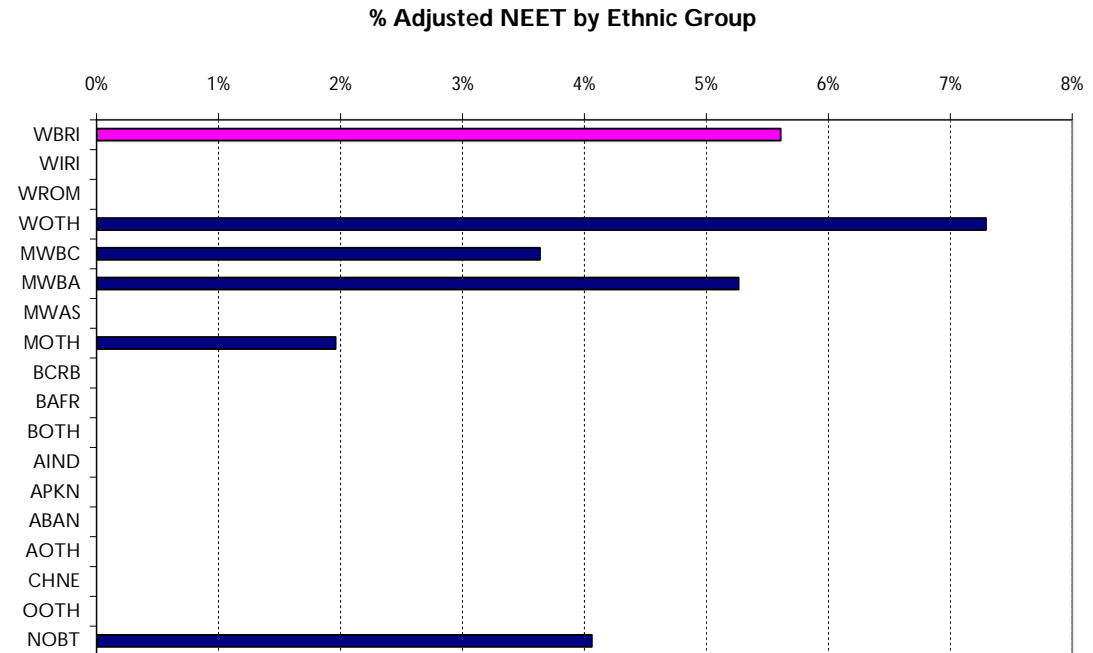
Notes

Data taken from the January 2010 school census

Includes all pupils who attended a school during the autumn term

NEET Figures By Ethnicity - March 2010

Fareham	Monthly	Monthly	Monthly	% adjusted
	average	average	average	
	adjusted	adjusted	District	
	NEETs	EETs	Total	NEET
Hampshire				6.3%
England				6.7%
White - British	240.7	4,049.3	4,290.0	5.6%
White - Irish	<5	-	-	0.0%
Gypsy / Roma	<5	-	-	
Any Other White Background	<5	-	-	7.3%
White and Black Caribbean	<5	-	-	3.6%
White and Black African	<5	-	-	5.3%
White and Asian	<5	-	-	0.0%
Any Other Mixed Background	<5	-	-	2.0%
Black - Caribbean	<5	-	-	0.0%
Black - African	<5	-	-	0.0%
Any Other Black Background	<5	-	-	
Indian	<5	-	-	0.0%
Pakistani	<5	-	-	0.0%
Bangladeshi	<5	-	-	0.0%
Any Other Asian Background	<5	-	-	0.0%
Chinese	<5	-	-	0.0%
Any Other Ethnic Group	<5	-	-	0.0%
Information Not Yet Obtained	21.7	512.0	533.7	4.1%
Total	270	4,746	5,016	5.4%



Notes

Data source:

Hampshire and England data: DCSF January Risk Scan table

District-level and ethnic split: Hampshire CorePlus 8/3/10

Comparisons with the Hampshire figure are for illustration purposes only. They should be treated with caution due to differences in calculation methods at district and county level.

Ethnicity comparisons are with White-British

Raw NEET figures are adjusted to allow for young people whose records have expired.

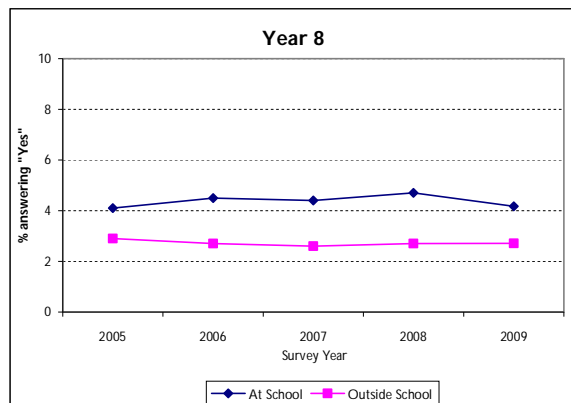
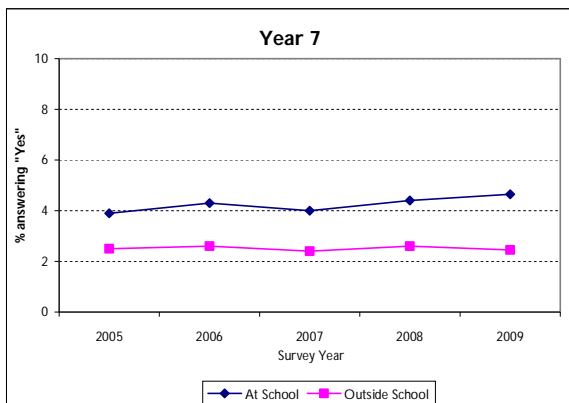
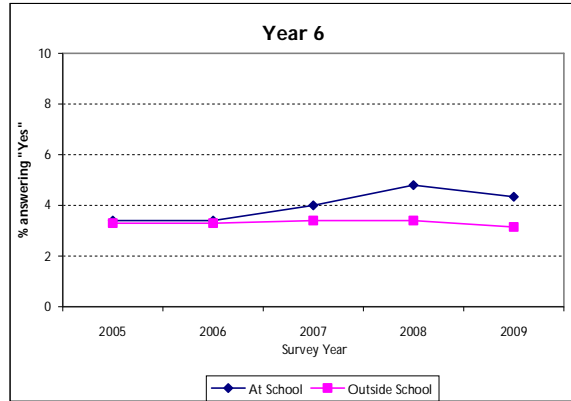
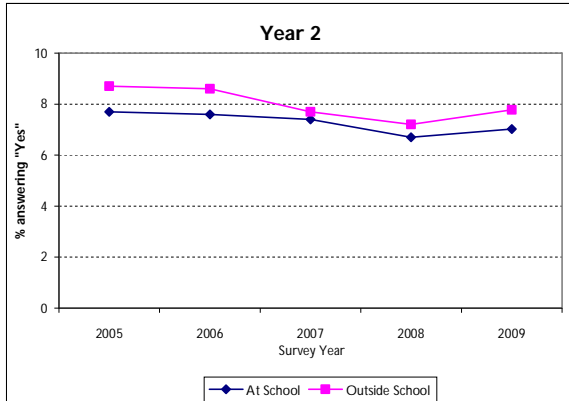
2009 Pupil Attitude Survey

Pupil Attitude Survey - bullying due to discrimination

Part A) I have been bullied **at school** on the basis of my race/religion/language*

Part B) I have been bullied **outside school** on the basis of my race/religion/language*

Hampshire-county level, trend by yeargroup



District vs Hampshire 2009

