



2009/10
Data information booklet for

Havant

(external audience version)

Hampshire Ethnic Minority and
Traveller Achievement Service

Equality, Excellence, Diversity

*Compiled for EMTAS by Hampshire Data
and Information Team (DaIT) 2010*



For further information please visit www.hants.gov.uk/education/ema

Contents

- Summary 3
- Ethnic Minority Summary Charts..... 4
- Ethnic Minority Summary 7
- Languages Summary 8
- New Referrals..... 10
- New Year-R Pupils 11
- 2009 Foundation Stage Profile Attainment – Table..... 12
- 2009 Foundation Stage Profile Attainment - Charts..... 13
- 2009 Key Stage / GCSE Attainment - table 14
- 2009 Key Stage / GCSE Attainment - charts..... 15
- 2009 Narrowing The Attainment Gap – county level..... 19
- Autumn Term 2009 – Primary School District Absence Summary 20
- Autumn Term 2009 – Secondary School District Absence Summary..... 21
- NEET Figures By Ethnicity - March 2010..... 22
- 2009 Pupil Attitude Survey..... 23

Note:

This version of the booklet has been produced for audiences external to Hampshire County Council.

The difference between internal and external versions is where small numbers are concerned. To prevent the identification of individuals, wherever a cohort contains 5 or fewer pupils the cohort size is shown simply as <5, and the corresponding percentage of total is blanked out. In instances where there is only one ethnic group with fewer than 5 people, the exact number in the next smallest group is also hidden. Wherever showing cohort size as <5 is not sufficient to protect identities, small cohort sizes show as <10.

Summary

There are currently 682 ethnic minority children and young people (C&YP) at schools within Havant, which represents 4.6% of the district, (4.2% last year).

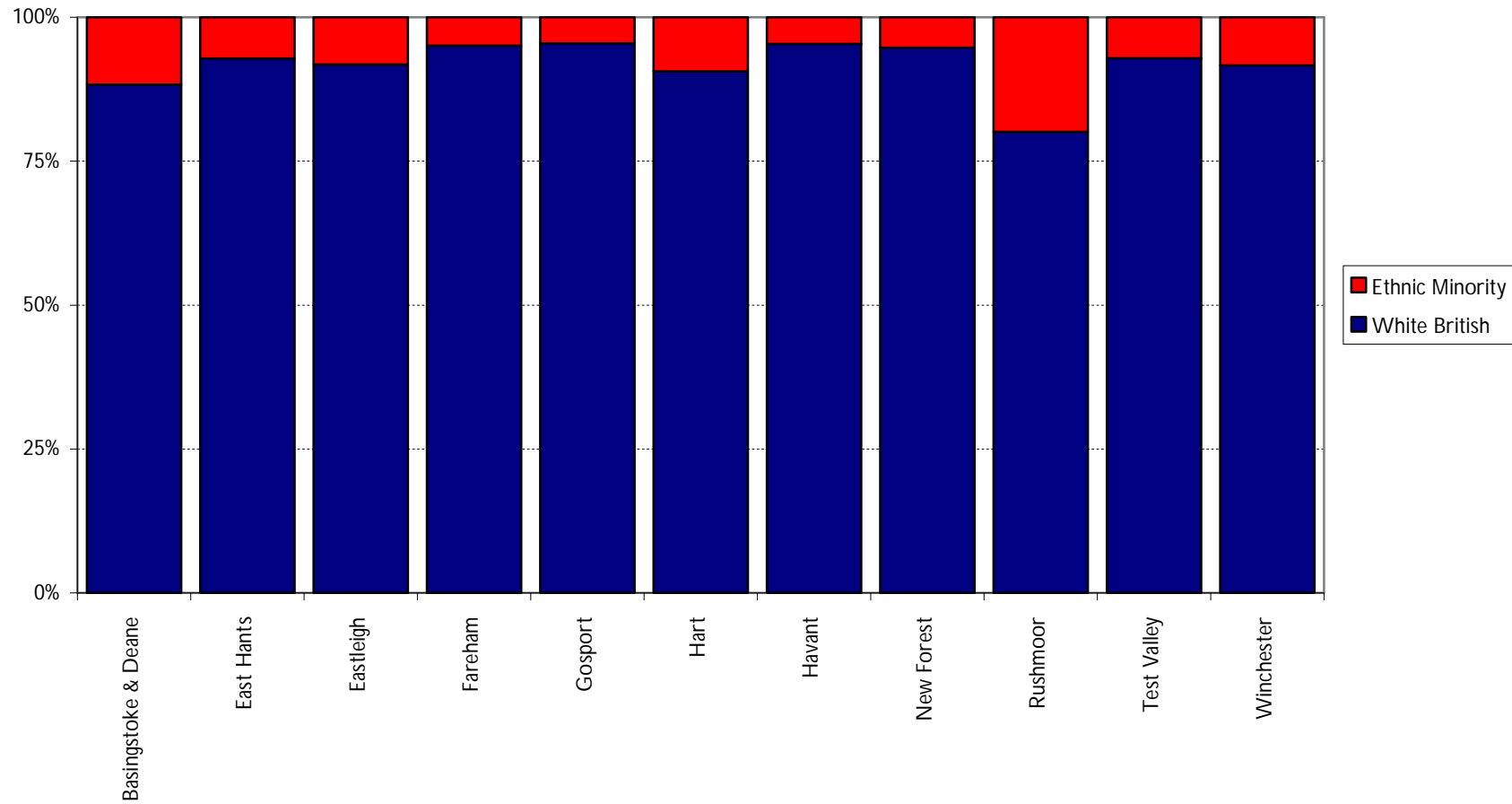
Ethnic minority C&YP from Havant schools account for 5.0% of the overall total for the county.

There are currently 50 different languages spoken by C&YP within the district, (48 last year)

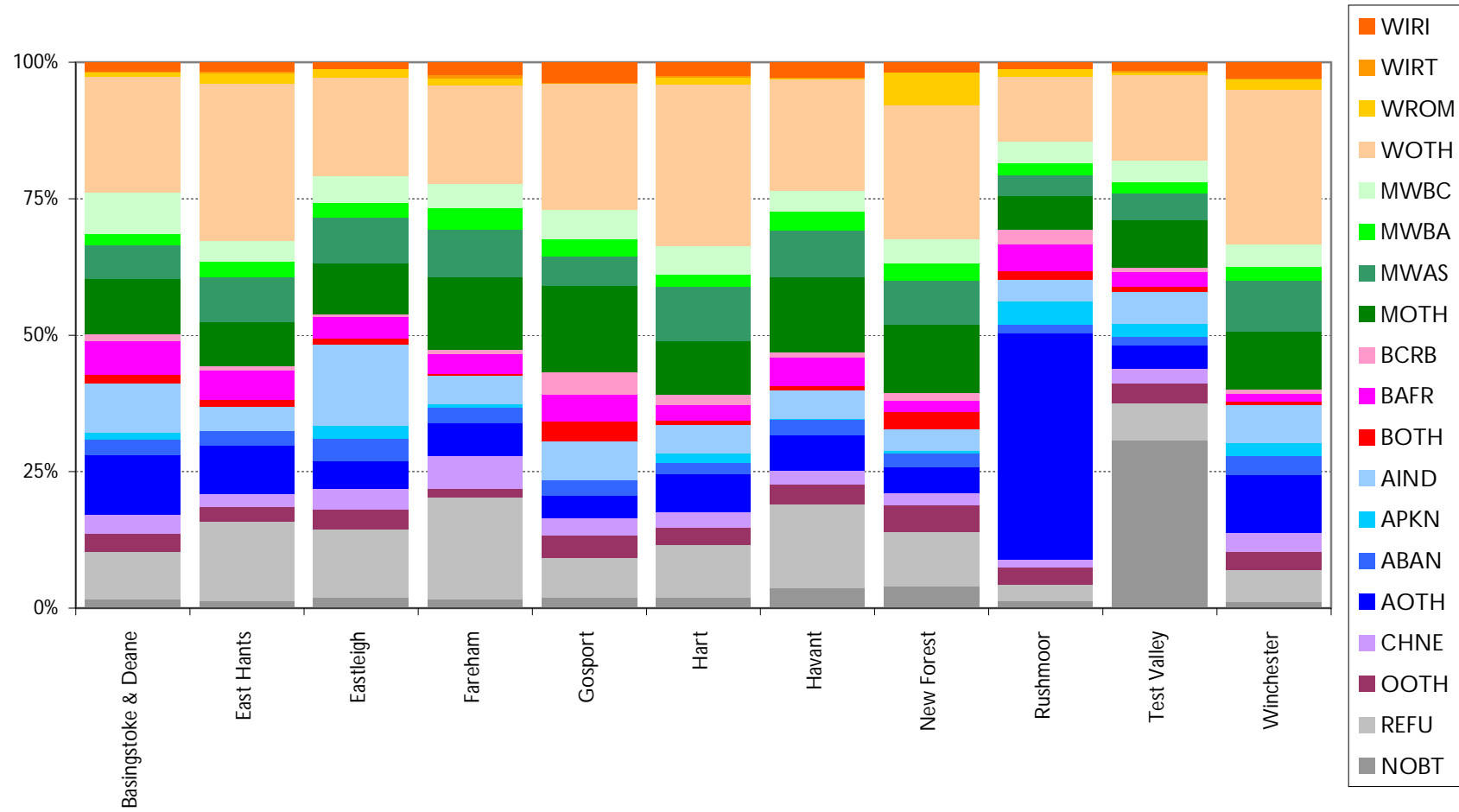
1.7% of the pupils have English as an additional language (1.5% last year).

Ethnic Minority Summary Charts

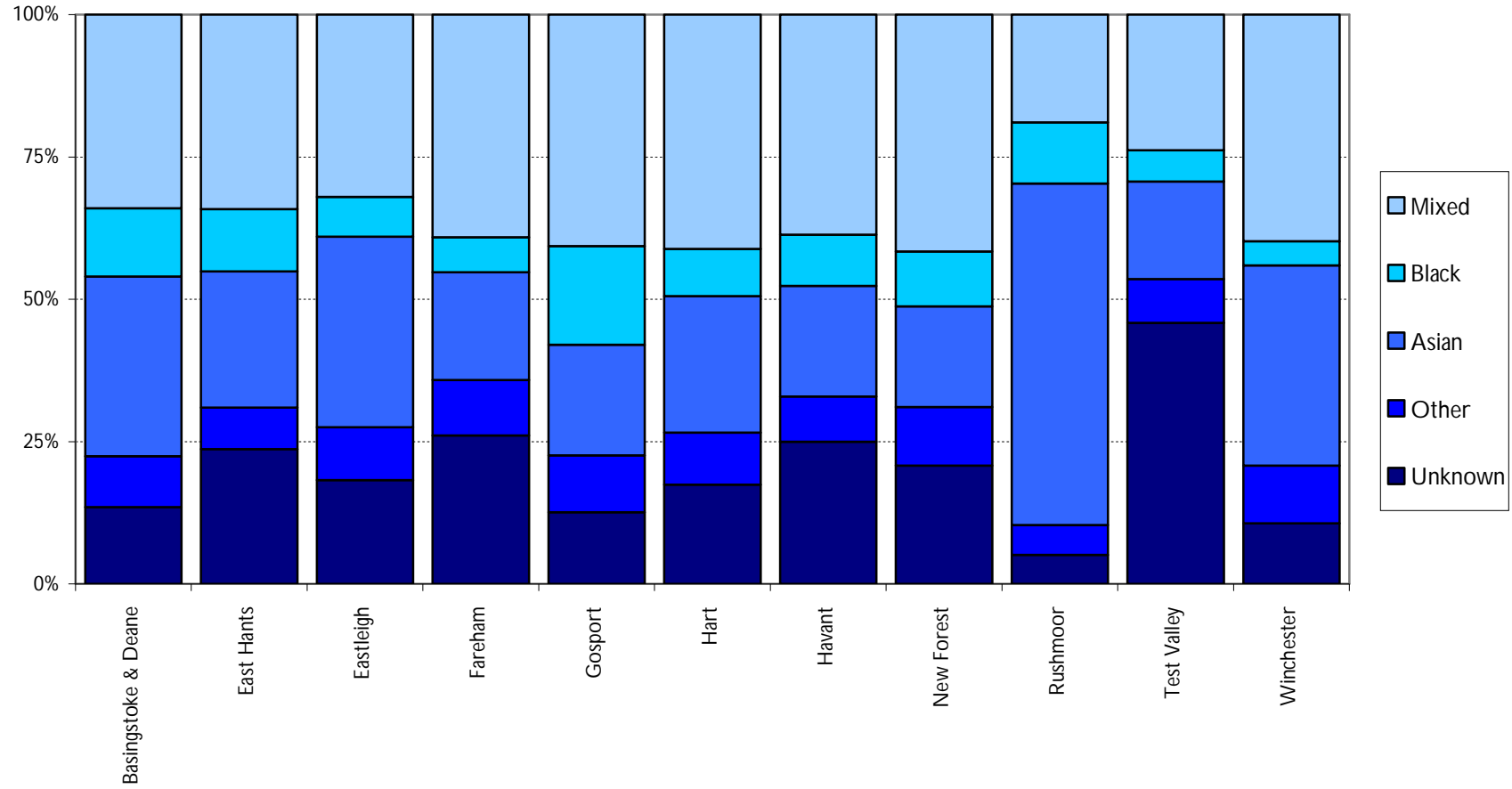
Ethnic Minority Pupils at Hampshire state-maintained schools, split by school district



Ethnic Minority Pupils at Hampshire state-maintained schools, split by school district



Ethnic Minority Pupils at Hampshire state-maintained schools, split by school district



Languages Summary

This table details the first languages spoken by the children attending a Hampshire maintained school within the district.

First Language of Children in Hampshire Schools January 2010

Havant	Total Pupils in District =	14,853	
Language	Principally Where Spoken	Number of Children	% of District
English	England	14,587	98.2%
Other than English		30	0.2%
Malayalam	India	23	0.2%
Bengali	Bangladesh	21	0.1%
Polish	Poland	20	0.1%
Spanish	Spain, Columbia, Mexico	19	0.1%
Tagalog/Filipino	Philippines	19	0.1%
Arabic	Middle East also North Africa	18	0.1%
Chinese	China, Taiwan	8	0.1%
French	France, Canada	8	0.1%
Shona	Zimbabwe	7	0.0%
Believed to be Other than English		6	0.0%
Portuguese	Portugal, Brazil	6	0.0%
Ebira	Nigeria	<5	-
German	Germany	<5	-
Gujarati	India	<5	-
Tamil	Sri Lanka	<5	-
Believed to be English		<5	-
Dutch/Flemish	Netherlands	<5	-
Panjabi	India	<5	-
Russian	Russia	<5	-
Urdu	Pakistan	<5	-
Romanian	Romania	<5	-
Thai	Thailand	<5	-
Akan	Ghana	<5	-
Classification Pending		<5	-
Hungarian	Hungary	<5	-
Igbo	Nigeria	<5	-
Information not obtained		<5	-
Italian	Italy	<5	-
Ndebele	Zimbabwe	<5	-
Pampangan	Philippines	<5	-
Yoruba	Nigeria	<5	-
Bulgarian	Bulgaria	<5	-
Cebuano/Sugbuanon	Philippines	<5	-

Dari Persian	Iran	<5	-
Efik-Ibibio	Nigeria	<5	-
Fijian	Fiji	<5	-
Greek	Greece	<5	-
Katchi	India	<5	-
Malay	Malaysia, Indonesia	<5	-
Maltese	Malta	<5	-
Pashto/Pakhto	Afghanistan, Pakistan	<5	-
Persian/Farsi	Iran, Afghanistan	<5	-
Refused		<5	-
Slovak	Slovakia	<5	-
Swazi/Siswati	Swaziland	<5	-
Vietnamese	Vietnam	<5	-
Welsh/Cymraeg	Wales	<5	-
Xhosa	South Africa	<5	-
Total EAL Pupils		257	1.7%
% of Total Hants EAL Children		4%	

These total excludes the following Language groupings:

Believed To Be English	English
British Sign Language	Information not obtained
Classification Pending	Refused

Notes:

These figures include all pupils in Nursery, Primary, Secondary and Special schools. If a pupil is dually registered they will be counted once at each school attended.

This data are accurate as of the March 1, 2010 and were taken from the January 2010 School Census.

New Referrals

This table shows the number of new referrals made to EMTAS from the district during the period April 2009 to March 2010. New arrivals are broken down by language, which is usually more readily available to schools than ethnicity when referrals are made.

Language	Number of Referrals	% of district referrals	% of all Hampshire EMTAS referrals
Arabic	19	48%	2.7%
Russian	<5	<15%	<1%
Romanian	<5	<15%	<1%
Farsi	<5	<15%	<1%
Malayalam	<5	<15%	<1%
Bengali	<5	<15%	<1%
Bulgarian	<5	<15%	<1%
Chinese	<5	<15%	<1%
Croatian	<5	<15%	<1%
Dari	<5	<15%	<1%
Maltese	<5	<15%	<1%
Polish	<5	<15%	<1%
Slovakian	<5	<15%	<1%
Spanish	<5	<15%	<1%
Havant Total	40	100%	5.6%

New Year-R Pupils

This table gives an ethnicity breakdown of the current 'Year R' intake for the district.

District: Havant		
Ethnicity	Number of Year R Pupils	% of All Year R Pupils
White - British	1,064	91.9%
White - Irish	<5	-
Gypsy Roma (WROM)	<5	-
Traveller Irish Heritage (WIRT)	<5	-
Any Other White Background	16	1.4%
White and Asian	9	0.8%
White and Black African	<5	-
White and Black Caribbean	<5	-
Any Other Mixed Background	<5	-
Bangladeshi	<5	-
Indian	<5	-
Pakistani	<5	-
Any Other Asian Background	<5	-
Black - Caribbean	<5	-
Black - African	<5	-
Any Other Black Background	<5	-
Chinese	<5	-
Any Other Ethnic Group	<5	-
Information Not Yet Obtained	24	2.1%
Refused	14	1.2%
Total Year R Pupils	1,158	100%
Total Ethnic Minority Year R Pupils	56	4.84

Notes:

The 'Total Ethnic Minorities' figure excludes 'White British', 'Information Not Obtained' and 'Refused'.

This data were taken from the January 2010 School Census and include all 'Year R' pupils within the district as of January 21, 2010

Year R children shown here are included within the figures shown in the ethnic minority summary earlier in the booklet. They are show here to highlight potentially new ethnic groups or languages which may not have previously been identified.

2009 Foundation Stage Profile Attainment – Table

% of pupils achieving 6 or more points

Havant	Num of Pupils	Personal, Social and Emotional Development			Communication, Language and Literacy				Problem solving, reasoning and numeracy			Knowledge & understanding of world	Physical development	creative development	78+ overall and 6+ in all PSE and CLL	Achievement Gap	
		Disposition & Attitudes	Social Development	Emotional Development	Language for Communication & Thinking	Linking sounds and letters	Reading	Writing	Numbers as labels and for counting	Calculating	Shapes Space and Measures						
Hampshire		90%	85%	79%	84%	73%	73%	61%	90%	76%	83%	83%	89%	81%	51%	33%	
England		89%	83%	79%	82%	74%	72%	62%	88%	73%	82%	81%	90%	80%	52%	34%	
White - British	1,092	84%	76%	67%	75%	63%	60%	47%	85%	66%	78%	76%	84%	74%	White	38%	36%
White - Irish	<10	100%	100%	100%	100%	100%	100%	100%	100%	100%	100%	100%	100%	100%			
Gypsy / Roma	<10																
Traveller of Irish Heritage	<10																
Any Other White Background	19	89%	89%	79%	89%	58%	68%	58%	89%	53%	84%	74%	89%	74%			
White and Black Caribbean	<10	100%	50%	100%	100%	50%	50%	50%	100%	50%	50%	50%	100%	50%			
White and Black African	<10	67%	67%	67%	67%	67%	67%	33%	67%	67%	67%	67%	67%	67%			
White and Asian	<10	100%	75%	75%	75%	50%	50%	50%	75%	50%	75%	100%	75%	100%			
Any Other Mixed Background	<10	100%	89%	89%	78%	67%	67%	56%	78%	78%	89%	100%	100%	100%			
Black - Caribbean	<10																
Black - African	<10	67%	67%	67%	33%	100%	67%	67%	100%	100%	100%	67%	67%	67%	Mixed	44%	45%
Any Other Black Background	<10	100%	100%	100%	100%	50%	100%	50%	50%	100%	100%	100%	100%	100%			
Indian	<10	100%	100%	100%	100%	100%	100%	100%	100%	100%	100%	100%	100%	100%	Black	40%	19%
Pakistani	<10																
Bangladeshi	<10	75%	50%	75%	75%	100%	75%	50%	100%	75%	100%	100%	100%	50%			
Any Other Asian Background	<10	83%	100%	83%	83%	67%	83%	83%	100%	83%	83%	83%	100%	100%			
Chinese	<10	100%	50%	50%	50%	50%	50%	50%	100%	50%	50%	50%	50%	50%	Asian	58%	30%
Any Other Ethnic Group	<10	100%	100%	100%	100%	75%	100%	75%	75%	75%	75%	100%	100%	100%			
Information Not Yet Obtained	<10	100%	100%	100%	100%	75%	50%	0%	100%	50%	100%	100%	100%	75%			
Refused	<10	100%	100%	100%	100%	100%	100%	67%	100%	100%	100%	100%	100%	100%	67%	0%	
Total	1,160	84%	77%	68%	76%	63%	61%	48%	86%	67%	79%	76%	84%	75%	38%	36%	

Notes

England data as published by DCSF

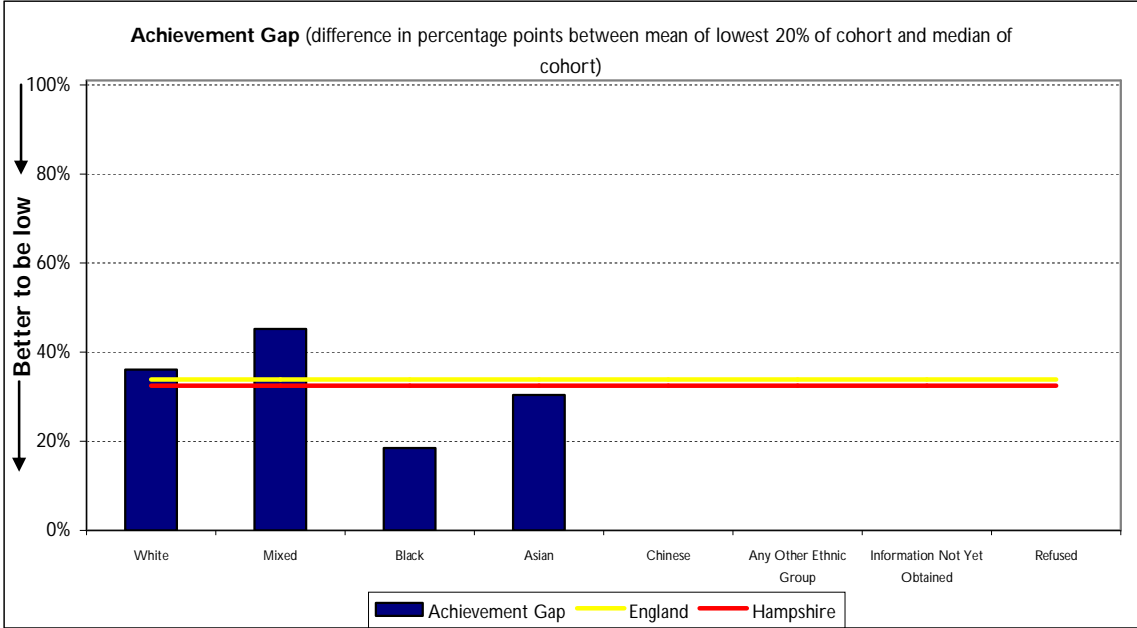
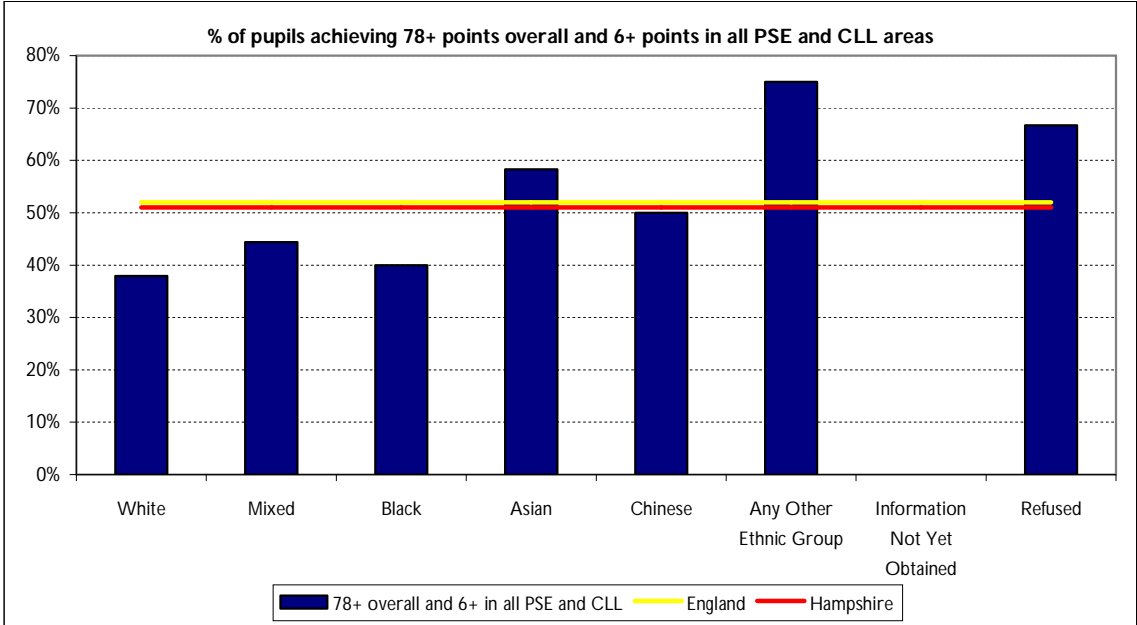
DCSF: Early Years Foundation Stage Profile Results in England, 2008/09 (14 October 2009)

Hampshire data and ethnicity breakdowns created from Hampshire held results data

Keypas export 28/9/09

Achievement gap is the percentage gap in achievement between the lowest 20% of achieving children in a local authority (mean), and the score of the median child in the same authority expressed as a percentage of the median score

2009 Foundation Stage Profile Attainment - Charts



2009 Key Stage / GCSE Attainment - table

Havant

	Key Stage 1 (Provisional)					Key Stage 2 (Provisional)					Key Stage 3 (Provisional)				Key Stage 4 GCSE (Provisional)			
	Num of Pupils	Reading % L2+	Writing % L2+	Maths % L2+	Science % L2+	Num of Pupils	English % L4+	Maths % L4+	English AND Maths % L4+	Science % L4+	Num of Pupils	English % L5+	Maths % L5+	Science % L5+	Num of Pupils	% 5+ A-C	% 5+ A-C (Inc Eng & Maths)	% Eng AND Maths A*-C
Hampshire		88%	85%	92%	94%		82%	81%	75%	91%		79%	81%	83%		70%	55%	56%
England		84%	81%	89%	89%		80%	79%	72%	88%						70%	50%	55%
White - British	1,227	81%	78%	88%	90%	1,415	71%	72%	62%	82%	1,433	74%	75%	71%	1,563	68%	47%	47%
White - Irish	<10	100%	100%	100%	100%	<10	100%	100%	100%	100%	<10	100%	100%	100%	<10			
Gypsy / Roma	<10	100%	100%	100%	100%	<10	0%	0%	0%	0%	<10				<10			
Traveller of Irish Heritage	<10					<10					<10				<10			
Any Other White Background	16	88%	94%	94%	94%	13	77%	85%	77%	85%	15	80%	80%	67%	14	79%	43%	43%
White and Black Caribbean	<10	100%	100%	100%	100%	<10	67%	100%	67%	100%	<10	50%	75%	25%	<10	67%	33%	33%
White and Black African	<10	50%	50%	100%	100%	<10	100%	67%	67%	100%	<10	100%	100%	100%	<10	100%	100%	100%
White and Asian	<10	100%	100%	100%	100%	<10	100%	100%	100%	100%	<10	88%	100%	100%	<10	100%	100%	100%
Any Other Mixed Background	<10	100%	100%	100%	100%	<10	80%	80%	70%	100%	<10	80%	80%	100%	<10	78%	67%	67%
Black - Caribbean	<10	100%	100%	100%	100%	<10	100%	100%	100%	100%	<10	80%	80%	100%	<10	100%	100%	100%
Black - African	<10	100%	100%	100%	100%	<10	67%	100%	67%	100%	<10	100%	100%	100%	10	70%	50%	60%
Any Other Black Background	<10					<10					<10				<10			
Indian	<10	83%	83%	83%	83%	<10	100%	0%	0%	100%	<10	50%	100%	50%	<10	50%	50%	50%
Pakistani	<10					<10					<10	100%	100%	100%	<10			
Bangladeshi	<10	75%	75%	75%	100%	<10	100%	100%	100%	100%	<10	100%	100%	100%	<10	100%	50%	50%
Any Other Asian Background	<10	0%	100%	0%	0%	<10	80%	80%	80%	80%	<10	50%	100%	50%	<10	75%	75%	75%
Chinese	<10	100%	100%	100%	100%	<10	0%	100%	0%	100%	<10	67%	100%	67%	<10	100%	100%	100%
Any Other Ethnic Group	<10	100%	100%	100%	50%	<10					<10	0%	0%	0%	<10	100%	0%	0%
Information Not Yet Obtained	<10					<10					<10	57%	57%	57%	<10			
Refused	<10	71%	86%	100%	86%	15	67%	73%	67%	73%	32	63%	66%	59%	15	47%	13%	13%
Total	1,283	81%	79%	88%	90%	1,483	71%	72%	62%	83%	1,538	73%	75%	70%	1,602	68%	47%	47%

Notes

England and Hampshire data as published by DCSF

DCSF: National Curriculum Assessments at Key Stage 1 in England, 2009 (25 August 2009)

DCSF: National Curriculum Assessments at Key Stage 2 in England 2008/09 (Revised) (1 December 2009)

(KS3 data not available nationally - taken from Hampshire held results data)

DCSF: GCSE and Equivalent Results in England, 2008/09 (Provisional) (15 October 2009)

Ethnicity breakdowns created from Hampshire held results data

KS1 from Keygas export 17/8/09

KS2 from Keygas export 4/3/10

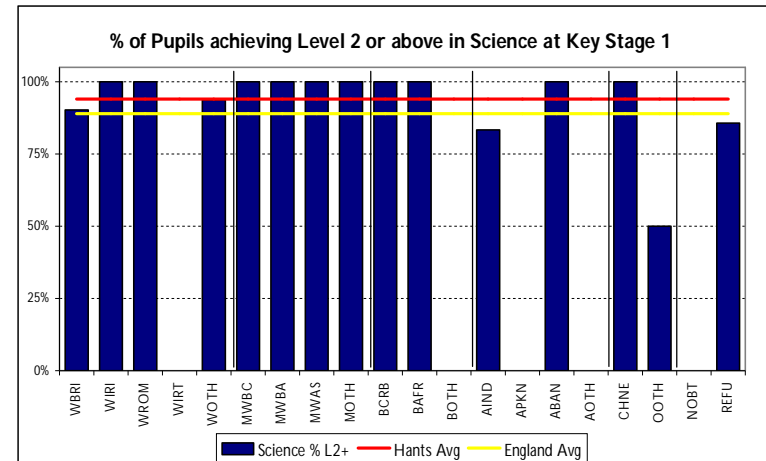
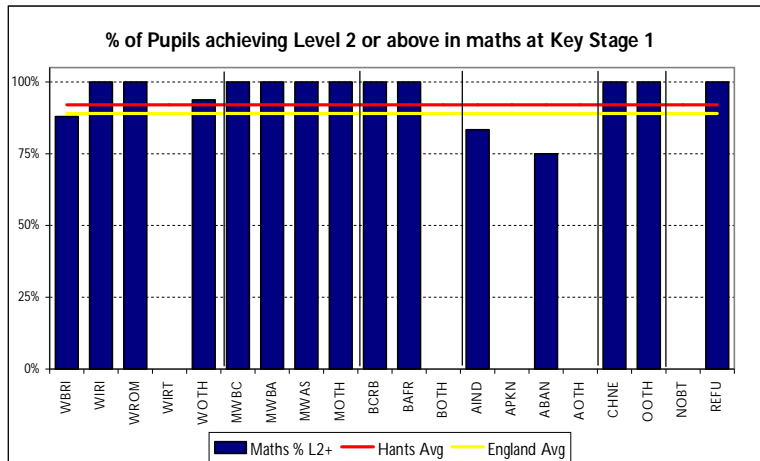
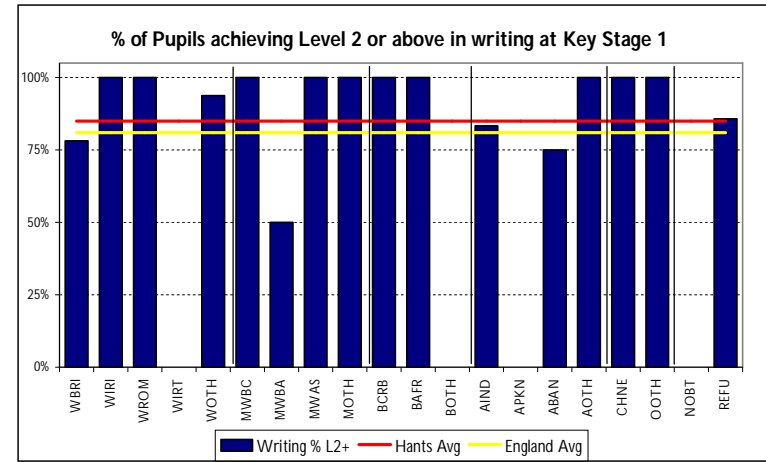
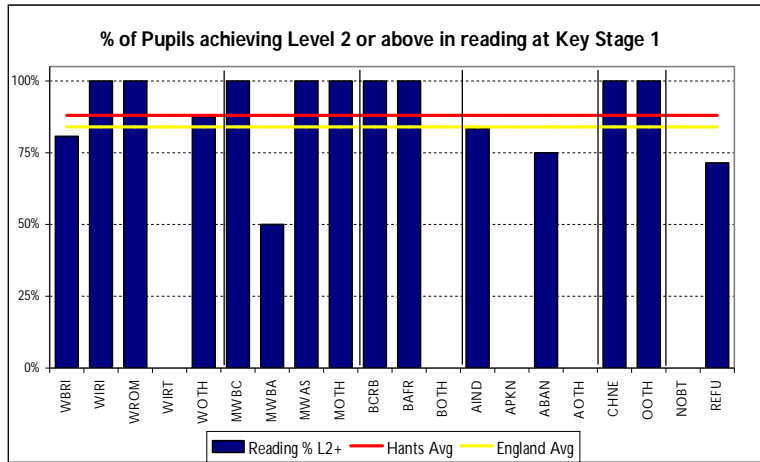
KS3 from Keygas export 4/3/10

GCSE as at 4/3/10 as held in EPAS

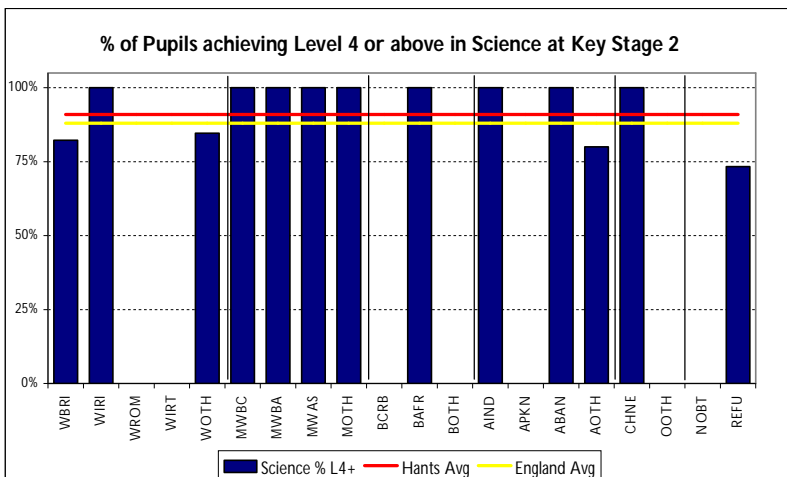
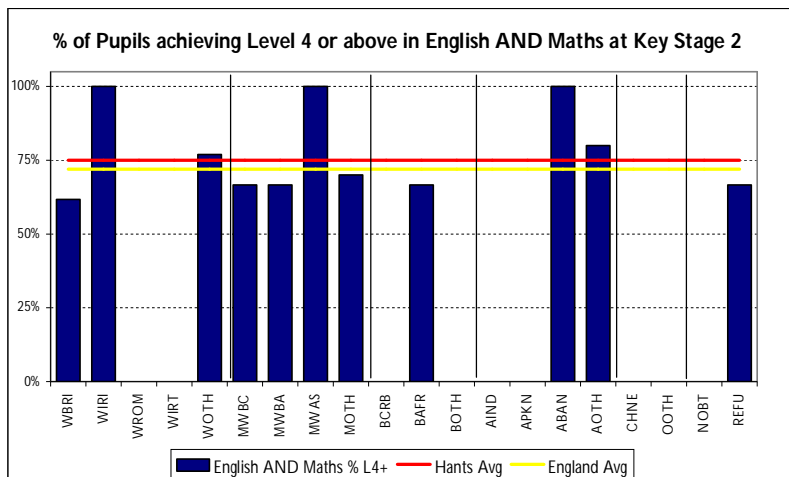
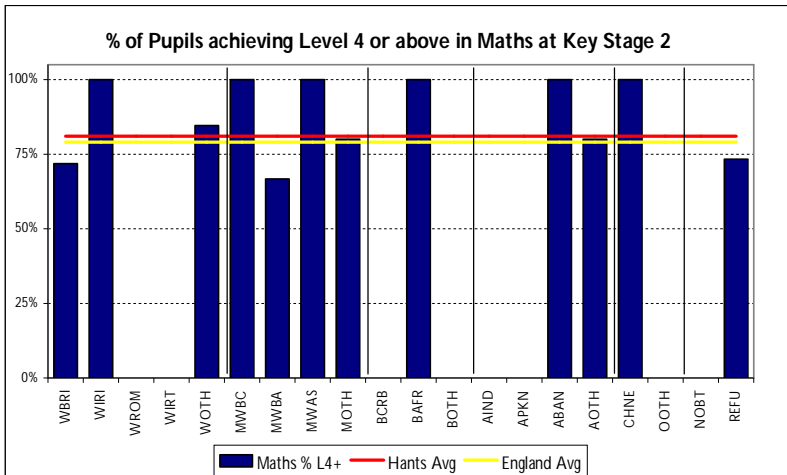
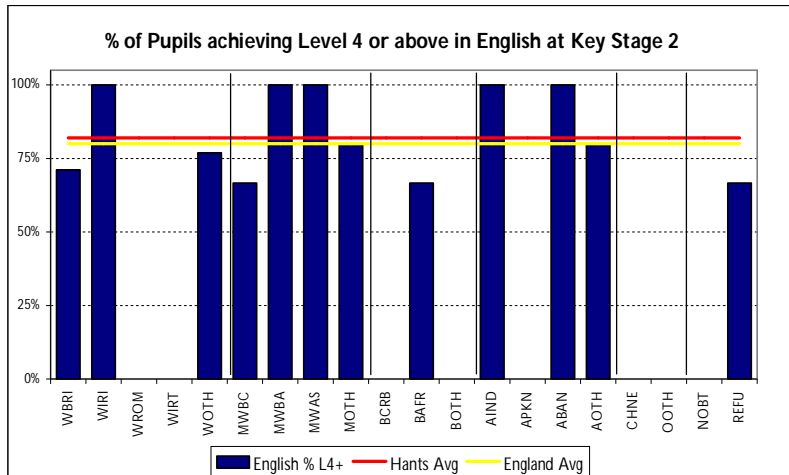
2009 Key Stage / GCSE Attainment - charts

Key Stage 1 attainment charts

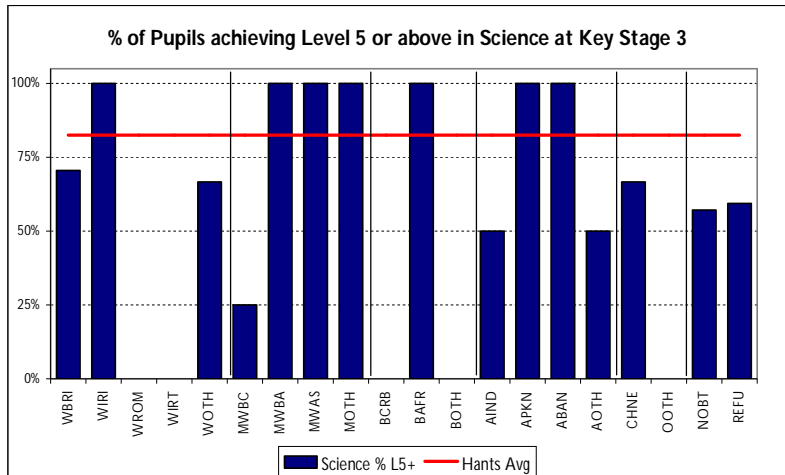
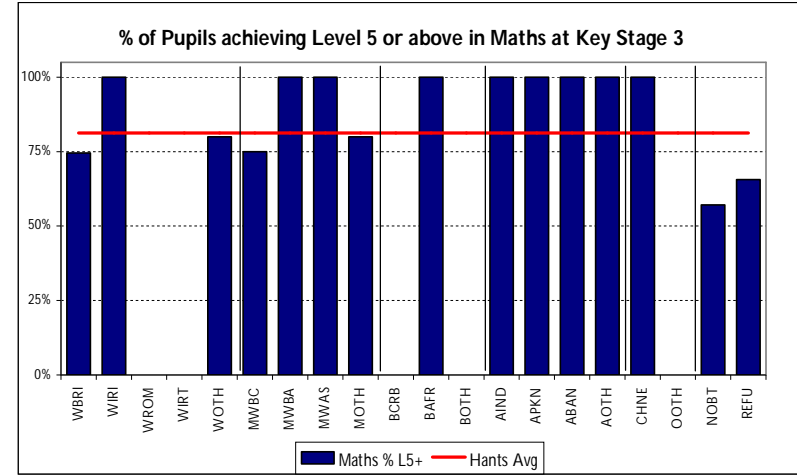
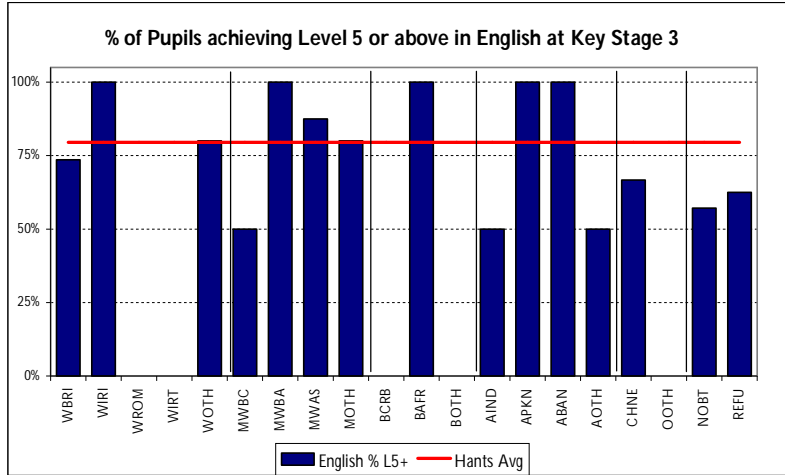
District-level: Havant



Key Stage 2 attainment charts
District-level: Havant

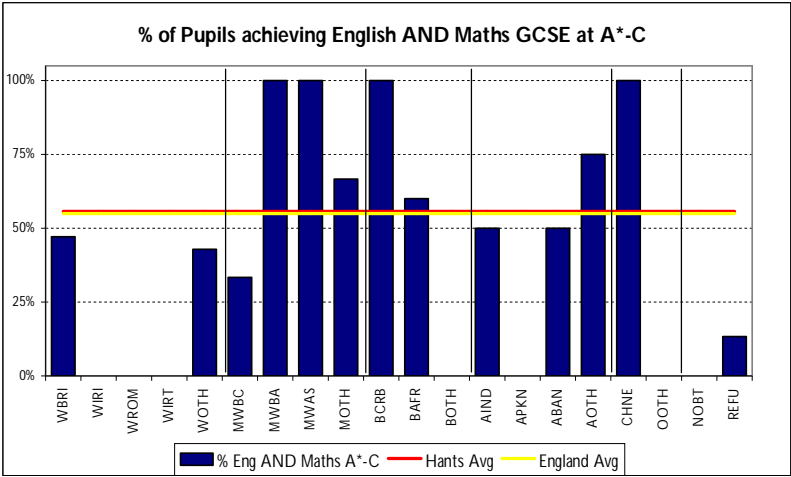
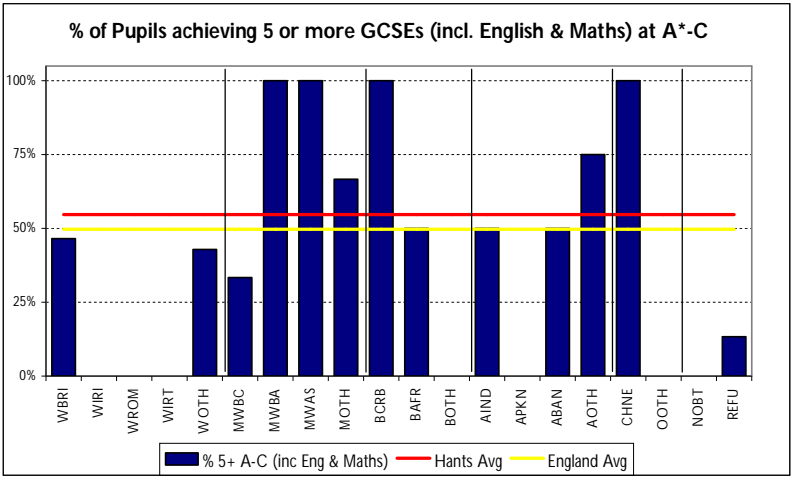
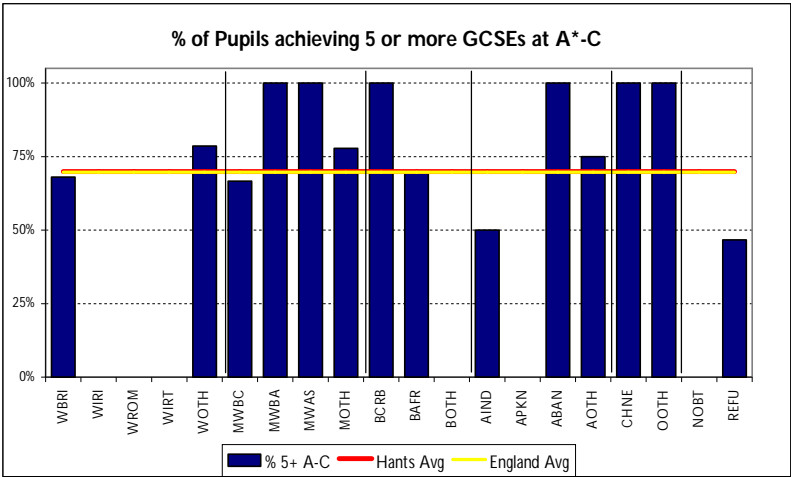


Key Stage 3 attainment charts
District-level: Havant



Key Stage 4 (GCSE) attainment charts

District-level: Havant



2009 Narrowing The Attainment Gap – county level

This chart displays the difference in percentage points between each ethnic group and White British in the percentage of pupils achieving the standard at each key-stage. The figures are averaged over a three year period (2007-2009) to smooth out fluctuations in low numbers.

	Key Stage 1			Key Stage 2			Key Stage 3			Key Stage 4	
	Reading Level	Writing Level	Maths Level	English Level	Maths Level	Science Level	English Level	Maths Level	Science Level	% 5+ A-C	% 5+ A-C (inc Eng & Maths)
	2+	2+	2+	4+	4+	4+	5+	5+	5+	% 5+ A-C	
White - Irish	6	4	5	6	8	5	1	2	3	5	7
Gypsy / Roma	-45	-36	-38	-34	-33	-18	-51	-54	-54	-53	-57
Traveller of Irish Heritage	-75	-72	-17	-21	-44	-38	-61	-64	-29	-53	-55
Any Other White Background	-5	-4	-1	-3	4	0	-1	3	1	3	3
White and Black Caribbean	1	2	3	-3	-1	-1	4	3	5	-2	-1
White and Black African	0	-4	1	-1	-2	4	11	3	-1	2	12
White and Asian	4	6	2	7	6	5	8	9	9	20	15
Any Other Mixed Background	0	0	-1	3	1	2	3	4	3	4	5
Black - Caribbean	1	-2	-2	-10	-18	-4	-14	-23	-16	-20	-19
Black - African	-4	-6	-5	-7	-15	-7	1	-3	-3	-4	-3
Any Other Black Background	2	-1	2	-11	-18	-7	-2	-21	-19	-28	-18
Indian	4	3	1	9	11	6	13	12	7	23	17
Pakistani	1	-1	-2	-13	-9	-15	2	-3	-6	19	18
Bangladeshi	-5	-1	-8	-4	-14	-2	-4	-11	-11	-6	-5
Any Other Asian Background	-4	-5	-2	-18	-10	-12	-17	-9	-18	-20	-9
Chinese	0	1	2	3	10	0	2	16	7	27	24
Any Other Ethnic Group	-6	-7	-5	-6	0	1	-14	-14	-17	-6	-3
Information Not Yet Obtained	-23	-24	-11	-4	-8	1	-17	-15	-20	-25	-25
Refused	-3	-3	-1	-2	0	0	-7	-7	-6	-11	-11

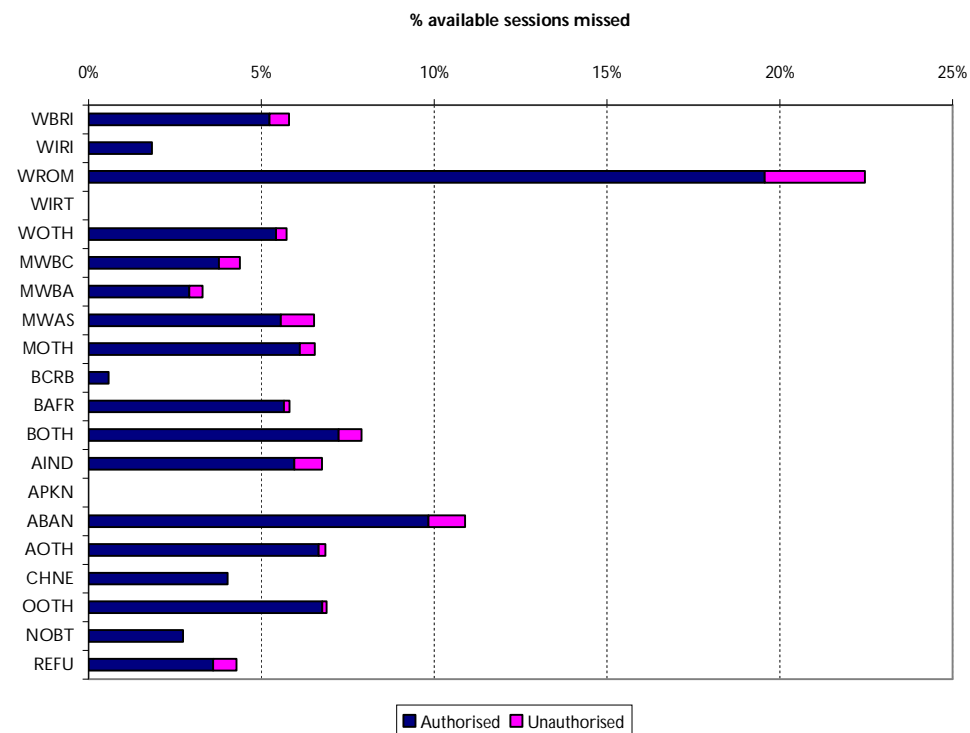
Autumn Term 2009 – Primary School District Absence Summary

Havant	No of pupils	Available sessions	Total Absence	Authorised absence	Un- authorised absence
White - British	6,646	905,797	5.8%	5.2%	0.6%
White - Irish	9	1,254	1.8%	1.8%	0.0%
Gypsy / Roma	<5	-	22.5%	19.6%	2.9%
Traveller of Irish Heritage	<5	-			
Any Other White Background	99	13,461	5.7%	5.4%	0.3%
White and Black Caribbean	19	2,626	4.4%	3.8%	0.6%
White and Black African	15	2,095	3.3%	2.9%	0.4%
White and Asian	26	3,326	6.5%	5.6%	1.0%
Any Other Mixed Background	58	8,068	6.5%	6.1%	0.4%
Black - Caribbean	<5	-	0.6%	0.6%	0.0%
Black - African	18	2,512	5.8%	5.7%	0.2%
Any Other Black Background	<5	-	7.9%	7.2%	0.7%
Indian	26	3,628	6.8%	6.0%	0.8%
Pakistani	<5	-			
Bangladeshi	16	2,084	10.9%	9.8%	1.1%
Any Other Asian Background	24	3,124	6.9%	6.7%	0.2%
Chinese	<5	-	4.0%	4.0%	0.0%
Any Other Ethnic Group	17	2,366	6.9%	6.8%	0.1%
Information Not Yet Obtained	<5	-	2.7%	2.7%	0.0%
Refused	31	4,162	4.3%	3.6%	0.7%
District total	7,024	957,031	5.8%	5.2%	0.6%

Notes

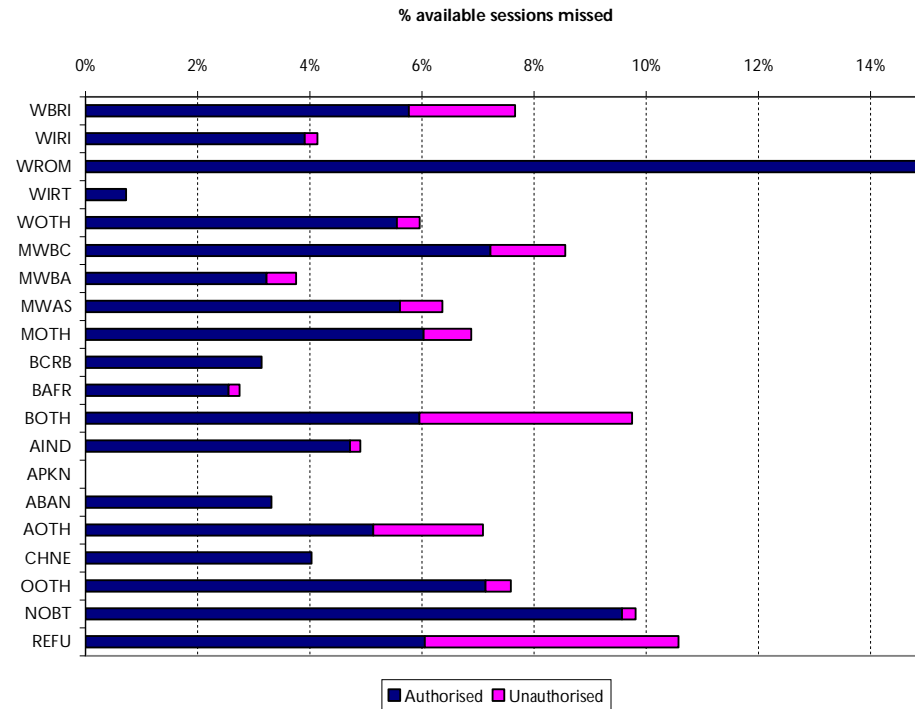
Data taken from the January 2010 school census

Includes all pupils who attended a school during the autumn term



Autumn Term 2009 – Secondary School District Absence Summary

Havant	No of pupils	Available sessions	Total Absence	Authorised absence	Un- authorised absence
White - British	6,224	849,042	7.7%	5.8%	1.9%
White - Irish	13	1,790	4.1%	3.9%	0.2%
Gypsy / Roma	<5	-	62.9%	19.3%	43.6%
Traveller of Irish Heritage	<5	-	0.7%	0.7%	0.0%
Any Other White Background	58	7,886	6.0%	5.6%	0.4%
White and Black Caribbean	13	1,800	8.6%	7.2%	1.3%
White and Black African	11	1,518	3.8%	3.2%	0.5%
White and Asian	36	4,760	6.4%	5.6%	0.8%
Any Other Mixed Background	40	5,422	6.9%	6.0%	0.8%
Black - Caribbean	<5	-	3.1%	3.1%	0.0%
Black - African	11	1,528	2.7%	2.6%	0.2%
Any Other Black Background	<5	-	9.7%	6.0%	3.8%
Indian	16	2,204	4.9%	4.7%	0.2%
Pakistani	<5	-	0.0%	0.0%	0.0%
Bangladeshi	<5	-	3.3%	3.3%	0.0%
Any Other Asian Background	29	3,936	7.1%	5.1%	2.0%
Chinese	15	2,084	4.0%	4.0%	0.0%
Any Other Ethnic Group	11	1,318	7.6%	7.1%	0.5%
Information Not Yet Obtained	<5	-	9.8%	9.6%	0.2%
Refused	76	10,392	10.6%	6.1%	4.5%
District total	6,571	896,176	7.6%	5.8%	1.9%



Notes

Data taken from the January 2010 school census

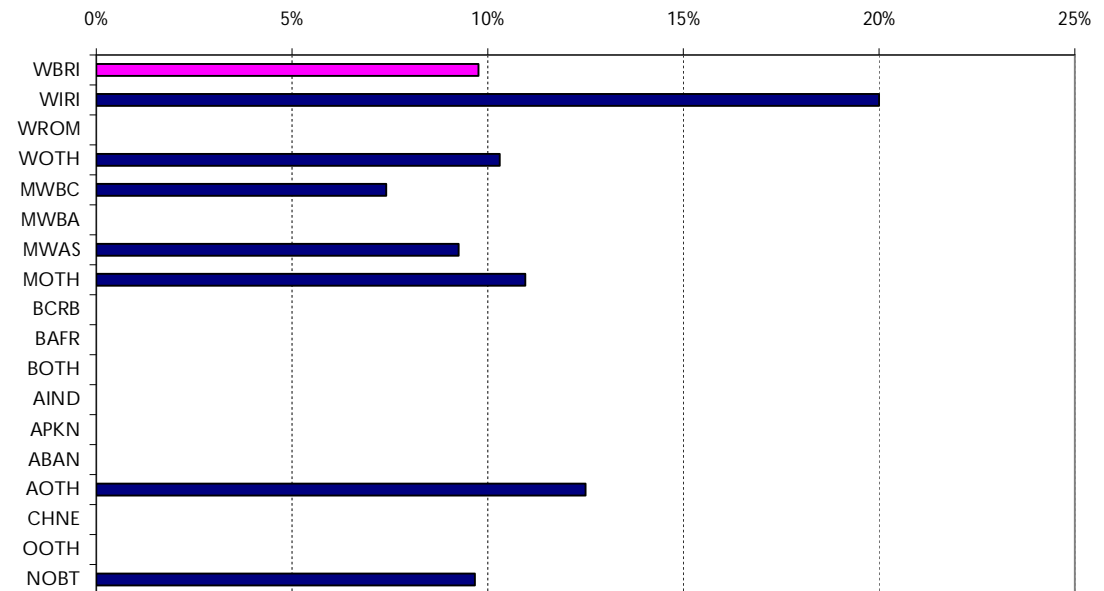
Includes all pupils who attended a school during the autumn term

Chart is scaled to show detail for most groups. As there is only one WROM pupil, the chart has not been scaled for this category.

NEET Figures By Ethnicity - March 2010

Havant	Monthly	Monthly	Monthly	% adjusted
	average	average	average	
	adjusted	adjusted	District	
	NEETs	EETs	Total	NEET
Hampshire				6.3%
England				6.7%
White - British	433.0	4,002.3	4,435.3	9.8%
White - Irish	<5	-	-	20.0%
Gypsy / Roma	<5	-	-	
Any Other White Background	<5	-	-	10.3%
White and Black Caribbean	<5	-	-	7.4%
White and Black African	<5	-	-	0.0%
White and Asian	<5	-	-	9.3%
Any Other Mixed Background	<5	-	-	11.0%
Black - Caribbean	<5	-	-	0.0%
Black - African	<5	-	-	0.0%
Any Other Black Background	<5	-	-	0.0%
Indian	<5	-	-	0.0%
Pakistani	<5	-	-	
Bangladeshi	<5	-	-	0.0%
Any Other Asian Background	<5	-	-	12.5%
Chinese	<5	-	-	0.0%
Any Other Ethnic Group	<5	-	-	0.0%
Information Not Yet Obtained	83.7	781.3	865.0	9.7%
Total	528	4,927	5,455	9.7%

% Adjusted NEET by Ethnic Group



Notes

Data source:

Hampshire and England data: DCSF January Risk Scan table

District-level and ethnic split: Hampshire CorePlus 8/3/10

Comparisons with the Hampshire figure are for illustration purposes only. They should be treated with caution due to differences in calculation methods at district and county level.

Ethnicity comparisons are with White-British

Raw NEET figures are adjusted to allow for young people whose records have expired.

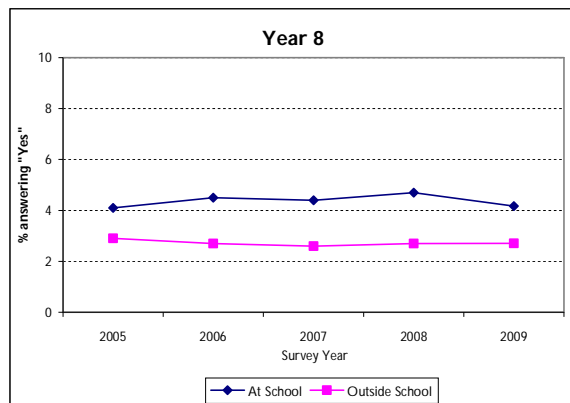
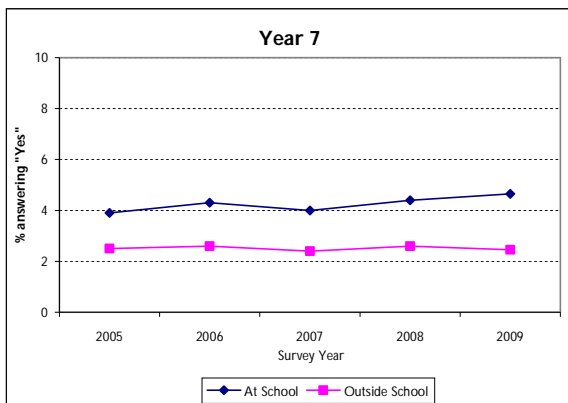
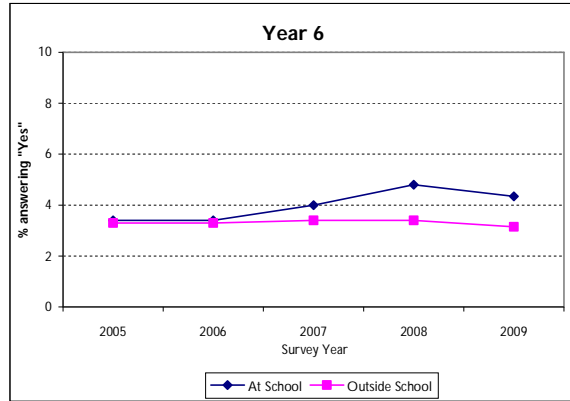
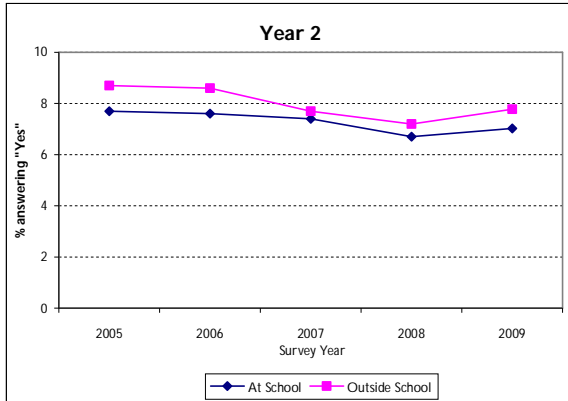
2009 Pupil Attitude Survey

Pupil Attitude Survey - bullying due to discrimination

Part A) I have been bullied **at school** on the basis of my race/religion/language*

Part B) I have been bullied **outside school** on the basis of my race/religion/language*

Hampshire-county level, trend by yeargroup



District vs Hampshire 2009

