



**Rushmoor**

**2009  
Information Booklet**

**Contents**

Summary ..... 3

2009 Ethnic Minority District Summary ..... 4

2009 Languages District Summary..... 5

District New Arrival Data (April 08 – March 09) ..... 7

08-09 ‘Year R’ District New Arrival Data - Ethnicity ..... 8

08-09 ‘Year R’ District New Arrival Data - Language..... 9

2008 Narrowing The Attainment Gap ..... 10

2008 Hampshire Foundation Stage Profile Attainment Summary..... 11

2008 Hampshire Provisional Key Stage / GCSE Attainment Summaries ..... 12

2008 District Provisional Key Stage / GCSE Attainment Summaries..... 14

Autumn Term 2008 – Primary School Absence Summary..... 16

Autumn Term 2008 – Secondary School District Absence Summary ..... 17

Hampshire NEET Figures By Ethnicity - March 2009 ..... 18

2008 Pupil Attitude Survey County Summary (Q9/14)..... 19

Current SEAL & TEAL Course Member Schools..... 23

Schools Not Buying Back Into The Service ..... 23

Further Advice ..... 23

## **Summary**

There are currently 2076 Ethnic Minority children and young people (C&YP) within the district. This represents 19.2% of the district. C&YP from this district account for 15.9% of the overall total of Ethnic Minority C&YP within Hampshire.

There are currently 67 different languages spoken by C&YP within the district and, 13.3% of the pupils have English as an additional language.

In terms of New Arrivals, 19.8% of the current 'Year R' intake are classed as an Ethnic Minority, speaking a total of 35 different languages (included in the above language figure).

## 2009 Ethnic Minority District Summary

This table gives an ethnicity breakdown of the pupils attending a Hampshire maintained school within the district.

### Ethnicity of Children in Hampshire Schools January 2009

Rushmoor Total Pupils In District = 10837

Ethnicity	Number of Children	% of County
White-British (WBRI)	8648	79.8
White-Irish (WIRI)	25	0.23
White-Any Other White (WOTH)	262	2.42
Mixed-White Asian (MWAS)	88	0.81
Mixed-White Black African (MWBA)	41	0.38
Mixed-White Black Caribbean (MWBC)	98	0.9
Mixed-Other (MOTH)	120	1.11
Asian/Asian British-Bangladeshi (ABAN)	32	0.3
Asian/Asian British-Indian (AIND)	94	0.87
Asian/Asian British-Pakistani (APKN)	88	0.81
Asian/Asian British-Other (AOTH)	910	8.4
Black/Black British-Caribbean (BCRB)	61	0.56
Black/Black British-African (BAFR)	108	1
Black/Black British-Other (BOTH)	27	0.25
Chinese (CHNE)	31	0.29
Any Other Ethnic Group (OOTH)	70	0.65
Gypsy Roma (WROM)	21	0.19
Traveller Irish Heritage (WIRT)	0	0
Not Obtained (NOBT)	6	0.06
Refused (REFU)	107	0.99
<b>Total Ethnic Minority Pupils</b>	<b>2076</b>	<b>19.16</b>
<b>% of Total Hants Ethnic Minority Children</b>		<b>15.95</b>

#### Notes:

Any ethnicity group not included in the following categories has been counted as an ethnic minority:- WBRI, REFU, NOBT

Includes pupils in all Nursery, Primary, Secondary and Special schools.

If a pupil is dually registered they will be counted once at each school attended.

This data is accurate as of the 2nd February 2009 and was taken from the January 2009 School Census. The numbers were compiled before the DCSF duplicate pupil checking exercise.

## 2009 Languages District Summary

This table details the first languages spoken by the children attending a Hampshire maintained school within the district.

### First Language of Children in Hampshire Schools January 2009

Rushmoor

Total Pupils in District = 10837

Language	Principally Where Spoken	Number of Children	% of District
Akan	Ghana	<5	0.04
Albanian/Shqip	Albania	15	0.14
Arabic	Middle East also North Africa	9	0.08
Believed to be English		37	0.34
Believed to be Other than English		9	0.08
Bengali	Bangladesh	39	0.36
Bulgarian	Bulgaria	<5	0.04
Caribbean Creole English	Caribbean	<5	0.01
Caribbean Creole French	Caribbean	<5	0.01
Chichewa/Nyanja	Malawi	<5	0.01
Chinese	China, Taiwan	27	0.25
Classification Pending		7	0.06
Czech	Czech Republic	7	0.06
Dutch/Flemish	Netherlands	<5	0.03
Ebira	Nigeria	<5	0.02
English	England	9349	86.27
Fijian	Fiji	11	0.1
Finnish	Finland	<5	0.01
French	France, Canada	11	0.1
German	Germany	11	0.1
Greek	Greece	<5	0.02
Gujarati	India	14	0.13
Hebrew	Israel	<5	0.01
Hindi	India	28	0.26
Hungarian	Hungary	6	0.06
Information not obtained		<5	0.01
Italian	Italy	6	0.06
Japanese	Japan	<5	0.02
Kazakh	Kazakhstan	<5	0.01
Konkani	India	<5	0.01
Krio	Sierra Leone	<5	0.01
Latvian	Latvia	<5	0.04
Luganda	Uganda	<5	0.01
Malayalam	India	22	0.2
Mauritian/Seychelles Creole	Mauritius	<5	0.01
Ndebele	Zimbabwe	<5	0.04
Nepali	Nepal	800	7.38
Oriya	India	<5	0.01
Other than English		10	0.09

Language	Principally Where Spoken	Number of Children	% of District
Pahari (Pakistan)	Pakistan	<5	0.03
Panjabi	India	16	0.15
Pashto/Pakhto	Afghanistan, Pakistan	13	0.12
Persian/Farsi	Iran, Afghanistan	<5	0.04
Polish	Poland	34	0.31
Portuguese	Portugal, Brazil	45	0.42
Romanian	Romania	11	0.1
Russian	Russia	8	0.07
Serbian/Croatian/Bosnian	Serbia/Croatia/Bosnia	<5	0.01
Shona	Zimbabwe	32	0.3
Sinhala	Sri Lanka	<5	0.02
Slovak	Slovakia	<5	0.04
Sotho/Sesotho	Lesotho, Botswana	<5	0.01
Spanish	Spain, Columbia, Mexico	6	0.06
Swahili	Tanzania	<5	0.02
Swazi/Siswati	Swaziland	<5	0.01
Swedish	Sweden	<5	0.02
Tagalog/Filipino	Philippines	54	0.5
Tamil	Sri Lanka	12	0.11
Telugu	India	6	0.06
Thai	Thailand	14	0.13
Turkish	Turkey	20	0.18
Ukrainian	Ukraine	<5	0.01
Urdu	Pakistan	74	0.68
Vietnamese	Vietnam	7	0.06
Welsh/Cymraeg	Wales	<5	0.02
Yoruba	Nigeria	<5	0.04
Zulu	South Africa	<5	0.03
<b>Total EAL Pupils</b>		<b>1443</b>	<b>13.32</b>
<b>% of Total Hants EAL Children</b>			<b>24.26</b>

***These total excludes the following Language groupings:***

Believed To Be English	English
British Sign Language	Information not obtained
Classification Pending	Refused

**Notes:**

These figures include all pupils in Nursery, Primary, Secondary and Special schools. If a pupil is dually registered they will be counted once at each school attended.

This data is accurate as of the 2nd February 2009 and was taken from the January 2009 School Census. The numbers were compiled before the DCSF duplicate pupil checking exercise.

# District New Arrival Data (April 08 – March 09)

This data shows the number of new referrals, by language, made to EMTAS during the period between April 2008 to March 2009.

At present, language has been chosen over ethnicity as a measure because when schools initially refer a pupil they often don't know the child's ethnicity. This process is due to change in the future and schools will be asked to try to obtain ethnicity information at the time of referral.

However, the use of language data should allow for an 'educated guess' as to a pupils ethnicity.

**District: Rushmoor**

<b>Language</b>	<b>Number of Arrivals</b>
Albanian	6
Arabic	<5
Bengali	5
Chinese	5
Czech	<5
Pashto	9
Fijian	<5
Finnish	<5
French	<5
German	<5
Hebrew	<5
Hindi	<5
Hungarian	<5
Italian	<5
Kosovan	<5
Latvian	<5
Lithuanian	<5
Luganda/English	<5
Malayalam	<5
Nepali	156
Polish	13
Portuguese	6
Panjabi	<5
Romanian	<5
Russian	<5
Shona	<5
Slovakian	<5
Spanish	<5
Tagalog	7
Tamil	<5
Telugu	<5
Thai	<5
Turkish	<5
Twi	<5
Urdu	10
Vietnamese	5
<b>Total</b>	<b>265</b>
<b>% of Hampshire Arrivals</b>	<b>33.1</b>

## 08-09 'Year R' District New Arrival Data - Ethnicity

This table gives an ethnicity breakdown of the current 'Year R' intake for the district.

### District: Rushmoor

<b>Ethnicity</b>	<b>Ethnicity Code</b>	<b>Number</b>	<b>% of District</b>
White - British	WBRI	834	79.05
White - Irish	WIRI	<5	0.28
Any Other White Background	WOTH	27	2.56
White and Asian	MWAS	16	1.52
White and Black African	MWBA	<5	0.38
White and Black Caribbean	MWBC	6	0.57
Any Other Mixed Background	MOTH	14	1.33
Bangladeshi	ABAN	<5	0.19
Indian	AIND	13	1.23
Pakistani	APKN	10	0.95
Any Other Asian Background	AOTH	79	7.49
Black - Caribbean	BCRB	<5	0.38
Black - African	BAFR	14	1.33
Any Other Black Background	BOTH	<5	0.38
Chinese	CHNE	<5	0.19
Any Other Ethnic Group	OOTH	9	0.85
Gypsy / Roma	WROM	<5	0.19
Refused	REFU	12	1.14
<b>Total New Arrivals</b>		<b>1055</b>	
<b>Total Ethnic Minority New Arrivals</b>		<b>209</b>	<b>19.81</b>

### Notes:

The 'Total Ethnic Minorities' figure excludes 'White British', 'Information Not Obtained' and, 'Refused'.

This data was taken from the January 2009 School Census and includes all 'Year R' pupils within the district as of the 15<sup>th</sup> January 2009.

Please note that this information is already included in the district summaries found earlier in this booklet. It is included purely to highlight potentially new ethnic groups or languages which may not have previously been identified.

## 08-09 'Year R' District New Arrival Data - Language

This table details the first languages spoken by the current 'Year R' intake attending a Hampshire maintained school within the district.

<b>District: Rushmoor</b>		
<b>Language</b>	<b>Number</b>	<b>% of District</b>
Akan	<5	0.09
Albanian/Shqip	<5	0.19
Arabic	<5	0.19
Believed to be English	<5	0.19
Believed to be Other than English	<5	0.09
Bengali	5	0.47
Caribbean Creole English	<5	0.09
Chinese	<5	0.19
Czech	<5	0.19
Ebira	<5	0.09
English	909	86.16
Fijian	<5	0.19
French	<5	0.19
Gujarati	<5	0.28
Hindi	5	0.47
Hungarian	<5	0.09
Italian	<5	0.09
Malayalam	<5	0.19
Nepali	59	5.59
Panjabi	<5	0.19
Pashto/Pakhto	<5	0.19
Polish	<5	0.28
Portuguese	<5	0.38
Romanian	<5	0.19
Shona	5	0.47
Slovak	<5	0.09
Spanish	<5	0.28
Tagalog/Filipino	11	1.04
Tamil	<5	0.09
Telugu	<5	0.09
Thai	<5	0.19
Turkish	<5	0.28
Urdu	7	0.66
Vietnamese	<5	0.28
Zulu	<5	0.19
<b>Total New Arrivals</b>	<b>1055</b>	
<b>Total New Arrivals With EAL</b>	<b>144</b>	<b>13.65</b>

### Notes:

The 'Total New Pupils With EAL' figure excludes 'English', 'Believed to be English', 'British Sign Language', 'Information Not Obtained' and 'Classification Pending'.

This data was taken from the January 2009 School Census and includes all 'Year R' pupils within the district as of the 15<sup>th</sup> January 2009.

## 2008 Narrowing The Attainment Gap

This chart compares the provisional 2008 results with a 3 year rolling average. Ethnic Minority groups are compared against the achievement of Hampshire's White British pupils.

% = gap to be narrowed		+x% = gap has been narrowed	
<b>Key Stage 1</b>	<b>Reading</b>	<b>Writing</b>	<b>Maths</b>
	APKN 6%	WROM 26% MWBC +7%	MWBC +7%
<b>Key Stage 2</b>	<b>English</b>	<b>Maths</b>	<b>Science</b>
	BAFR 10% AOTH 9% BOTH 12% OOTH 12% APKN 0% MWBC 5%	BAFR 17% AOTH 8% BOTH 10% ABAN 11% WROM 32% APKN +10% MWBC 2%	BAFR 6% AOTH 12% CHIN +1% WROM 25%
<b>Key Stage 3</b>	WOTH 1% BAFR 2% AIND +14% APKN +10.5% AOTH + 11%	WOTH 1% MWAS +3% MOTH +14% AIND +14% ABAN 7%	WOTH +6% MWAS +9% BOTH 27% AIND +17% ABAN 7% AOTH 19%
<b>Key Stage 4</b>	<b>5+A*-C</b>	<b>5+*A-C incl En and Ma</b>	<b>5+A*-G</b>
	WIRT 30% WOTH +10% WROM 55% MWBC 13% MWBA+23% MWAS +19% MOTH +8% BCRB 3% BAFR 31% BOTH +4% AIND +23% APKN +20% ABAN 11% AOTH +11% CHIN +20% OOTH +4%	WIRT 33% WOTH +8% WROM 50+% MWBA 26% MWBC 18% MWAS +17% MOTH 18% BCRB 18% BAFR 26% BOTH 16% AIND +18% APKN +18% ABAN 6% AOTH 3% CHIN +14% OOTH 1%	WIRT 33% WOTH +2% WROM 36% MWBC 2% MWBA +1% MOTH +4% BAFR 12% BOTH 8% AIND +3% AOTH +5% CHIN +3% OOTH +1%

AOTH – Any other Asian background	MOTH – Any other Mixed background
ABAN – Bangladeshi	MWAS – White/Asian
AIND – Indian	MWBC – White/Black Caribbean
APKN – Pakistani	NOBT – Info not obtained
BCRB – Black Caribbean	OOTH – Any other Ethnic Group
BAFR – African	REFU – Refused
BOTH – Any other Black background	WOTH – Any other White background
CHIN – Chinese	WBRI – British
MWBA – White/Black African	WIRI – Irish
MOTH – Any other Mixed background	WROM – Gypsy/Roma
MWAS – White/Asian	

# 2008 Hampshire Foundation Stage Profile Attainment Summary

## Ethnic Minority FSP 2008 Summary - Groups Scoring 7+ or Below 6

7+	Personal, Social, Emotional Development			Communication, Language & Literacy				Mathematical Development			Knowledge & Understanding of the World	Physical Development	Creative Development
	Disposition & Attitudes	Social Development	Emotional Development	Language for Communication & Thinking	Linking Sounds & Letters	Reading	Writing	Numbers as Labels & for Counting	Calculating	Space, Shape & Measures			
BCRB				✓									
MWAS					✓								

<6	Personal, Social, Emotional Development			Communication, Language & Literacy				Mathematical Development			Knowledge & Understanding of the World	Physical Development	Creative Development
	Disposition & Attitudes	Social Development	Emotional Development	Language for Communication & Thinking	Linking Sounds & Letters	Reading	Writing	Numbers as Labels & for Counting	Calculating	Space, Shape & Measures			
WOTH							✓						
MWBA							✓						
MWBC							✓						
ABAN			✓	✓	✓	✓	✓		✓		✓		
AOTH			✓	✓	✓	✓	✓		✓	✓	✓		
APKN						✓	✓		✓			✓	
BCRB							✓						
BAFR							✓		✓				
BOTH			✓	✓	✓	✓	✓		✓	✓		✓	
CHIN			✓	✓	✓	✓	✓		✓				
OOTH			✓	✓	✓	✓	✓		✓	✓			
WROM	✓	✓	✓	✓	✓	✓	✓	✓	✓	✓	✓	✓	
WIRT	✓	✓	✓	✓	✓	✓	✓	✓	✓	✓	✓	✓	

## 2008 Hampshire Provisional Key Stage / GCSE Attainment Summaries

Key Stage 1 (Provisional)	Num of Pupils	Reading %2+	Writing %2+	Maths %2+	Science %2+
England		84	80	90	89
Hampshire		87	84	92	93
White - British	11980	87.3	84.5	92.3	93.6
White - Irish	24	87.5	75.0	95.8	95.8
Traveller Irish Heritage	<5	0.0	0.0	100.0	100.0
White - any other White	310	83.9	81.3	90.7	89.4
Gypsy/Roma	19	47.4	57.9	57.9	73.7
Mixed - White Black Carib	64	92.2	92.2	98.4	95.3
Mixed - White Black Afric	26	84.6	76.9	88.5	88.5
Mixed - White Asian	95	91.6	90.5	93.7	92.6
Mixed - Other	143	87.4	83.9	92.3	93.7
Black/Black British - Car	14	85.7	85.7	92.9	92.9
Black/Black British - Afr	41	92.7	80.5	90.2	87.8
Black/Black British - Oth	11	81.8	72.7	90.9	81.8
Asian/Asian British - Ind	79	87.3	83.5	89.9	87.3
Asian/Asian British - Pak	21	81.0	85.7	85.7	85.7
Asian/Asian British - Ban	28	82.1	78.6	82.1	82.1
Asian/Asian British - Oth	123	84.6	78.9	90.2	88.6
Chinese	38	79.0	76.3	89.5	84.2
Any Other Ethnic Group	55	80.0	78.2	83.6	83.6
Information Not Obtained	41	70.7	70.7	78.1	70.7
Parent/Pupil Refused	129	81.4	79.1	89.2	93.0

Key Stage 2 (Provisional)	Num of Pupils	English %4+	Maths %4+	Science %4+
England		81	78	88
Hampshire		82	79	90
White - British	13046	83.3	80.0	90.4
White - Irish	25	80.0	76.0	92.0
Traveller Irish Heritage	<5	33.3	33.3	33.3
White - any other White	254	77.6	83.5	89.8
Gypsy/Roma	23	43.5	52.2	65.2
Mixed - White Black Carib	58	87.9	87.9	93.1
Mixed - White Black Afric	32	78.1	62.5	87.5
Mixed - White Asian	87	87.4	81.6	92.0
Mixed - Other	121	86.8	78.5	91.7
Black/Black British - Car	15	86.7	66.7	93.3
Black/Black British - Afr	44	81.8	61.4	84.1
Black/Black British - Oth	10	70.0	70.0	90.0
Asian/Asian British - Ind	71	94.4	88.7	95.8
Asian/Asian British - Pak	17	82.4	88.2	88.2
Asian/Asian British - Ban	27	70.4	59.3	81.5
Asian/Asian British - Oth	137	70.8	73.0	78.1
Chinese	34	94.1	85.3	94.1
Any Other Ethnic Group	39	84.6	84.6	92.3
Information Not Obtained	23	78.3	73.9	82.6
Parent/Pupil Refused	248	80.2	79.0	89.9

### Notes

England and Hampshire data as published by DCSF:-

DCSF: National Curriculum Assessments at Key Stage 1 in England, 2008 (Provisional)(28/08/08)

DCSF: National Curriculum Assessments at Key Stage 2 in England, 2008 (Provisional)(05/08/08)

Ethnicity breakdowns created from Hampshire held results data

KS1 as at 20/02/09 as reported by Keypas

KS2 as at 20/02/09 (Feb Datafeed)

<b>Key Stage 3 (Provisional)</b>	<b>Num of Pupils</b>	<b>English %5+</b>	<b>Maths %5+</b>	<b>Science %5+</b>
<b>England Hampshire</b>				
White - British		Accurate data not available at time of publication		
White - Irish				
Traveller Irish Heritage				
White - any other White				
Gypsy/Roma				
Mixed - White Black Carib				
Mixed - White Black Afric				
Mixed - White Asian				
Mixed - Other				
Black/Black British - Car				
Black/Black British - Afr				
Black/Black British - Oth				
Asian/Asian British - Ind				
Asian/Asian British - Pak				
Asian/Asian British - Ban				
Asian/Asian British - Oth				
Chinese				
Any Other Ethnic Group				
Information Not Obtained				
Parent/Pupil Refused				

<b>Key Stage 4 (Provisional)</b>	<b>Num of Pupils</b>	<b>5+ A-C</b>	<b>5+ A-C Inc Eng and Mat</b>
<b>England Hampshire</b>		64.6 66.8	47.2 53.4
White - British	13161	68.1	54.6
White - Irish	17	82.4	47.1
Traveller Irish Heritage	<5	0.0	0.0
White - any other White	212	71.2	60.4
Gypsy/Roma	12	25.0	0.0
Mixed - White Black Carib	45	66.7	53.3
Mixed - White Black Afric	18	72.2	50.0
Mixed - White Asian	58	77.6	70.7
Mixed - Other	67	71.6	53.7
Black/Black British - Car	13	61.5	30.8
Black/Black British - Afr	50	72.0	56.0
Black/Black British - Oth	9	44.4	11.1
Asian/Asian British - Ind	53	83.0	75.5
Asian/Asian British - Pak	17	76.5	52.9
Asian/Asian British - Ban	24	66.7	54.2
Asian/Asian British - Oth	125	64.0	39.2
Chinese	36	91.7	83.3
Any Other Ethnic Group	26	76.9	57.7
Information Not Obtained	53	34.0	28.3
Parent/Pupil Refused	134	59.0	39.6

**Notes**

England and Hampshire data as published by DCSF:-

DCSF: GCSE and Equivalent Results in England, 2007/08 (Provisional)(16/10/08)

Ethnicity breakdowns created from Hampshire held results data

KS4 as at 05/12/08 as held in Epas

## 2008 District Provisional Key Stage / GCSE Attainment Summaries

Key Stage 1 (Provisional)	Num of Pupils	Reading %2+	Writing %2+	Maths %2+	Science %2+
England		84	80	90	89
Hampshire		87	84	92	93
White - British	778	86.0	83.0	91.7	93.8
White - Irish	5	80.0	80.0	80.0	80.0
Traveller Irish Heritage	0	N/A	N/A	N/A	N/A
White - any other White	21	76.2	66.7	90.5	81.0
Gypsy/Roma	<5	0.0	50.0	50.0	100.0
Mixed - White Black Carib	8	87.5	100.0	100.0	100.0
Mixed - White Black Afric	<5	50.0	50.0	100.0	100.0
Mixed - White Asian	8	87.5	75.0	87.5	87.5
Mixed - Other	15	86.7	80.0	93.3	93.3
Black/Black British - Car	7	85.7	71.4	85.7	85.7
Black/Black British - Afr	13	84.6	69.2	84.6	84.6
Black/Black British - Oth	<5	50.0	100.0	100.0	50.0
Asian/Asian British - Ind	5	60.0	60.0	80.0	100.0
Asian/Asian British - Pak	11	81.8	90.9	81.8	81.8
Asian/Asian British - Ban	<5	100.0	50.0	100.0	100.0
Asian/Asian British - Oth	68	86.8	76.5	92.7	86.8
Chinese	<5	75.0	75.0	75.0	75.0
Any Other Ethnic Group	<5	75.0	50.0	75.0	75.0
Information Not Obtained	7	57.1	57.1	85.7	71.4
Parent/Pupil Refused	8	75.0	87.5	100.0	100.0

Key Stage 2 (Provisional)	Num of Pupils	English %4+	Maths %4+	Science %4+
England		81	78	88
Hampshire		82	79	90
White - British	776	82.6	77.6	90.2
White - Irish	<5	75.0	50.0	75.0
Traveller Irish Heritage	0	N/A	N/A	N/A
White - any other White	25	80.0	76.0	76.0
Gypsy/Roma	<5	0.0	0.0	0.0
Mixed - White Black Carib	12	75.0	83.3	91.7
Mixed - White Black Afric	<5	100.0	100.0	100.0
Mixed - White Asian	8	75.0	100.0	87.5
Mixed - Other	11	90.9	90.9	100.0
Black/Black British - Car	<5	100.0	66.7	100.0
Black/Black British - Afr	10	100.0	70.0	100.0
Black/Black British - Oth	<5	100.0	100.0	100.0
Asian/Asian British - Ind	12	100.0	83.3	100.0
Asian/Asian British - Pak	10	70.0	80.0	80.0
Asian/Asian British - Ban	<5	66.7	66.7	66.7
Asian/Asian British - Oth	74	75.7	77.0	79.7
Chinese	<5	100.0	100.0	100.0
Any Other Ethnic Group	7	100.0	85.7	85.7
Information Not Obtained	<5	100.0	100.0	0.0
Parent/Pupil Refused	13	92.3	92.3	92.3

### Notes

England and Hampshire data as published by DCSF:-

DCSF: National Curriculum Assessments at Key Stage 1 in England, 2008 (Provisional)(28/08/08)

DCSF: National Curriculum Assessments at Key Stage 2 in England, 2008 (Provisional)(05/08/08)

Ethnicity breakdowns created from Hampshire held results data

KS1 as at 20/02/09 as reported by Keyphas      KS2 as at 20/02/09 (Feb Datafeed)

<b>Key Stage 3 (Provisional)</b>	<b>Num of Pupils</b>	<b>English %5+</b>	<b>Maths %5+</b>	<b>Science %5+</b>
<b>England Hampshire</b>				
White - British		Accurate data not available at time of publication		
White - Irish				
Traveller Irish Heritage				
White - any other White				
Gypsy/Roma				
Mixed - White Black Carib				
Mixed - White Black Afric				
Mixed - White Asian				
Mixed - Other				
Black/Black British - Car				
Black/Black British - Afr				
Black/Black British - Oth				
Asian/Asian British - Ind				
Asian/Asian British - Pak				
Asian/Asian British - Ban				
Asian/Asian British - Oth				
Chinese				
Any Other Ethnic Group				
Information Not Obtained				
Parent/Pupil Refused				

<b>Key Stage 4 (Provisional)</b>	<b>Num of Pupils</b>	<b>5+ A-C</b>	<b>5+ A-C Inc Eng and Mat</b>
<b>England Hampshire</b>		64.6 66.8	47.2 53.4
White - British	654	61.3	43.0
White - Irish	<5	100.0	0.0
Traveller Irish Heritage	0	N/A	N/A
White - any other White	16	62.5	37.5
Gypsy/Roma	<5	0.0	0.0
Mixed - White Black Carib	<5	100.0	100.0
Mixed - White Black Afric	<5	100.0	0.0
Mixed - White Asian	8	37.5	37.5
Mixed - Other	<5	25.0	25.0
Black/Black British - Car	6	66.7	16.7
Black/Black British - Afr	9	55.6	55.6
Black/Black British - Oth	0	N/A	N/A
Asian/Asian British - Ind	<5	100.0	75.0
Asian/Asian British - Pak	6	66.7	16.7
Asian/Asian British - Ban	<5	50.0	50.0
Asian/Asian British - Oth	75	57.3	25.3
Chinese	<5	100.0	100.0
Any Other Ethnic Group	<5	66.7	66.7
Information Not Obtained	0	N/A	N/A
Parent/Pupil Refused	11	45.5	27.3

**Notes**

England and Hampshire data as published by DCSF:-

DCSF: GCSE and Equivalent Results in England, 2007/08 (Provisional)(16/10/08)

Ethnicity breakdowns created from Hampshire held results data

KS4 as at 05/12/08 as held in Epas

## Autumn Term 2008 – Primary School Absence Summary

Ethnicity	Total	%	Total	%	Total	% Total	
	Total Sessions	Authorised Sessions Missed	Authorised Sessions Missed	Unauthorised Sessions Missed	Unauthorised Sessions Missed	Total Sessions Absence	% Total Sessions Absence
White - British	650784	32266	4.96	2368	0.36	34634	5.32
White - Irish	2302	140	6.08	0	0	140	6.08
Any Other White Background	21059	1089	5.17	158	0.75	1247	5.92
White and Asian	8052	400	4.97	26	0.32	426	5.29
White and Black African	3864	177	4.58	14	0.36	191	4.94
White and Black Caribbean	7996	443	5.54	18	0.23	461	5.77
Any Other Mixed Background	9802	447	4.56	23	0.23	470	4.79
Bangladeshi	2892	273	9.44	12	0.41	285	9.85
Indian	9078	565	6.22	46	0.51	611	6.73
Any Other Asian Background	54646	2682	4.91	127	0.23	2809	5.14
Pakistani	7652	679	8.87	77	1.01	756	9.88
Black Caribbean	5604	186	3.32	8	0.14	194	3.46
Black - African	8406	262	3.12	18	0.21	280	3.33
Any Other Black Background	2252	202	8.97	26	1.15	228	10.12
Chinese	2270	68	3	5	0.22	73	3.22
Any Other Ethnic Group	5982	367	6.14	27	0.45	394	6.59
Gypsy / Roma	986	83	8.42	16	1.62	99	10.04
Information Not Yet Obtained	920	89	9.67	74	8.04	163	17.72
Refused	6074	312	5.14	28	0.46	340	5.6
<b>Total</b>	<b>810621</b>	<b>40730</b>	<b>5.0</b>	<b>3071</b>	<b>0.4</b>	<b>43801</b>	<b>5.4</b>

### Notes:

Data taken from January 2009 School Census

Includes all pupils in attendance a school during the Autumn Term

## Autumn Term 2008 – Secondary School District Absence Summary

Ethnicity	Total	Total	%	Total	%	Total	% Total
	Total Sessions	Authorised Sessions Missed	Authorised Sessions Missed	Unauthorised Sessions Missed	Unauthorised Sessions Missed	Total Sessions Absence	% Total Sessions Absence
White - British	418990	28837	6.88	6486	1.55	35323	8.43
White - Irish	848	76	8.96	0	0	76	8.96
Any Other White Background	10378	645	6.22	106	1.02	751	7.24
White and Asian	1606	67	4.17	4	0.25	71	4.42
White and Black African	1274	76	5.97	4	0.31	80	6.28
White and Black Caribbean	4680	323	6.9	58	1.24	381	8.14
Any Other Mixed Background	5152	385	7.47	37	0.72	422	8.19
Bangladeshi	1138	126	11.07	4	0.35	130	11.42
Indian	2126	145	6.82	0	0	145	6.82
Pakistani	2966	214	7.22	3	0.1	217	7.32
Any Other Asian Background	57482	2150	3.74	279	0.49	2429	4.23
Black - Caribbean	2222	63	2.84	11	0.5	74	3.33
Black - African	4510	162	3.59	5	0.11	167	3.7
Any Other Black Background	708	23	3.25	0	0	23	3.25
Chinese	1552	29	1.87	0	0	29	1.87
Any Other Ethnic Group	1984	117	5.9	8	0.4	125	6.3
Gypsy / Roma	994	184	18.51	136	13.68	320	32.19
Information Not Yet Obtained	1380	155	11.23	234	16.96	389	28.19
Refused	7152	484	6.77	173	2.42	657	9.19
<b>Total</b>	<b>527142</b>	<b>34261</b>	<b>6.5</b>	<b>7548</b>	<b>1.4</b>	<b>41809</b>	<b>7.9</b>

### Notes:

Data taken from January 2009 School Census

Includes all pupils who attended a school during the Autumn Term

## Hampshire NEET Figures By Ethnicity - March 2009

	Cohort Total	% EET	% NEET	% Other	% Current Situation Unknown
White British	46974	64.7	4.3	0.1	31.0
White Irish	146	74.0	4.8	0.7	20.5
White Gypsy/Roma	<5	0.0	100.0	0.0	0.0
Any Other White Background	1038	54.1	2.2	0.1	43.5
White And Black Caribbean	165	70.3	7.9	0.6	21.2
White And Black African	84	73.8	4.8	0.0	21.4
White And Asian	179	87.2	2.8	0.0	10.1
Any Other Mixed Background	218	75.7	5.0	0.0	19.3
Indian	244	81.6	3.3	0.0	15.2
Pakistani	63	82.5	0.0	0.0	17.5
Bangladeshi	163	79.8	1.8	0.0	18.4
Any Other Asian Background	300	84.0	2.0	0.0	14.0
Caribbean	59	66.1	1.7	0.0	32.2
African	149	71.1	2.7	0.0	26.2
Any Other Black Background	59	50.8	5.1	0.0	44.1
Chinese	206	78.6	1.0	0.0	20.4
Any Other Ethnic Group	138	56.5	2.9	0.0	40.6
Refused	0	0.0	0.0	0.0	0.0
Information Not Obtained	9673	71.7	3.9	0.0	24.4
<b>Total</b>	<b>59859</b>	<b>66.1</b>	<b>4.2</b>	<b>0.1</b>	<b>29.7</b>

### Notes:

These figures are based on the number of young people who are either EET at an establishment in the area (but don't necessarily live in the area) or who are NEET and resident in the area. It is this method of calculation that is used to report NEET data to the DCSF.

# 2008 Pupil Attitude Survey County Summary (Q9/14)

## Year 2 - 2005 - 2008 Trends

### Question 09a

Since I have been in Year 2, someone has been unkind to me in school or in the playground because of the colour of my skin, or my religion, or because the language I speak at home is not English

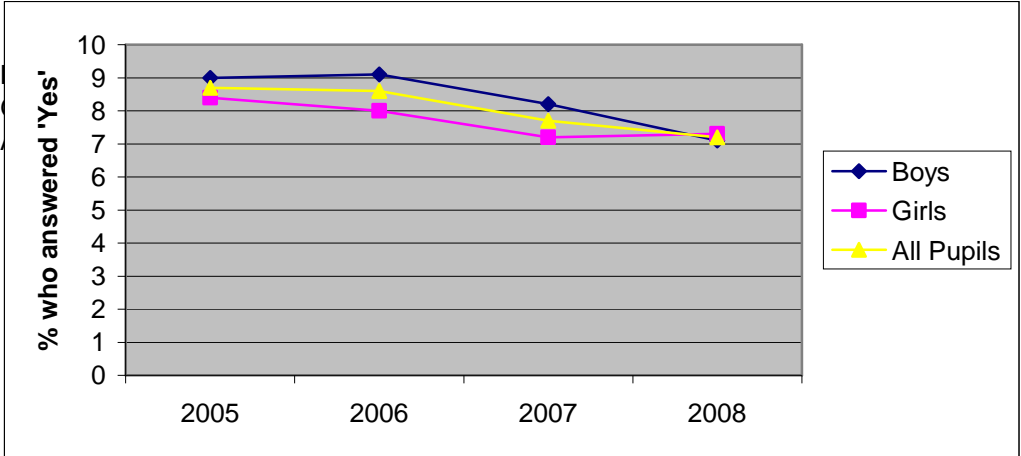
%	2005		2006		2007		2008	
	Yes	No	Yes	No	Yes	No	Yes	No
<b>Boys</b>	8.1	91.9	8.2	91.8	8.1	91.9	6.9	93.1
<b>Girls</b>	7.3	92.7	7	93	6.6	93.4	6.5	93.5
<b>All Pupils</b>	7.7	92.3	7.6	92.4	7.4	92.6	6.7	93.3



### Question 09b

Since I have been in Year 2, someone has been unkind to me outside of school because of the colour of my skin, or my religion, or because the language I speak at home is not English

%	2005		2006		2007		2008	
	Yes	No	Yes	No	Yes	No	Yes	No
<b>Boys</b>	9	91	9.1	90.9	8.2	91.8	7.1	92.9
<b>Girls</b>	8.4	91.6	8	92	7.2	92.8	7.3	92.7
<b>All Pupils</b>	8.7	91.3	8.6	91.4	7.7	92.3	7.2	92.8

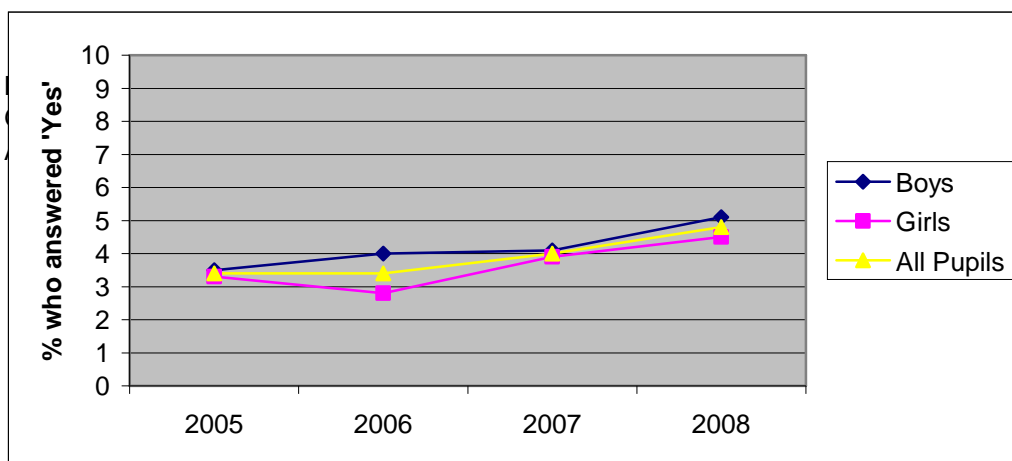


## Year 6 - 2005 - 2008 Trends

### Question 14a

In the last year I have been picked on in school because of my skin colour, religion or the language I speak at home is not English

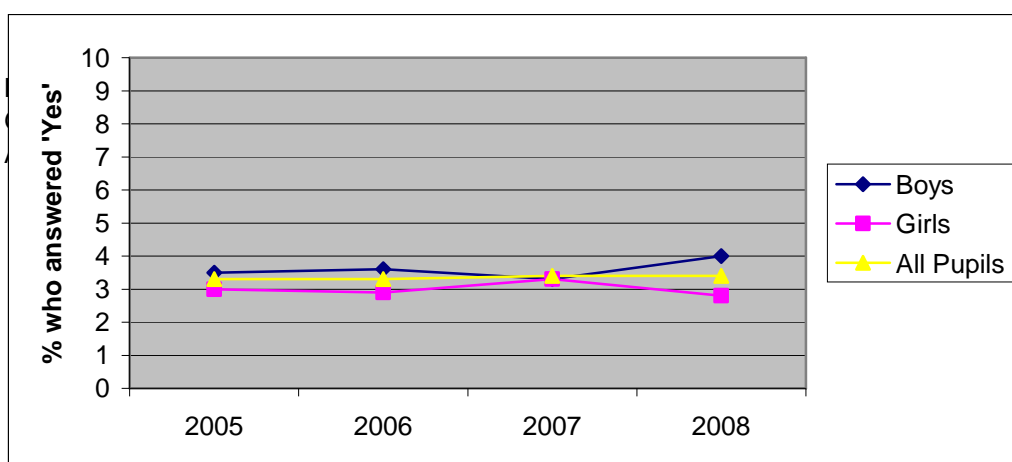
%	2005		2006		2007		2008	
	Yes	No	Yes	No	Yes	No	Yes	No
Boys	3.5	96.5	4	96	4.1	95.9	5.1	94.9
Girls	3.3	96.7	2.8	97.2	3.9	96.1	4.5	95.5
All Pupils	3.4	96.6	3.4	96.6	4	96	4.8	95.2



### Question 14b

In the last year I have been picked on outside of school because of my skin colour, religion or the language I speak at home is not English

%	2005		2006		2007		2008	
	Yes	No	Yes	No	Yes	No	Yes	No
Boys	3.5	96.5	3.6	96.4	3.3	96.7	4	96
Girls	3	97	2.9	97.1	3.3	96.7	2.8	97.2
All Pupils	3.3	96.7	3.3	96.7	3.4	96.6	3.4	96.6

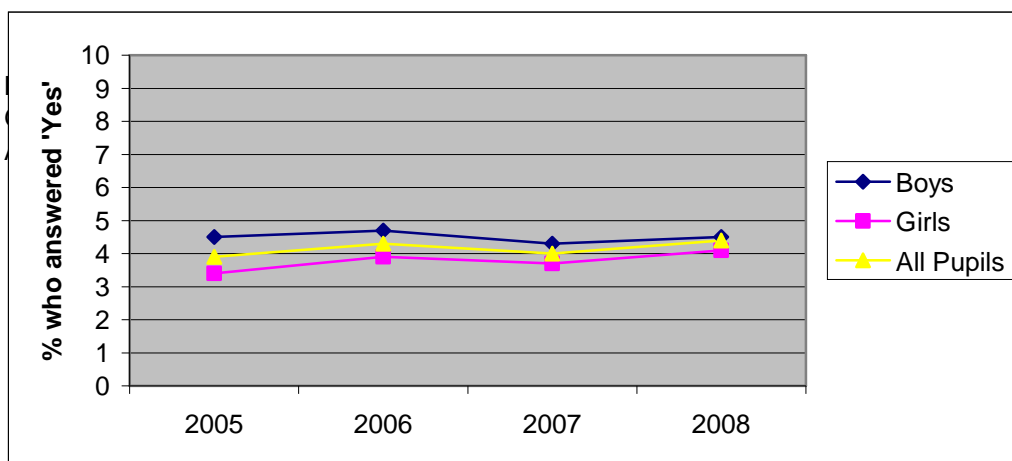


## Year 7 - 2005 - 2008 Trends

### Question 14a

In the last year I have been picked on in school because of my skin colour, religion or the language I speak at home is not English

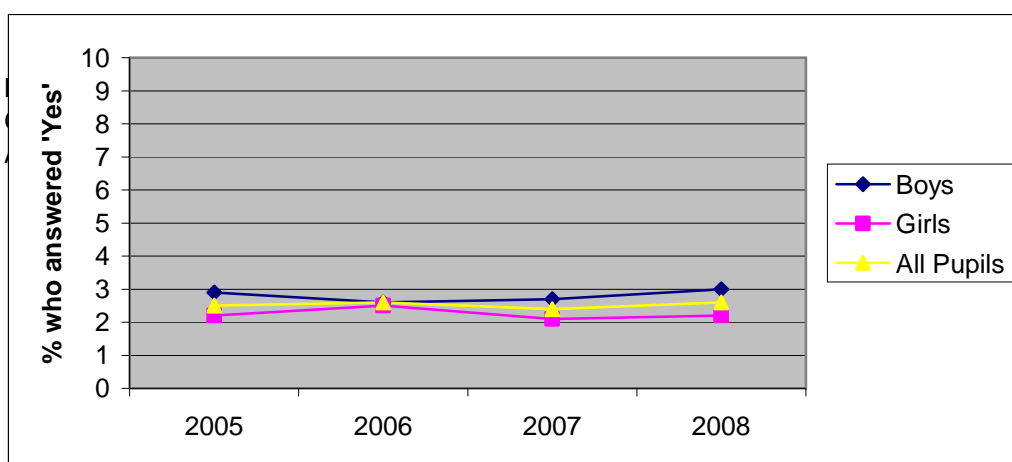
%	2005		2006		2007		2008	
	Yes	No	Yes	No	Yes	No	Yes	No
Boys	4.5	95.5	4.7	95.3	4.3	95.7	4.5	95.5
Girls	3.4	96.6	3.9	96.1	3.7	96.3	4.1	95.9
All Pupils	3.9	96.1	4.3	95.7	4	96	4.4	95.6



### Question 14b

In the last year I have been picked on outside of school because of my skin colour, religion or the language I speak at home is not English

%	2005		2006		2007		2008	
	Yes	No	Yes	No	Yes	No	Yes	No
Boys	2.9	97.1	2.6	97.4	2.7	97.3	3	97
Girls	2.2	97.8	2.5	97.5	2.1	97.9	2.2	97.8
All Pupils	2.5	97.5	2.6	97.4	2.4	97.6	2.6	97.4

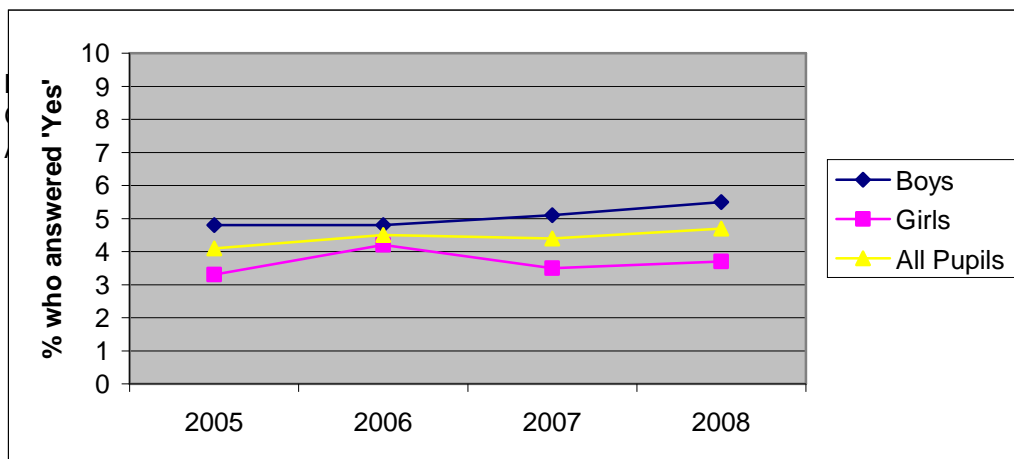


## Year 9 - 2005 - 2008 Trends

### Question 14a

In the last year I have been picked on in school because of my skin colour, religion or the language I speak at home is not English

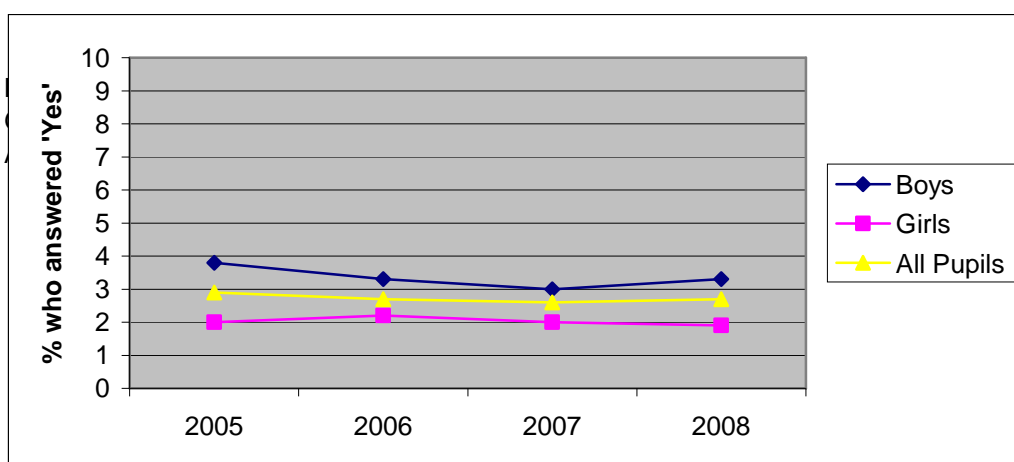
%	2005		2006		2007		2008	
	Yes	No	Yes	No	Yes	No	Yes	No
Boys	4.8	95.2	4.8	95.2	5.1	94.9	5.5	94.5
Girls	3.3	96.7	4.2	95.8	3.5	96.5	3.7	96.3
All Pupils	4.1	95.9	4.5	95.5	4.4	95.6	4.7	95.3



### Question 14b

In the last year I have been picked on outside of school because of my skin colour, religion or the language I speak at home is not English

%	2005		2006		2007		2008	
	Yes	No	Yes	No	Yes	No	Yes	No
Boys	3.8	96.2	3.3	96.7	3	97	3.3	96.7
Girls	2	98	2.2	97.8	2	98	1.9	98.1
All Pupils	2.9	97.1	2.7	97.3	2.6	97.4	2.7	97.3



## Current SEAL & TEAL Course Member Schools

These tables list the Current Support for English as an Additional Language (SEAL) & Teaching English as an Additional Language (TEAL) course member schools. This list is accurate as of time of writing.

<b>TEAL Schools</b>	<b>DCSF District</b>	<b>Tel</b>
Kings Furlong Junior School	2726 Basingstoke & Deane	01256 325324
St Michael's Church Of England (Controlled) Infant School	3185 Rushmoor	01252 324300
Talavera Infant School	2526 Rushmoor	01252 323137
Talavera Junior School	2523 Rushmoor	01252 322156
Winton School	4184 Test Valley	01264 351822

<b>SEAL (Year 1)</b>	<b>DCSF District</b>	<b>Tel</b>
Balksbury Infant School	2354 Test Valley	01264 352801
Beaumont Junior School	2532 Rushmoor	01252 326573
Bishop Challoner Catholic Voluntary Aided Secondary School	4604 Basingstoke & Deane	01256 462661
Fleet Infant School	2270 Hart	01252 613582
Henry Beaufort School	4174 Winchester	01962 880073
Hook Junior School	2325 Hart	01256 762468
Parsonage Farm Nursery And Infant School	2530 Rushmoor	01252 548003
Romsey Primary School	3668 Test Valley	01794 512362
The Wavell School	4206 Rushmoor	01252 341256

<b>SEAL (Year 2)</b>	<b>DCSF District</b>	<b>Tel</b>
Farnborough Grange Nursery/Infant School & Early Years Centre	2522 Rushmoor	01252 541879
Manor Infant School	2524 Rushmoor	01252 543348
Talavera Junior School	2523 Rushmoor	01252 322156

## Schools Not Buying Back Into The Service

These are the schools within the district that are not currently buying back into the service in 2009-2012.

St Joseph's Catholic Primary School (5204)

## Further Advice

Please contact [liz.statham@hants.gov.uk](mailto:liz.statham@hants.gov.uk) for

**School Self Evaluation Discussions**

**Data Discussions**

**Training for Locality Teams**

**Training for Council Officers**