



2009/10
Data information booklet for

Winchester

(external audience version)

Hampshire Ethnic Minority and
Traveller Achievement Service

Equality, Excellence, Diversity

*Compiled for EMTAS by Hampshire Data
and Information Team (DaIT) 2010*



For further information please visit www.hants.gov.uk/education/ema

Contents

- Summary 3
- Ethnic Minority Summary Charts..... 4
- Ethnic Minority Summary 7
- Languages Summary 8
- New Referrals..... 10
- New Year-R Pupils 11
- 2009 Foundation Stage Profile Attainment – Table..... 12
- 2009 Foundation Stage Profile Attainment - Charts..... 13
- 2009 Key Stage / GCSE Attainment - table 14
- 2009 Key Stage / GCSE Attainment - charts..... 15
- 2009 Narrowing The Attainment Gap – county level..... 19
- Autumn Term 2009 – Primary School District Absence Summary 20
- Autumn Term 2009 – Secondary School District Absence Summary..... 21
- NEET Figures By Ethnicity - March 2010..... 22
- 2009 Pupil Attitude Survey..... 23

Note:

This version of the booklet has been produced for audiences external to Hampshire County Council.

The difference between internal and external versions is where small numbers are concerned. To prevent the identification of individuals, wherever a cohort contains 5 or fewer pupils the cohort size is shown simply as <5, and the corresponding percentage of total is blanked out. In instances where there is only one ethnic group with fewer than 5 people, the exact number in the next smallest group is also hidden. Wherever showing cohort size as <5 is not sufficient to protect identities, small cohort sizes show as <10.

Summary

There are currently 1,115 ethnic minority children and young people (C&YP) at schools within Winchester, which represents 8.3% of the district (7.7% last year).

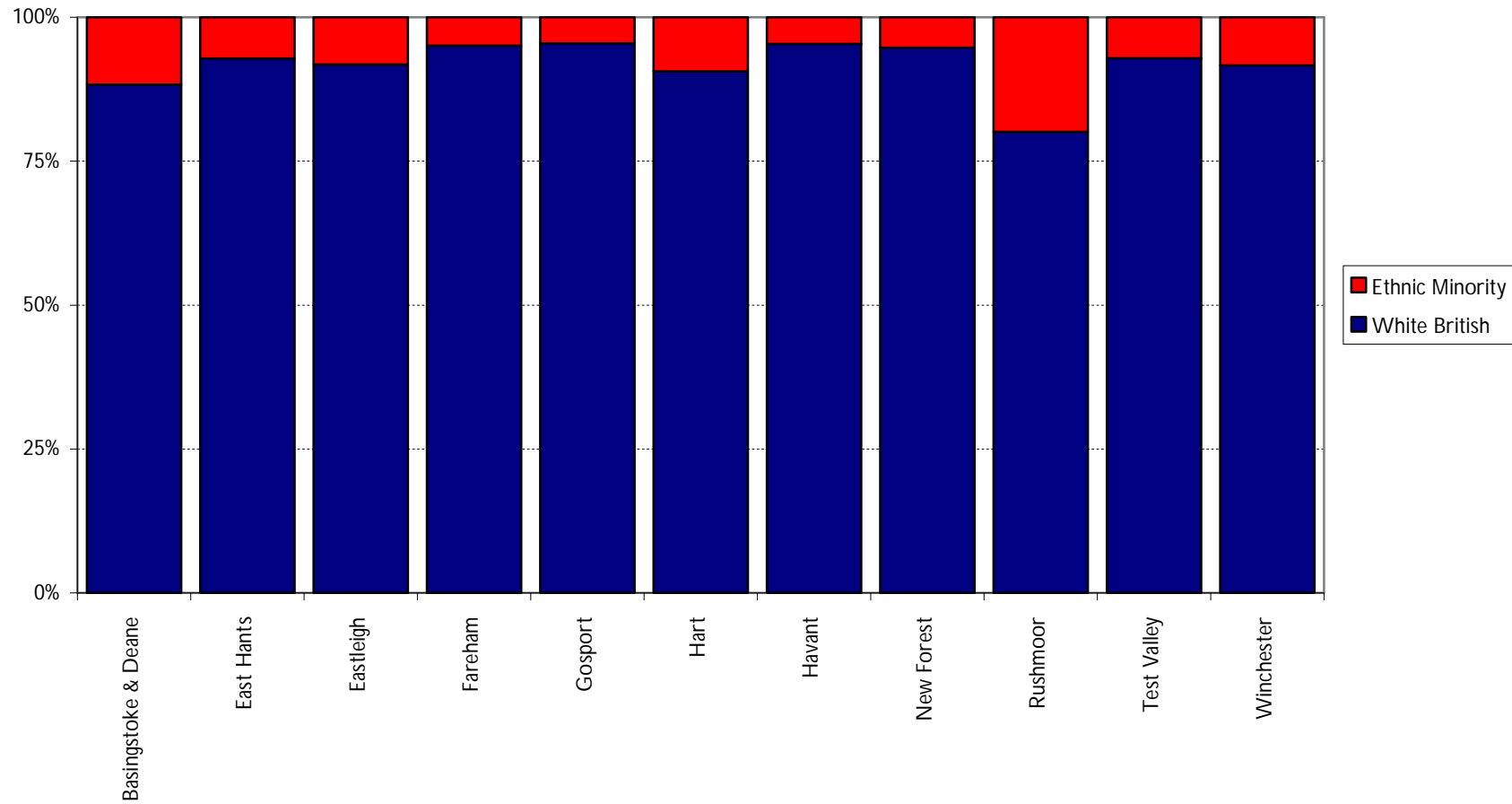
Ethnic minority C&YP from Winchester schools account for 8.2% of the overall total for the county.

There are currently 55 different languages spoken by C&YP within the district, (54 last year).

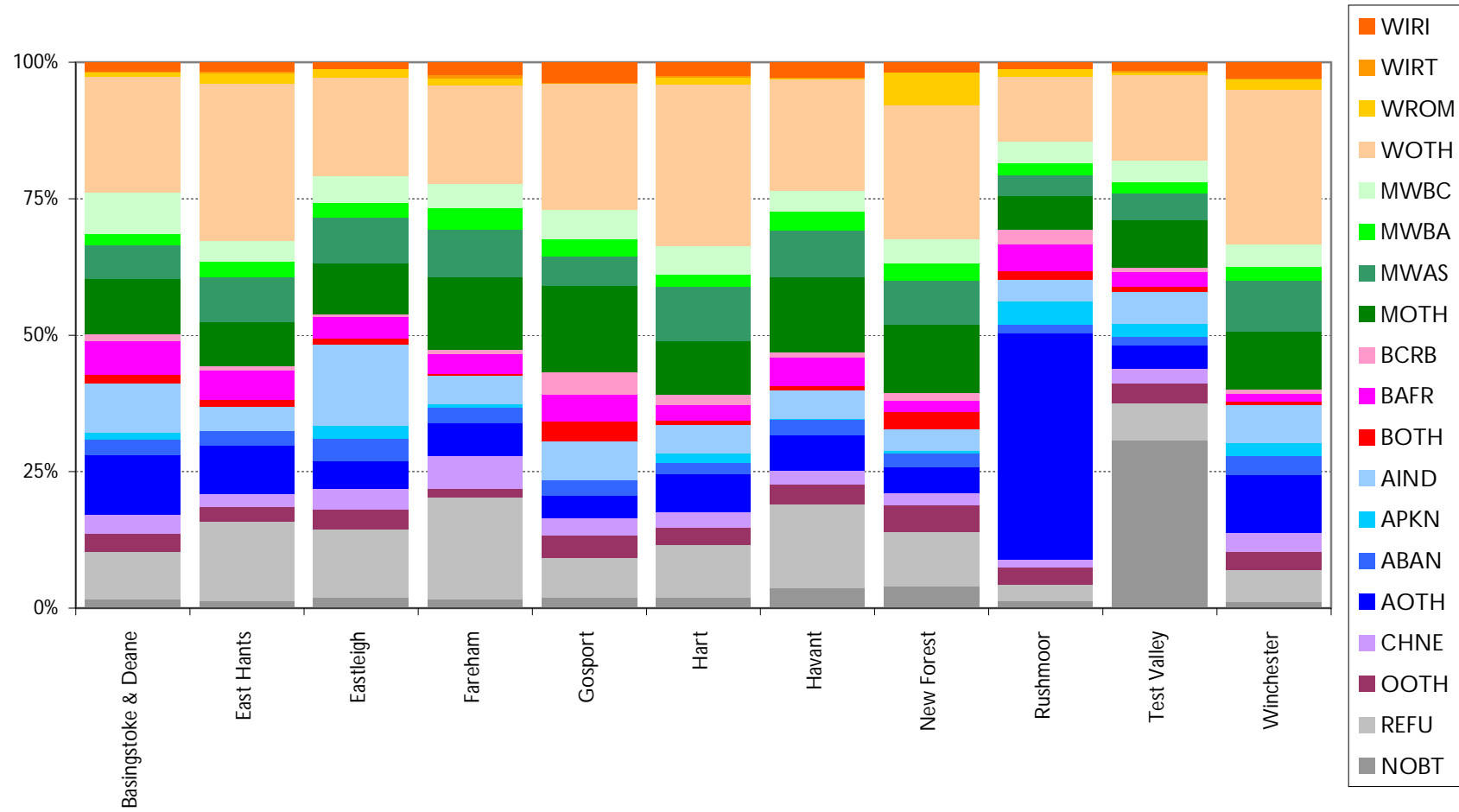
3.6% of the pupils have English as an additional language (3.1% last year).

Ethnic Minority Summary Charts

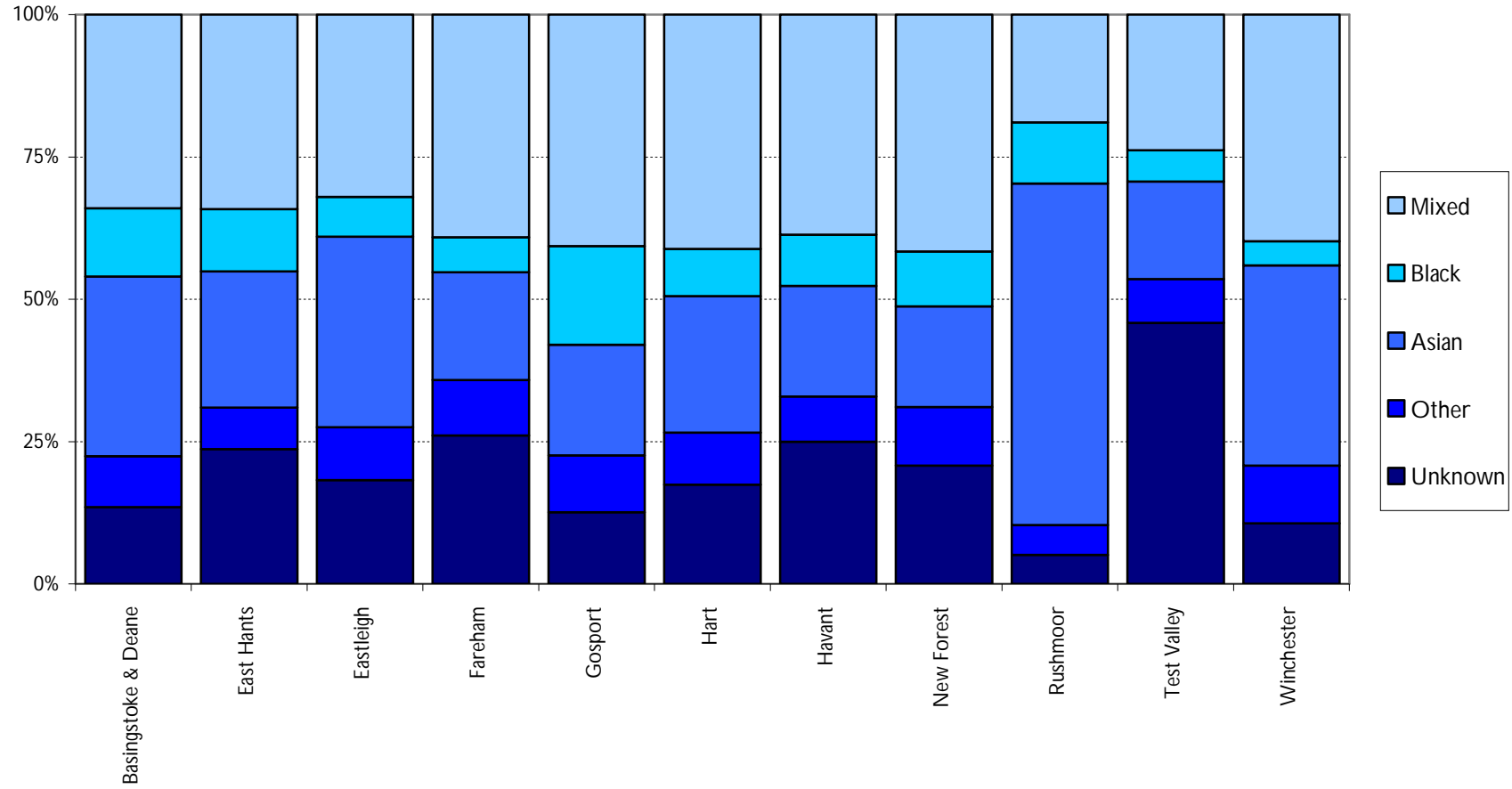
Ethnic Minority Pupils at Hampshire state-maintained schools, split by school district



Ethnic Minority Pupils at Hampshire state-maintained schools, split by school district



Ethnic Minority Pupils at Hampshire state-maintained schools, split by school district



Ethnic Minority Summary

This table gives an ethnicity breakdown of the pupils attending a Hampshire maintained school within the district.

Ethnicity of Children in Hampshire Schools January 2010

Winchester Pupils In District = 13,449

Ethnicity	Number of Children	% of District
White-British (WBRI)	12,249	91.1%
White-Irish (WIRI)	36	0.3%
Gypsy Roma (WROM)	24	0.2%
Traveller Irish Heritage (WIRT)	<10	-
White-Any Other White (WOTH)	340	2.5%
Mixed-White Asian (MWAS)	112	0.8%
Mixed-White Black African (MWBA)	31	0.2%
Mixed-White Black Caribbean (MWBC)	48	0.4%
Mixed-Other (MOTH)	127	0.9%
Asian/Asian British-Bangladeshi (ABAN)	42	0.3%
Asian/Asian British-Indian (AIND)	83	0.6%
Asian/Asian British-Pakistani (APKN)	29	0.2%
Asian/Asian British-Other (AOTH)	127	0.9%
Black/Black British-Caribbean (BCRB)	<10	-
Black/Black British-African (BAFR)	18	0.1%
Black/Black British-Other (BOTH)	<10	-
Chinese (CHNE)	42	0.3%
Any Other Ethnic Group (OOTH)	39	0.3%
Not Obtained (NOBT)	14	0.1%
Refused (REFU)	71	0.5%
Total Ethnic Minority Pupils	1,115	8.3%

Notes:

Any ethnicity group not included in the following categories has been counted as an ethnic minority:- WBRI, REFU, NOBT

Includes pupils in all Hampshire Nursery, Primary, Secondary and Special schools. If a pupil is dually registered they will be counted once at each school attended.

This data is accurate as of the 22nd February 2010 and was taken from the January 2009 School Census. The numbers were compiled before the DCSF duplicate pupil checking exercise.

Languages Summary

This table details the first languages spoken by the children attending a Hampshire maintained school within the district.

First Language of Children in Hampshire Schools January 2010

Winchester	Total Pupils in District =	13,423	
Language	Principally Where Spoken	Number of Children	% of District
English	England	12,801	95.4%
Believed to be English		137	1.0%
Nepali	Nepal	70	0.5%
Other than English		67	0.5%
Bengali	Bangladesh	35	0.3%
French	France, Canada	30	0.2%
Chinese	China, Taiwan	29	0.2%
Polish	Poland	27	0.2%
Tagalog/Filipino	Philippines	26	0.2%
Spanish	Spain, Columbia, Mexico	24	0.2%
Portuguese	Portugal, Brazil	16	0.1%
Panjabi	India	14	0.1%
Believed to be Other than English		12	0.1%
German	Germany	12	0.1%
Urdu	Pakistan	12	0.1%
Hindi	India	11	0.1%
Dutch/Flemish	Netherlands	9	0.1%
Malayalam	India	9	0.1%
Gujarati	India	6	0.0%
Hungarian	Hungary	6	0.0%
Russian	Russia	6	0.0%
Japanese	Japan	<5	-
Arabic	Middle East also North Africa	<5	-
Classification Pending		<5	-
Italian	Italy	<5	-
Information not obtained		<5	-
Norwegian	Norway	<5	-
Tamil	Sri Lanka	<5	-
Thai	Thailand	<5	-
Afrikaans	South Africa	<5	-
Danish	Denmark	<5	-
Greek	Greece	<5	-
Kannada	India	<5	-
Serbian/Croatian/Bosnian	Serbia/Croatia/Bosnia	<5	-
Shona	Zimbabwe	<5	-

Slovak	Slovakia	<5	-
Telugu	India	<5	-
Turkish	Turkey	<5	-
Akan	Ghana	<5	-
Burmese/Myanma	Union of Myanmar	<5	-
Czech	Czech Republic	<5	-
Dari Persian	Iran	<5	-
Ebira	Nigeria	<5	-
Efik-Ibibio	Nigeria	<5	-
Esan/Ishan	Nigeria	<5	-
Korean	Korea	<5	-
Malay	Malaysia, Indonesia	<5	-
Maltese	Malta	<5	-
Pahari (Pakistan)	Pakistan	<5	-
Pashto/Pakhto	Afghanistan, Pakistan	<5	-
Persian/Farsi	Iran, Afghanistan	<5	-
Refused		<5	-
Sotho/Sesotho	Lesotho, Botswana	<5	-
Swahili	Tanzania	<5	-
Yoruba	Nigeria	<5	-
Total EAL Pupils		477	3.6%
% of Total Hants EAL Children		8%	

These total excludes the following Language groupings:

Believed To Be English	English
British Sign Language	Information not obtained
Classification Pending	Refused

Notes:

These figures include all pupils in Nursery, Primary, Secondary and Special schools. If a pupil is dually registered they will be counted once at each school attended.

This data are accurate as of the March 1, 2010 and were taken from the January 2010 School Census.

New Referrals

This table shows the number of new referrals made to EMTAS from the district during the period April 2009 to March 2010. New arrivals are broken down by language, which is usually more readily available to schools than ethnicity when referrals are made.

Language	Number of Referrals	% of district referrals	% of all Hampshire EMTAS referrals
Nepali	11	25%	1.6%
French	<5	<15%	<1%
Chinese	<5	<15%	<1%
Portuguese	<5	<15%	<1%
Polish	<5	<15%	<1%
Thai	<5	<15%	<1%
English	<5	<15%	<1%
German	<5	<15%	<1%
Hindi	<5	<15%	<1%
Arabic	<5	<15%	<1%
Burmese	<5	<15%	<1%
Hungarian	<5	<15%	<1%
Panjabi	<5	<15%	<1%
Russian	<5	<15%	<1%
Sotho	<5	<15%	<1%
Tagalog	<5	<15%	<1%
Twi	<5	<15%	<1%
Winchester	44	100%	6.2%

New Year-R Pupils

This table gives an ethnicity breakdown of the current 'Year R' intake for the district.

District: Winchester		
Ethnicity	Number of Year R Pupils	% of All Year R Pupils
White - British	1,010	91.6%
White - Irish	<5	-
Gypsy Roma (WROM)	6	0.5%
Traveller Irish Heritage (WIRT)	<5	-
Any Other White Background	24	2.2%
White and Asian	11	1.0%
White and Black African	<5	-
White and Black Caribbean	<5	-
Any Other Mixed Background	12	1.1%
Bangladeshi	<5	-
Indian	9	0.8%
Pakistani	<5	-
Any Other Asian Background	6	0.5%
Black - Caribbean	<5	-
Black - African	<5	-
Any Other Black Background	<5	-
Chinese	<5	-
Any Other Ethnic Group	<5	-
Information Not Yet Obtained	<5	-
Refused	<5	-
Total Year R Pupils	1,103	100%
Total Ethnic Minority Year R Pupils	89	8.07

Notes:

The 'Total Ethnic Minorities' figure excludes 'White British', 'Information Not Obtained' and 'Refused'.

This data were taken from the January 2010 School Census and include all 'Year R' pupils within the district as of January 21, 2010

Year R children shown here are included within the figures shown in the ethnic minority summary earlier in the booklet. They are show here to highlight potentially new ethnic groups or languages which may not have previously been identified.

2009 Foundation Stage Profile Attainment – Table

% of pupils achieving 6 or more points

Winchester		Personal, Social and Emotional Development			Communication, Language and Literacy				Problem solving, reasoning and numeracy			Knowledge & understanding of world			78+ overall and 6+ in all PSE and CLL		
	Num of Pupils	Disposition & Attitudes	Social Development	Emotional Development	Language for Communication & Thinking	Linking sounds and letters	Reading	Writing	Numbers as labels and for counting	Calculating	Shapes Space and Measures	Physical development	creative development	PSE and CLL	Achievement Gap		
Hampshire		90%	85%	79%	84%	73%	73%	61%	90%	76%	83%	83%	89%	81%	51%	33%	
England		89%	83%	79%	82%	74%	72%	62%	88%	73%	82%	81%	90%	80%	52%	34%	
White - British	999	93%	85%	81%	85%	74%	74%	62%	91%	75%	86%	85%	90%	82%	White	53%	33%
White - Irish	<10	100%	100%	100%	100%	50%	50%	100%	100%	100%	100%	100%	100%	100%			
Gypsy / Roma	<10																
Traveller of Irish Heritage	<10	100%	0%	50%	0%	0%	0%	0%	0%	0%	0%	50%	100%	50%			
Any Other White Background	27	96%	81%	78%	81%	67%	67%	59%	93%	74%	85%	81%	89%	78%			
White and Black Caribbean	<10	100%	100%	100%	100%	0%	0%	0%	0%	0%	100%	100%	100%	100%	Mixed	52%	24%
White and Black African	<10	100%	100%	100%	100%	0%	50%	50%	100%	100%	100%	100%	100%	100%			
White and Asian	<10	83%	83%	83%	83%	67%	83%	67%	100%	83%	83%	83%	83%	83%			
Any Other Mixed Background	18	89%	83%	89%	94%	94%	89%	67%	94%	83%	89%	94%	94%	89%			
Black - Caribbean	<10																
Black - African	<10														Black		
Any Other Black Background	<10																
Indian	<10	100%	100%	80%	80%	80%	60%	60%	100%	60%	80%	80%	100%	80%			
Pakistani	<10	100%	100%	100%	100%	50%	50%	50%	100%	50%	100%	50%	100%	100%			
Bangladeshi	<10	67%	33%	33%	50%	50%	33%	33%	83%	50%	50%	50%	67%	50%			
Any Other Asian Background	11	82%	73%	36%	45%	55%	27%	27%	91%	45%	55%	45%	91%	55%	Asian	29%	42%
Chinese	<10																
Any Other Ethnic Group	<10	100%	100%	100%	100%	80%	80%	80%	100%	80%	80%	100%	100%	80%			
Information Not Yet Obtained	<10	75%	75%	75%	75%	50%	75%	50%	100%	100%	100%	75%	75%	75%			
Refused	<10	100%	86%	100%	100%	86%	86%	71%	86%	86%	100%	86%	100%	100%			
Total	1,097	93%	85%	81%	84%	73%	73%	61%	91%	75%	85%	85%	90%	82%	52%	33%	

Notes

England data as published by DCSF

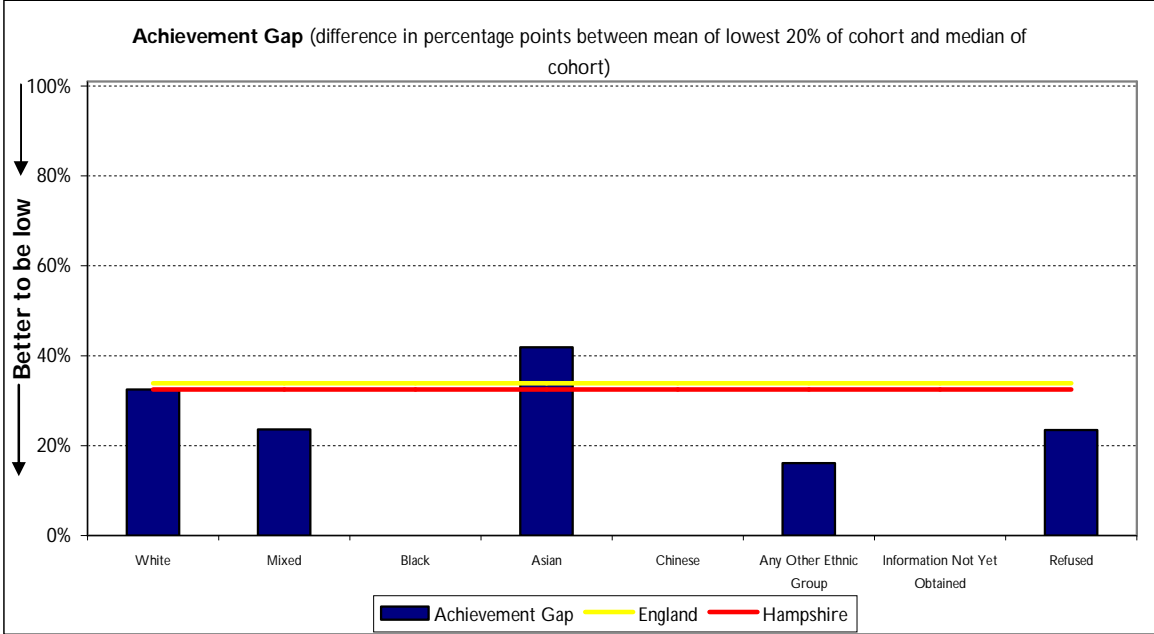
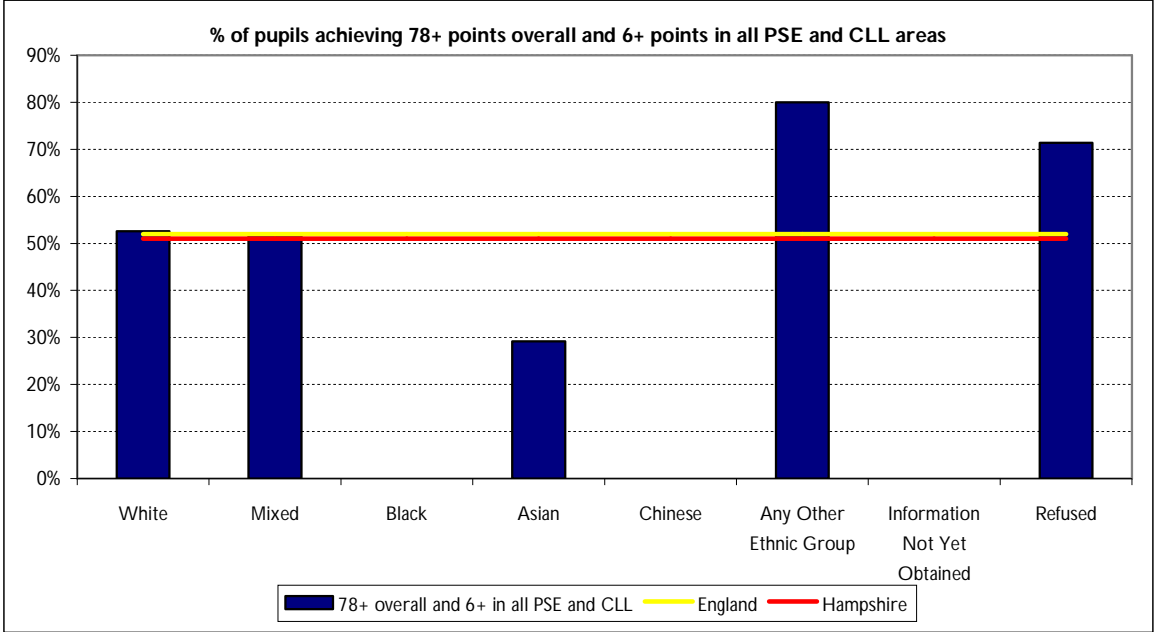
DCSF: Early Years Foundation Stage Profile Results in England, 2008/09 (14 October 2009)

Hampshire data and ethnicity breakdowns created from Hampshire held results data

Keypas export 28/9/09

Achievement gap is the percentage gap in achievement between the lowest 20% of achieving children in a local authority (mean), and the score of the median child in the same authority expressed as a percentage of the median score

2009 Foundation Stage Profile Attainment - Charts



2009 Key Stage / GCSE Attainment - table

Winchester

	Key Stage 1 (Provisional)					Key Stage 2 (Provisional)					Key Stage 3 (Provisional)				Key Stage 4 GCSE (Provisional)			
	Num of Pupils	Reading % L2+	Writing % L2+	Maths % L2+	Science % L2+	Num of Pupils	English % L4+	Maths % L4+	English AND Maths % L4+	Science % L4+	Num of Pupils	English % L5+	Maths % L5+	Science % L5+	Num of Pupils	% 5+ A-C	% 5+ A-C (Inc Eng & Maths)	% Eng AND Maths A*-C
Hampshire		88%	85%	92%	94%		82%	81%	75%	91%		79%	81%	83%		70%	55%	56%
England		84%	81%	89%	89%		80%	79%	72%	88%						70%	50%	55%
White - British	946	88%	85%	92%	92%	982	82%	83%	77%	92%	1,476	86%	87%	88%	1,133	83%	71%	72%
White - Irish	<10	100%	100%	100%	100%	<10	100%	100%	100%	100%	<10	67%	100%	100%	<10	75%	75%	75%
Gypsy / Roma	<10	33%	33%	33%	33%	<10					<10	50%	50%	50%	<10	0%	0%	0%
Traveller of Irish Heritage	<10					<10					<10				<10			
Any Other White Background	27	85%	89%	93%	96%	27	89%	93%	85%	96%	29	95%	79%	89%	21	86%	86%	86%
White and Black Caribbean	<10	75%	75%	75%	75%	<10	100%	50%	50%	50%	<10	50%	50%	50%	<10	100%	100%	100%
White and Black African	<10	100%	100%	100%	100%	<10	75%	50%	50%	100%	<10	50%	100%	100%	<10			
White and Asian	10	90%	90%	100%	100%	<10	100%	100%	100%	100%	14	100%	92%	92%	<10	100%	100%	100%
Any Other Mixed Background	11	91%	91%	100%	100%	<10	100%	100%	100%	100%	11	100%	100%	100%	<10	100%	67%	67%
Black - Caribbean	<10					<10					<10	100%	100%	100%	<10	100%	0%	0%
Black - African	<10	100%	50%	100%	50%	<10	67%	67%	67%	100%	<10	50%	50%	50%	<10	100%	67%	67%
Any Other Black Background	<10	100%	100%	100%	100%	<10					<10				<10			
Indian	<10	67%	67%	67%	67%	<10	80%	80%	80%	80%	<10	100%	88%	75%	<10	100%	100%	100%
Pakistani	<10	100%	100%	100%	100%	<10	50%	50%	50%	50%	<10	100%	75%	50%	<10	0%	0%	0%
Bangladeshi	<10	100%	100%	100%	100%	<10	100%	50%	50%	100%	<10	100%	100%	100%	<10	100%	100%	100%
Any Other Asian Background	12	75%	67%	83%	75%	<10	50%	50%	50%	50%	17	78%	63%	75%	<10	40%	0%	0%
Chinese	<10	100%	100%	100%	100%	<10	75%	75%	75%	100%	<10	78%	88%	88%	<10	89%	67%	67%
Any Other Ethnic Group	<10	100%	100%	100%	100%	<10	100%	100%	100%	100%	<10	100%	100%	100%	<10	75%	63%	63%
Information Not Yet Obtained	<10					<10					17	83%	67%	67%	<10			
Refused	<10	75%	50%	100%	100%	13	92%	92%	85%	100%	15	73%	92%	100%	15	60%	53%	53%
Total	1,037	88%	85%	92%	92%	1,075	83%	83%	77%	92%	1,618	86%	87%	88%	1,169	83%	71%	72%

Notes

England and Hampshire data as published by DCSF

DCSF: National Curriculum Assessments at Key Stage 1 in England, 2009 (25 August 2009)

DCSF: National Curriculum Assessments at Key Stage 2 in England 2008/09 (Revised) (1 December 2009)

(KS3 data not available nationally - taken from Hampshire held results data)

DCSF: GCSE and Equivalent Results in England, 2008/09 (Provisional) (15 October 2009)

Ethnicity breakdowns created from Hampshire held results data

KS1 from Keygas export 17/8/09

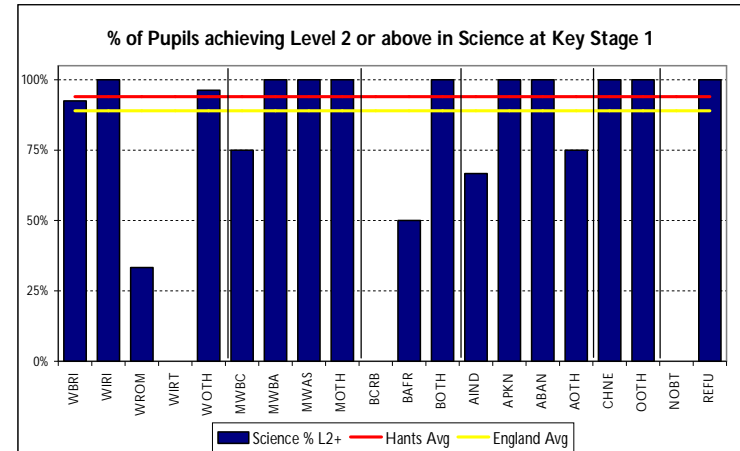
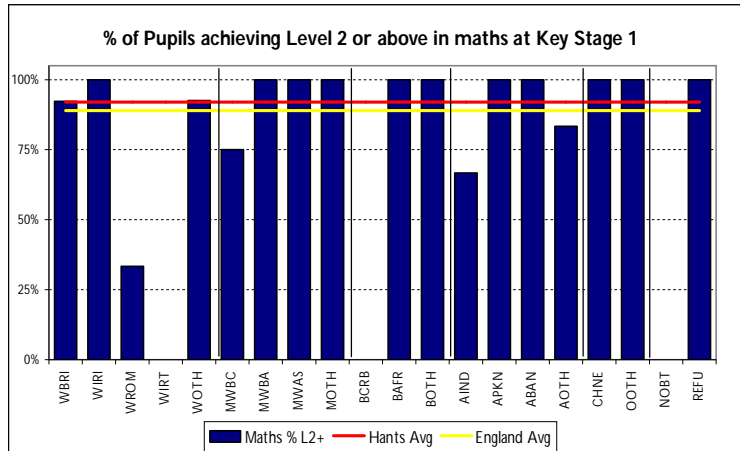
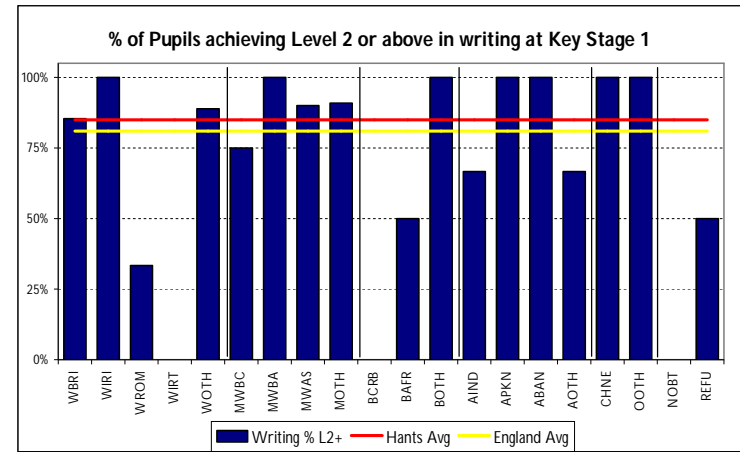
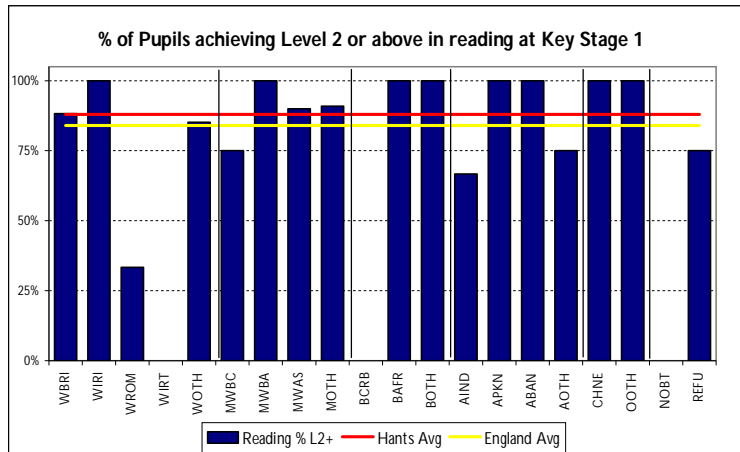
KS2 from Keygas export 4/3/10

KS3 from Keygas export 4/3/10

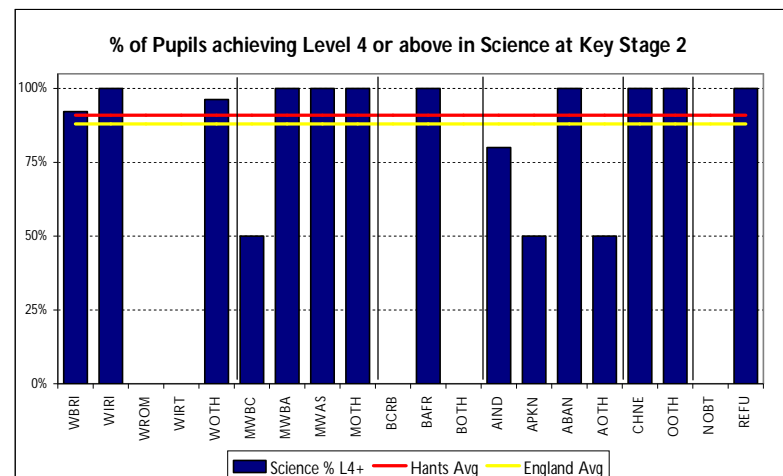
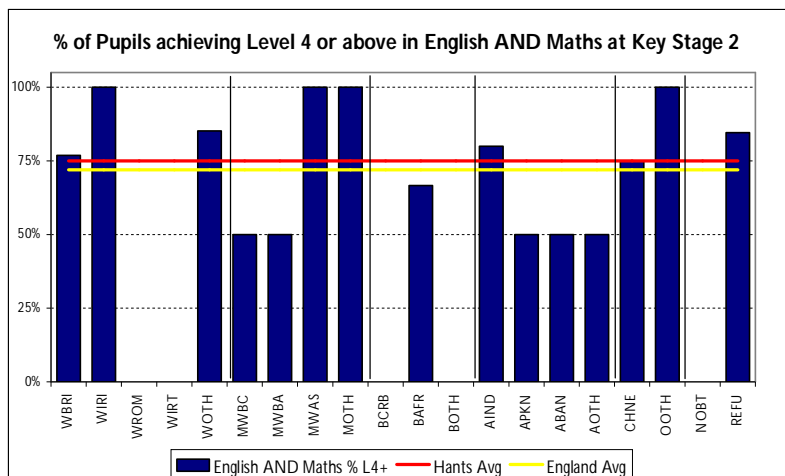
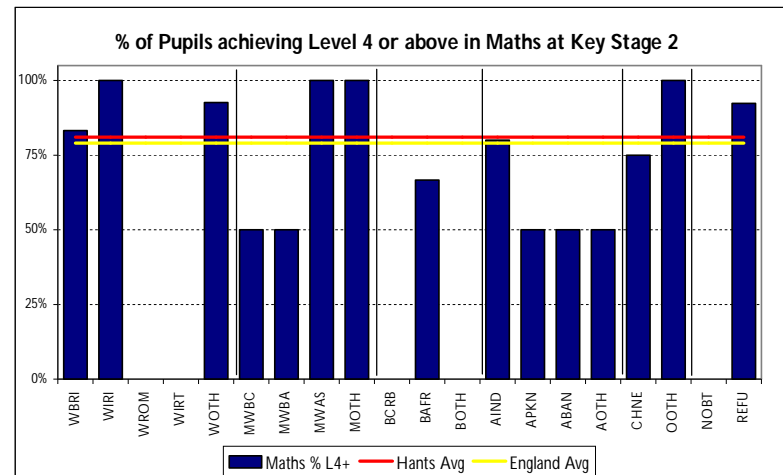
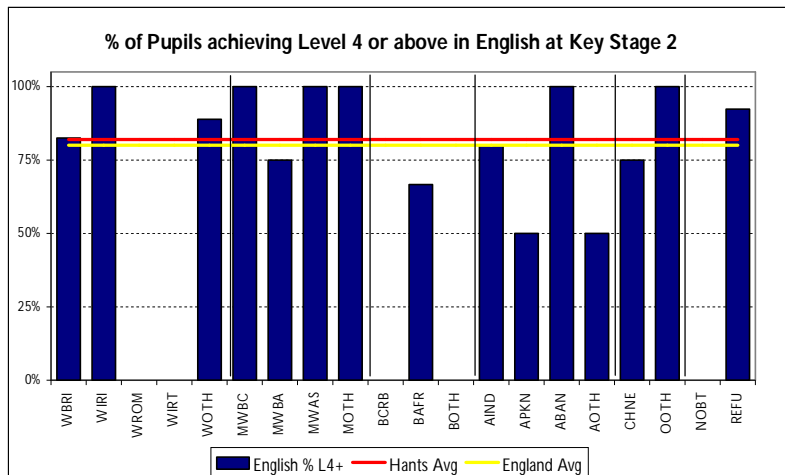
GCSE as at 4/3/10 as held in EPAS

2009 Key Stage / GCSE Attainment - charts

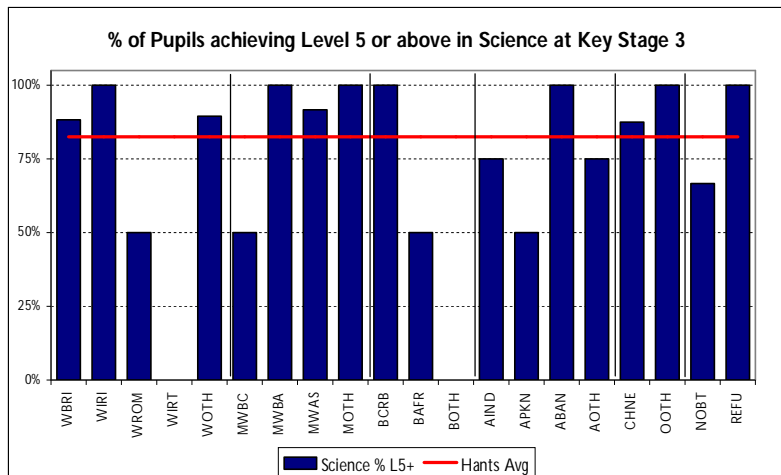
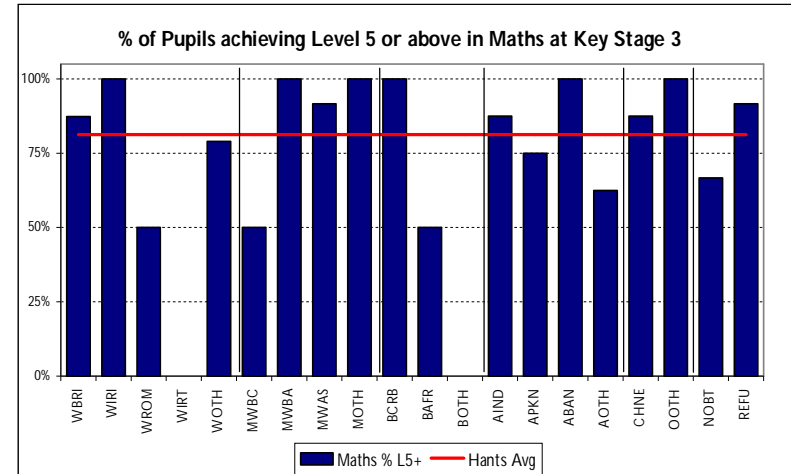
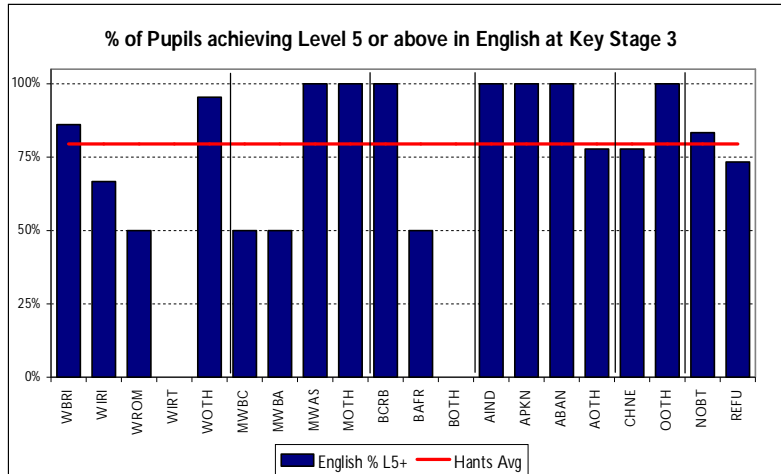
Key Stage 1 attainment charts
District-level: Winchester



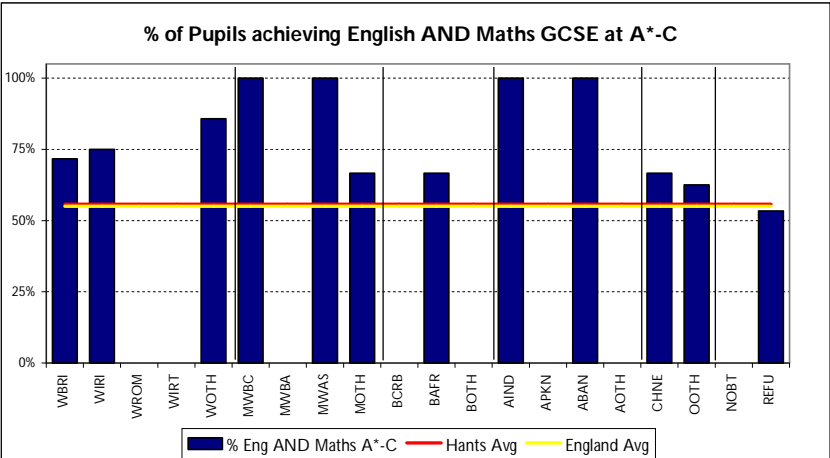
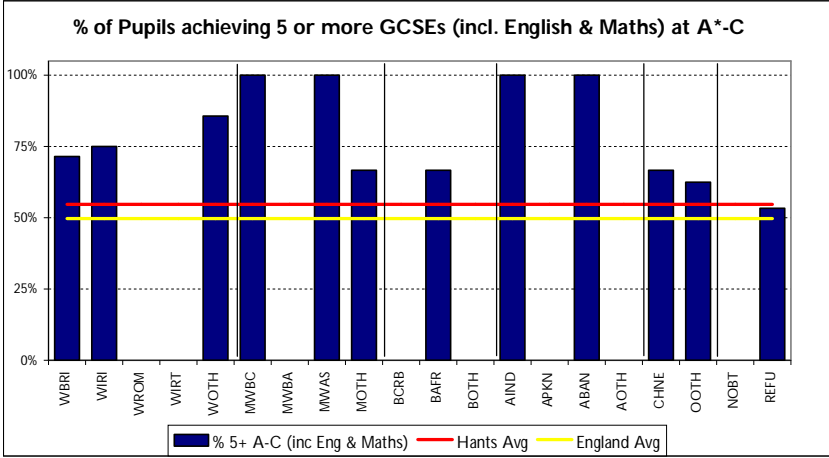
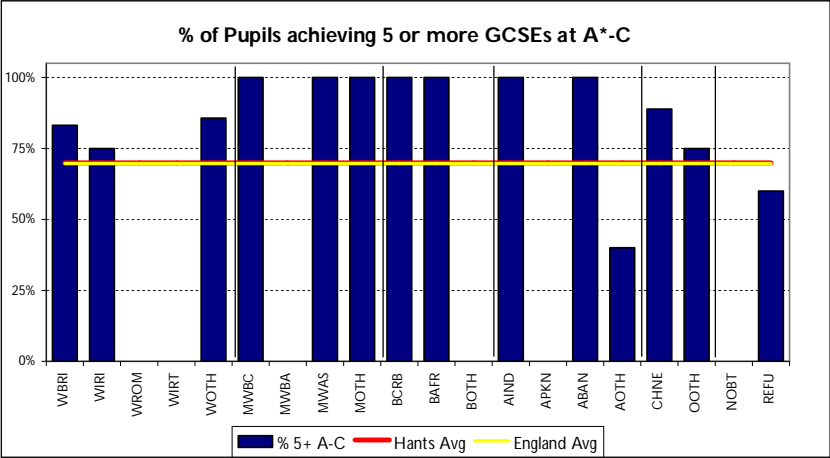
Key Stage 2 attainment charts
District-level: Winchester



Key Stage 3 attainment charts
District-level: Winchester



Key Stage 4 (GCSE) attainment charts
District-level: Winchester



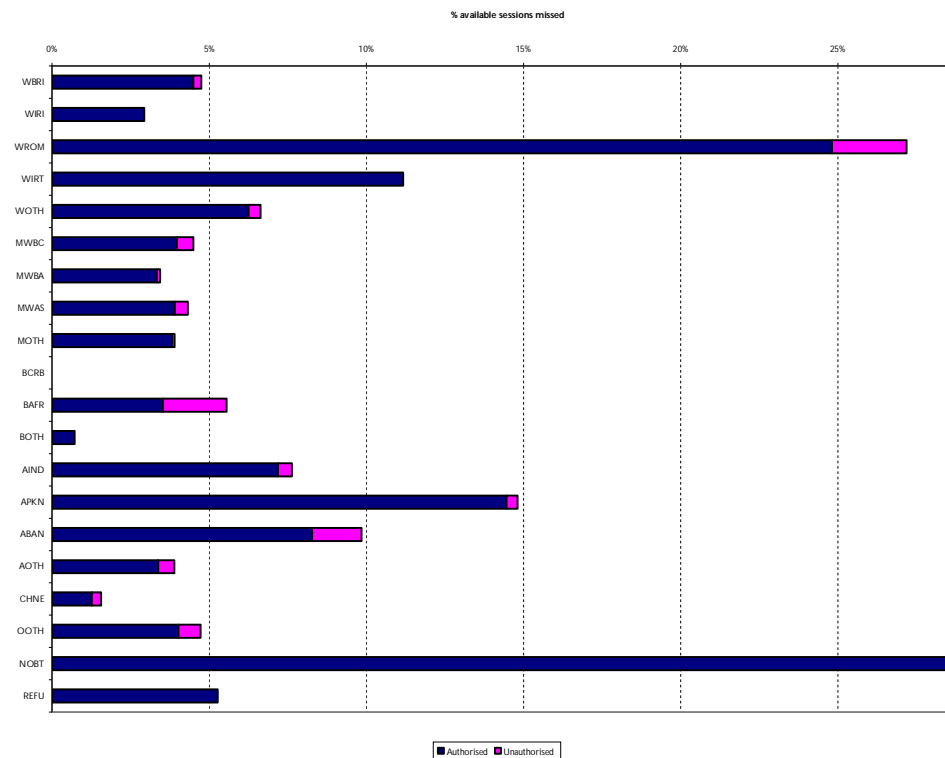
2009 Narrowing The Attainment Gap – county level

This chart displays the difference in percentage points between each ethnic group and White British in the percentage of pupils achieving the standard at each key-stage. The figures are averaged over a three year period (2007-2009) to smooth out fluctuations in low numbers.

	Key Stage 1			Key Stage 2			Key Stage 3			Key Stage 4	
	Reading Level	Writing Level	Maths Level	English Level	Maths Level	Science Level	English Level	Maths Level	Science Level	% 5+ A-C	% 5+ A-C (inc Eng & Maths)
	2+	2+	2+	4+	4+	4+	5+	5+	5+	% 5+ A-C	
White - Irish	6	4	5	6	8	5	1	2	3	5	7
Gypsy / Roma	-45	-36	-38	-34	-33	-18	-51	-54	-54	-53	-57
Traveller of Irish Heritage	-75	-72	-17	-21	-44	-38	-61	-64	-29	-53	-55
Any Other White Background	-5	-4	-1	-3	4	0	-1	3	1	3	3
White and Black Caribbean	1	2	3	-3	-1	-1	4	3	5	-2	-1
White and Black African	0	-4	1	-1	-2	4	11	3	-1	2	12
White and Asian	4	6	2	7	6	5	8	9	9	20	15
Any Other Mixed Background	0	0	-1	3	1	2	3	4	3	4	5
Black - Caribbean	1	-2	-2	-10	-18	-4	-14	-23	-16	-20	-19
Black - African	-4	-6	-5	-7	-15	-7	1	-3	-3	-4	-3
Any Other Black Background	2	-1	2	-11	-18	-7	-2	-21	-19	-28	-18
Indian	4	3	1	9	11	6	13	12	7	23	17
Pakistani	1	-1	-2	-13	-9	-15	2	-3	-6	19	18
Bangladeshi	-5	-1	-8	-4	-14	-2	-4	-11	-11	-6	-5
Any Other Asian Background	-4	-5	-2	-18	-10	-12	-17	-9	-18	-20	-9
Chinese	0	1	2	3	10	0	2	16	7	27	24
Any Other Ethnic Group	-6	-7	-5	-6	0	1	-14	-14	-17	-6	-3
Information Not Yet Obtained	-23	-24	-11	-4	-8	1	-17	-15	-20	-25	-25
Refused	-3	-3	-1	-2	0	0	-7	-7	-6	-11	-11

Autumn Term 2009 – Primary School District Absence Summary

Winchester	No of pupils	Available sessions	Total Absence	Authorised absence	Un- authorised absence
White - British	5,810	797,848	4.7%	4.5%	0.3%
White - Irish	17	2,352	2.9%	2.9%	0.0%
Gypsy / Roma	16	1,983	27.2%	24.8%	2.4%
Traveller of Irish Heritage	<5	-	11.2%	11.2%	0.0%
Any Other White Background	186	24,994	6.6%	6.2%	0.4%
White and Black Caribbean	25	3,448	4.5%	4.0%	0.5%
White and Black African	14	1,949	3.4%	3.3%	0.1%
White and Asian	44	6,036	4.3%	3.9%	0.4%
Any Other Mixed Background	85	11,537	3.9%	3.8%	0.1%
Black - Caribbean	<5	-	-	-	-
Black - African	12	1,332	5.6%	3.5%	2.0%
Any Other Black Background	2	278	0.7%	0.7%	0.0%
Indian	27	3,630	7.6%	7.2%	0.4%
Pakistani	<5	-	14.8%	14.5%	0.3%
Bangladeshi	28	3,626	9.8%	8.3%	1.6%
Any Other Asian Background	57	7,778	3.9%	3.4%	0.5%
Chinese	12	1,662	1.6%	1.3%	0.3%
Any Other Ethnic Group	27	3,679	4.7%	4.0%	0.7%
Information Not Yet Obtained	<5	-	45.0%	45.0%	0.0%
Refused	23	3,129	5.3%	5.3%	0.0%
District total	6,394	876,253	4.9%	4.6%	0.3%



Notes

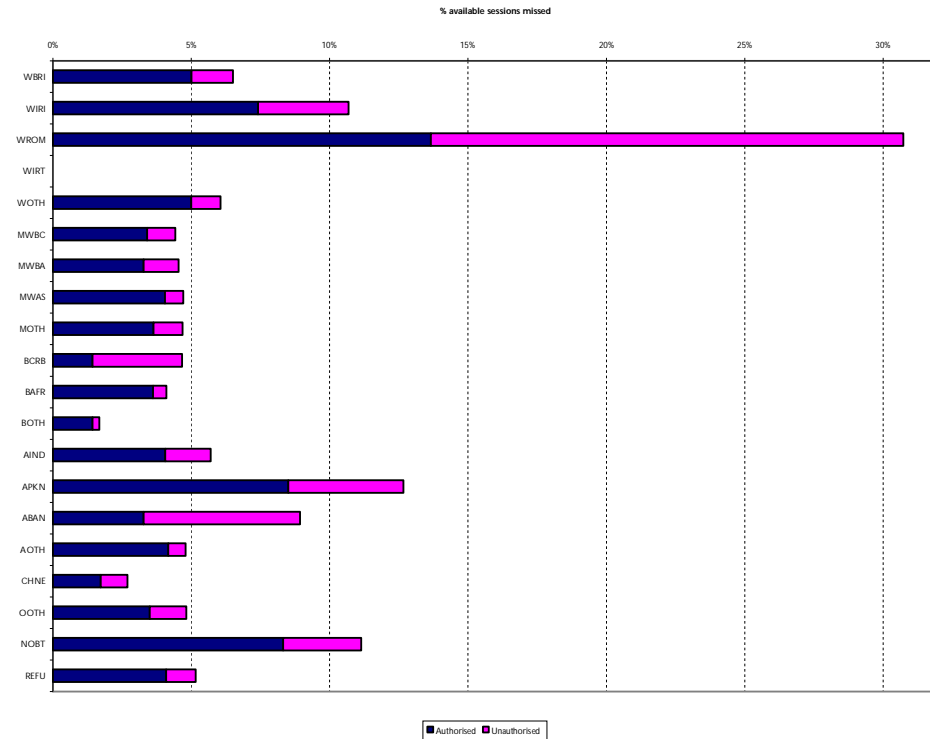
Data taken from the January 2010 school census

Includes all pupils who attended a school during the autumn term

Chart is scaled to show detail for most groups. As there is only one NOBT pupil, the chart has not been scaled for this category.

Autumn Term 2009 – Secondary School District Absence Summary

Winchester	No of pupils	Available sessions	Total Absence	Authorised absence	Un-authorised absence
White - British	5,488	744,308	6.5%	5.0%	1.5%
White - Irish	14	1,928	10.7%	7.4%	3.3%
Gypsy / Roma	<10	-	30.7%	13.7%	17.1%
Traveller of Irish Heritage	<5	-			
Any Other White Background	134	18,250	6.1%	5.0%	1.1%
White and Black Caribbean	18	2,466	4.4%	3.4%	1.0%
White and Black African	12	1,586	4.5%	3.3%	1.3%
White and Asian	59	8,092	4.7%	4.1%	0.7%
Any Other Mixed Background	28	3,820	4.7%	3.6%	1.0%
Black - Caribbean	<10	-	4.7%	1.4%	3.2%
Black - African	<10	-	4.1%	3.6%	0.5%
Any Other Black Background	<5	-	1.7%	1.4%	0.2%
Indian	45	6,210	5.7%	4.1%	1.6%
Pakistani	22	3,056	12.7%	8.5%	4.2%
Bangladeshi	12	1,646	8.9%	3.3%	5.7%
Any Other Asian Background	59	7,772	4.8%	4.2%	0.6%
Chinese	15	2,078	2.7%	1.7%	1.0%
Any Other Ethnic Group	11	1,514	4.8%	3.5%	1.3%
Information Not Yet Obtained	11	1,490	11.1%	8.3%	2.8%
Refused	48	6,282	5.2%	4.1%	1.1%
District total	5,998	813,402	6.5%	5.0%	1.5%



Notes

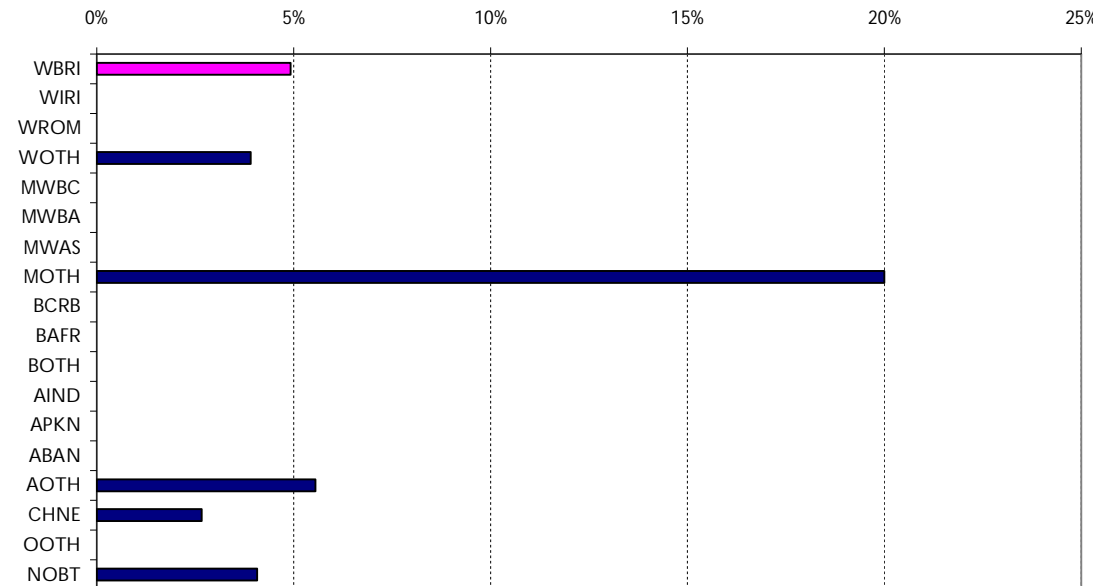
Data taken from the January 2010 school census

Includes all pupils who attended a school during the autumn term

NEET Figures By Ethnicity - March 2010

Winchester	Monthly	Monthly	Monthly	% adjusted
	average	average	average	
	adjusted	adjusted	District	
	NEETs	EETs	Total	NEET
Hampshire				6.3%
England				6.7%
White - British	182.0	3,514.3	3,696.3	4.9%
White - Irish	<5	-	-	0.0%
Gypsy / Roma	<5	-	-	
Any Other White Background	<5	-	-	3.9%
White and Black Caribbean	<5	-	-	0.0%
White and Black African	<5	-	-	0.0%
White and Asian	<5	-	-	0.0%
Any Other Mixed Background	<5	-	-	20.0%
Black - Caribbean	<5	-	-	0.0%
Black - African	<5	-	-	0.0%
Any Other Black Background	<5	-	-	0.0%
Indian	<5	-	-	0.0%
Pakistani	<5	-	-	0.0%
Bangladeshi	<5	-	-	0.0%
Any Other Asian Background	<5	-	-	5.6%
Chinese	<5	-	-	2.7%
Any Other Ethnic Group	<5	-	-	0.0%
Information Not Yet Obtained	26.0	612.7	638.7	4.1%
Total	216	4,328	4,544	4.7%

% Adjusted NEET by Ethnic Group



Notes

Data source:

Hampshire and England data: DCSF January Risk Scan table

District-level and ethnic split: Hampshire CorePlus 8/3/10

Comparisons with the Hampshire figure are for illustration purposes only. They should be treated with caution due to differences in calculation methods at district and county level.

Ethnicity comparisons are with White-British

Raw NEET figures are adjusted to allow for young people whose records have expired.

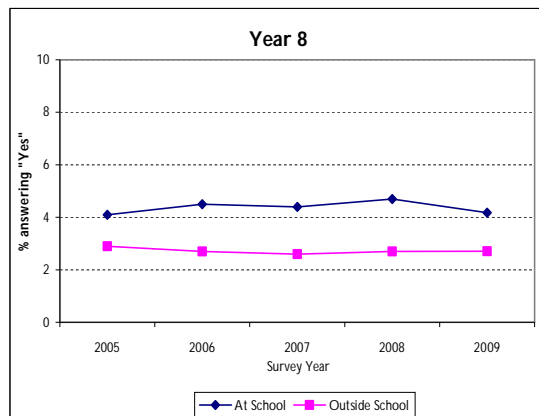
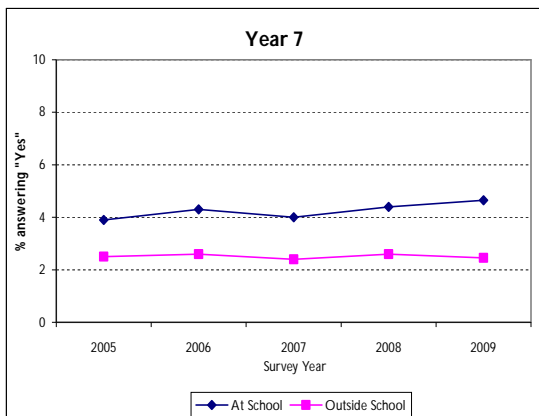
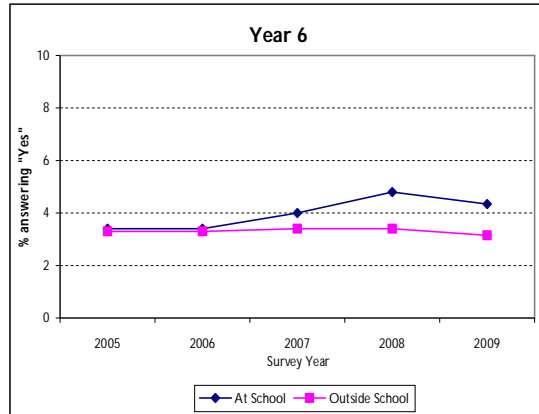
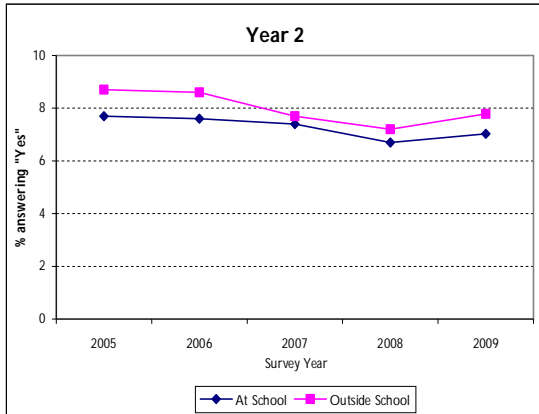
2009 Pupil Attitude Survey

Pupil Attitude Survey - bullying due to discrimination

Part A) I have been bullied **at school** on the basis of my race/religion/language*

Part B) I have been bullied **outside school** on the basis of my race/religion/language*

Hampshire-county level, trend by yeargroup



District vs Hampshire 2009

