

# Savour a real flavour of Hampshire

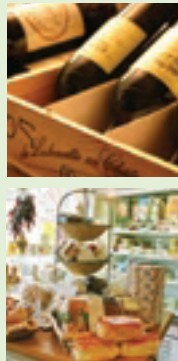


Hampshire offers a wealth of fabulous food and drink that has been grown, reared or produced in the county, and which is available from an increasing number of pubs, restaurants, hotels, delicatessens and farm shops who want to be associated with selling good quality local produce.

County food group Hampshire Fare produces a useful guide to 'Producers of

food, drink and craft in Hampshire' which includes details of eateries and outlets where local food and drink can be enjoyed, and also of caterers who can bring food to your office, party or event. This is available free, telephone 01962 845999 or visit [www.hampshirefare.co.uk](http://www.hampshirefare.co.uk). Hampshire Fare also organises the hugely popular Hampshire Food Festival fortnight, held annually at the end of June/early July.

Hampshire is also home to the largest farmers' market in the UK held in Winchester, where visitors can buy everything from meat, game and fish to bread, vegetables, dairy products, beer and wine direct from around 90 producers. These are a great showcase for Hampshire food, drink and craft. Hampshire Farmers Markets are also held in other market towns including Alton, Petersfield, Romsey, Southsea, Southampton and Andover. Full details are available from [www.hampshirefarmersmarkets.co.uk](http://www.hampshirefarmersmarkets.co.uk) telephone 01420 588671.



By buying food and drink from Hampshire, you can not only enjoy the best local produce, but also make an essential contribution to the sustainability of Hampshire's beautiful countryside, the rural economy, the environment and our market towns.

## Win a Hampshire local produce hamper!

Complete and return this coupon to be entered in a free prize draw

Name: .....

Address .....

Email: .....

If you would like to receive further information on tourism in Hampshire please tick this box

Closing date – 31st December 2006

Return to: Tourism Section, Hampshire County Council, Recreation & Heritage Dept., Mottisfont Court, High Street, Winchester SO2 3ZF

The Data Protection Act 1988: Your details will only be used for the purpose stated and will not be shared amongst other agencies



# Tourist Information

## Tourist information centres

To obtain friendly advice to help you plan your visit to Hampshire, please contact -

### Aldershot

Tel: 01252 320968  
Fax: 01252 311479  
E-mail: [mail@rushmoorvic.com](mailto:mail@rushmoorvic.com)  
[www.visit-northhampshire.org.uk](http://www.visit-northhampshire.org.uk)

### Alton

Tel: 01420 88448  
Fax: 01420 543916  
E-mail: [altoninfo@btconnect.com](mailto:altoninfo@btconnect.com)  
[www.visit-easthampshire.org.uk](http://www.visit-easthampshire.org.uk)

### Andover

Tel: 01264 324320  
Fax: 01264 345650  
E-mail: [andovetio@testvalley.org.uk](mailto:andovetio@testvalley.org.uk)  
[www.visit-testvalley.org.uk](http://www.visit-testvalley.org.uk)

### Hayling Island

Tel: 023 9246 7111  
Fax: 023 9246 5626  
E-mail: [tourism@havant.gov.uk](mailto:tourism@havant.gov.uk)  
[www.havant.gov.uk](http://www.havant.gov.uk)

### The New Forest

Tel: 01590 689000  
Fax: 01590 673990  
E-mail: [information@nfdc.gov.uk](mailto:information@nfdc.gov.uk)  
[www.thenewforest.co.uk](http://www.thenewforest.co.uk)

### Petersfield

Tel: 01730 268829  
Fax: 01730 266679  
E-mail: [petersfieldinfo@btconnect.com](mailto:petersfieldinfo@btconnect.com)  
[www.visit-easthampshire.org.uk](http://www.visit-easthampshire.org.uk)

### Portsmouth

Tel: 023 9282 6722  
Fax: 023 9282 2693  
E-mail: [vis@portsmouthcc.gov.uk](mailto:vis@portsmouthcc.gov.uk)  
[www.visitportsmouth.co.uk](http://www.visitportsmouth.co.uk)

### Romsey

Tel: 01794 512987  
Fax: 01794 512987  
E-mail: [romseytio@testvalley.gov.uk](mailto:romseytio@testvalley.gov.uk)  
[www.visit-testvalley.org.uk](http://www.visit-testvalley.org.uk)



### Southampton

Tel: 023 8083 3333  
Fax: 023 8083 3381  
E-mail: [tourist.information@southampton.gov.uk](mailto:tourist.information@southampton.gov.uk)  
[www.visit-southampton.co.uk](http://www.visit-southampton.co.uk)

### Winchester

Tel: 01962 840500  
Fax: 01962 850348  
E-mail: [tourism@winchester.gov.uk](mailto:tourism@winchester.gov.uk)  
[www.visitwinchester.co.uk](http://www.visitwinchester.co.uk)

## Useful Websites

### Hampshire County Council

[www.hants.gov.uk/discover](http://www.hants.gov.uk/discover)

### Tourism South East

[www.visitsoutheastengland.com](http://www.visitsoutheastengland.com)

It is advisable to check directly with the establishments concerned to ensure that the information is accurate at the time.

Photos: copyright David Packman

**TOURISM SOUTH EAST**



Published by Hampshire County Council and Tourism South East, June 2006

# Country Pursuits in Hampshire



## From golf to fishing

Enjoy the great activities available to you in Hampshire



**TOURISM SOUTH EAST**



# Hampshire has it all

## Hampshire offers the ideal location for lovers of country pursuits

The county has a long association with traditional pursuits, from horse riding in the ancient hunting grounds of the New Forest to fishing in the famed River Test. As well as rolling downs, tranquil rivers, majestic woodlands and picture postcard villages, Hampshire offers top quality accommodation and superb facilities that are guaranteed to provide the perfect short break.



Our welcoming hotels will be happy to arrange a variety of country activities, from fly fishing and clay pigeon or pheasant shooting to horse riding and golf. Hampshire has many clubs, organisations and companies providing an exciting range of country pursuits and with many local shops stocking specialist sporting equipment you'll be sure to get the most out of your stay.

No holiday is complete without good food and Hampshire is fast gaining a reputation for the quality of its local produce. You can sample our fine beer and wines, distinctive cheeses and succulent meat and game in many of our hotels, restaurants and country pubs while specialist gourmet breaks, lively farmers' markets and Hampshire Fare events will add to the culinary delights.

We also have world famous gardens for you to explore, as well as lovely walks. If you can tear yourself away from the countryside, the coastline - with its stunning views of the Isle of Wight, sailing heritage and wide range of water sports - is only a short distance away.



Getting to Hampshire couldn't be simpler, with fast access via the M3 and frequent trains linking London and the south.

If you love country pursuits, you'll love Hampshire.

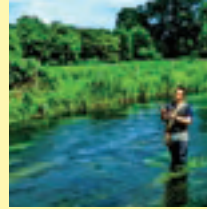


# Great sporting leisure breaks

Enjoy horse riding, fishing, shooting and golf at some of our excellent centres, which welcome both beginners and the more experienced. Many hotels have leisure facilities on site and all will be happy to arrange these activities for you - see our fantastic range of opportunities overleaf. A number of short break packages are also available for country pursuits.

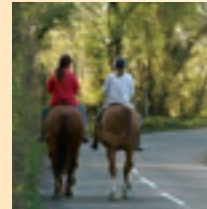
## Fishing

The chalk stream rivers of Hampshire, with their clear waters and unspoilt meadows, are renowned the world over. The Rivers Test and Itchen hold an unrivalled reputation for river game fishing while still water and coarse fishing are also available. Day and season tickets can be purchased and many centres provide qualified guides and instructors.  
[www.environment-agency.gov.uk](http://www.environment-agency.gov.uk)  
[www.go-fish.co.uk/hampshire.htm](http://www.go-fish.co.uk/hampshire.htm)  
[www.fishingnet.com/England/Hampshire.htm](http://www.fishingnet.com/England/Hampshire.htm)



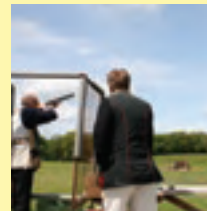
## Horse-riding

Hampshire is a horse-riding paradise. There are miles of bridleways through scenic countryside and trails for both the novice and the experienced rider. Numerous accredited schools provide first rate tuition and some centres offer short break holidays.  
[www.bhs.org.uk](http://www.bhs.org.uk)  
[www.hants.gov.uk/countryside/horseriding/](http://www.hants.gov.uk/countryside/horseriding/)  
[www.horseweb-uk.com](http://www.horseweb-uk.com)



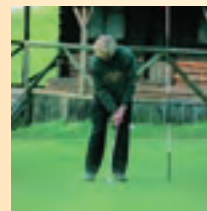
## Clay and game shooting

Safe and qualified instruction is available at all levels for the exhilarating sport of clay pigeon shooting including facilities for children aged 10+. Places on pheasant and partridge shoots can also be booked, with a friendly and personal service offered to both the beginner and the experienced gun.  
[www.cpsa.co.uk](http://www.cpsa.co.uk)



## Golf

Hampshire has over 80 golf courses and offers a wide range of private, pay and play and public clubs in beautiful locations, including both downland and parkland courses. Top quality facilities, expert tuition and specialist breaks are also available.  
[www.golftoday.co.uk](http://www.golftoday.co.uk)  
[www.getintogolf.org](http://www.getintogolf.org)  
[www.hampshiregolf.co.uk](http://www.hampshiregolf.co.uk)



# Country breaks

## Gourmet Breaks

Four special gourmet breaks have been devised to provide special interest short break packages for food lovers. Details at  
[www.visitwinchester.co.uk/elderflower.shtml](http://www.visitwinchester.co.uk/elderflower.shtml)  
[www.visitwinchester.co.uk/chocolatecraft.shtml](http://www.visitwinchester.co.uk/chocolatecraft.shtml)  
[www.visitwinchester.co.uk/watercressworkshops.shtml](http://www.visitwinchester.co.uk/watercressworkshops.shtml)  
[www.visitwinchester.co.uk/sloegin.shtml](http://www.visitwinchester.co.uk/sloegin.shtml)



## Hampshire's Distinctive Country Inns

A stay at a distinctive country inn provides the perfect base for a number of activities. Located in the heart of the countryside, whatever type of activity you are looking for there are miles of beautiful footpaths and cycle tracks. For further information: [www.distinctivecountryinns.co.uk](http://www.distinctivecountryinns.co.uk)

## Green Tourism Business Scheme

Businesses with a concern for the environment are recognised by the Green Tourism Business Scheme. The following businesses efforts to operate in an environmentally friendly and sustainable way have been graded Bronze, Silver and Gold against set criteria.



**Scotland Farm Countryside Bed and Breakfast**  
Hawley, Liss, GU 33 6NH  
Tel: 01730 827473 Fax: 01730 827155  
E-mail: [admin@scotlandfarm.com](mailto:admin@scotlandfarm.com)  
Web: [www.scotlandfarm.com](http://www.scotlandfarm.com)



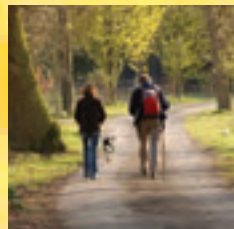
**Wetherdown Hostel**  
The Sustainability Centre, Droxford Road, East Meon, Petersfield, GU 32 1HR  
Tel: 01730 823166 Fax: 01730 823168  
E-mail: [hostel@earthworks-trust.com](mailto:hostel@earthworks-trust.com)  
Web: [www.earthworks-trust.com](http://www.earthworks-trust.com)



**Langrish House**  
(See overleaf)



**Stubbs Farm**  
South Hay, Kingsley, GU 35 9NR  
Tel/Fax: 01420 474906  
E-mail: [info@stubbsfarm.co.uk](mailto:info@stubbsfarm.co.uk)  
Web: [www.stubbsfarm.co.uk](http://www.stubbsfarm.co.uk)



## Escape to the Countryside

This superb guide presents an enticing variety of themed walking trails centred on the most picturesque of South East England villages and country towns.

To order your free copy of the "Escape into the Countryside" brochure call 023 8062 5541 or visit [www.visitsoutheastengland.com/countryside](http://www.visitsoutheastengland.com/countryside)