



Hampshire Biodiversity
Information Centre

Monitoring Change in Priority Habitats, Priority Species and Designated Areas

**For Local Development Framework
Annual Monitoring Reports**

2008/9

Produced by

Hampshire Biodiversity Information Centre

October 2009

Sharing information about Hampshire's wildlife

The Hampshire Biodiversity Information Centre Partnership includes local authorities, government agencies, wildlife charities and biological recording groups.

Biodiversity Monitoring in Hampshire

Background

Local Planning Authorities are expected to monitor changes in biodiversity as a key component of their Local Development Framework (LDF), as set out in **Core output Indicator E2** (updated 2/2008 and previously known as No. 8)

Purpose: To show losses or additions to biodiversity habitat.

Definition Areas of biodiversity importance should be recognised in the Development Plan (RSS and DPD) for their intrinsic environmental value including sites of international, national, regional, sub-regional or local significance. This should include Sites of Special Scientific Interest, Sites of Importance for Nature Conservation and other local sites.

Information

This indicator can be bundled with other contextual indicators including those on species or quality to illustrate impacts of new development on sites overtime. This could include National Indicator 197 on improved local biodiversity – proportion of local sites where positive conservation management has been or is being implemented.

Previously, local planning authorities were also asked to monitor changes in species as well as habitats and areas designated for their intrinsic environmental value (including sites of international, national, regional or sub-regional significance). This report will continue to monitor changes in habitats, designated sites and species, particularly as much BAP habitat & many BAP species lies outside the designated sites.

The Hampshire Biodiversity Information Centre (HBIC) is the centre of reference for comprehensive information relating to biodiversity in Hampshire, working in partnership with both data users and data providers for public benefit. HBIC is able to monitor changes in area of designated sites and habitats by district/borough/unitary through the information it gathers and maintains on a Geographic Information System (GIS). HBIC can also provide information on species change across Hampshire through the data it holds on MapMate & Recorder on behalf of its partner species recording groups and in consultation with them.

Tables

Page

1. Extent of BAP Priority habitats in Hampshire	5
2. Nature Conservation Designations	8
3. BAP Priority habitat areas within Designated Sites	9
4. Condition of SSSIs	10
5a. Changes to SINCS observed and recorded during 2008/9	11
5b. NI197 breakdown for 2008/9	12
6a. Changes in 50 BAP Priority Species 1998-2008 : Population Trends	15
6b. Changes in 50 BAP Priority Species 1998-2008 : Distribution	17

Sharing information about Hampshire's wildlife

The Hampshire Biodiversity Information Centre Partnership includes local authorities, government agencies, wildlife charities and biological recording groups.

Explanatory Notes

1. Mapping change due to development : Currently it is extremely difficult to identify changes in habitat extent or species status that have occurred solely due to the impact of development, planning agreements etc., particularly within a given year. A GIS layer of the boundaries of all completed planning permissions from the previous year would be needed, which would need to show the actual footprint of each development. Additional information would also be needed for each completed development detailing impact of development, mitigation measures, or restoration/ re-creation opportunities in order to predict a net loss or gain in biodiversity. This more detailed approach is currently being examined by Hampshire County Council in association with the Hampshire BAP Local Authorities Forum. Meanwhile the statistics provided in this report assist with the baseline reporting of current extent of BAP Priority habitats and species populations necessary to report on changes in future years. These statistics also service several Hampshire BAP target indicators.

2. Mapping change in habitat extent : The full extent of priority habitats in Hampshire is not yet fully known – and may never be fully known due to the dynamic state of our Countryside and the difficulties of obtaining access many areas. HBIC is working with its funding partners to improve information on Priority habitat extent and condition through the Hampshire Habitat Survey Programme and from other survey data that becomes available. This information is used by HBIC to maintain a GIS layer mapping the extent of broad and priority habitats in Hampshire. For the moment it is more likely that any future ‘gains’ in BAP habitat are due to additional priority habitat being discovered than having been re-created, or from a re-interpretation of survey material using a new classification system – see below

It is difficult to assign any ‘loss’ of a BAP Priority habitat to either development or agricultural improvement/ neglect unless it is within a SINC which has been recently surveyed, or is readily apparent from a recent aerial photograph. Any such changes are then logged and the reason given. An added difficulty is that HBIC, along with other biological records centres in the SE Region, have had to translate their habitat data into a new classification system called IHS (Integrated Habitat System), part-funded by Natural England. Unfortunately there is still much data to be ‘cleansed’ because the new system interprets some vegetation types differently to the old ‘Phase 1’ system. It is not a straightforward 1:1 relationship and the original survey data needs to be revisited for many habitat polygons. HBIC are now reporting on habitat extent using the new system and so there will continue to be some changes to the baseline which are solely due to the way the data is interpreted using the new system.

3. Revised UK List of Priority Habitats 2007 : In addition to future changes caused by IHS the Government has recently added a further 16 Priority habitats to the UK List. For Hampshire, this means including ‘Traditional Orchards’ and ‘Open mosaic habitats on previously developed land’, along with an expansion in scope and definition of ‘Hedgerows’, ‘Ponds’ and ‘Rivers’. The definitions have now been refined and but it will take some time before any data appears for the new Priority habitats relevant to Hampshire. More surveys are needed.

4. Mapping change in species populations : HBIC holds in excess of 2.5 million species records for Hampshire, a number that is increasing, particularly for large numbers of ‘casual sightings’ of species records provided by the species groups, as opposed to repeat surveys targeted at any particular species. Therefore, whilst it can be difficult to detect species trends at the County level, let alone at a district level a suite of 50 BAP species have been chosen for which there appears to be good data and for which there is wide geographic spread. See section 6. Again, there is also a revised UK BAP List of Priority Species; the number has increased from 577 to 1149 with 123 species from the old list now being excluded. The Hampshire BAP Priority List is currently being reviewed but it is unlikely to lead to any changes to the 50 chosen species in the short term, if only for continuity of reporting.

Sharing information about Hampshire's wildlife

The Hampshire Biodiversity Information Centre Partnership includes local authorities, government agencies, wildlife charities and biological recording groups.

5. Mapping change in site designations : Detailed changes in Sites of Importance for Nature Conservation extent & number are recorded and mapped each year as HBIC has responsibility for proposing, mapping and monitoring SINC's and for maintaining an up to date GIS layer of all conservation designations in Hampshire. However, it is important to note that many of the amendments and deletions will relate to events 'on the ground' that may have occurred many years before the sites were surveyed but were only recorded during this reporting period when recent survey data was evaluated. A separate spreadsheet chronicling every change to each SINC is available separately. For this year, a lot of the amendments are due simply to tidying up site boundaries on the GIS to improve accuracy when plotted on MasterMAP.

6. Assessment of habitat condition : The condition of priority habitats is currently known for only those habitats that fall within Sites of Special Scientific Interest (SSSIs) and for a random sample of SINC's that are surveyed in any one year. Natural England staff conduct condition assessments on SSSIs on a five year rolling programme with some assistance from HBIC surveys. Information on the SSSI condition assessment is available from Natural England for the reporting period and has, for this year been summarized at the precise District level.

HBIC is currently trialing condition assessment methodology for a number of BAP habitats and, along with it's normal Phase 2/NVC surveys, has used this information to contribute to reporting on the National Indicator 197 for 2008- 2009. See new Table 6

7. Source/date for habitat and designations data : is based on the HBIC GIS layers archived at the end of March 2008 and March 2009.

8. The New Forest : The New Forest District is now treated as two separate entities: the New Forest National Park Authority (which includes a small part of Test Valley and some of Wiltshire) and the remaining New Forest District.

Further explanatory notes and a brief summary of trends is given at the end of some of the tables.

1. Extent of BAP Priority habitats in Hampshire (as of 31st March 2009)

BAP Priority Habitat	Comments on Status	Area in Hants (ha)	% of combined total area ¹	BDBC	EBC	EHDC	FBC	GBC	HvBC	HDC	NFDC	NFNPA	PCC	RBC	SCC	TVBC	WCC
Arable Field Margins	Incomplete data. Figures only show 'notable species' SINC's on arable land where there is data - for rare arable plants or birds. Other areas may exist.	31	0.01			7				5	1					18	1
Lowland Calcareous Grassland	Comprehensive.	2,200	0.57	294	1	336	16		9	3	286		56			771	428
Lowland Heathland	Comprehensive. Some overlap with Lowland Dry Acid Grassland.	10,718	2.76	39	17	603		10		239	623	9,047		108	3	25	1
Lowland Dry Acid Grassland	Comprehensive. Some overlap with Lowland Heath.	3,989	1.03	21	2	182	6	27	47	211	48	3,306		64		62	12
Lowland Meadows	Comprehensive. Some overlap with Coastal and Floodplain Grazing Marsh and with Wood-Pasture and Parkland.	1,777	0.46	175	54	106	20	42	67	163	194	279	93	10	32	219	322
Purple Moor Grass and Rush Pastures	Comprehensive. Some overlap with Coastal and Floodplain Grazing Marsh.	333	0.09	29	21	15	3		5	52	18	70		4	2	65	45
Lowland Fen	Comprehensive.	1,079	0.28			15				7	5	1,051					
Reedbeds	Further work is needed to identify areas within SSSIs	113	0.03		2		1	7	1	1	11	38	12			39	
Coastal and Floodplain Grazing Marsh	Further work is needed to identify all qualifying grazing marsh from survey data. Some overlap with Lowland Meadows and with Purple Moor Grass and Rush Pastures.	857	0.22		23		30	4	124		253	394	9		1	18	1
Coastal Saltmarsh	Comprehensive.	1,728	0.44		38		51	58	577		171	582	241		7		2
Maritime Cliff and Slopes	Comprehensive.	45	0.01				5	1			38	1					

¹ Combined total area of Hampshire (to LWM) & NF National Park (388,467 ha)

Sharing information about Hampshire's wildlife

The Hampshire Biodiversity Information Centre Partnership includes local authorities, government agencies, wildlife charities and biological recording groups.

BAP Priority Habitat	Comments on Status	Area in Hants (ha)	% of combined total area ¹	BDBC	EBC	EHDC	FBC	GBC	HvBC	HDC	NFDC	NFNPA	PCC	RBC	SCC	TVBC	WCC
Intertidal Mudflats	Comprehensive. Does not include marinas but may include some sands & gravels.	3,618	0.93		127		237	79	1,140		388	607	919		114		6
Seagrass Beds	Incomplete data. Other areas exist that are yet to be identified from HBIC surveys and Hampshire Wildlife Trust Seagrass surveys.	82	0.02						64				18				
Saline Lagoons	Comprehensive.	58	0.01				2	1	19		3	28	4		1		
Sheltered Muddy Gravels	No comprehensive information yet available.	-	-														
Subtidal Sands & Gravels	No comprehensive information yet available.	-	-														
Coastal Vegetated Shingle	Comprehensive.	276	0.07		6		15	51	49		23	93	31		8		
Coastal Sand Dunes	Comprehensive.	72	0.02						65		2	5					
Lowland Mixed Deciduous Woodland	Further work is needed as currently all semi-natural deciduous woodland (both ancient and non-ancient) has been included yet not all of it has been surveyed for the qualifying NVC types. Includes some Lowland Beech & Yew Woodland yet to be separated out.	46,283	11.91	7,111	707	6,562	594	110	300	3,061	1,979	11,890	21	341	339	6,690	6,578
Lowland Beech and Yew Woodland	Further work is needed to distinguish from Lowland Mixed Deciduous Woodland and to identify areas within SSSIs.	-	-														
Wood-Pasture and Parkland	Further work is needed to classify the Wood-Pasture and Parkland within the New Forest SSSI (c4,960ha) and identify additional areas within historic parkland.	1,204 + c4,690	-	522	3	15			16	216	3	99 + c4,690	21		77	111	120
Wet Woodland	Further work is needed. Other areas exist that are yet to be surveyed for qualifying types.	1,949	0.50	422	189	218	58	15	75	124	53	302		7	54	176	254

Sharing information about Hampshire's wildlife

The Hampshire Biodiversity Information Centre Partnership includes local authorities, government agencies, wildlife charities and biological recording groups.

BAP Priority Habitat	Comments on Status	Area in Hants (ha)	% of combined total area ¹	BDBC	EBC	EHDC	FBC	GBC	HvBC	HDC	NFDC	NFNPA	PCC	RBC	SCC	TVBC	WCC
Traditional Orchards	No comprehensive information yet available.	-	-														
Ancient Hedgerows	No comprehensive information yet available.	-	-														
Ponds	No comprehensive information yet available.	-	-														
Rivers ²	Incomplete data. Approx. figures for Chalk Rivers only calculated from EA's River GIS layer	632	-	101	24	25	11			63	76	15			19	182	118

Explanatory Notes:

Changes in the total extent of BAP Priority habitat over the past year are largely due to ongoing adjustments to review/revise mismatched categories when the 'Phase 1' habitat layer was translated into the new "Integrated Habitat System" (IHS). For example; some of the total BAP Priority habitat areas have been reduced because they previously included habitat polygons identified solely from aerial photographs. This is not allowed in IHS and so the habitat polygon is re-assigned to the 'broad' habitat category further up the hierarchy until such time as a field survey is carried out. **The most notable reduction in BAP Priority habitat is for Coastal and Floodplain Grazing Marsh.** Previously the figure was calculated on the basis of all grassland habitats within the Environment Agency's fluvial Floodplain GIS layer. The definition has since been tightened and hence only habitat polygons where the source data contains the qualifying NVC types has been included thereby reducing the amount from around 8,065ha to 857ha. The 857 ha comprises mostly coastal grazing marsh where there is good survey data. It is highly likely that the figure will return to something like the previous level once further survey analysis and desktop studies have been carried out.

The Lowland Heathland category will be undergoing a review over the coming year as part of an update to Natural England's national heathland inventory along with the wetland habitats incorporating Lowland Fen, Reedbeds and Coastal and Floodplain Grazing Marsh which need a similar review to review qualifying NVC types. The Lowland Mixed Deciduous Woodland category also needs an internal review as currently all semi-natural deciduous woodland has been included but not all of it has yet been surveyed for the qualifying NVC types. The classification of the Wood-Pasture & Parkland habitat and the distinguishing of Lowland Beech and Yew Woodland from the Lowland Mixed Deciduous Woodland category require a similar review.

Also note that the Lowland Fen and Reedbed BAP habitats and the Intertidal Mudflats and Seagrass Beds BAP habitats types are now shown separately.

² For the Test, Itchen, Avon, Meon, Wey, Whitewater, Loddon, Lyde, & Hart

Sharing information about Hampshire's wildlife

The Hampshire Biodiversity Information Centre Partnership includes local authorities, government agencies, wildlife charities and biological recording groups.

2. Nature Conservation Designations (as at 31st March 2009)

Designation	Area (ha) in Hants	% of combined total area ³	BDBC (ha)	EBC (ha)	EHDC (ha)	FBC (ha)	GBC (ha)	HvBD (ha)	HDC (ha)	NFDC (ha)	NFNPA (ha)	PCC (ha)	RBC (ha)	SCC (ha)	TVBC (ha)	WCC (ha)
LNR	1,858	0.48	242	35	279	361	40	172	68	2	411	118	2	13	63	52
NNR	2,173	0.56	23		358	120			31	339	1,199					103
RAMSAR	36,993	9.52		184		540	165	2,430		1,629	30,152	1,707		111	52	23
SAC	37,093	9.55		296	1,539	195	4	2,270		614	30,643	542		20	788	182
SPA	41,792	10.76		184	1,752	527	161	2,430	2,099	1,626	30,122	1,707	451	111	599	23
SSSI	50,556	13.01	806	427	2,705	563	265	2,677	2,696	2,571	32,190	1,787	471	216	1,869	1313
SINC	34,879	8.98	6,051	756	6,108	583	351	860	1,922	2,341	2,845	129	457	397	5,509	6,570

Summary:

The total area of the statutory designations have decreased by 67ha following an amendment to the borough boundary in Havant which excluded approx. 30ha of SAC, SPA & SSSI south of Sandy Point that is below the low water mark. Figures for SACs have also been adjusted for Eastleigh & Fareham Boroughs to reflect correct borough boundaries by excluding areas of Solent Maritime SAC below low water mark.

Changes to the New Forest District & National Park figures are due to the removal of the Hinton Park and Fawley Power Station areas from the National Park back to the District plus a number of other minor amendments to the boundary in 2008.

The only actual change in statutory designations reported during 2008/9 was the addition of 8.2ha following the designation of Holcombe Mead LNR in Eastleigh (actually designated in Feb 2008).

All the remaining amendments to SINC areas in 2008/9 are due to many minor amendments to tidy up and improve the accuracy of SINC boundaries to more closely reflect the designated sites, plus improvements to the accuracy of area calculations. They do not reflect 'real' amendments/changes to areas of qualifying interest.

³ Combined total area of Hampshire (to LWM) & NF National Park (388,467 ha)

Sharing information about Hampshire's wildlife

The Hampshire Biodiversity Information Centre Partnership includes local authorities, government agencies, wildlife charities and biological recording groups.

3. BAP Priority habitat areas within Designated Sites (as at 31st March 2009)

Designated Sites	Extent of BAP Priority Habitat within designated sites (ha)	% of combined total area of BAP Habitat ⁴	BDBC (ha)	EBC (ha)	EHDC (ha)	FBC (ha)	GBC (ha)	HvBC (ha)	HDC (ha)	NFDC (ha)	NFNPA (ha)	PCC (ha)	RBC (ha)	SCC (ha)	TVBC (ha)	WCC (ha)
LNR/NNR/RAMSAR /SAC/SPA/SSSI	33,011	43.7	644	275	1,490	376	203	2,004	1,057	1,413	22,072	1,305	155	167	1,178	674
SINC	20,826	27.6	4,051	536	3,267	362	132	372	1,252	1,581	1,638	31	152	231	3,624	3,597
Total	53,837	71.2	4,695	811	4,757	738	335	2,376	2,309	2,994	23,710	1,336	307	398	4,802	4,271

Summary : With the decrease in recognised BAP Priority habitat (from 82,856ha in 2007/8 to 75,577ha in 2008/9) there has been a corresponding decrease in the amount of BAP Priority habitat within statutory designated sites and SINC. However, the % total of BAP habitat that is designated has increased - from 41.9% to 43.7% for statutory sites and from 25.3% to 27.6% for SINC. The total % coverage by designated sites has increased from 67.3% to 71.2% which is largely because the evidence for known BAP Habitats (which must now be demonstrated) within designated sites is of higher quality than the evidence of BAP Habitats in other areas that have less comprehensive survey data.

Note : The decrease in BAP Priority habitat is as a result of the floodplain grazing marsh being taken out until more definitive information is gathered on qualifying NVC types or evidence of grazing and water management. The figure is then likely to increase back to near it's former level.

⁴ Combined total area of BAP Habitat in Hampshire (to LWM) & NF National Park (75,577 ha)

Sharing information about Hampshire's wildlife

The Hampshire Biodiversity Information Centre Partnership includes local authorities, government agencies, wildlife charities and biological recording groups.

4. Condition of Sites of Special Scientific Interest (SSSIs) as at 31st March 2009

Data has been provided by Natural England for the 2008/9 period. The total amount of SSSI in each District differs from NE figures because NE do not always assign a portion of an SSSI to a correct District where the majority of that SSSI occurs within another District, HBIC are able to clip the SSSI management units directly to the District boundaries.

District name	FAVOURABLE		UNFAVOURABLE RECOVERING		UNFAVOURABLE NO CHANGE		UNFAVOURABLE DECLINING		PART DESTROYED		DESTROYED		NOT ASSESSED		Grand Total
	Area (ha)	Area (%)	Area (ha)	Area (%)	Area (ha)	Area (%)	Area (ha)	Area (%)	Area (ha)	Area (%)	Area (ha)	Area (%)	Area (ha)	Area (%)	Area (ha)
Basingstoke & Deane	184.23	22.8%	556.72	69.0%	39.86	4.9%	25.38	3.1%	0.18	0.0%		0.0%		0.00%	806.37
East Hampshire	925.98	34.2%	1640.95	60.7%	5.92	0.2%	126.34	4.7%	5.83	0.2%		0.0%		0.00%	2,705.03
Eastleigh	200.50	47.0%	136.36	32.0%	82.01	19.2%	4.64	1.1%		0.0%	2.95	0.7%		0.00%	426.45
Fareham	442.69	78.6%		0.0%	110.70	19.7%	9.70	1.7%		0.0%		0.0%		0.00%	563.09
Gosport	78.97	29.8%	59.10	22.3%	76.18	28.7%	46.38	17.5%		0.0%	4.46	1.7%		0.00%	265.10
Hart	323.18	12.0%	1791.56	66.5%	76.84	2.9%	500.34	18.6%	3.63	0.1%		0.0%		0.00%	2,695.55
Havant	114.45	4.3%	252.10	9.4%	854.40	31.9%	1456.06	54.4%		0.0%		0.0%		0.00%	2,677.01¹
New Forest District	524.47	20.4%	1024.83	39.9%	395.41	15.4%	623.39	24.2%		0.0%		0.0%	3.035	0.12%	2,571.13²
New Forest NP	10,682.17	33.6%	19296.83	60.7%	290.04	0.9%	1505.20	4.7%		0.0%	2.46	0.0%	1.174	0.00%	31,777.87²
Portsmouth	467.66	26.2%	69.14	3.9%	186.35	10.4%	1062.00	59.4%		0.0%	1.79	0.1%		0.00%	1,786.94
Rushmoor	36.44	7.7%	428.91	91.0%	0.00	0.0%	6.04	1.3%	0.03	0.0%		0.0%		0.00%	471.42
Southampton	116.91	54.1%	67.60	31.3%	4.84	2.2%	26.58	12.3%		0.0%		0.0%		0.00%	215.94
Test Valley	529.45	28.3%	1030.40	55.1%	212.80	11.4%	95.88	5.1%		0.0%		0.0%		0.00%	18,68.54³
Winchester	477.11	36.3%	497.49	37.9%	199.29	15.2%	123.37	9.4%		0.0%	15.38	1.2%		0.00%	1,312.64
Grand Total	15,104.21	30.1%	26,851.99	53.6%	2,534.66	5.1%	5,611.30	11.2%	9.67	0.0%	27.04	0.1%	4.21	0.01%	50,143.08

Summary :

The total area of assessed SSSI in Hampshire has increased by 130ha during the reporting period. This is because the assessed SSSI area within the New Forest National Park boundary that lies in Wiltshire County (around 60ha) has now been included, hence the increase in SSSI coverage for the NFNPA⁽²⁾. Test Valley has also seen an increase in its SSSI assessed coverage of around 67ha from the overlapping of some compartments within Wiltshire that cross the TVBC boundary⁽³⁾. The SSSI assessed coverage for the New Forest District has risen due to the change in the NFNPA boundary⁽²⁾, and Havant Borough has seen a reduction in its SSSI assessed coverage due to a boundary change this year⁽¹⁾ – see Table 2. The SSSI total coverage for the remaining districts remains about the same.

The total amount of SSSI in Hampshire in favourable or unfavourable recovering condition has increased to 83.7% of the total, from 79.9% in 2007/9. This is due largely to a decrease in the total area which was unfavourable declining by around 1,500ha. Nearly 3ha of SSSI has been destroyed in Eastleigh.

Sharing information about Hampshire's wildlife

The Hampshire Biodiversity Information Centre Partnership includes local authorities, government agencies, wildlife charities and biological recording groups.

5a. Changes to SINCS observed and recorded during 2008/9

Data extracted from HBIC SINC layer between 31.03.08 and 31.03.09. Changes to the previous year's figures are shown in brackets for Hampshire as a whole.

District name	SINCS (31.03.2008)		SINCS (31.03.2009)		NEW SINCS		AMENDED SINCS		DELETED SINCS		NET CHANGE		
	Number	Area (ha)	Number	Area (ha)	Number	Area (ha)	Number	Area (ha)	Number	Area (ha)	Number	Area (ha)	% change in area
Hampshire	3810	34888.16	3810	34877.73	0 (63)	0.00 (226.97)	0 (73)	-10.43 (-5.35)	0 (6)	0.00 (-8.80)	0 (57)	-10.43 (212.82)	-0.03 (0.58)
Basingstoke and Deane	755	6059.08	755	6050.77	0	0.00	0	-8.31	0	0.00	0	-8.31	-0.14
East Hampshire	554	6111.39	555	6107.92	0	0.00	0	-3.47	0	0.00	0	-3.47	-0.06
Eastleigh	134	757.38	134	756.18	0	0.00	0	-1.2	0	0.00	0	-1.2	-0.16
Fareham	92	583.13	92	583.04	0	0.00	0	-0.09	0	0.00	0	-0.09	-0.02
Gosport	29	351.03	29	350.81	0	0.00	0	-0.22	0	0.00	0	-0.22	-0.06
Hart	250	1918.70	250	1921.86	0	0.00	0	3.16	0	0.00	0	3.16	0.16
Havant	133	860.27	133	859.79	0	0.00	0	-0.48	0	0.00	0	-0.48	-0.06
New Forest District	198	2292.58	198	2341.34	0	0.00	0	48.76	0	0.00	0	48.76	2.13
New Forest NPA	373	2898.57	373	2845.32	0	0.00	0	-53.25	0	0.00	0	-53.25	-1.84
Portsmouth	13	129.23	13	128.58	0	0.00	0	-0.65	0	0.00	0	-0.65	-0.50
Rushmoor	36	456.71	36	457.44	0	0.00	0	0.73	0	0.00	0	0.73	0.16
Southampton	41	395.67	41	395.58	0	0.00	0	-0.09	0	0.00	0	-0.09	-0.02
Test Valley	553	5507.07	553	5508.82	0	0.00	0	1.75	0	0.00	0	1.75	0.03
Winchester	649	6567.35	648	6570.28	0	0.00	0	2.93	0	0.00	0	2.93	0.04

Summary

1. There have been no new, amended or deleted SINCS approved during 2008-9 as those that were identified during the 2008-9 reporting year were not approved by the SINCS Panel until June/July 2009. They will therefore appear in the 2009-10 Report.
2. The apparent 'gain' of 1 SINC in East Hampshire is due to a correction of last year's figures for 2007/8 where 3 SINCS were reported as deleted instead of 2.
3. The apparent 'loss' of 1 SINC in Winchester is because the addition of 'Arle Mill Water Meadows & Cressbeds' reported in late 2007/8 was carried over into 2008/9 and reviewed by the SINCS Panel in July 2009 and hence was not actually added in 2007/8.
4. SINC gains and losses in the New Forest District and National Park were due to the removal of the Hinton Park and Fawley Power Station areas from the National Park back to the District, plus a number of other minor amendments to the boundary in 2008.
5. All the remaining amendments to SINC areas in 2008/9 are due to many minor amendments to tidy up and improve the accuracy of SINC boundaries to more closely reflect the designated sites. They do not reflect 'real' amendments/changes to areas of qualifying interest and so have not been 'counted'

Sharing information about Hampshire's wildlife

The Hampshire Biodiversity Information Centre Partnership includes local authorities, government agencies, wildlife charities and biological recording groups.

5b. NI197 breakdown for 2008/9

Breakdown of SINC by Districts showing the number and percentage of sites in positive, negative and unknown management for the reporting period April 2004 – March 2009

District	Positive	% Positive	Negative	% Negative	Unknown	% Unknown	Total
Basingstoke and Deane	323	43%	28	4%	404	54%	755
Eastleigh	54	40%	17	13%	63	47%	134
East Hampshire	206	37%	30	5%	319	58%	555
Fareham	47	51%	17	18%	28	30%	92
Gosport	16	55%	4	14%	9	31%	29
Hart	76	30%	23	9%	151	60%	250
Havant	56	42%	13	10%	63	48%	132
New Forest District	87	44%	12	6%	99	50%	198
New Forest NPA	175	47%	14	4%	184	49%	373
Rushmoor	11	31%	7	19%	18	50%	36
Test Valley	264	48%	22	4%	267	48%	553
Winchester	281	43%	28	4%	340	52%	649
Hampshire Total	1,596	42%	215	6%	1,946	52%	3,757

Note: The 'Hampshire Total' excludes SINC in Southampton CC & Portsmouth CC as they report on NI917 separately though their Local Area Agreements

There are two discrepancies in the District totals between Table 5a & 5b; Havant 'lost' a SINC in the NI 197 table because a SINC recommended for deletion to the Panel was accidentally taken off the SINC GIS layer too early. East Hampshire 'gained' an extra SINC for NI 197 reporting (reported as 'unknown') – however, this was a mistake and the corrected figures are as above.

Sharing information about Hampshire's wildlife

The Hampshire Biodiversity Information Centre Partnership includes local authorities, government agencies, wildlife charities and biological recording groups.

6. Changes in BAP Priority Species 1998-2008

One of the *Key Objectives* (1f) of the Hampshire Biodiversity Action plan is to “Ensure appropriate action for priority species”. The *Headline Indicator* for this objective is “Status of Priority Species in Hampshire”. The Hampshire Biodiversity Information Centre (HBIC) has been tasked with compiling data on status/distribution trends for a representative sample of 50 Hampshire BAP priority species.

What HBIC cannot do is attribute change in status of any of the 50 species to that defined in PPS12 as originally requested; in terms of impact of completed development, management programmes and planning agreements, unless specific information comes to light on a case-by-case basis. Most change will be due to ongoing changes in agricultural practice, climate or cumulative impact of urbanisation, recreation etc.

Priority Species

The 50 BAP species cover a broad range of taxonomic groups and are representative of the various habitat types present in Hampshire, covering both rural and urban areas, and with relevance to all local authorities.

There are 493 priority species listed in the Hampshire Biodiversity Action Plan, but 69 of these are considered extinct, probably extinct or else vagrants. This leaves 424 species, including 150 that are also UK BAP Priority Species⁵. It is unrealistic to attempt to report on all of these, not least of which because there is insufficient knowledge on the status (and trends) of many of them, and some have such restricted distribution (just one or two sites) that their relevance to the reporting process is fairly limited. However, it is considered realistic to draw up a representative list of 50 species to gain an overall assessment of change in priority species status in a regular and consistent way.

Following consultation in June 2006 with various statutory agencies, local authorities and a number of species recording groups in Hampshire, an agreed list of 50 BAP priority species was drawn up and is presented in Table 6A below. It comprises 12 vascular plants, 12 birds, 12 butterflies/ moths, 4 mammals, an amphibian, a reptile, a beetle, a bee, a dragonfly, a crustacean, a fly, a fungus, a grasshopper and a snail. The bias towards vascular plants, birds and Lepidoptera reflects the large data-sets that already exist for these groups and the ongoing programme of data acquisition in place. Furthermore, it is well documented that these groups are sensitive indicators of environmental change, and are being used as such by Government and various organisations.

Criteria for Selection

The criteria for selection of individual species and for the broad composition of the complete list was derived with the following conditions in mind:

- 1) Individual species must be on the Hampshire BAP list of 493 species.
- 2) The list of 50 species should be representative of a wide range of taxonomic groups.
- 3) The species list should be representative of UK BAP priority habitats in Hampshire.
- 4) Species chosen should have a reasonable distribution (i.e. not just 1-2 sites)
- 5) A significant proportion of species chosen should be found in each District.
- 6) Species chosen should be sensitive to change (+ve/-ve, planning, management, climatic, or other environmental drivers).
- 7) Species selected are primarily those for which good data exists and can be obtained either annually, or through periodic (e.g. 3 year/ 5 year) survey programme, OR species for which a programme could be initiated to obtain data on a regular basis.
- 8) Where possible a good number of the selected species should be flagship species with wide public interest.

⁵ Refers to the original UK Priority List and not the new list approved in 2007. It is likely that the 50 selected species will remain the same in the near future to ensure continuity

Status of Hampshire BAP Priority Species

For consistency, the status categories for each species used for annual reporting matches those already in use elsewhere, particularly by Defra for national reporting:

- Increasing;
- Stable;
- Declining (slowing);
- Declining (continuing/accelerating)
- Decline (possibly stabilising? At low level?)
- Fluctuating/ no clear trend;
- Lost (pre-BAP publication);
- Lost (since BAP publication)
- Unknown/insufficient data

From this the percentage of species in each of the categories is calculated – see Table 6A and pie charts shown on Page 16.

The relevance of annual reporting on changing status of a species may seem questionable, since all species have annual fluctuations linked with the weather, population cycles and other factors. When considering annual reporting it is important to appreciate that although the reporting will be annually, the evaluation of change would be over a longer time period. A 5-10 year period would seem to be more useful, so that in practice the trend of a given species over the 5-10 year period up to the given year would be reported for that year. In cases where major surveys for a particular species are repeated in a comprehensive manner at say 5-year intervals rather than every year, the annually reported trend would be that based on the most recent complete survey, and kept at this trend in all subsequent years until the next comprehensive survey.

In 2006, through a process of consultation with the various species recording groups in Hampshire, the Hampshire Biodiversity Information Centre (HBIC) compiled a baseline set of statistics for change in status (1995-2005) for the 50 BAP species shown in Table 6A (fifth column). This was included in the annual reporting document published in November 2006.

Having established a baseline it is now possible to assess change in status annually. For the year to 31 March 2009, the change in status of the 50 BAP priority species is reported for the period 1998-2008. The individuals contributing responses on behalf of particular recording groups are listed below, and the results are summarised in Table 6A (final column).

The following contributors are gratefully acknowledged for their assessment of the 50 BAP Species :

Birds : Glynne Evans, John Eyre & John Clarke, Hampshire Ornithological Society
Brown-banded carder bee : Lizzy Peat, BWARS
Butterflies & Moths : Andy Barker, Butterfly Conservation
Desmoulin's whorl snail : Rev. Graham Long, British Conchological Society
Dormouse, Water Vole & Brown hare : Debbie King, Hampshire Mammal Group
Flowering Plants : Martin Rand, BSBI
Great crested newt & Smooth snake : John Poland HARG
Hornet robber fly and Rufous grasshopper : Lizzy Peat
Eelgrass : Jolyon Chesworth, Hampshire & Isle of Wight Wildlife Trust
Lagoon sand shrimp : very little recent data available
Nail fungus : Stuart Skeates, Hampshire Fungus Recording Group & John Poland
Serotine bat : Hampshire Bat Group Records & HBIC Records
Southern damselfly : British Dragonfly Society/HBIC Records
Stag beetle : HBIC & PTES records

(Trends given in brackets in Table 6A indicate assessment by HBIC):

Sharing information about Hampshire's wildlife

The Hampshire Biodiversity Information Centre Partnership includes local authorities, government agencies, wildlife charities and biological recording groups.

TABLE 6A. POPULATION TRENDS OF HAMPSHIRE BAP SPECIES (n = 50) FOR ANNUAL REPORTING

Scientific name	Common name	Group	HBAP (Vol.2) 2000	Trend 1995-2005 assessed August 2006	Trend 1996-2006 assessed June 2007	Trend 1997-2007 assessed Oct. 2008	Trend 1998- 2008 Assessed Oct.2009
<i>Triturus cristatus</i>	great crested newt	Amphibians	Decline	Decline	Decline	Decline	Decline**
<i>Bombus humilis</i>	brown-band. carder bee	Bees	Decline	Unknown	Unknown	Increasing	Increasing
<i>Lucanus cervus</i>	stag beetle	Beetles	Decline	Stable	Stable	Stable	[Stable]
<i>Alauda arvensis</i>	skylark	Birds	Decline	Decline*	Decline*	Decline*	Decline*
<i>Branta b. bernicla</i>	dark-bellied brent goose	Birds	Stable	Decline*	Decline*	Decline*	Decline*
<i>Caprimulgus europ.</i>	nightjar	Birds	Stable	Increase	Increase	Stable	Stable
<i>Lullula arborea</i>	woodlark	Birds	Increasing	Increase	Increase	Increase	Increase
<i>Luscinia megarhyn.</i>	nightingale	Birds	Decline	Decline ?	Decline**	Decline**	Decline*
<i>Milaria calandra</i>	corn bunting	Birds	Rapid Decline	Decline**	Decline**	Decline**	Decline?
<i>Perdix perdix</i>	grey partridge	Birds	Rapid Decline	Decline**	Decline?	Decline**	Decline**
<i>Pyrhula pyrrhula</i>	bullfinch	Birds	Decline	Stable	Stable	Decline?	Decline*
<i>Streptopelia turtur</i>	turtle dove	Birds	Rapid Decline	Decline**	Decline?	Decline**	Decline?
<i>Sylvia undata</i>	Dartford warbler	Birds	Stable	Increase	Increase	Increase	Increase ¹
<i>Tringa totanus</i>	redshank	Birds	Rapid Decline	Decline**	Decline**	Decline?	Decline?
<i>Vanellus vanellus</i>	lapwing	Birds	Rapid Decline	Stable	Stable	Decline*	Decline*
<i>Argynnis paphia</i>	silver-washed fritillary	Butterflies	Stable	Stable	Stable	Stable	Stable
<i>Cupido minimus</i>	small blue	Butterflies	Rapid Decline	Decline*	Decline*	Decline*	Decline*
<i>Hamearis lucina</i>	Duke of Burgundy	Butterflies	Decline	Decline**	Decline**	Decline**	Decline**
<i>Hesperia comma</i>	silver-spotted skipper	Butterflies	Stable	Increase	Increase	Increase	Fluctuating
<i>Lysandra coridon</i>	chalkhill blue	Butterflies	Decline	Fluctuating	Fluctuating	Fluctuating	Fluctuating
<i>Plebejus argus</i>	silver-studded blue	Butterflies	Decline	Stable	Stable	Stable	Stable
<i>Gammarus insensibilis</i>	lagoon sand shrimp	Crustaceans	Decline	Unknown	Unknown	[Decline?]	[Decline?]
<i>Coenagrion mercuriale</i>	southern damselfly	Dragonflies	Stable	Stable	Stable	[Stable]	[Stable]
<i>Asilus crabroniformis</i>	hornet robberfly	Flies	Decline	Stable	Stable	[Stable]	Stable
<i>Carex divisa</i>	divided sedge	Flw Plants	Stable	Stable	Stable	Stable	Stable
<i>Chamaemelum nobile</i>	chamomile	Flw Plants	Decline	Stable	Stable	Stable	Stable
<i>Epipactis phyllanthes</i>	green flow. helleborine	Flw Plants	Decline	Stable	Stable	Decline	Decline?
<i>Gentiana pneumon.</i>	marsh gentian	Flw Plants	Decline	Stable	Stable	Stable	Fluctuating
<i>Juniperus communis</i>	juniper	Flw Plants	Decline	Decline*	Decline*	Decline*	Decline*

¹ Dartford Warblers have since crashed in numbers by as much as 90% in north-east Hampshire. Limited information from the New Forest and coastal sites suggests only a slight reduction, if any

Sharing information about Hampshire's wildlife

The Hampshire Biodiversity Information Centre Partnership includes local authorities, government agencies, wildlife charities and biological recording groups.

Scientific name	Common name	Group	HBAP (Vol.2) 2000	Trend 1995-2005 assessed August 2006	Trend 1996-2006 assessed June 2007	Trend 1997-2007 assessed Oct. 2008	Trend 1998- 2008 Assessed Oct.2009
<i>Lithospermum arvense</i>	corn gromwell	Flw Plants	Rapid Decline	Decline*	Decline*	Decline*	Decline*
<i>Orchis morio</i>	green-winged orchid	Flw Plants	Rapid Decline	Decline*	Decline*	Decline*	Decline*
<i>Pulicaria vulgaris</i>	small fleabane	Flw Plants	Stable	Stable	Stable	Stable	Fluctuating
<i>Pulmonaria longifolia</i>	narrow leaved lungwort	Flw Plants	Decline	Stable	Stable	Decline	Decline
<i>Oenanthe fluviatilis</i>	river water-dropwort	Flw Plants	Rapid Decline	Decline**	Decline**	Decline**	Decline
<i>Thesium humifusum</i>	bastard toadflax	Flw Plants	Decline	Stable	Stable	Stable	Stable
<i>Zostera marina</i>	eelgrass	Flw Plants	Decline	Unknown	Unknown	Decline?	Decline?
<i>Poronia punctata</i>	nail fungus	Fungi	Stable	Stable	Stable	Stable	Stable
<i>Gomphocerippus rufus</i>	rufous grasshopper	Grasshopper	Stable	Unknown	Unknown	[Unknown]	[Unknown]
<i>Arvicola terrestris</i>	water vole	Mammals	Rapid Decline	Stable	Stable	Stable	Stable
<i>Eptesicus serotinus</i>	Serotine bat	Mammals	Stable	Decline*	Decline**	Decline?	[Decline?]
<i>Lepus europaeus</i>	brown hare	Mammals	Decline	Stable	Stable	Stable	Stable
<i>Muscardinus avellan.</i>	dormouse	Mammals	Decline	Stable	Stable	Decline*	Stable
<i>Vertigo moulinsiana</i>	Desmoulin's whorl snail	Molluscs	Stable?	Unknown	Stable	Stable	Stable
<i>Apoda limacodes</i>	festoon	Moths	Decline	Stable	Increase	Increase	[Increasing]
<i>Catocala promissa</i>	light crimson underwing	Moths	Stable	Stable	Stable	Stable	[Stable]
<i>Hemaris fuciformis</i>	broad-bord. bee hawk	Moths	Decline	Stable	Stable	Stable	[Stable]
<i>Hypena rostralis</i>	buttoned snout	Moths	Decline	Increase	Increase	Increase	[Stable]
<i>Minoa murinata</i>	drab looper	Moths	Decline	Stable	Stable	Stable	[Stable]
<i>Shargacucullia lychnitis</i>	striped lychnis	Moths	Stable	Stable	Stable	Stable	[Stable]
<i>Coronella austriaca</i>	smooth snake	Reptiles	Decline	Stable	Stable	Stable	Stable

Status categories

- Increasing
- Stable
- **Decline*** = Decline - slowing
- **Decline**** = Declining - continuing/accelerating
- **Decline?** = Decline - possibly stabilising (At low level?)
- Fluctuating = no clear trend
- Lost (pre-BAP publication)
- Lost (since BAP publication)
- Unknown/insufficient data

Sharing information about Hampshire's wildlife

The Hampshire Biodiversity Information Centre Partnership includes local authorities, government agencies, wildlife charities and biological recording groups.

TABLE 6B. DISTRIBUTION OF HAMPSHIRE BAP SPECIES (n=50) FOR ANNUAL REPORTING

Note: '✓' means the particular species occurs¹ in the District (post-1998), deduced from records held by HBIC and those received from the species groups. Where HBIC doesn't hold data a qualitative assessment has been made.

Scientific name	Common name	Group	B	EH	E	F	G	Ht	Hv	ND	NP	P	R	S	T	W
<i>Triturus cristatus</i>	great crested newt	Amphib	✓	✓	✓	✓	✓	✓	✓	✓	✓			✓	✓	✓
<i>Bombus humilis</i>	brown-band.carder bee	Bees		✓		✓			✓	✓	✓	✓			✓	
<i>Lucanus cervus</i>	stag beetle	Beetles	✓	✓	✓	✓	✓	✓	✓	✓	✓	✓	✓	✓	✓	✓
<i>Alauda arvensis</i>	skylark	Birds	✓	✓	✓	✓	✓	✓	✓	✓	✓	✓	✓	✓	✓	✓
<i>Branta bernicla bernicla</i>	dark-bellied brent goose	Birds			✓	✓	✓		✓	✓	✓	✓		✓	✓	
<i>Caprimulgus europ.</i>	nightjar	Birds	✓	✓		✓		✓	✓	✓	✓		✓		✓	✓
<i>Lullula arborea</i>	woodlark	Birds	✓	✓	✓	✓	✓	✓	✓	✓	✓		✓	✓	✓	✓
<i>Luscinia megarhynchos</i>	nightingale	Birds	✓	✓	✓	✓		✓	✓	✓	✓	✓		✓	✓	✓
<i>Emberizac alandra</i>	corn bunting	Birds	✓	✓				✓	✓	✓					✓	✓
<i>Perdix perdix</i>	grey partridge	Birds	✓	✓				✓	✓	✓	✓				✓	✓
<i>Pyrrhula pyrrhula</i>	bullfinch	Birds	✓	✓	✓	✓	✓	✓	✓	✓	✓	✓	✓	✓	✓	✓
<i>Streptopelia turtur</i>	turtle dove	Birds	✓	✓	✓	✓		✓	✓	✓	✓	✓		✓	✓	✓
<i>Sylvia undata</i>	Dartford warbler	Birds	✓	✓	✓	✓	✓	✓	✓	✓	✓	✓	✓	✓		
<i>Tringa totanus</i>	redshank	Birds	✓	✓	✓	✓	✓	✓	✓	✓	✓	✓		✓	✓	✓
<i>Vanellus vanellus</i>	lapwing	Birds	✓	✓	✓	✓	✓	✓	✓	✓	✓	✓	✓	✓	✓	✓
<i>Argynnis paphia</i>	silver-washed fritillary	Butterflies	✓	✓	✓	✓	✓	✓	✓	✓	✓	✓	✓	✓	✓	✓
<i>Cupido minimus</i>	small blue	Butterflies	✓	✓		✓			✓	✓	✓	✓			✓	✓
<i>Hamearis lucina</i>	Duke of Burgundy	Butterflies	✓	✓						✓	✓				✓	✓
<i>Hesperia comma</i>	silver-spotted skipper	Butterflies		✓						✓		✓			✓	✓
<i>Lysandra coridon</i>	chalkhill blue	Butterflies	✓	✓		✓	✓	✓		✓		✓			✓	✓
<i>Plebejus argus</i>	silver-studded blue	Butterflies	✓	✓	✓			✓		✓	✓		✓			
<i>Gammarus insensibilis</i>	lagoon sand shrimp	Crustacea					✓			✓	✓					
<i>Coenagrion mercuriale</i>	southern damselfly	Dragonfly			✓						✓			✓	✓	✓
<i>Asilus crabroniformis</i>	hornet robberfly	Flies				✓				✓	✓				✓	✓
<i>Carex divisa</i>	divided sedge	Flw Plants					✓		✓	✓	✓	✓				

¹ 'Occurs' means possible/confirmed breeding or regular sightings in the area. 'Anomalous' records are discounted where possible.

Sharing information about Hampshire's wildlife

The Hampshire Biodiversity Information Centre Partnership includes local authorities, government agencies, wildlife charities and biological recording groups.

Scientific name	Common name	Group	B	EH	E	F	G	Ht	Hv	ND	NP	P	R	S	T	W
<i>Chamaemelum nobile</i>	chamomile	Flw Plants	✓	✓		✓	✓	✓		✓	✓		✓			✓
<i>Epipactis phyllanthes</i>	green flow. helleborine	Flw Plants	✓	✓	✓			✓					✓		✓	✓
<i>Gentiana pneumon.</i>	marsh gentian	Flw Plants						✓			✓				✓	
<i>Juniperus communis</i>	juniper	Flw Plants	✓	✓						✓	✓	✓			✓	✓
<i>Lithospermum arvense</i>	corn gromwell	Flw Plants	✓												✓	✓
<i>Oenanthe fluviatilis</i>	river water-dropwort	Flw Plants			✓			✓			✓				✓	✓
<i>Orchis morio</i>	green-winged orchid	Flw Plants	✓	✓	✓	✓	✓	✓	✓	✓	✓	✓	✓	✓	✓	✓
<i>Pulicaria vulgaris</i>	small fleabane	Flw Plants	✓					✓		✓	✓					
<i>Pulmonaria longifolia</i>	narrow leaved lungwort	Flw Plants								✓	✓					
<i>Thesium humifusum</i>	bastard toadflax	Flw Plants	✓			✓				✓		✓			✓	✓
<i>Zostera marina</i>	eelgrass	Flw Plants				✓	✓		✓	✓	✓	✓				
<i>Poronia punctata</i>	nail fungus	Fungi									✓		✓			
<i>Gomphocerippus rufus</i>	rufous grasshopper	Grasshopper		✓				✓					✓			
<i>Arvicola terrestris</i>	water vole	Mammals	✓	✓	✓	✓	✓	✓	✓	✓	✓	✓	✓	✓	✓	✓
<i>Eptesicus serotinus</i>	Serotine bat	Mammals	✓	✓	✓	✓			✓	✓	✓			✓	✓	✓
<i>Lepus europaeus</i>	brown hare	Mammals	✓	✓		✓		✓		✓	✓		✓	✓	✓	✓
<i>Muscardinus avellan.</i>	dormouse	Mammals	✓	✓		✓		✓	✓	✓					✓	✓
<i>Vertigo moulinsiana</i>	Desmoulin's whorl snail	Molluscs	✓							✓	✓				✓	✓
<i>Apoda limacodes</i>	festoon	Moths	✓	✓	✓	✓		✓	✓	✓	✓		✓		✓	✓
<i>Catocala promissa</i>	light crimson underwing	Moths			✓					✓	✓				✓	
<i>Hemaris fuciformis</i>	broad-bord. bee hawk	Moths	✓	✓				✓		✓	✓		✓		✓	✓
<i>Hypena rostralis</i>	buttoned snout	Moths	✓	✓	✓	✓		✓	✓	✓	✓	✓	✓	✓	✓	✓
<i>Minoa murinata</i>	drab looper	Moths	✓												✓	✓
<i>Shargacucullia lychnitis</i>	striped lychnis	Moths	✓	✓					✓					✓	✓	✓
<i>Coronella austriaca</i>	smooth snake	Reptiles		✓						✓	✓					
		TOTAL	35	34	22	27	17	29	26	41	40	21	19	19	39	36

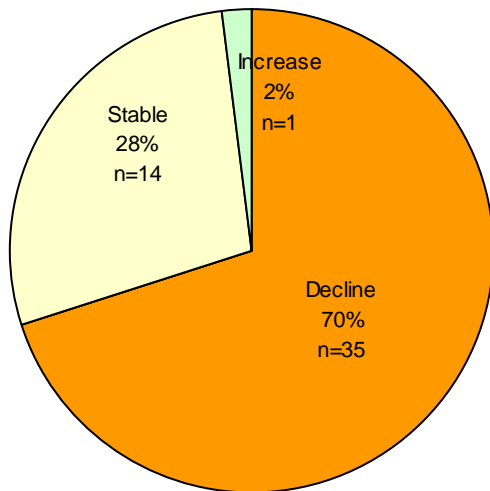
B = Basingstoke & Deane, EH = East Hampshire, E = Eastleigh, F = Fareham, G = Gosport, Ht = Hart, Hv = Havant, ND = New Forest District, NP = New Forest NPA, P = Portsmouth, R = Rushmoor, S = Southampton, T = Test Valley, W = Winchester

Sharing information about Hampshire's wildlife

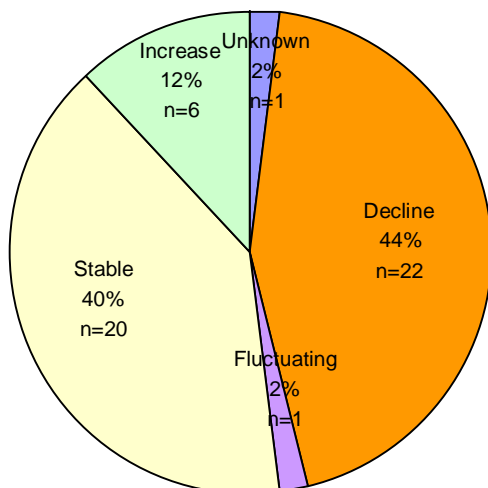
The Hampshire Biodiversity Information Centre Partnership includes local authorities, government agencies, wildlife charities and biological recording groups.

Summary of trends for Hampshire's representative 50 BAP priority species

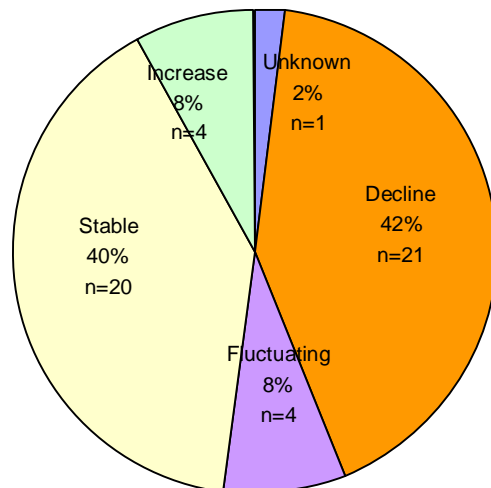
1) As assessed in Hampshire Biodiversity Action Plan (Vol.2) 2000



2) As assessed October 2008 for trends 1997-2007



3) As assessed October 2009 for trends 1998-2008



The last decade has seen rates of declines slowing for many of Hampshire's BAP priority species. There are, however, concerns that "Stable" for some species means stabilised at low levels i.e. the species had previously declined by a lot and has now levelled off at low levels, rather than stabilising at a high (long-term sustainable) level. Since reporting in 2008 the number of species showing a decline has barely changed and has only dropped from 44% to 42%, whilst several species have moved into the 'fluctuating' category whereby factors such as weather may be playing a part and there is uncertainty in the long term as to whether populations are actually increasing or decreasing. The number of the 50 BAP species present in each local authority area (Table 6B) has been revised slightly since last year, based on more complete data that HBIC now holds. Whilst it might appear that some species might be expanding or contracting in range more often than not it is about recorder effort over a period of time. All these changes have to be considered over a longer period of time.

Sharing information about Hampshire's wildlife

The Hampshire Biodiversity Information Centre Partnership includes local authorities, government agencies, wildlife charities and biological recording groups.