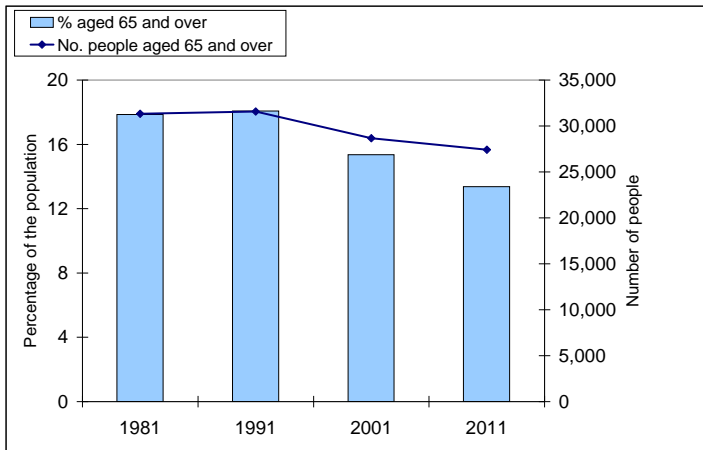


Trends in Ageing across Portsmouth 1981 to 2011

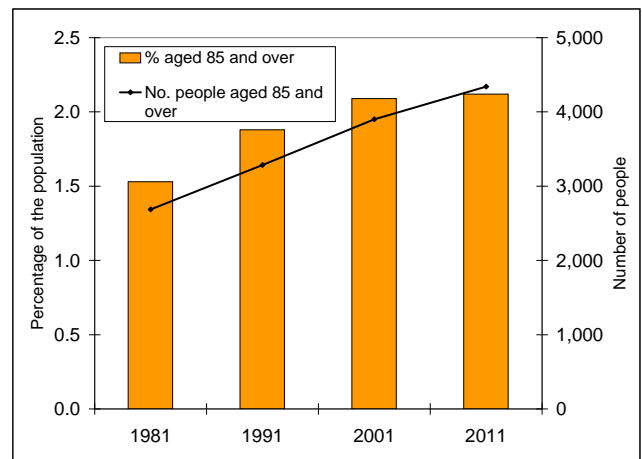
Population aged 65 and over



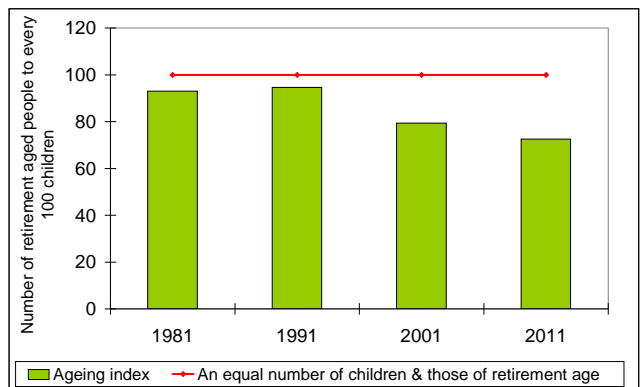
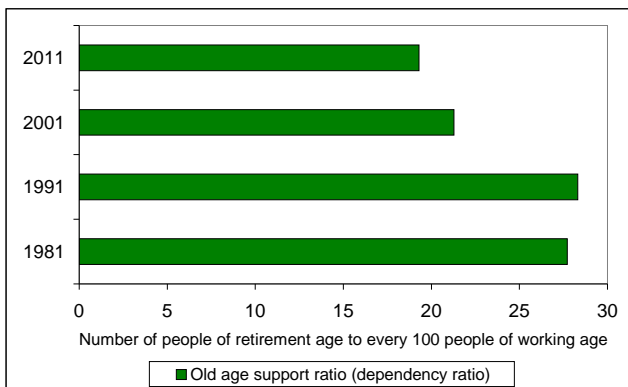
- The number of older people has declined overall. There was a small increase between 1981 and 1991 and then a consistent decline over the next two decades
- The number of people aged 65 and over declined by 2,650 between 1981 - 2001
- The number has declined by a further 1,260 between 2001 and 2011
- Over the entire period the number of people aged 65 and over has declined by almost 3,910
- The proportion of the population aged 65 and over has also declined from 17.9% in 1981 to 13.4% in 2011.

Population aged 85 and over

- The number of very old people has increased as each decade passed, as has the proportion of the population occupying the very oldest age groups
- The number of people aged 85 and over grew by 1,210 between 1981 - 2001
- The number has grown by a further 440 between 2001 and 2011
- Over the entire period the number of people aged 85 and over has reduced by approximately 3,900 individuals
- The proportion of the population aged 85 and over has also increased and currently stands at 2.2% of the population



Old Age Support Ratio and Ageing Index



- The old age support ratio and ageing index both show the change in the age structure of the population over time to a more youthful one
- The old age support ratio shows the decreasing number of retirement aged people in relation to the number of working age
- The ageing index reports the decreasing number of retirement aged people compared to children, by 2011 there are 73 retirement aged people for every 100 children - down from 93 in 1981

Table of figures

	1981	1991	2001	2011
Number of people aged 65 and over	31,320	31,570	28,670	27,410
% of people aged 65 and over	17.9	18.1	15.4	13.4
Number of people aged 85 and over	2,690	3,290	3,900	4,340
% of people aged 85 and over	1.5	1.9	2.1	2.1
Old age support ratio	28	28	21	19
Ageing index	93	95	79	73

Notes and Sources

Notes: The Old Age Support Ratio is the ratio of the working age population (Males and Females aged 16-64) to those of retirement age (Males and Females aged 65 and over). The Ageing index is the ratio of children (those age under 16) to the retirement aged population. Source: Census data from the Office for National Statistics and NOMIS.