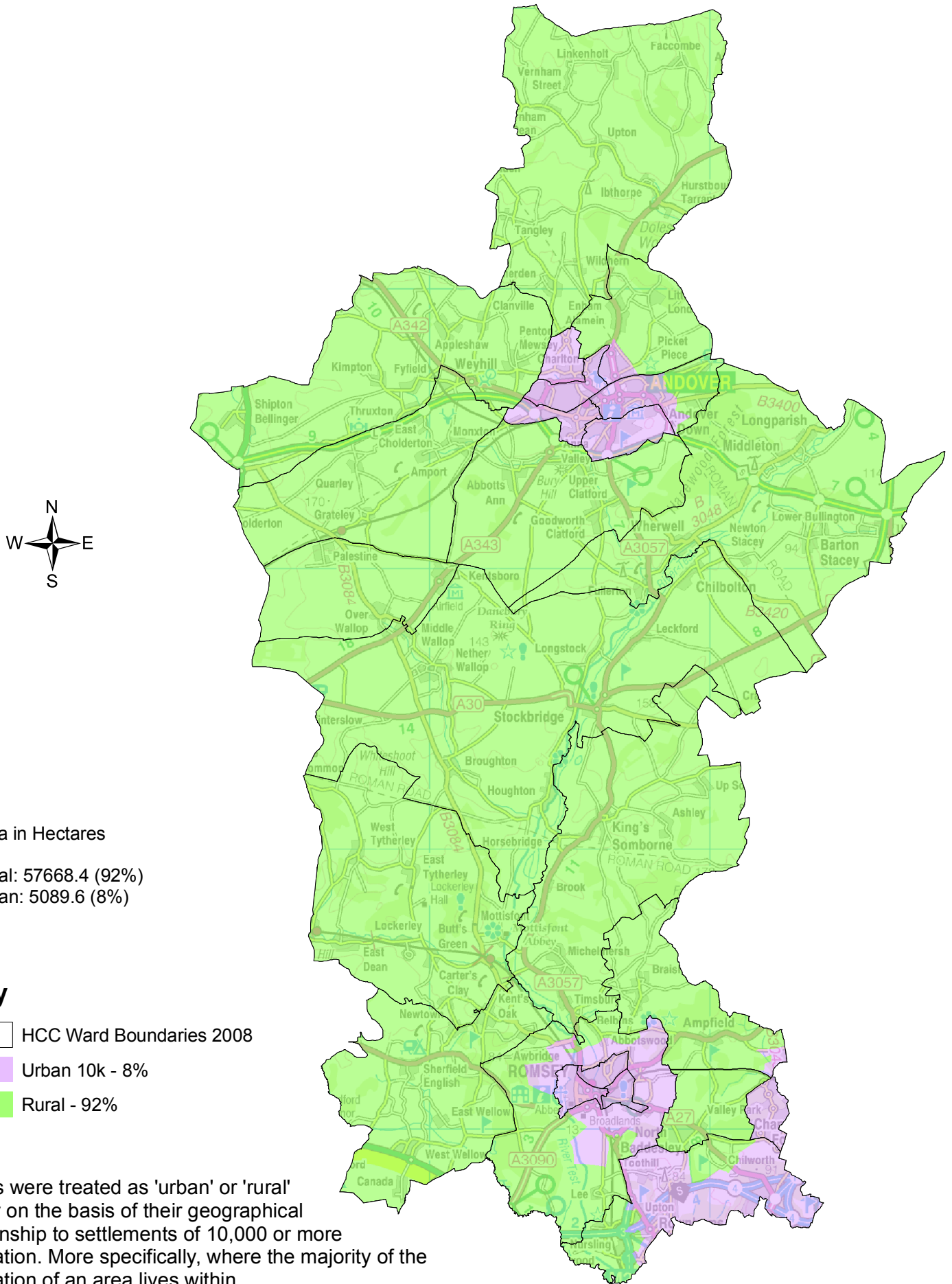


2004 Rural & Urban Classification for Output Areas - Test Valley (including ward boundaries)

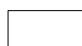




Area in Hectares

Rural: 57668.4 (92%)

Urban: 5089.6 (8%)

Key

-  HCC Ward Boundaries 2008
-  Urban 10k - 8%
-  Rural - 92%

*Areas were treated as 'urban' or 'rural' simply on the basis of their geographical relationship to settlements of 10,000 or more population. More specifically, where the majority of the population of an area lives within settlements with a population of more than 10,000 people, the area is treated as urban. All other areas were treated as rural.