

A landscape photograph showing a field with a horse in the middle ground. The foreground is filled with dense, yellow-green bushes. In the background, there is a line of trees, including some tall, thin trees and a large, leafy tree on the left. The overall scene is bright and natural.

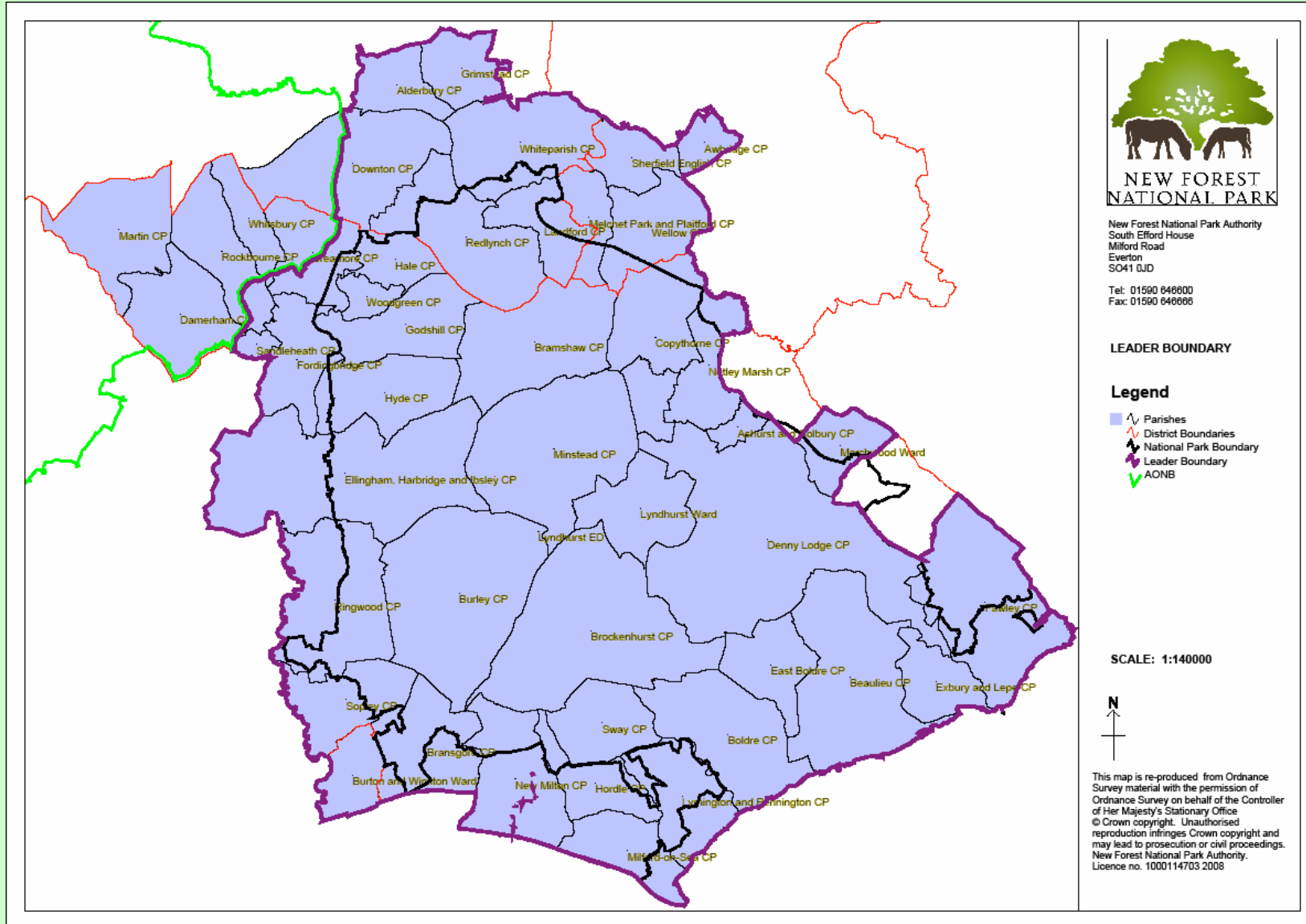
**LEADER Funding for
the New Forest 2008-2013**

LEADER Funding 2008-2013

An Overview

- LEADER is an EU initiative that was launched in 1991 as a way of providing rural communities in the EU with the tools to play an active role in shaping their own future, in other words, to enable local communities to find local solutions to local needs.
- The New Forest has been approved as one of the 2008-2013 LEADER areas and will have £2,175,591 to allocate over the 6 year programme
- The programme will support rural businesses and communities and particularly the farming and forestry sectors.
- All applications for funding from the LEADER programme will be appraised by the Local Action Group (LAG).
- The New Forest LAG consists of 22 members drawn from the agricultural and forestry sectors, the local business sector, community organisations and public sector organisations.

The LAG Area



New Forest LEADER Programme

Objective 1:

To support and encourage the production and promotion of New Forest wood products





Objective 2:
To support the development and marketing of
New Forest farm products and rural micro-
businesses



Objective 3:

To encourage and support sustainable land, farm and forestry management



Objective 4:

To provide support for rural communities to provide sustainable community facilities and essential community services



The type of projects that could be supported:

- Installation of wood fuel heating systems on farms and estates, and support for the production of wood-fuel
- Development of small-scale water management schemes on farm and forestry holdings
- Collaborative marketing for the promotion of New Forest wood products
- Collaborative machinery rings managed by local estates
- Hub for co-ordinating the supply chain for craft quality timber
- Co-operation projects to develop joint marketing of local wood fuel supplies
- Support for local businesses to develop and produce woodland products e.g. picnic tables
- Installation of small-scale renewable energy systems on farm holdings
- Local estates collaborating in the production and marketing of venison and other game

- Projects will be assessed on their own merits, but there is only a finite amount of funding per year, so projects will be supported on a “first come – first served” basis.
- The programme is likely to be open for the first round of applications in August / September 2008 but we will be happy to discuss potential applications before then.
- Contacts:
 - Sally Igra, Leader Programme Manager at New Forest District Council on 02380-285368 or e-mail sally.igra@nfdc.gov.uk or
 - Kathryn Boler, External Funding Officer at New Forest National Park Authority on 01590-646690 or e-mail kathryn.boler@newforestnpa.gov.uk



Sustainable Development Fund



A grant scheme to encourage sustainable ways of enjoying and living in the New Forest National Park.



Sustainable Development Fund



Supporting projects that have a positive effect on the **environmental, economic and community** wellbeing of the New Forest.



Sustainable Development Fund



Projects must further the National Park purposes:

- To conserve and enhance the natural beauty, wildlife and cultural heritage of the Park; and
- To promote opportunities for the understanding and enjoyment of the Park's special qualities by the public.



Sustainable Development Fund



Applications are assessed by a Panel made up of representatives from the local area.

Panel members have a wide range of interests including agriculture, tourism, wildlife and business.



Progress To Date



Since April 2006 the Fund has supported **29** projects, allocating almost **£350,000**.



Sustainable Energy



Eco-Dormitory at Minstead Study Centre

Sustainability and education features in this new building.



Sustainable Energy



The Mill at Gordleton Waterwheel Renewal

Re-instating a waterwheel to generate electricity.



Children and Young People



Countryside Education Project

Children learning about farming and where their food comes from.



Children and Young People



Breaking Down the Barriers

Conservation volunteering opportunities for young people and vulnerable adults.



Community



New Forest Aspirations

Learning about woodland management and timber production.



How to Apply

- Contact Claire Gingell for further information on [01590- 646664](tel:01590646664) or claire.gingell@newforestnpa.gov.uk
- Visit the website www.newforestnpa.gov.uk